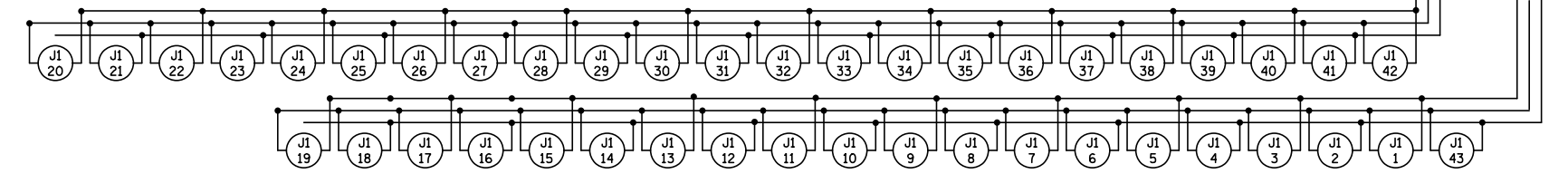


PLOTTED/REVISED: 3-DEC-2019

I/PLOT NAME: 16220-83.lit-load
 PATH & FILENAME: Projects\DM罗斯06\6220\083\Traffic\Lighting\6220-83.lit-load.dgn

W DENOTES NEUTRAL CONDUCTOR
 B AND R DENOTE CURRENT CARRYING CONDUCTORS
 62J1
 240/480 VOLT

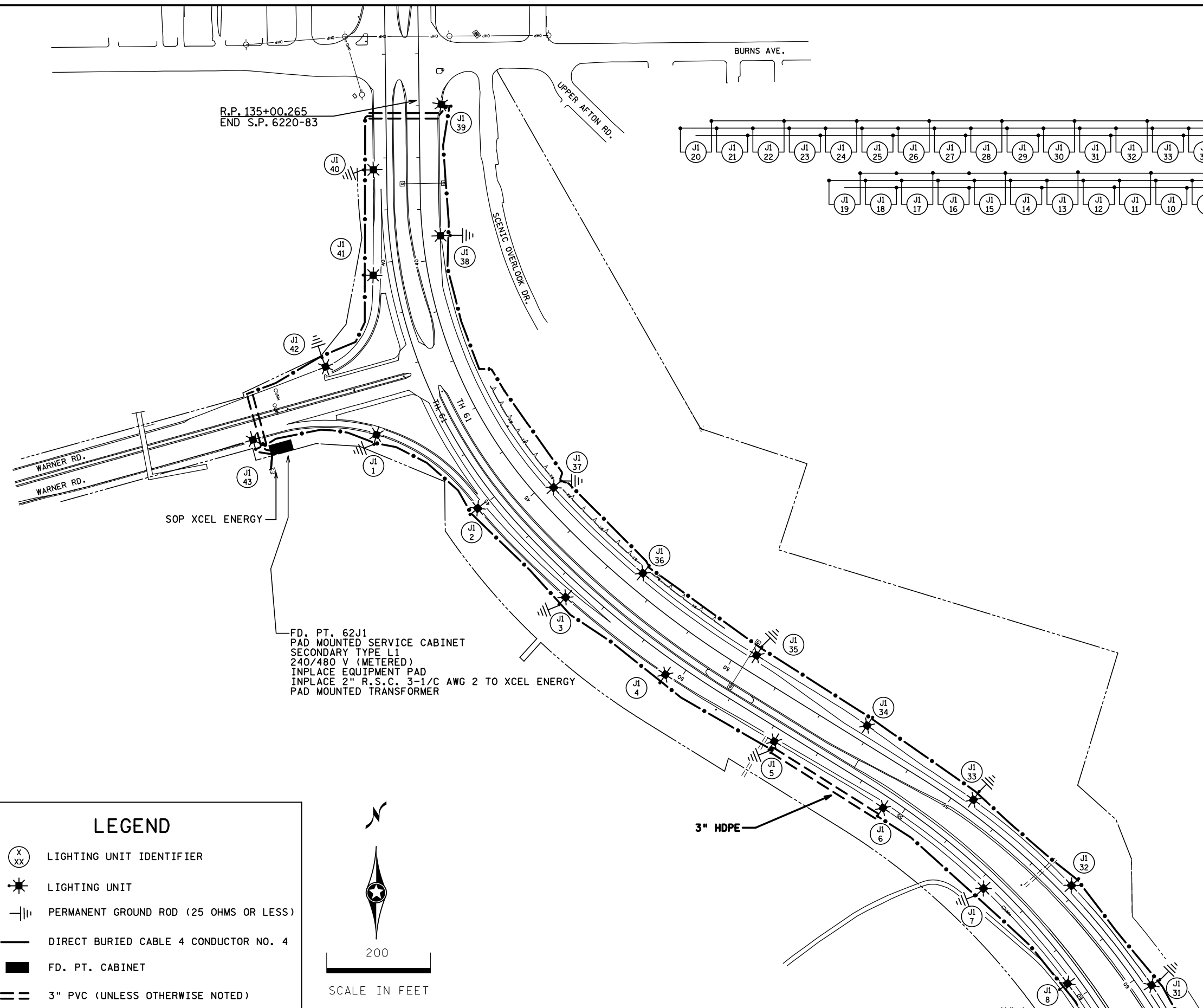
4 - 2 POLE
 BREAKERS



FEEDPOINT 62J1
 LIGHTING UNIT LOCATION AND TYPE

NO.	STATION	LT.	RT.	LOCATION	TYPE	FOUNDATION
(1) 1	39+40	X		WARNER RD	9-40	E
2	S.B. 45+00	X		T.H. 61		
3	S.B. 47+30	X				
4	S.B. 49+70	X				
5	S.B. 52+20	X				
6	S.B. 54+60	X				
7	S.B. 57+20	X				
8	S.B. 59+60	X				
31	N.B. 60+20	X				
32	N.B. 57+80	X				
33	N.B. 55+30	X				
34	N.B. 52+90	X				
35	N.B. 50+40	X			9-40	E
36	N.B.	X			6B-40	EXISTING
37	N.B.	X			6B-40	EXISTING
38	N.B. 39+50	X			9-40	E
39	N.B. 37+00	X				
40	S.B. 38+20		X			
41	S.B. 40+25	X		T.H. 61		
42	36+95	X		WARNER RD.		
(1) 43	41+60	X		WARNER RD.	9-40	E

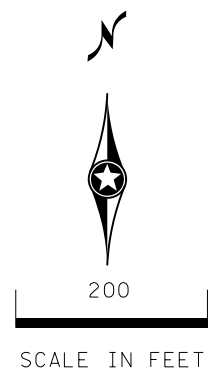
(1) INSTALL SALVAGED LUMINAIRES



FD. PT. 62J1
 PAD MOUNTED SERVICE CABINET
 SECONDARY TYPE L1
 240/480 V (METERED)
 INPLACE EQUIPMENT PAD
 INPLACE 2" R.S.C. 3-1/2 AWG 2 TO XCEL ENERGY
 PAD MOUNTED TRANSFORMER

LEGEND

- (X/XX) LIGHTING UNIT IDENTIFIER
- ★ LIGHTING UNIT
- ⏏ PERMANENT GROUND ROD (25 OHMS OR LESS)
- DIRECT BURIED CABLE 4 CONDUCTOR NO. 4
- FD. PT. CABINET
- === 3" PVC (UNLESS OTHERWISE NOTED)



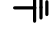




AS BUILT

BY	DATE	REVISIONS	FEEDPOINT: 62J1	LOCATION: TH 61 AT BURNS AVE.	LIGHTING PLAN
JS	12-3-19	3" HDPE ADDED BETWEEN (5-6)	METER ADDRESS: 1380 WARNER RD. N. ST. PAUL, 55115		
DRAWN BY: BAM CKD BY: PB			CERTIFIED BY: <i>Michael P. Lubinsky</i> LICENSED PROFESSIONAL ENGINEER	LIC. NO. 19863	DATE: 3-DEC-2019
			STATE PROJ. NO. 6220-83 (T.H. 61)		SHEET NO. 12 OF 25 SHEETS

PLOTTED/REVISED: 9-OCT-2018
 I/PLOT NAME: 62J2
 PATH & FILENAME: Projects\DM_R0S\06\6220\083\Traffic\Lighting\6220-83.ltr.loadgn

LEGEND

-  LIGHTING UNIT IDENTIFIER
-  LIGHTING UNIT
-  PERMANENT GROUND ROD (25 OHMS OR LESS)
-  DIRECT BURIED CABLE 4 CONDUCTOR NO. 4
-  INPLACE 2" RSC

FEEDPOINT 62J3 LIGHTING UNIT LOCATION AND TYPE

NO.	STATION	LT.	RT.	LOCATION	TYPE	FOUNDATION
(1) 22	N.B.96+90	X		T.H. 61	9-40	E
23	N.B.94+35	X				
24	N.B.91+90	X				
25	N.B.89+60	X				
26	S.B.89+10		X			
27	S.B.91+50		X			
(1) 28	S.B.93+90		X	T.H. 61	9-40	E

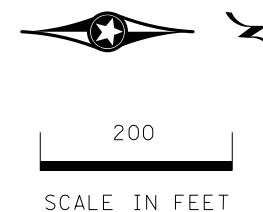
(1) INSTALL SALVAGED LUMINAIRES

FEEDPOINT 62J1 LIGHTING UNIT LOCATION AND TYPE

NO.	STATION	LT.	RT.	LOCATION	TYPE	FOUNDATION
(1) 9	S.B.62+20		X	T.H. 61	9-40	E
10	S.B.64+70		X			
11	S.B.67+00		X			
12	S.B.69+50		X			
13	S.B.72+00		X			
14	S.B.74+40		X			
15	S.B.76+90		X			
16	S.B.79+30		X			
17	S.B.81+70		X			
18	S.B.84+25		X			
19	S.B.86+65		X			
20	N.B.87+20	X				
21	N.B.84+70	X				
22	N.B.82+30	X				
23	N.B.79+90	X				
24	N.B.77+50	X				
25	N.B.75+10	X				
26	N.B.72+60	X				
27	N.B.70+20	X				
28	N.B.67+70	X				
29	N.B.65+30	X				
(1) 30	N.B.62+70		X	T.H. 61	9-40	E

(1) INSTALL SALVAGED LUMINAIRES

METER ADDRESS: 62J1 1380 WARNER RD. N. ST. PAUL, 55115
 62J3 1840 LOWER AFTON RD. ST. PAUL, 55115



BY	DATE	REVISIONS

FEEDPOINT: 62J1 & 62J3 LOCATION: TH 61

CERTIFIED BY Michael P. Dubinsky LIC. NO. 19863 DATE: 9-OCT-2018
LICENSED PROFESSIONAL ENGINEER

LIGHTING PLAN

STATE PROJ.NO. 6220-83 (T.H. 61) SHEET NO. 13 OF 25 SHEETS