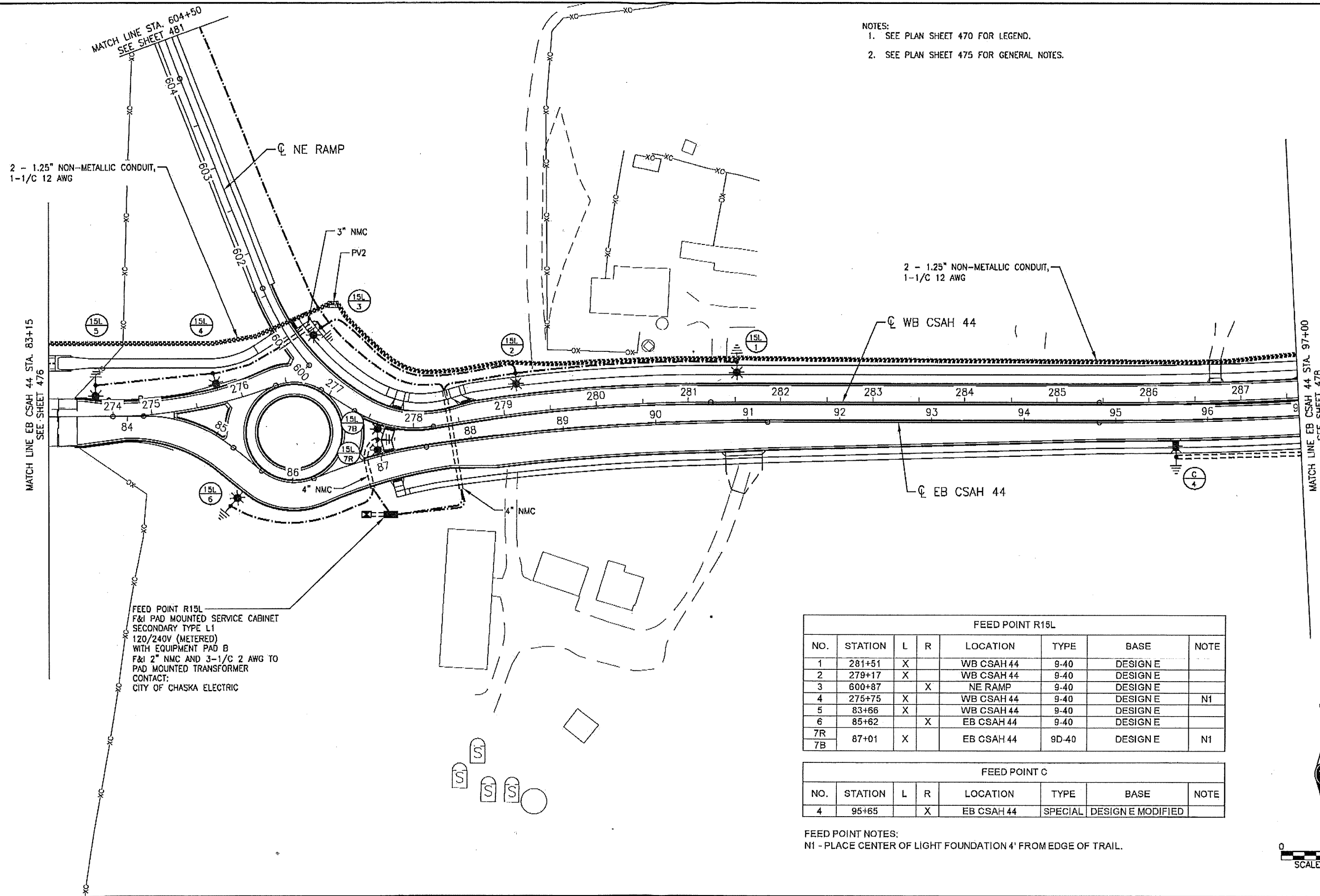


NOTES:  
 1. SEE PLAN SHEET 470 FOR LEGEND.  
 2. SEE PLAN SHEET 475 FOR GENERAL NOTES.



2 - 1.25\"/>

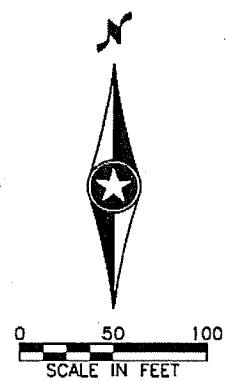
2 - 1.25\"/>

FEED POINT R15L  
 F&I PAD MOUNTED SERVICE CABINET  
 SECONDARY TYPE L1  
 120/240V (METERED)  
 WITH EQUIPMENT PAD B  
 F&I 2\"/>

FEED POINT R15L							
NO.	STATION	L	R	LOCATION	TYPE	BASE	NOTE
1	281+51	X		WB CSAH 44	9-40	DESIGN E	
2	279+17	X		WB CSAH 44	9-40	DESIGN E	
3	600+87		X	NE RAMP	9-40	DESIGN E	
4	275+75	X		WB CSAH 44	9-40	DESIGN E	N1
5	83+66	X		WB CSAH 44	9-40	DESIGN E	
6	85+62		X	EB CSAH 44	9-40	DESIGN E	
7R	87+01	X		EB CSAH 44	9D-40	DESIGN E	N1
7B							

FEED POINT C							
NO.	STATION	L	R	LOCATION	TYPE	BASE	NOTE
4	95+65		X	EB CSAH 44	SPECIAL	DESIGN E MODIFIED	

FEED POINT NOTES:  
 N1 - PLACE CENTER OF LIGHT FOUNDATION 4' FROM EDGE OF TRAIL.



TOM RICHARDSON | 3/28/2019 1:50:55 PM  
 A:\S:\CSA\CSAH 44\Drawings\10741\_LL01\_LIGHTING PLAN - LLO3.dwg  
 Project: 10741\_LL01\_LIGHTING PLAN - LLO3

NO.	DATE	BY	CHKD	APPR

I hereby certify that this plan, specification, or report was prepared by me or under my direct supervision and that I am a duly Licensed Professional Engineer under the laws of the State of Minnesota.  
 Print Name: **STEVE MCHENRY**  
 Date: *3/28/2019* License # **46710**

STATE AID PROJECT NO.  
 196-020-010  
 010-644-002  
 010-644-003  
 STATE PROJECT NO.  
 1017-108 (TH 212)

DRAWN BY  
**J. KRUSE**  
 DESIGNED BY  
**J. KRUSE**  
 CHECKED BY  
**T. RICHARDSON**  
 COMM. NO. 10741



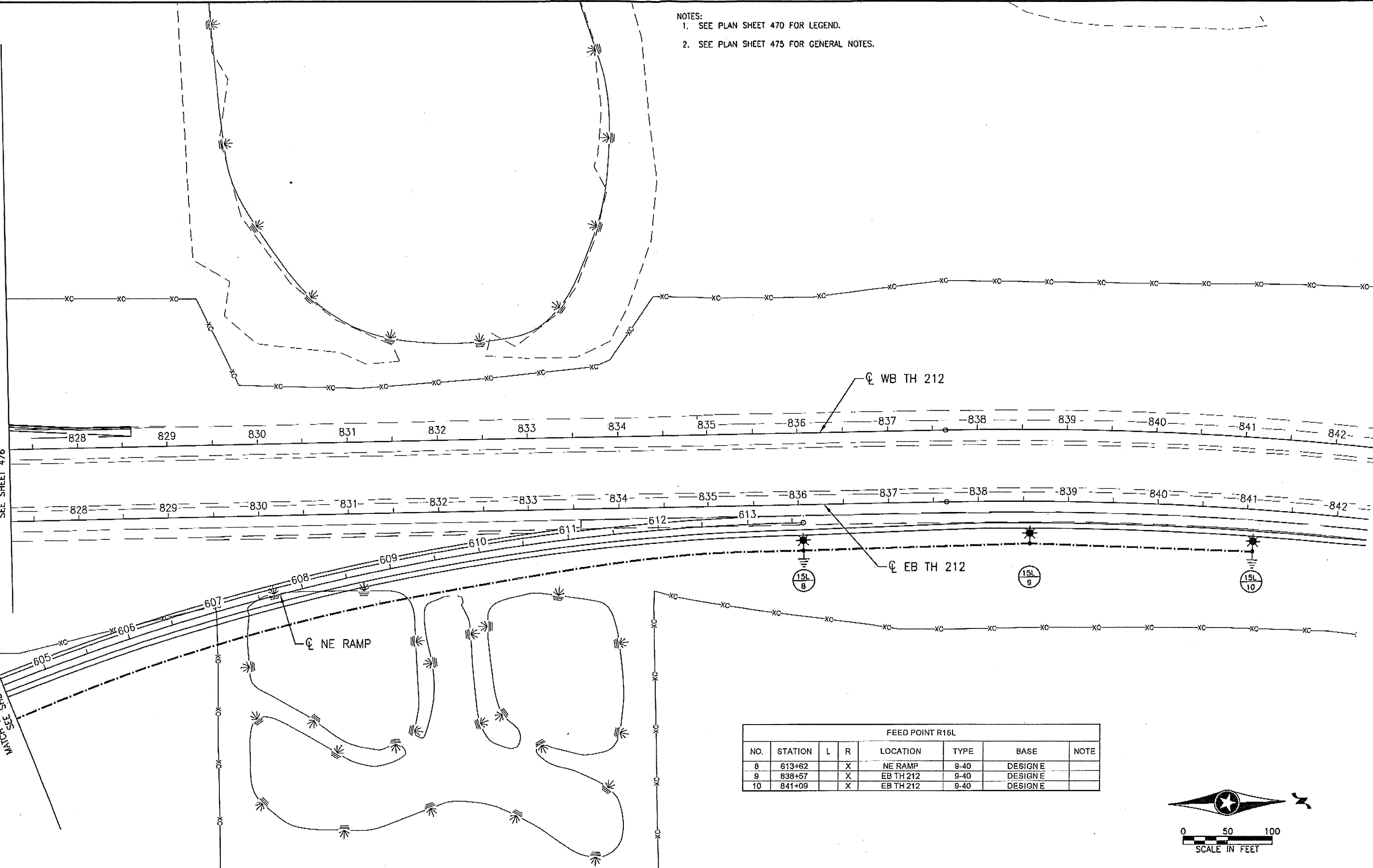
CARVER COUNTY  
 LIGHTING AND CONDUIT PLANS AND DETAILS  
 TH 212 INTERCHANGE & CSAH 44 IMPROVEMENTS  
 83+15 TO 97+00 CSAH 44

SHEET  
 477  
 OF  
 627

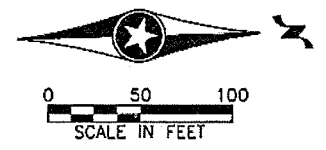
- NOTES:  
 1. SEE PLAN SHEET 470 FOR LEGEND.  
 2. SEE PLAN SHEET 475 FOR GENERAL NOTES.

MATCH LINE NB TH 212 STA. 827+25  
 SEE SHEET 476

MATCH LINE AS 694+30  
 SEE SHEET 477



FEED POINT R16L							
NO.	STATION	L	R	LOCATION	TYPE	BASE	NOTE
8	613+62		X	NE RAMP	9-40	DESIGNE	
9	838+57		X	EB TH 212	9-40	DESIGNE	
10	841+09		X	EB TH 212	9-40	DESIGNE	



JACOB MITZEL 1/29/2019 3:51:54 PM  
 21.05 (LMS TECH) \\sny-cfhe\c\p\j\mitzel\Folders\Projects\10741\Lighting Plan.dwg: 10741\_LLD1\_LIGHTING PLAN - LL07  
 H:\PROJECTS\10000\10741\CAD\_BIN\PLAN\10741\_LLD1\_LIGHTING PLAN.DWG: 10741\_LLD1\_LIGHTING PLAN - LL07

I hereby certify that this plan, specification, or report was prepared by me or under my direct supervision and that I am a duly Licensed Professional Engineer under the laws of the State of Minnesota.  
 Print Name: **STEVE MCHENRY**  
 Date: 1/25/2019 License # 46710

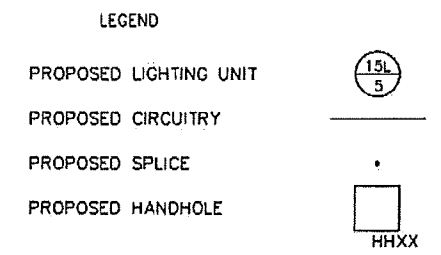
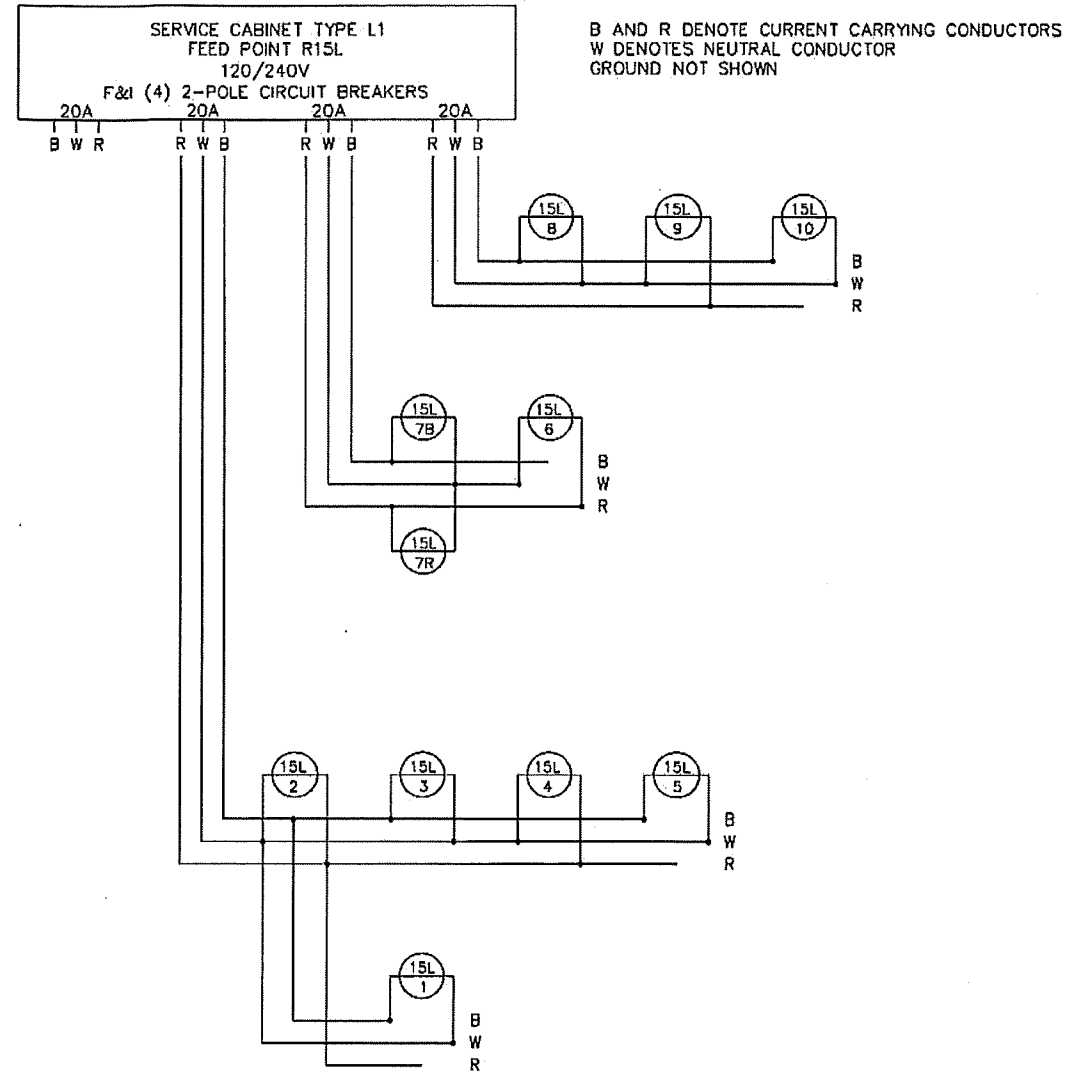
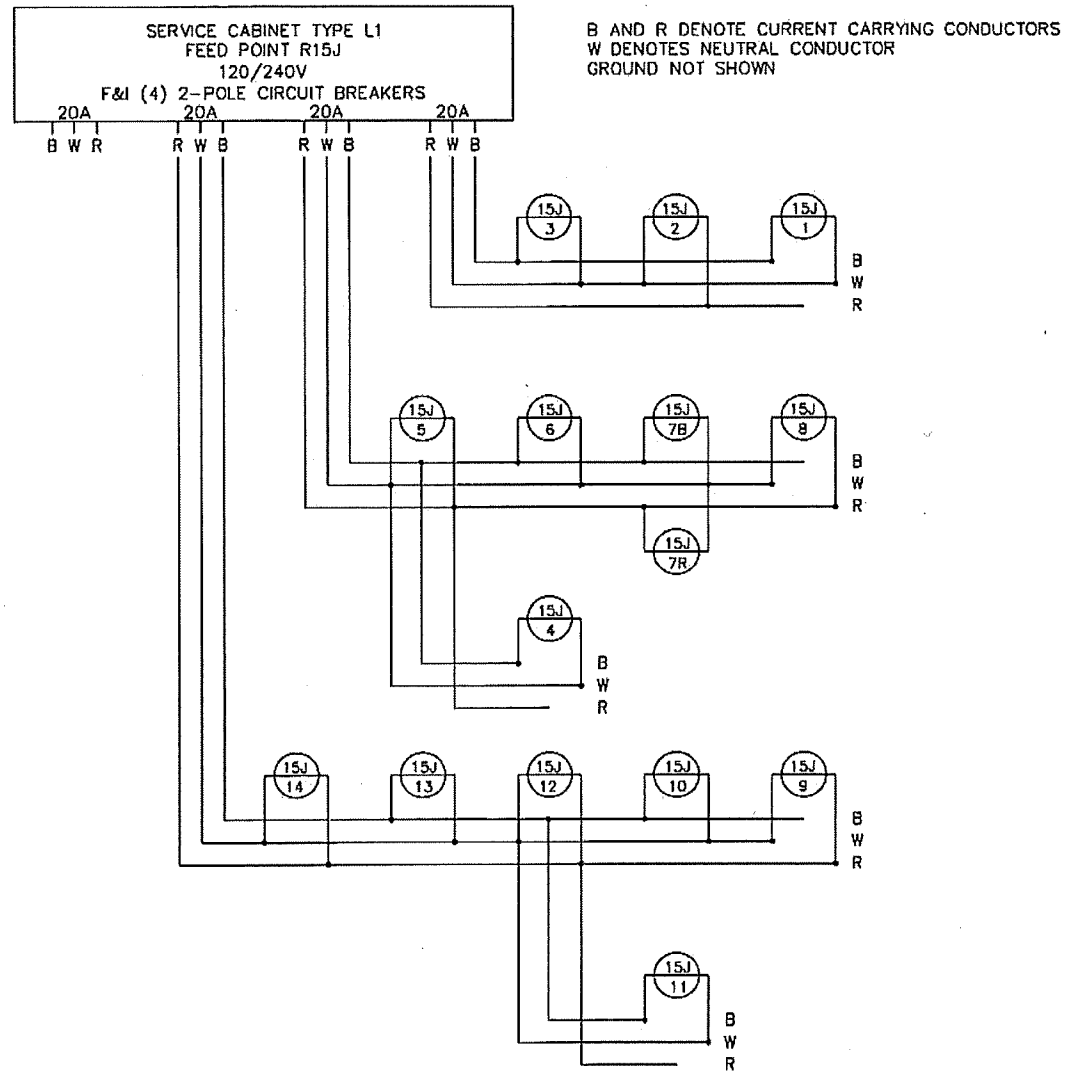
STATE AID PROJECT NO.  
 196-020-010  
 010-644-002  
 010-644-003  
 STATE PROJECT NO.  
 1017-108 (TH 212)

DRAWN BY  
**J. KRUSE**  
 DESIGNED BY  
**J. KRUSE**  
 CHECKED BY  
**T. RICHARDSON**  
 COMM. NO. 10741



CARVER COUNTY  
 LIGHTING AND CONDUIT PLANS AND DETAILS  
 TH 212 INTERCHANGE & CSAH 44 IMPROVEMENTS  
 827+25 TO 842+35 TH 212

SHEET  
 481  
 OF  
 627



JACOB WITTEL | 1/25/2019 14:53:33 PM  
 21.05 (LMS TECH) | \\p1-csfile\chop\jmitz\jmitz\10741\_LL01\_LIGHTING PLAN - LLOB  
 H:\PROJECTS\10000\10741\CAD\_BIM\PLAN\10741\_LL01\_LIGHTING PLAN.DWG: 10741\_LL01\_LIGHTING PLAN - LLOB

NO	DATE	BY	CHKD	APPR

I hereby certify that this plan, specification, or report was prepared by me or under my direct supervision and that I am a duly Licensed Professional Engineer under the laws of the State of Minnesota.

Print Name: **STEVE MCHENRY**

Date: 1/25/2019 License # 46710

STATE AID PROJECT NO.  
196-020-010  
010-644-002  
010-644-003

STATE PROJECT NO.  
1017-108 (TH 212)

DRAWN BY  
J. KRUSE

DESIGNED BY  
J. KRUSE

CHECKED BY  
T. RICHARDSON

COMM. NO. 10741



CARVER COUNTY

LIGHTING AND CONDUIT PLANS AND DETAILS

TH 212 INTERCHANGE & CSAH 44 IMPROVEMENTS

SHEET  
482  
OF  
627