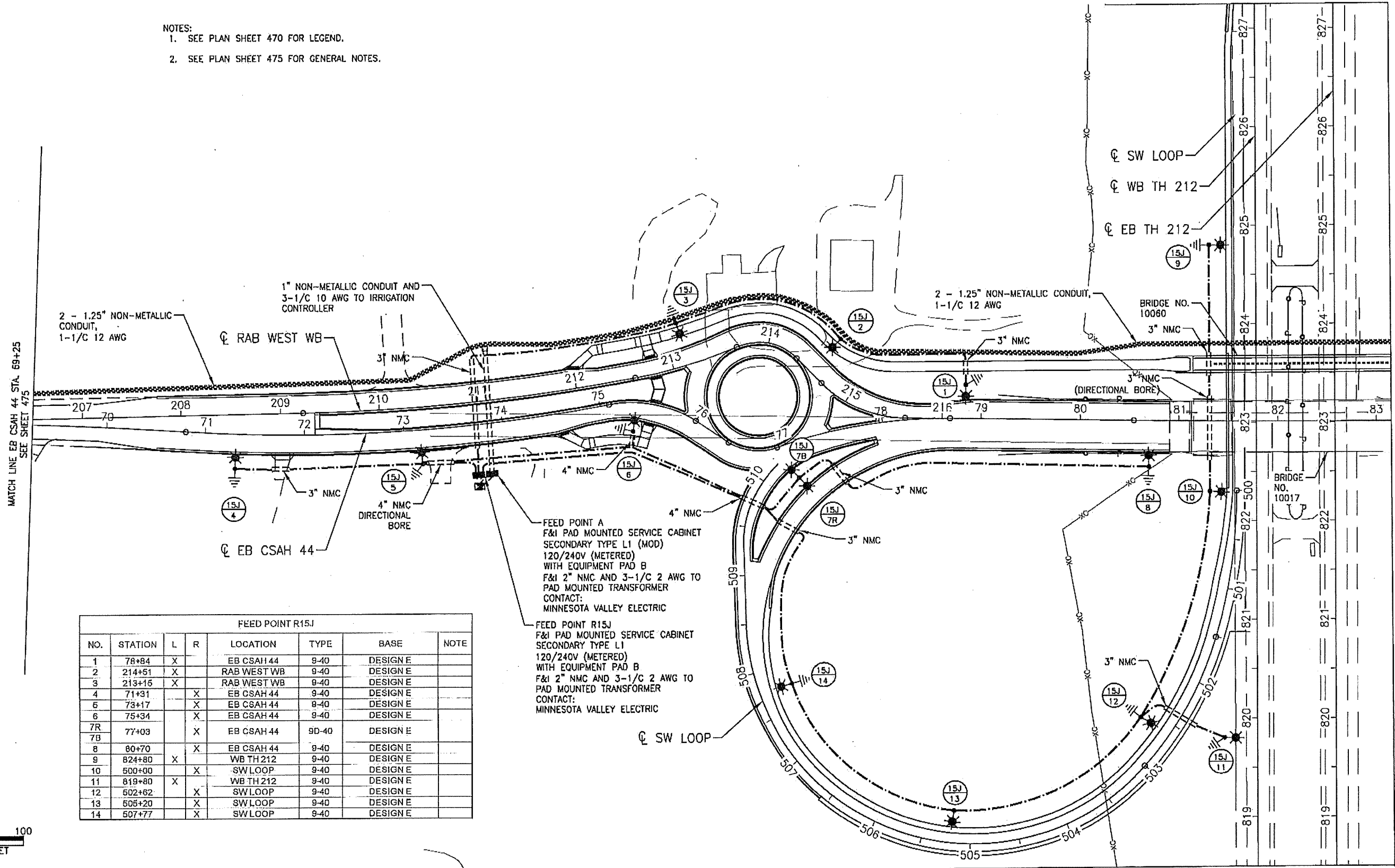


MATCH LINE NB TH 212 STA. 827+25
SEE SHEET 481

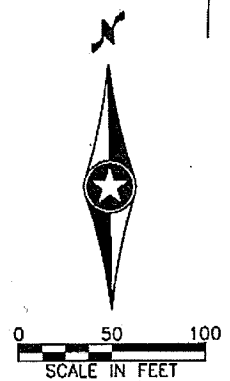
- NOTES:
1. SEE PLAN SHEET 470 FOR LEGEND.
2. SEE PLAN SHEET 475 FOR GENERAL NOTES.



FEED POINT R15J							
NO.	STATION	L	R	LOCATION	TYPE	BASE	NOTE
1	78+84	X		EB CSAH 44	9-40	DESIGN E	
2	214+51	X		RAB WEST WB	9-40	DESIGN E	
3	213+15	X		RAB WEST WB	9-40	DESIGN E	
4	71+31		X	EB CSAH 44	9-40	DESIGN E	
5	73+17		X	EB CSAH 44	9-40	DESIGN E	
6	75+34		X	EB CSAH 44	9-40	DESIGN E	
7R	77+03		X	EB CSAH 44	9D-40	DESIGN E	
7B							
8	80+70		X	EB CSAH 44	9-40	DESIGN E	
9	824+80	X		WB TH 212	9-40	DESIGN E	
10	500+00		X	SW LOOP	9-40	DESIGN E	
11	819+80	X		WB TH 212	9-40	DESIGN E	
12	502+62		X	SW LOOP	9-40	DESIGN E	
13	505+20		X	SW LOOP	9-40	DESIGN E	
14	507+77		X	SW LOOP	9-40	DESIGN E	

FEED POINT A
F&I PAD MOUNTED SERVICE CABINET
SECONDARY TYPE L1 (MOD)
120/240V (METERED)
WITH EQUIPMENT PAD B
F&I 2" NMC AND 3-1/C 2 AWG TO
PAD MOUNTED TRANSFORMER
CONTACT:
MINNESOTA VALLEY ELECTRIC

FEED POINT R15J
F&I PAD MOUNTED SERVICE CABINET
SECONDARY TYPE L1
120/240V (METERED)
WITH EQUIPMENT PAD B
F&I 2" NMC AND 3-1/C 2 AWG TO
PAD MOUNTED TRANSFORMER
CONTACT:
MINNESOTA VALLEY ELECTRIC



TOL. RICHARDSON, 1/29/2019 1:50:55 PM
 H:\PROJECTS\10000\10741\CAD_BIM\PLAN\10741_LLO1_LIGHTING PLAN - LLO2
 H:\PROJECTS\10000\10741\CAD_BIM\PLAN\10741_LLO1_LIGHTING PLAN - LLO2

I hereby certify that this plan, specification, or report was prepared by me or under my direct supervision and that I am a duly Licensed Professional Engineer under the laws of the State of Minnesota.
 Print Name: **STEVE MCHENRY**
 Date: 3/28/2019 License # 46710

STATE AID PROJECT NO.
196-020-010
010-644-002
010-644-003

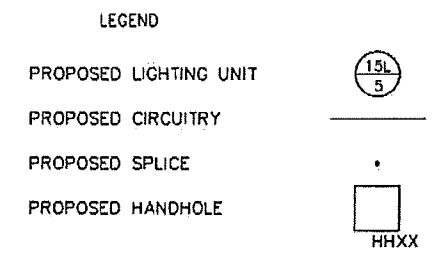
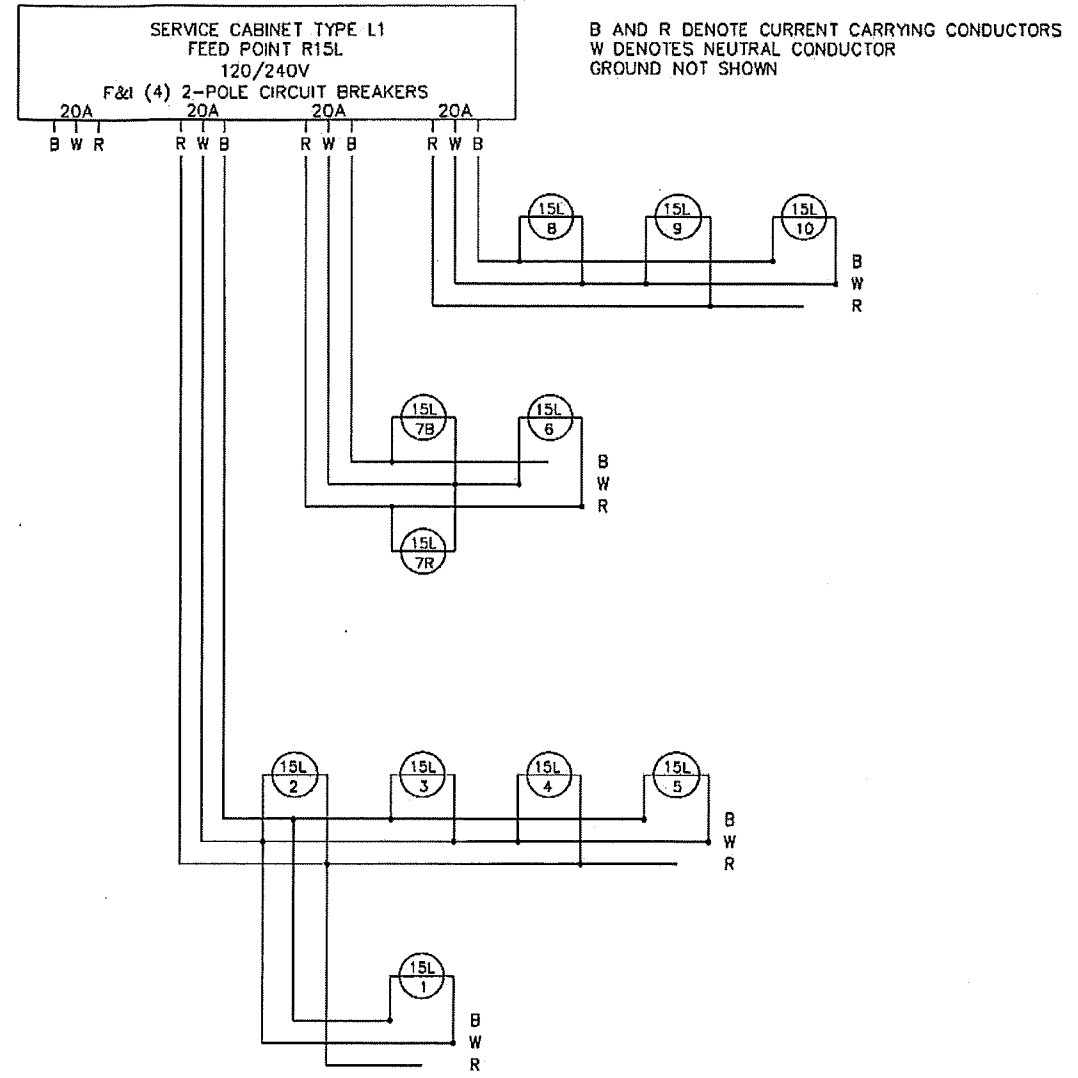
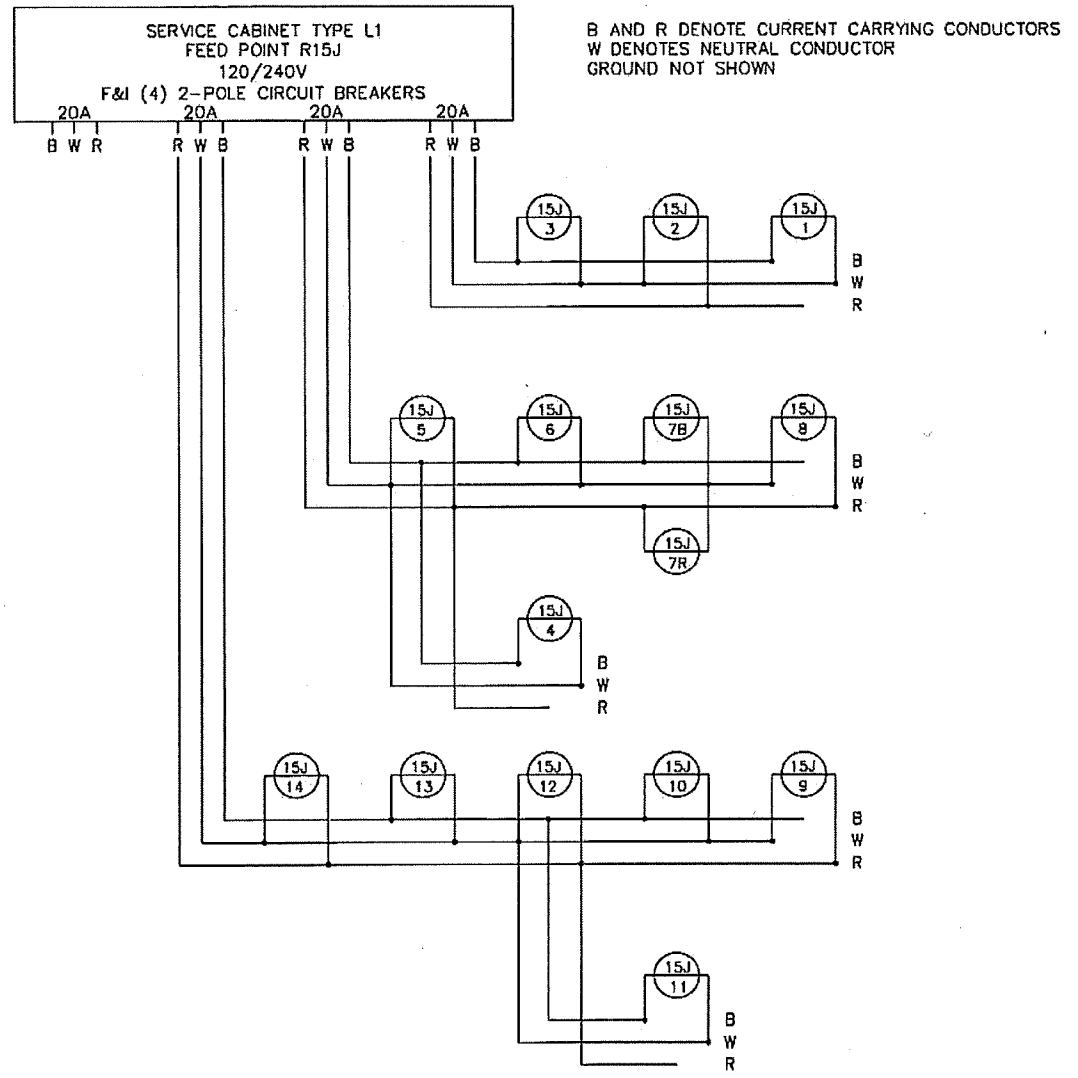
STATE PROJECT NO.
1017-108 (TH 212)

DRAWN BY
J. KRUSE
DESIGNED BY
J. KRUSE
CHECKED BY
T. RICHARDSON
COMM. NO. 10741



CARVER COUNTY
 LIGHTING AND CONDUIT PLANS AND DETAILS
 TH 212 INTERCHANGE & CSAH 44 IMPROVEMENTS
 69+25 TO 83+15 CSAH 44

SHEET
476
OF
627



JACOB WITTEL | 1/20/2019 14:53:33 PM
 21.05 (LMS TECH) | I:\projects\10000\10741\CAD_BIM\PLAN\10741_LL01_LIGHTING PLAN.DWG: 10741_LL01_LIGHTING PLAN - LLOB
 H:\PROJECTS\10000\10741\CAD_BIM\PLAN\10741_LL01_LIGHTING PLAN.DWG: 10741_LL01_LIGHTING PLAN - LLOB

NO	DATE	BY	CHKD	APPR

I hereby certify that this plan, specification, or report was prepared by me or under my direct supervision and that I am a duly Licensed Professional Engineer under the laws of the State of Minnesota.

Print Name: **STEVE MCHENRY**

Date 1/25/2019 License # 46710

STATE AID PROJECT NO.
196-020-010
010-644-002
010-644-003

STATE PROJECT NO.
1017-108 (TH 212)

DRAWN BY
J. KRUSE

DESIGNED BY
J. KRUSE

CHECKED BY
T. RICHARDSON

COMM. NO. 10741



CARVER COUNTY
LIGHTING AND CONDUIT PLANS AND DETAILS
TH 212 INTERCHANGE & CSAH 44 IMPROVEMENTS

SHEET
482
OF
627