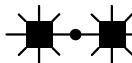

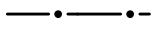
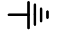
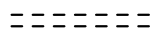


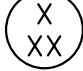
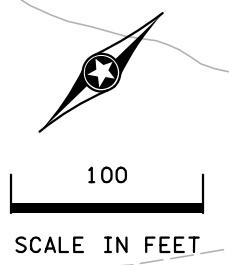


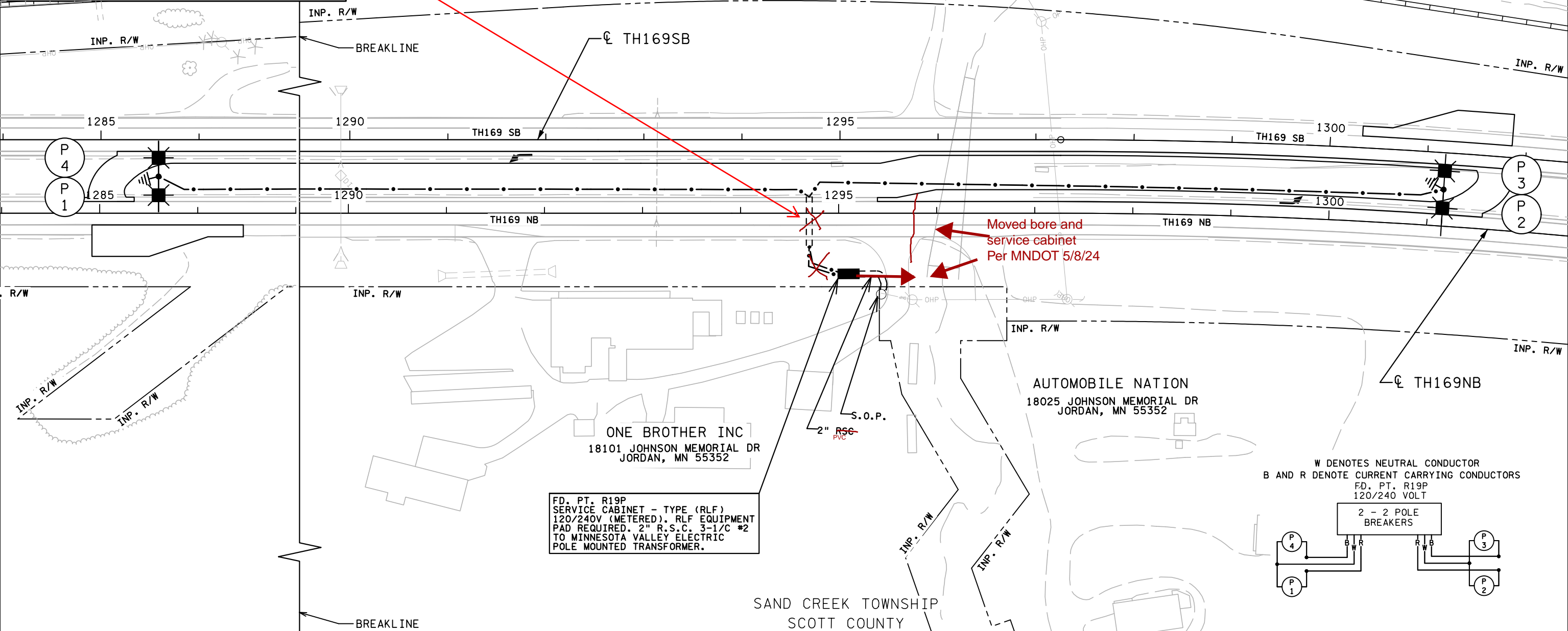
LEGEND

-  LIGHTING UNIT
-  SERVICE CABINET
-  DIRECT BURIED LIGHTING CABLE 4/C 4 AWG
-  PERMANENT GROUND ROD (25 OHMS OR LESS)
-  3" NMC DIRECTIONAL BORED (UNLESS NOTED OTHERWISE)
-  INPLACE POWER POLE
-  OVERHEAD POWER LINES
-  LIGHTING UNIT IDENTIFIER

FEEDPOINT R19P					
LIGHTING UNIT LOCATION, TYPE AND FOUNDATION					
NO.	STATION	LT.	RT.	LOCATION	FOUNDATION
1	1285+60	X		℄ TH169NB	9D-40 DESIGN E
2	1301+15	X		℄ TH169NB	9D-40 DESIGN E
3					



SAND CREEK TOWNSHIP
SCOTT COUNTY



PLOTTED/REVISED: 19-APR-2023

I/PLOT NAME: 7009-85_11f_10
PATH & FILENAME: Projects\DM_R05\697009\085\Traffic\Lighting\7009-85_11f_10.dgn

BY	DATE	REVISIONS

DRAWN BY: DDD CKD BY: PB

FEEDPOINT: R19P LOCATION: 4900' SOUTH OF 173RD ST.
METER ADDRESS: 18035 JOHNSON MEMORIAL DR., JORDAN 55352

CERTIFIED BY *Gregory Kern* LIC. NO. 26829 DATE: 19-APR-2023
LICENSED PROFESSIONAL ENGINEER

FD. PT. R19P 2 OF 3

LIGHTING PLAN

STATE PROJ.NO.7009-85 (T.H.169) SHEET NO. SL4 OF SL5 SHEETS