



# Ely Highway 1 Intersections Study Central Ave & 3<sup>rd</sup> Ave E

Christian Lawien | MnDOT District 1 Assistant Traffic Engineer

Tanja Mattonen | St. Louis County Assistant Traffic Engineer

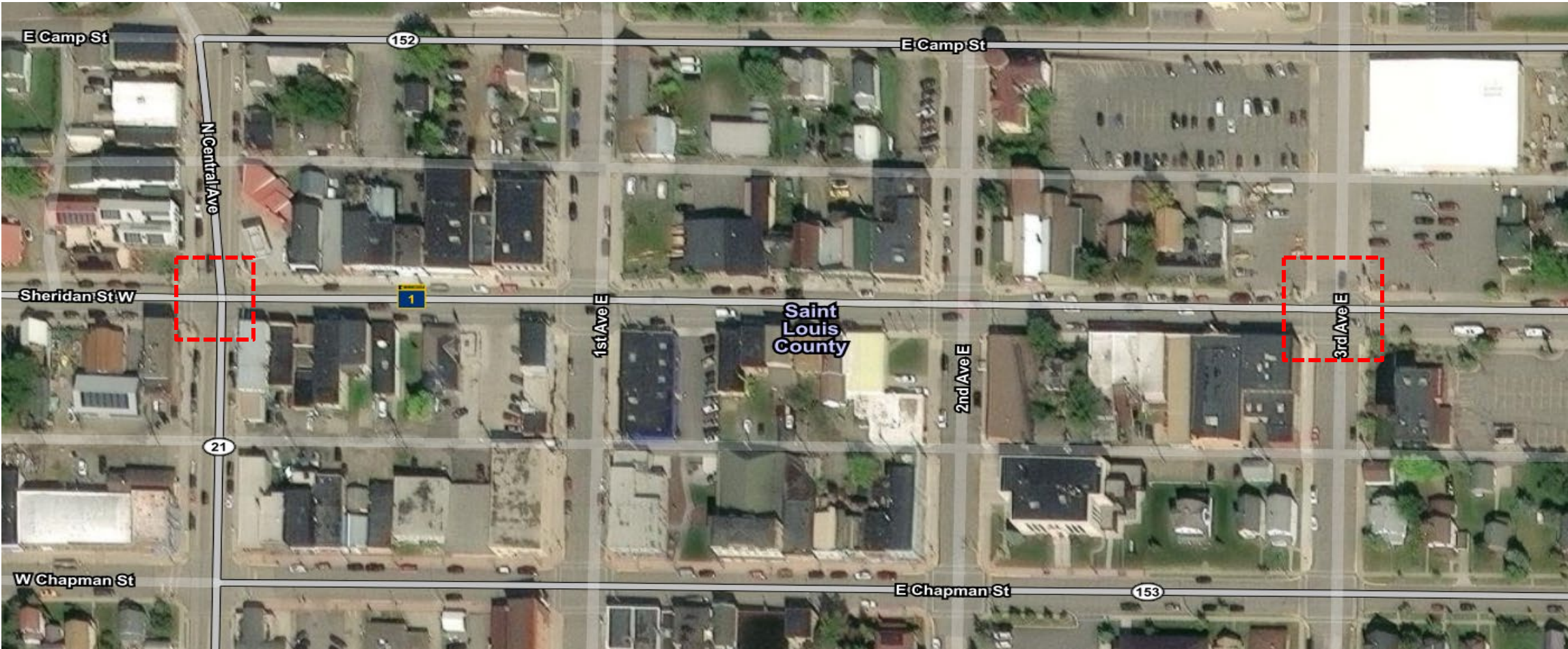
Alex Peritz | MnDOT District 1 North Area Project Manager

Pippi Mayfield | MnDOT District 1 Public Engagement & Communications Director

# Agenda

- Introductions
- Project Location
- Project Overview and Purpose
- Study Goals
- Engagement
- Next Steps
- Q&A

# Project Locations



# Project Overview and Purpose

- Asset Age & Condition
  - Signals were installed in 1981 (43 years old)
  - Design life of signal systems is 30 years
  - Pre-timed signals with no actuation
  - Increased maintenance costs as system ages
- Identify the most appropriate form of intersection traffic control to meet today's and tomorrow's needs
  - Perform Intersection Control Evaluations for each intersection
  - Gather public input (users of the intersections)

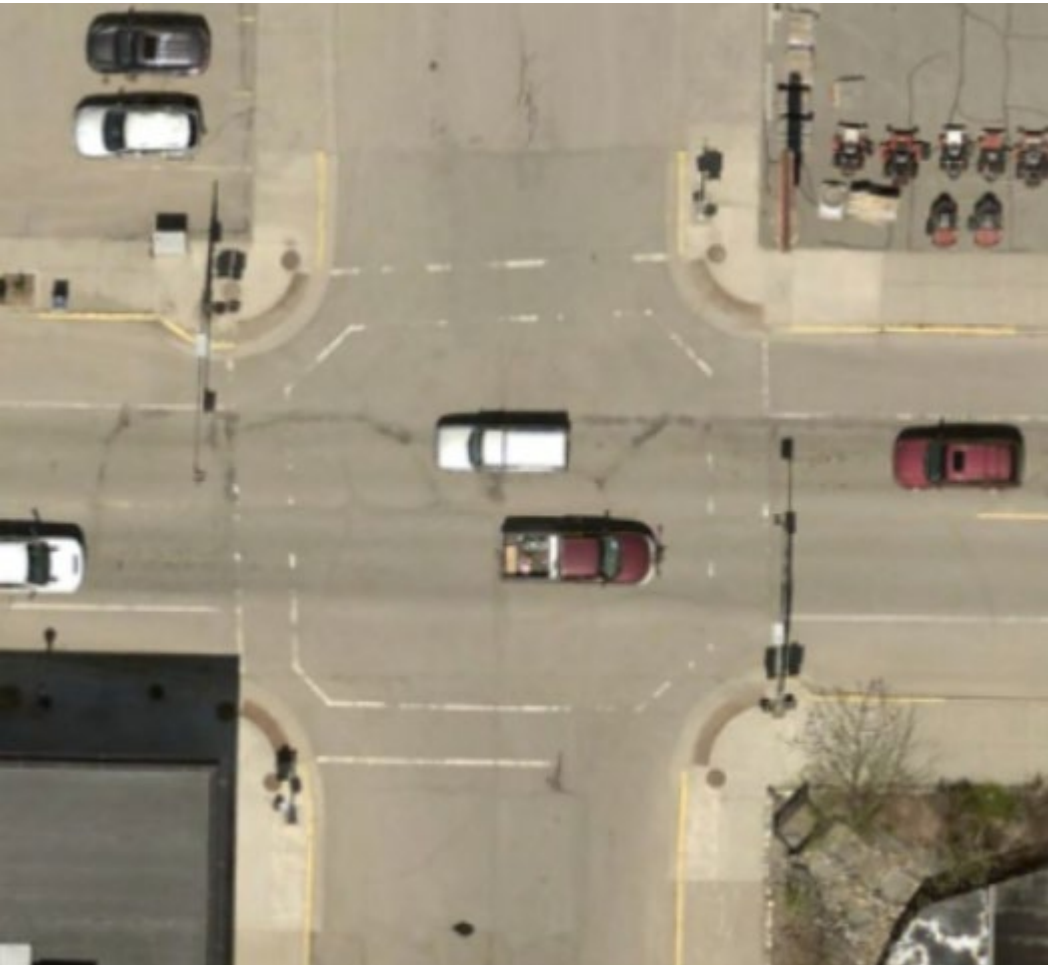
# Study Goals

- Gather user (public) comments
- Evaluate existing and future conditions
- Recommend and incorporate intersection controls that increase safety for all users and provide sufficient level of service
- Determine costs and obtain project funding
  - Project is not currently funded or programmed

# State Hwy 1 & Central Ave (County Hwys 21/152)



# State Hwy 1/169 & 3<sup>rd</sup> Ave E



- Survey
  - Found on Project Website: [https://www.dot.state.mn.us/d1/projects/ely\\_ice/index.html](https://www.dot.state.mn.us/d1/projects/ely_ice/index.html)
  - Closes June 30<sup>th</sup>
- Postcards
- Press Release
- Business and General Public Engagement Meetings



- MnDOT will continue gathering and compiling public comments for consideration
- MnDOT's consultant (Alliant) will complete Intersection Control Evaluation (ICE) Report
- MnDOT will schedule 2<sup>nd</sup> public meeting later this summer or early fall to review proposed traffic control for each intersection

# Questions?

**Christian Lawien**

*christian.lawien@state.mn.us*

218-725-2816