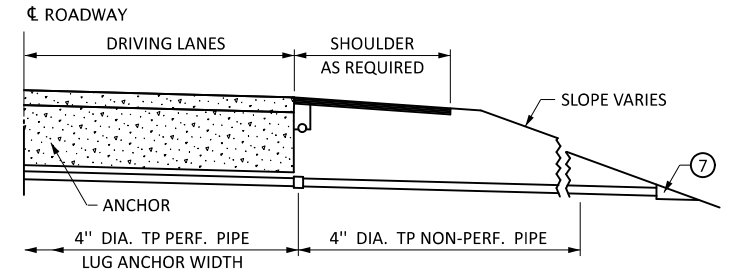
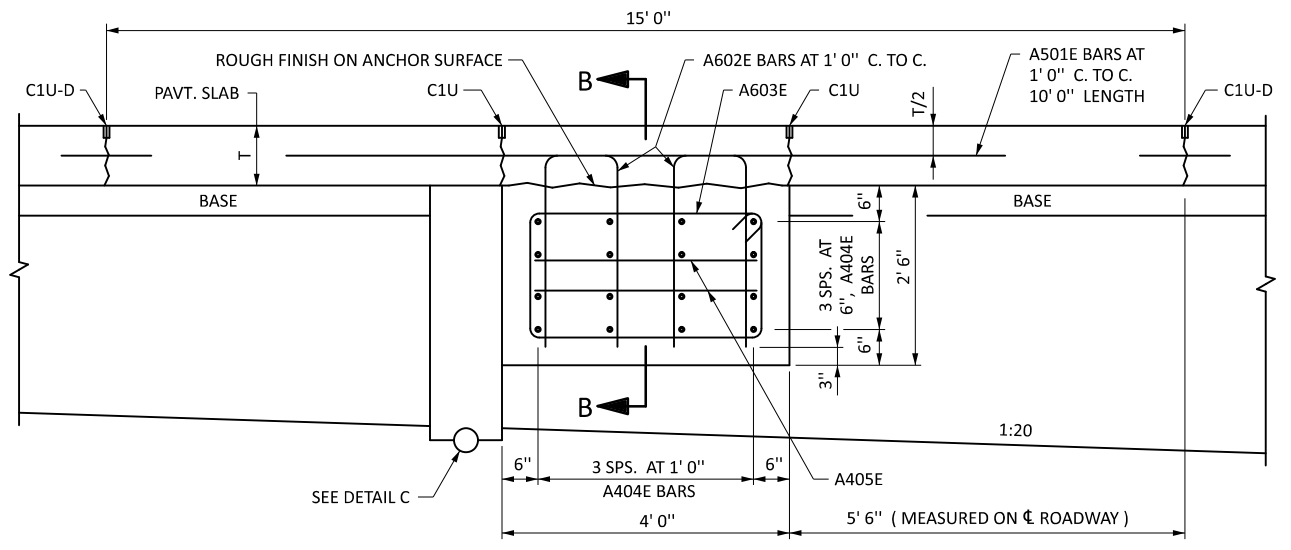


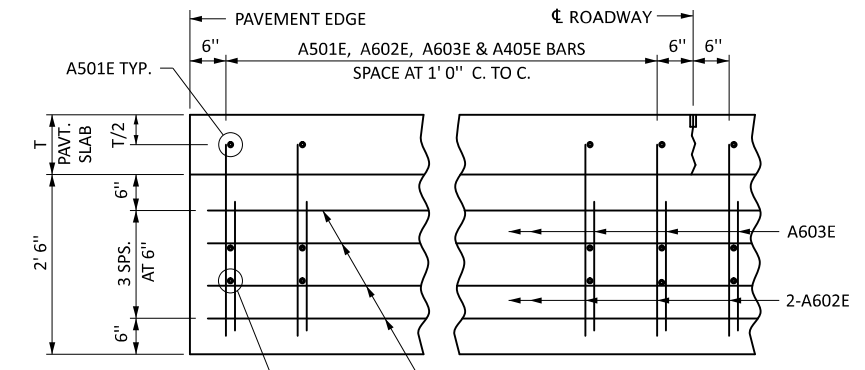
LONGITUDINAL ROADWAY PROFILE



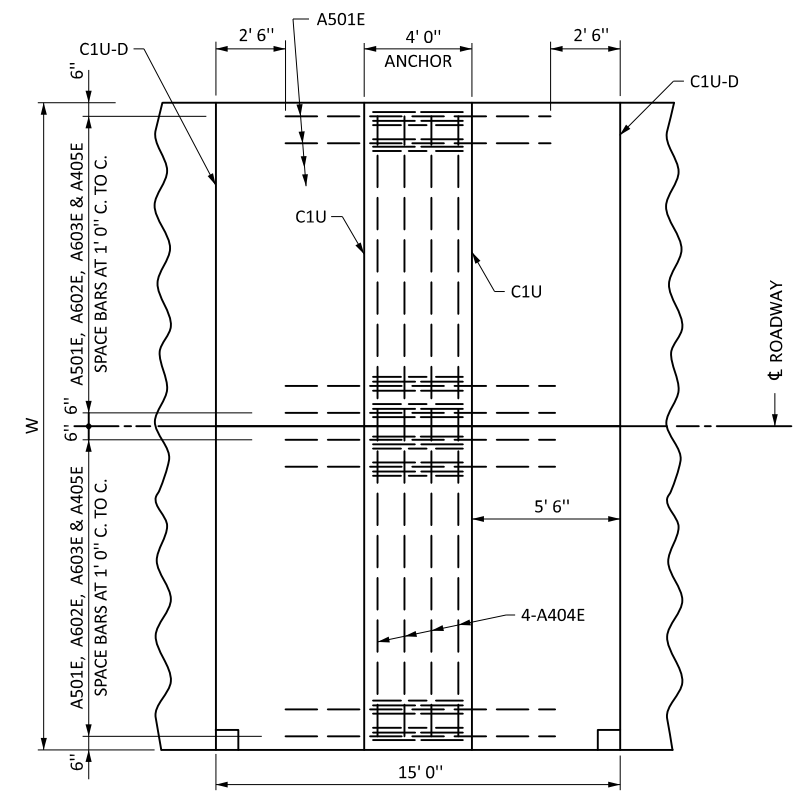
SECTION A-A



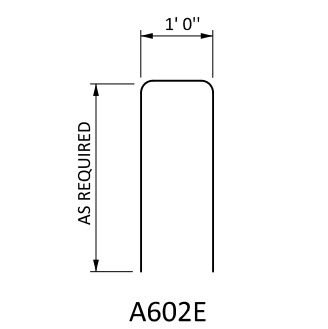
ANCHOR DETAIL



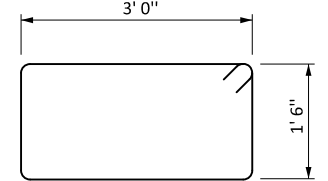
SECTION B-B



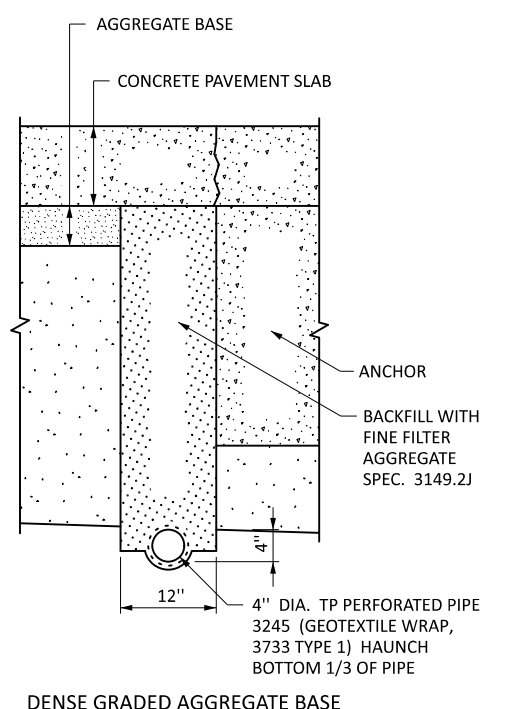
PLAN VIEW



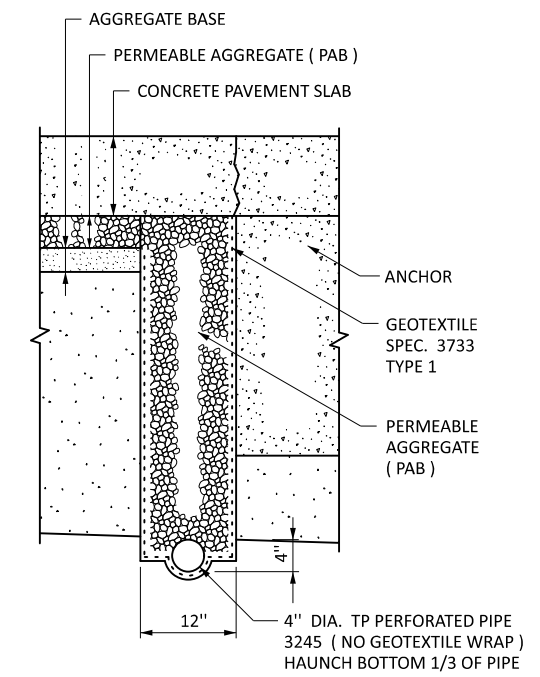
A602E



A603E



DENSE GRADED AGGREGATE BASE



PERMEABLE AGGREGATE BASE

DETAIL C

NOTES:

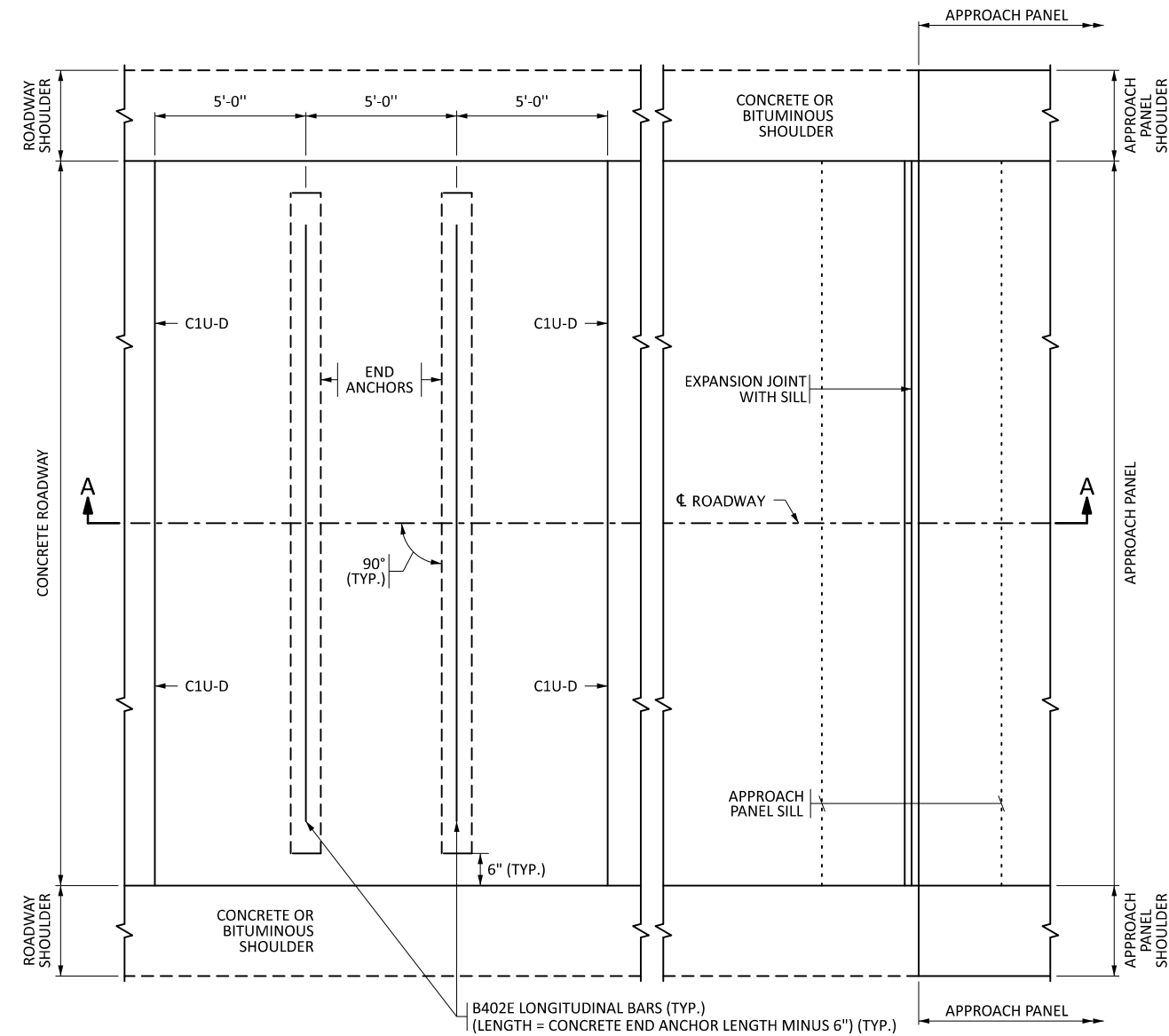
- FURNISH AND INSTALL DEFORMED EPOXY COATED REBARS IN ACCORDANCE WITH SPEC. 3301.
- PROVIDE 3" MINIMUM CONCRETE COVER EXCEPT AS NOTED.
- PROVIDE 2'-6" MINIMUM LAP LENGTH FOR A404E BARS.
- STAGGER ALL LAP SPLICES SUCH THAT NO MORE THAN 50% OF REBAR IS SPLICED AT THE SAME LOCATION.
- THE PAVEMENT END ANCHOR IS INCIDENTAL FOR WHICH NO DIRECT PAYMENT WILL BE MADE.
- ① THE PAVEMENT END ANCHOR IS TO BE USED ONLY WHERE A RIGID PAVEMENT IS CONSTRUCTED ON A STEEP GRADIENT (4% OR GREATER) AND ABUTS A BRIDGE APPROACH PANEL.
- ② FOR STRUCTURAL BACKFILL REQUIREMENTS REFER TO STANDARD PLAN 5-297.233.
- ③ DO NOT USE FORMS FOR THE CONSTRUCTION OF THE DOWNGRADE SIDE OF THE ANCHOR.
- ④ USE FORMS FOR CONSTRUCTION OF THE UPGRADE SIDE OF THE ANCHOR.
- ⑤ CONSTRUCT LUG ANCHORS 2 DAYS PRIOR TO PAVEMENT CONSTRUCTION WITH MIX NO. 3G52 OR APPROVED PAVING MIX.
- ⑥ PLACE DRAIN AFTER CONSTRUCTION OF ANCHOR. DRAIN EXCAVATION, BACKFILL, DRAIN PIPE, HEADWALL AND ANY OTHER WORK REQUIRED TO PLACE THE DRAIN WILL BE CONSIDERED INCIDENTAL.
- ⑦ USE A PRECAST CONCRETE HEADWALL AT OUTLET OR RUN PIPE TO STORM SEWER. SEE STANDARD PLATES MANUAL FOR CONCRETE HEADWALL DETAILS. PLACE HEADWALL IN ACCORDANCE WITH THE APPLICABLE PROVISIONS OF SPEC. 2502 AND SPECIAL PROVISIONS.

|                    |   |   |                                  |   |               |                 |
|--------------------|---|---|----------------------------------|---|---------------|-----------------|
| LEAD EXPERT OFFICE | CURT TURGEON<br>DIRECTOR<br>OFFICE OF MATERIALS & ROAD RESEARCH | PAVEMENT END ANCHORS UNDER CONCRETE PAVEMENT<br>(APPLIES TO GRADES 4% OR GREATER) | APPROVED: 04-16-2024<br>REVISED: | <br>THOMAS STYRBICKI<br>STATE DESIGN ENGINEER | STANDARD PLAN | 1 OF 2          |
|                    |   |   |                                  |   | 5-297.235     | STATE PROJ. NO. |

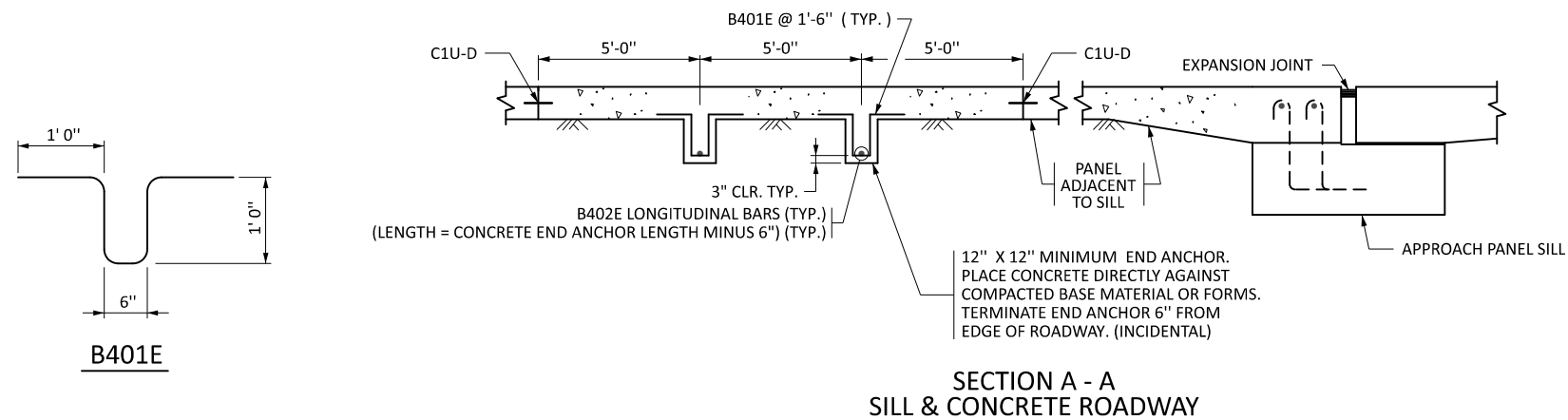


STANDARD PLAN

|            |              |
|------------|--------------|
| TRUNK HWY. | TOTAL SHEETS |
|------------|--------------|



**SILL & CONCRETE ROADWAY**  
(SQUARE TO 15° APPROACH PANEL SHOWN)



**NOTES:**

FURNISH AND INSTALL DEFORMED EPOXY COATED REBARS IN ACCORDANCE WITH SPEC. 3301. PROVIDE 3" MINIMUM CONCRETE COVER EXCEPT AS NOTED.

THE PAVEMENT END ANCHOR IS INCIDENTAL FOR WHICH NO DIRECT PAYMENT WILL BE MADE.

PROVIDE A MINIMUM LAP LENGTH OF 1'-11" FOR B402E BARS.

LEAD EXPERT OFFICE  
CURT TURGEON  
DIRECTOR  
OFFICE OF MATERIALS & ROAD RESEARCH



PAVEMENT END ANCHORS UNDER CONCRETE PAVEMENT  
(APPLIES TO GRADES LESS THAN 4%)

APPROVED: 04-16-2024  
REVISED:

*Thomas Styrbicki*  
THOMAS STYRBICKI  
STATE DESIGN ENGINEER

STANDARD PLAN  
5-297.235

2 OF 2

STANDARD PLAN

STATE PROJ. NO.

SHEET NO.

TRUNK HWY.

TOTAL SHEETS