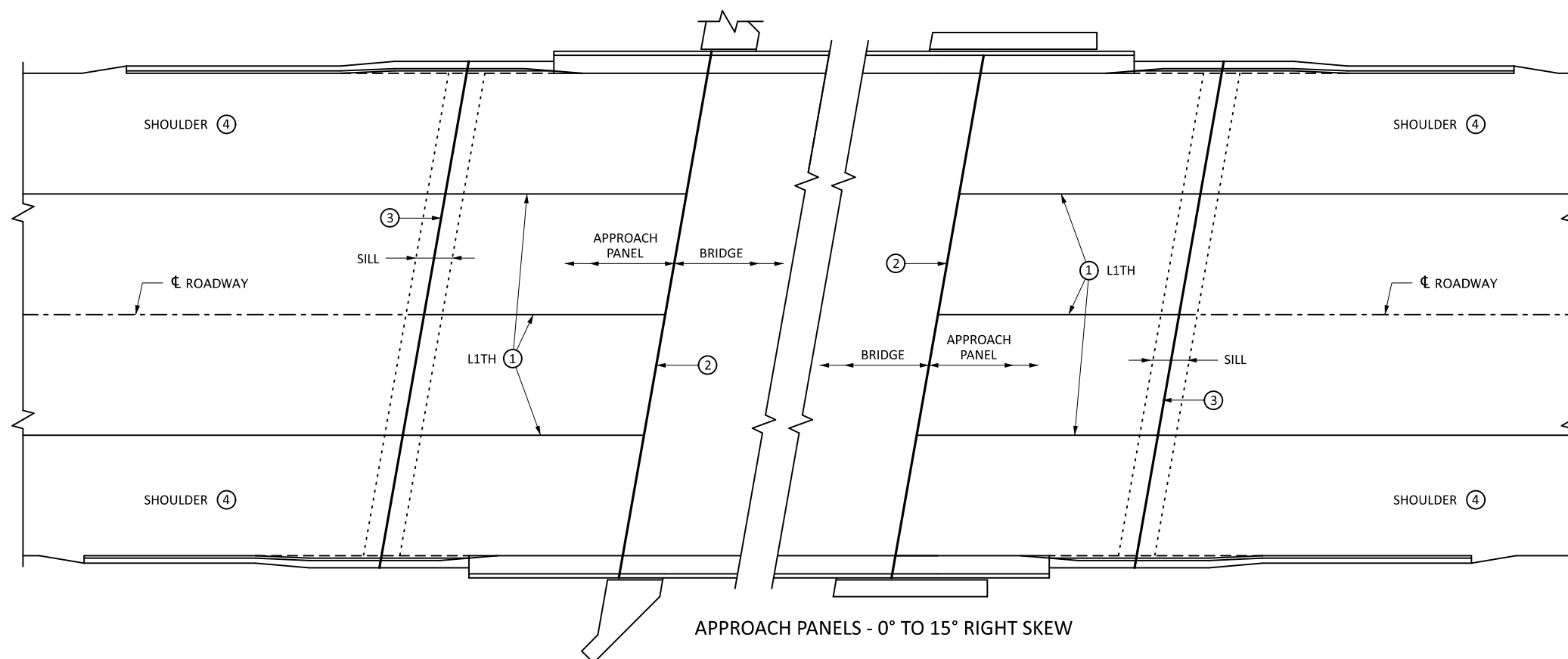


APPROACH PANELS - 0° TO 15° LEFT SKEW



APPROACH PANELS - 0° TO 15° RIGHT SKEW

APPROACH PANEL JOINT LAYOUT NOTES:

REFER TO STANDARD PLAN SHEET 5-297.226 FOR ADDITIONAL INFORMATION AND DETAILS FOR THE VARIOUS JOINT TYPES.

SAWCUT ALL JOINTS. SAWCUTS SHALL BE MADE WHILE THE CONCRETE IS STILL GREEN. WHEN A CONCRETE WEARING COURSE IS SPECIFIED, SAWCUT THROUGH BOTH THE WEARING COURSE AND THE UNDERLYING APPROACH SLAB IN A SINGLE OPERATION.

- ① L1TH LONGITUDINAL JOINT. SEE STANDARD PLAN 5-297.226 FOR REINFORCEMENT LAP LENGTH REQUIREMENTS FOR STAGED CONSTRUCTION.
- ② C2H CONTRACTION JOINT ON INTEGRAL ABUTMENT, SEMI-INTEGRAL ABUTMENT, AND PARAPET ABUTMENT BRIDGES WITH AN END BLOCK. WATERPROOF EXPANSION DEVICE ON PARAPET ABUTMENT BRIDGES WITH DAVIDSON DETAIL (REFER TO BRIDGE PLANS).
- ③ REFER TO STANDARD PLAN 5-297.223 FOR EXPANSION JOINT TYPE. EXPANSION JOINT IS PAID FOR SEPARATELY, MEASURED FROM BACK OF CURB OR BARRIER/PARAPET TO BACK OF CURB OR BARRIER/PARAPET.
- ④ REFER TO ROADWAY PLAN FOR PAVEMENT, LANE AND SHOULDER WIDTHS AND CONFIGURATION.

LEAD EXPERT OFFICE
EDWARD LUTGEN
OFFICE DIRECTOR
BRIDGE OFFICE



BRIDGE APPROACH PANEL JOINT LAYOUT
(0° UP TO 15° SKEWS)

APPROVED: 04-16-2024
REVISED:

Tom Styrbicki
THOMAS STYRBICKI
STATE DESIGN ENGINEER

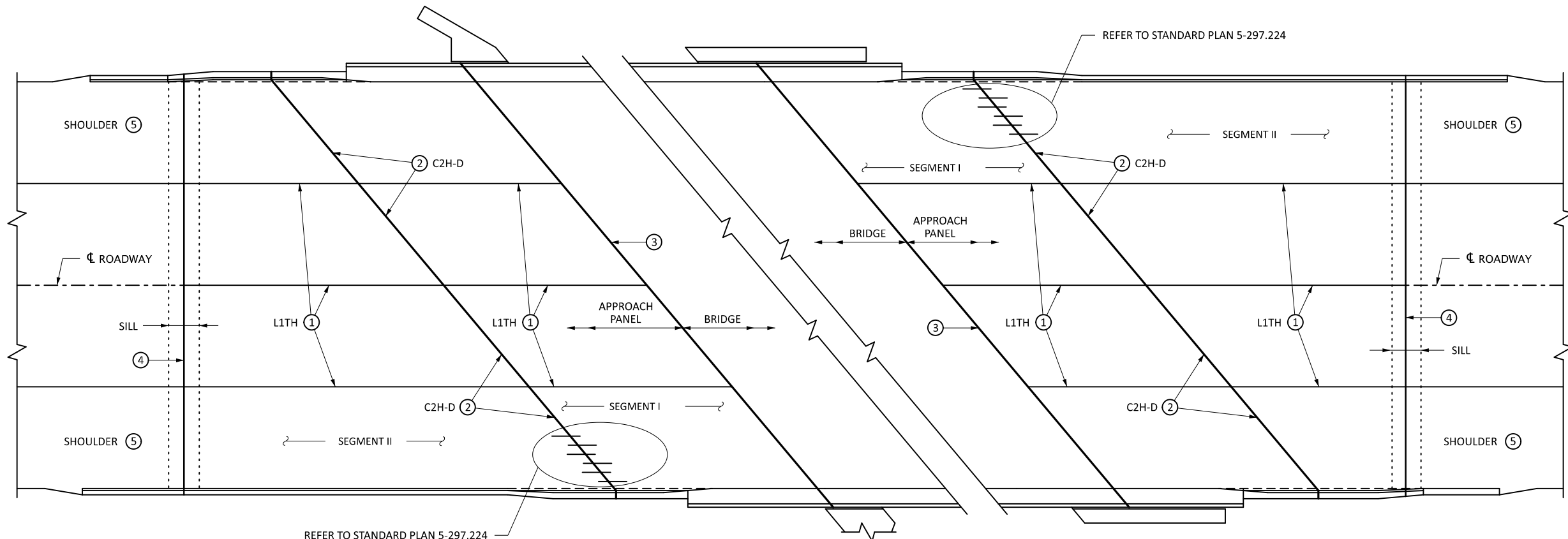
STANDARD PLAN
5-297.227

1 OF 2

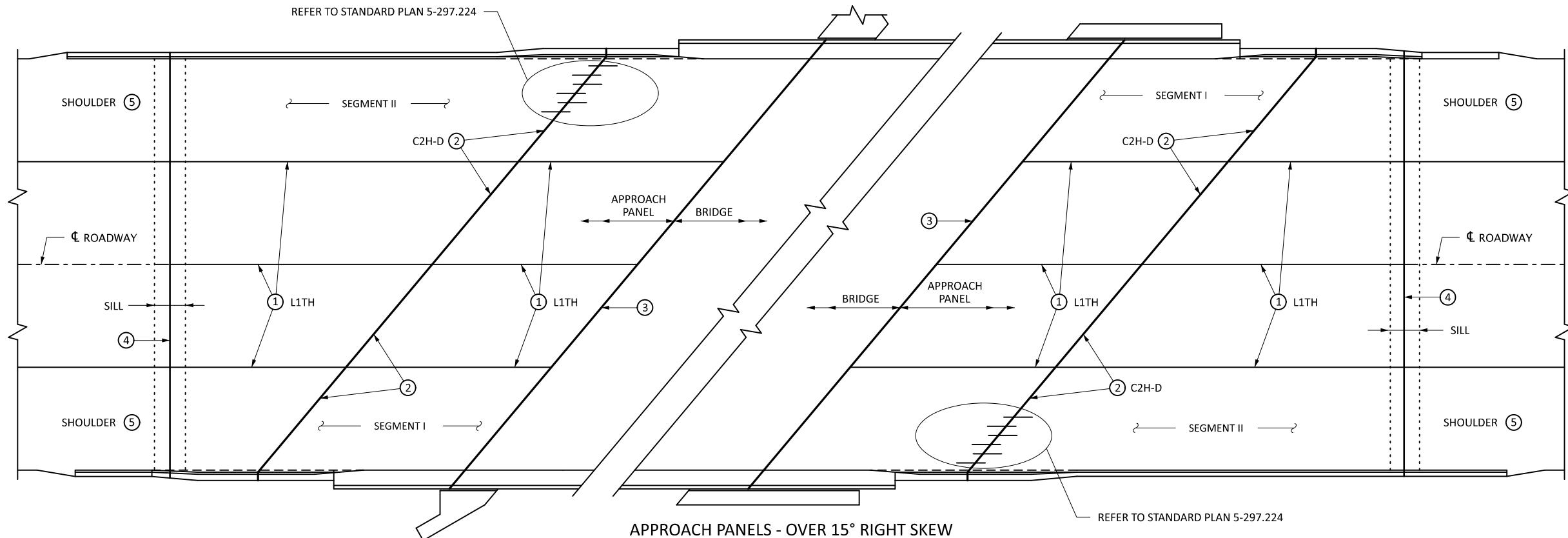
STANDARD PLAN

STATE PROJ. NO.
TRUNK HWY.

SHEET NO.
TOTAL SHEETS



APPROACH PANELS - OVER 15° LEFT SKEW




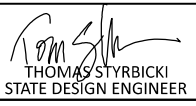
APPROACH PANELS - OVER 15° RIGHT SKEW

APPROACH PANEL JOINT LAYOUT NOTES:

REFER TO STANDARD PLAN SHEET 5-297.226 FOR ADDITIONAL INFORMATION AND DETAILS FOR THE VARIOUS JOINT TYPES.

SAWCUT ALL JOINTS. SAWCUTS SHALL BE MADE WHILE THE CONCRETE IS STILL GREEN. WHEN A CONCRETE WEARING COURSE IS SPECIFIED, SAWCUT THROUGH BOTH THE WEARING COURSE AND THE UNDERLYING APPROACH SLAB IN A SINGLE OPERATION.

- ① L1TH LONGITUDINAL JOINT. SEE STANDARD PLAN 5-297.226 FOR REINFORCEMENT LAP LENGTH REQUIREMENTS FOR STAGED CONSTRUCTION.
- ② JOINT TYPE C2H-D WITH 5' LONG BARS AT 12" SPACING PLACED 4" UP FROM BOTTOM OF SLAB, PARALLEL TO THE CENTERLINE OF THE ROADWAY. REFER TO STANDARD PLAN 5-297.224 FOR ADDITIONAL INFORMATION AND DETAILS.
- ③ C2H CONTRACTION JOINT ON INTEGRAL ABUTMENT, SEMI-INTEGRAL ABUTMENT, AND PARAPET ABUTMENT BRIDGES WITH AN END BLOCK. WATERPROOF EXPANSION DEVICE ON PARAPET ABUTMENT BRIDGES WITH DAVIDSON DETAIL (REFER TO BRIDGE PLANS).
- ④ REFER TO STANDARD PLAN 5-297.224 FOR EXPANSION JOINT TYPE. EXPANSION JOINT IS PAID FOR SEPARATELY, MEASURED FROM BACK OF CURB OR BARRIER/PARAPET TO BACK OF CURB OR BARRIER/PARAPET.
- ⑤ SEE ROADWAY PLAN FOR PAVEMENT, LANE AND SHOULDER WIDTHS AND CONFIGURATION.

LEAD EXPERT OFFICE	EDWARD LUTGEN OFFICE DIRECTOR BRIDGE OFFICE		BRIDGE APPROACH PANEL JOINT LAYOUT (GREATER THAN 15° SKEWS)	APPROVED: 04-16-2024	 THOMAS STYRBICKI STATE DESIGN ENGINEER	STANDARD PLAN	2 OF 2
				REVISED:		STANDARD PLAN 5-297.227	
			STANDARD PLAN	STATE PROJ. NO.	SHEET NO.		
				TRUNK HWY.	TOTAL SHEETS		