

5.28.20 E.T.

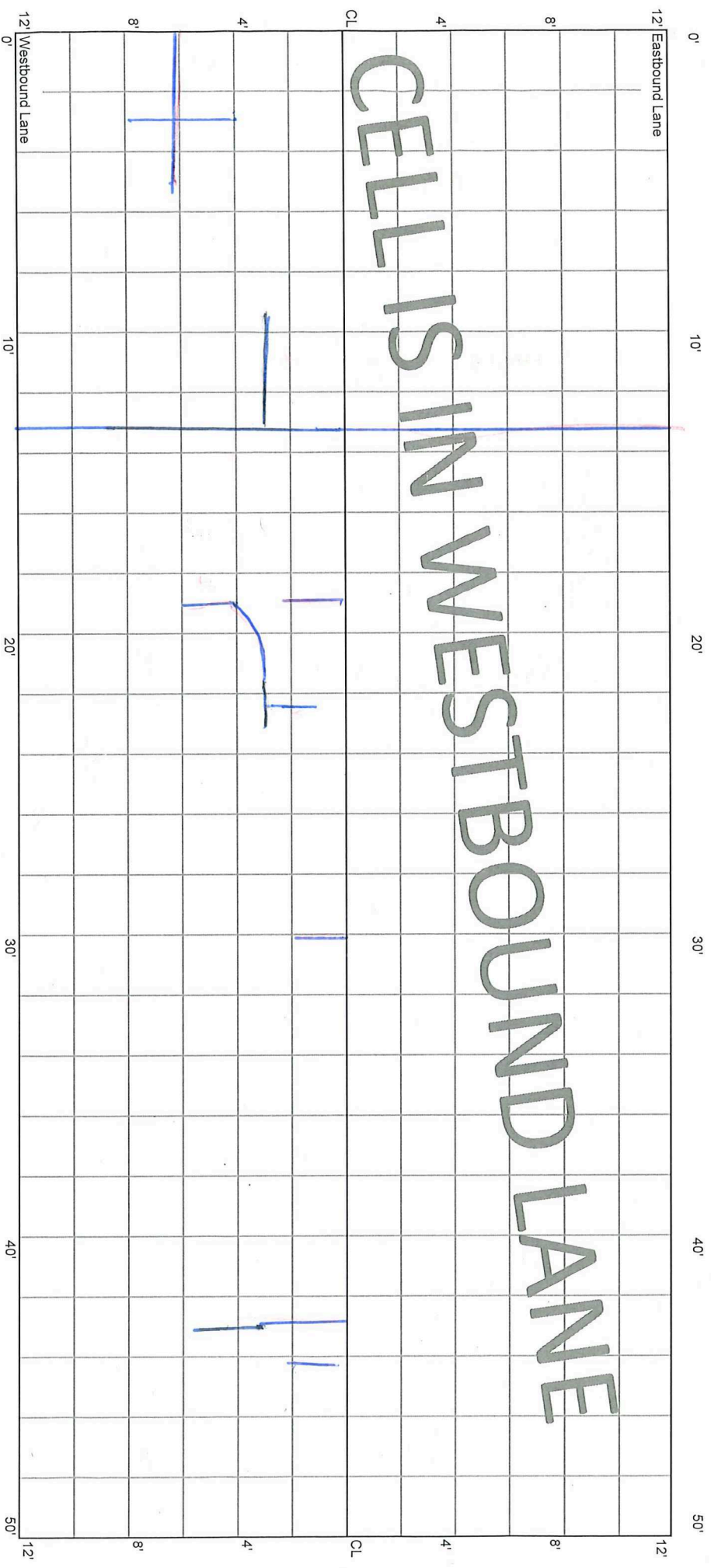
10.14.20
1.4.21

File 70TH ST
9.14.21

CELL 7003W
0 - 50 ft

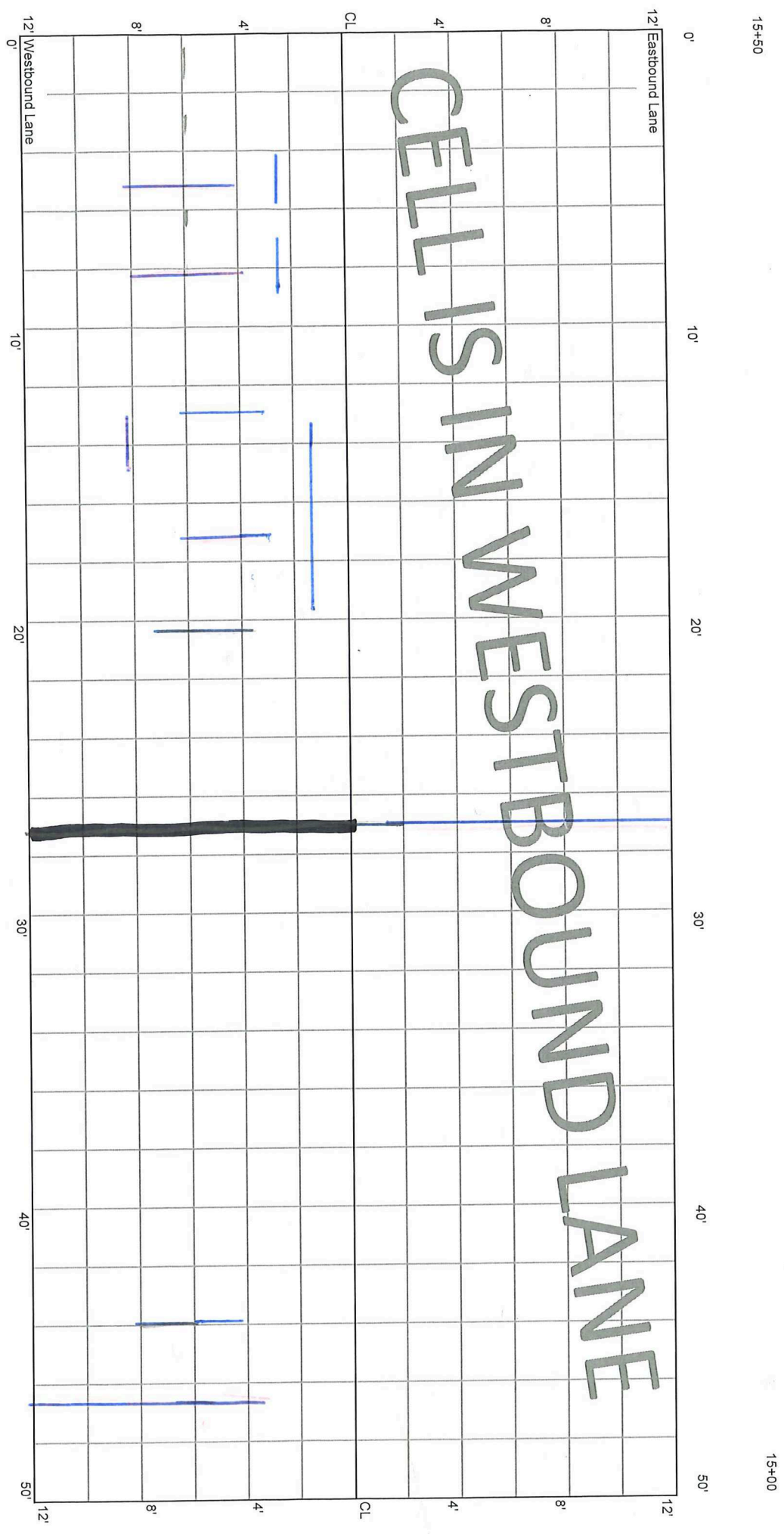
16+00

15+50



* Rout & Seal

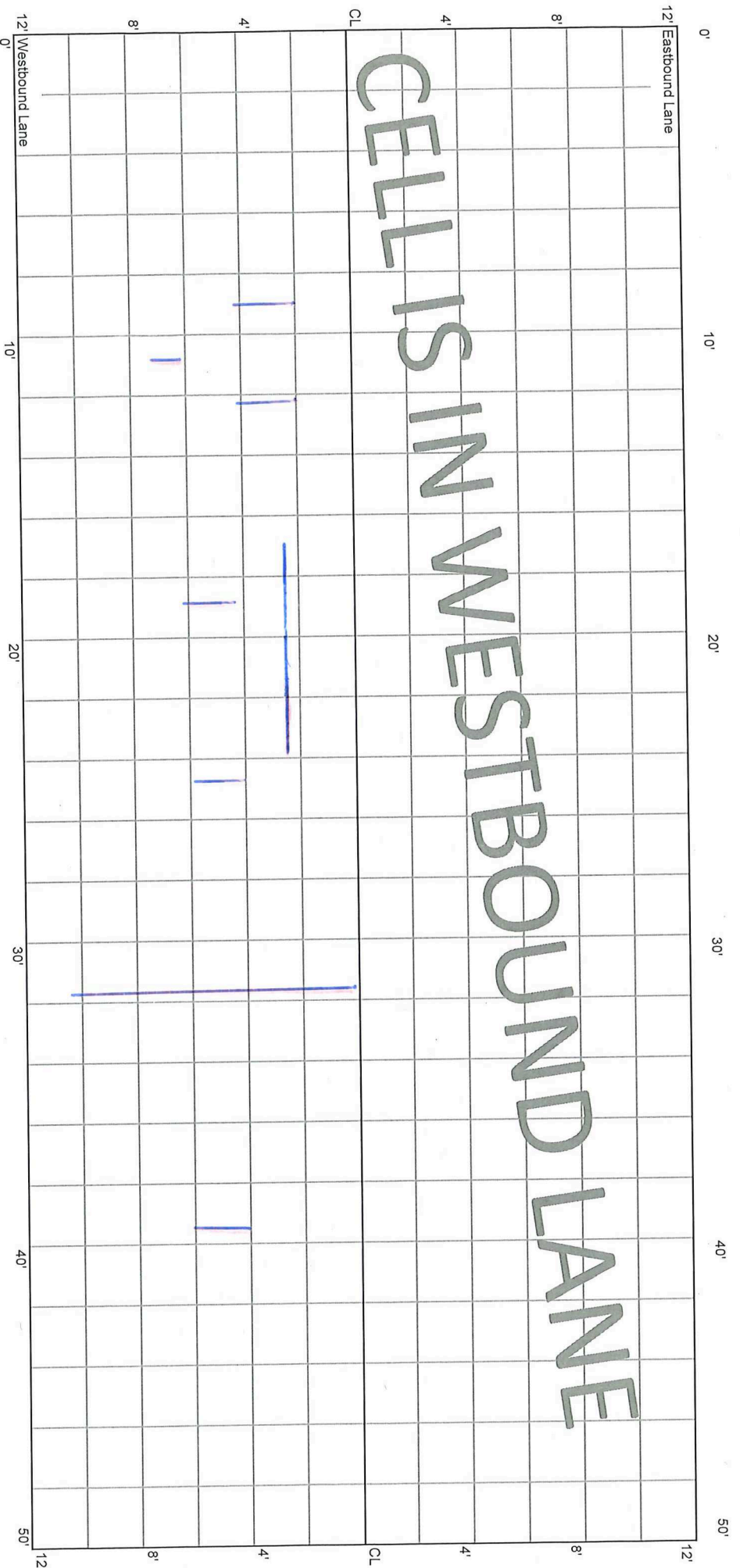
CELL 7003W
50 - 100 ft



CELL 7003W
100 - 150 ft

15+00

14+50

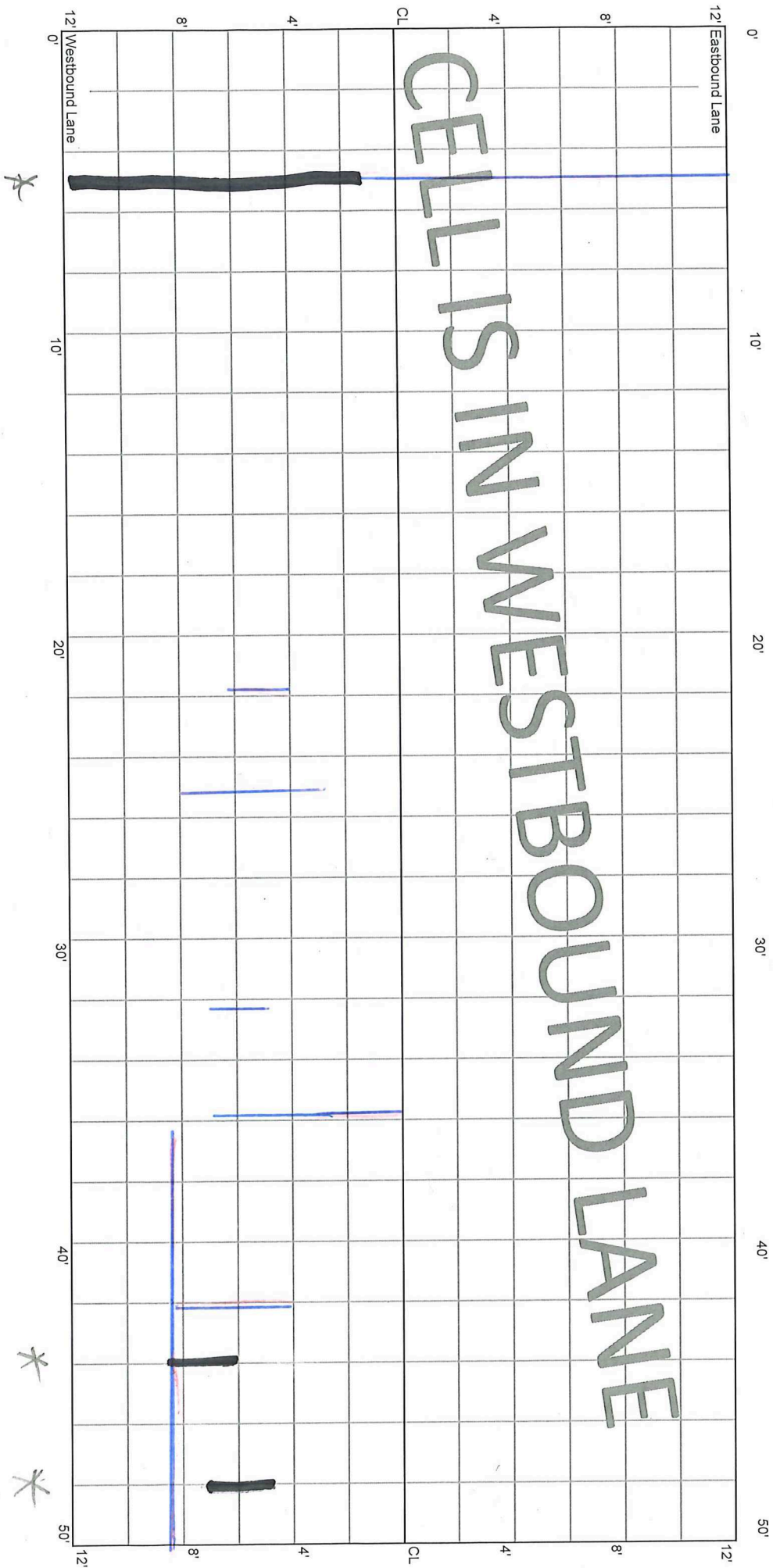


CELLS IN WESTBOUND LANE

CELL 7003W
150 - 200 ft

14+50

14+00

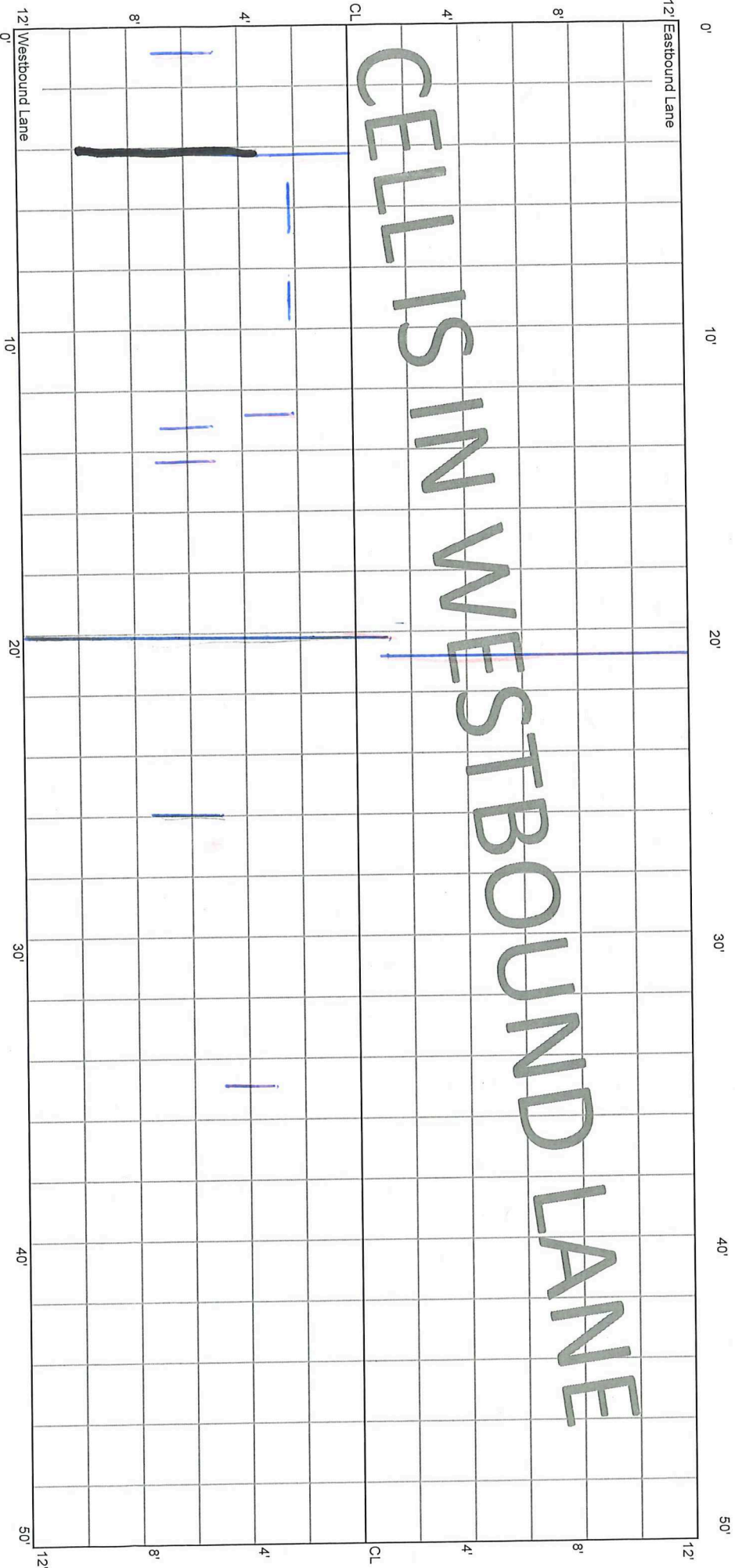


No Seal

CELL 7003W
200 - 250 ft

14+00

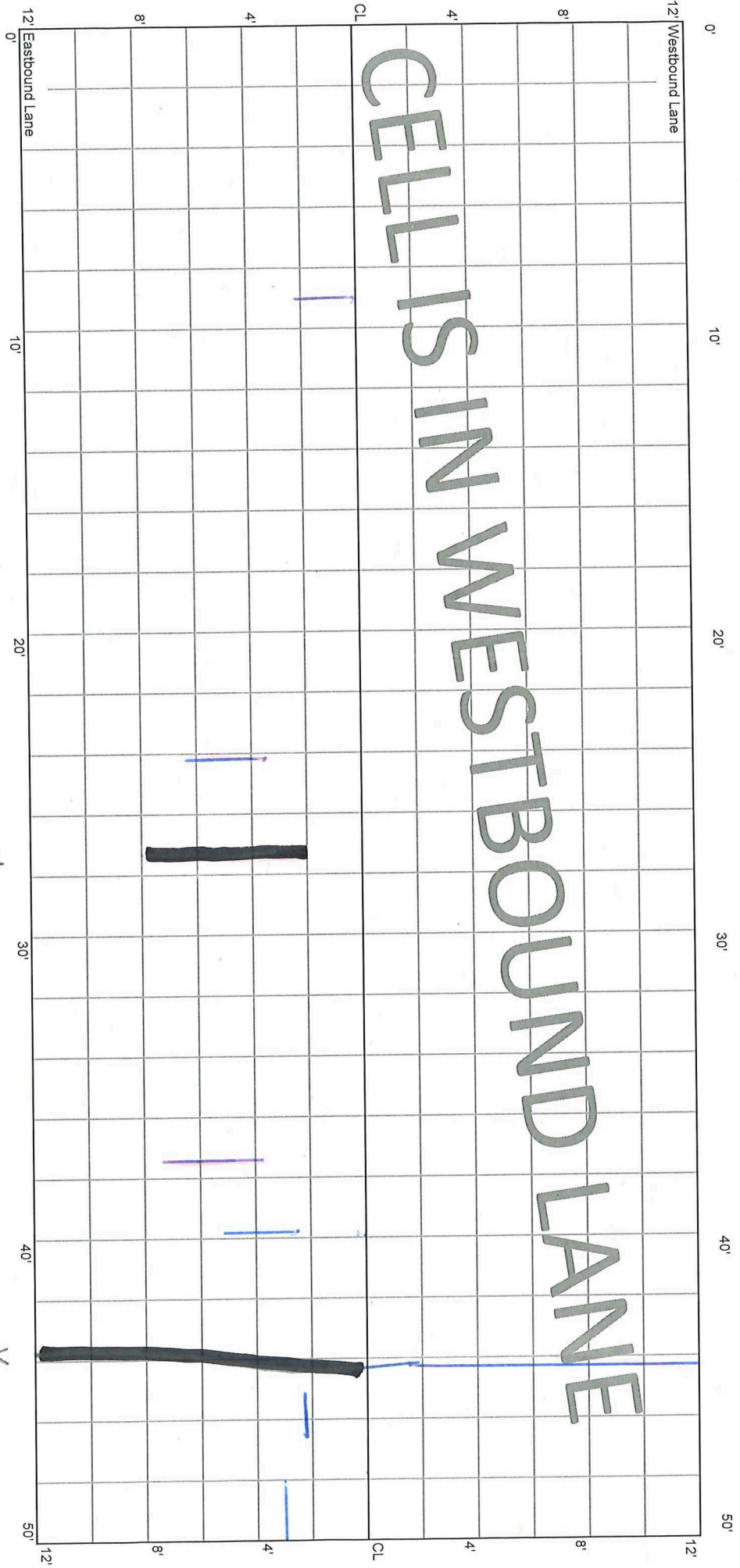
13+50



CELL 7003W
250 - 300 ft

13+50

13+00

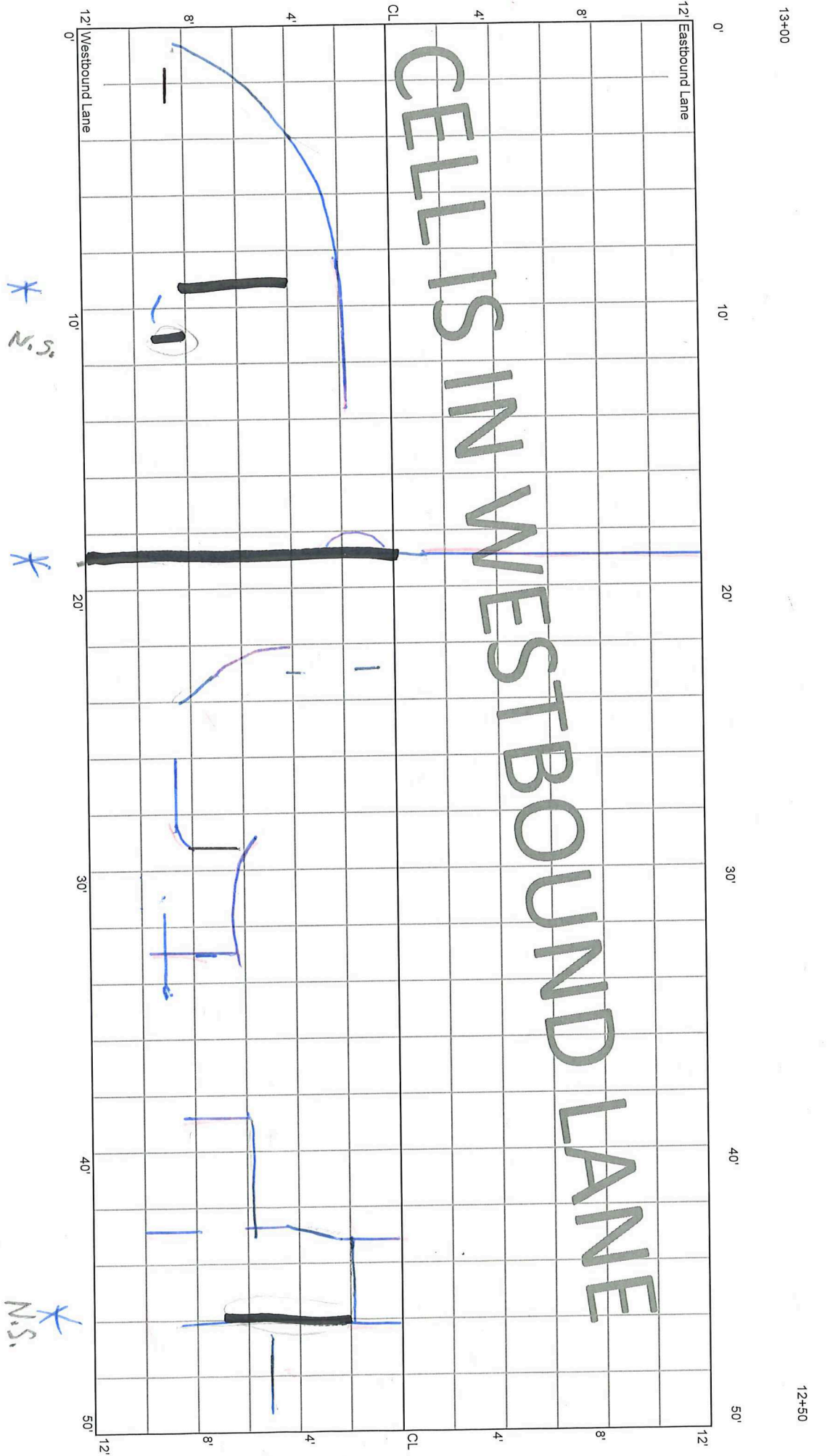


CELL IS IN WESTBOUND LANE

* M

* 162'

CELL 7003W
300 - 350 ft



CELL 7003W
350 - 400 ft

12+50

12+00

12' Westbound Lane

12'

CELLS IN WESTBOUND LANE

12' Eastbound Lane

12'

0' 10' 20' 30' 40' 50'

*

*

*

*

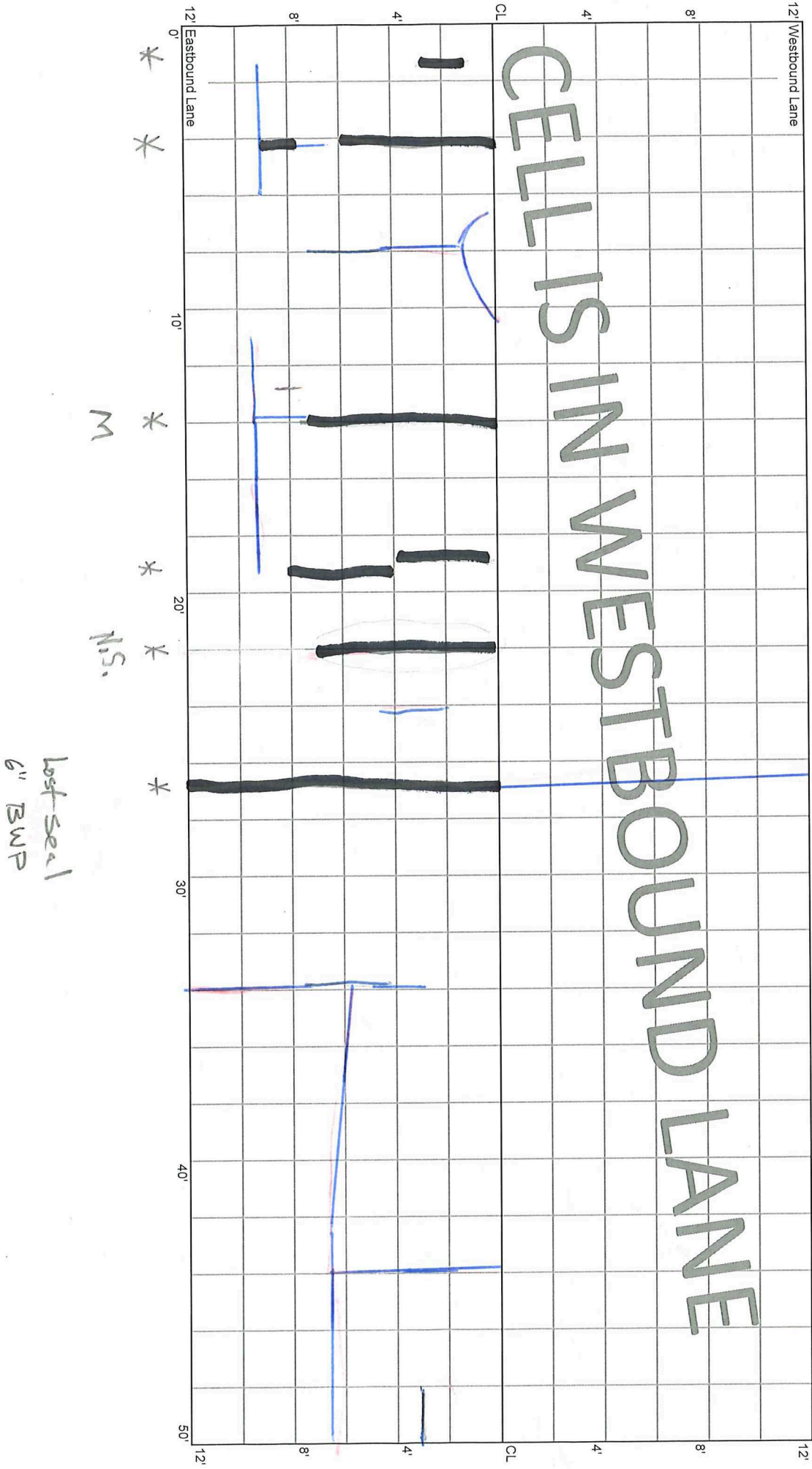
*

*

M

N.S.

lost seal
6" BWP

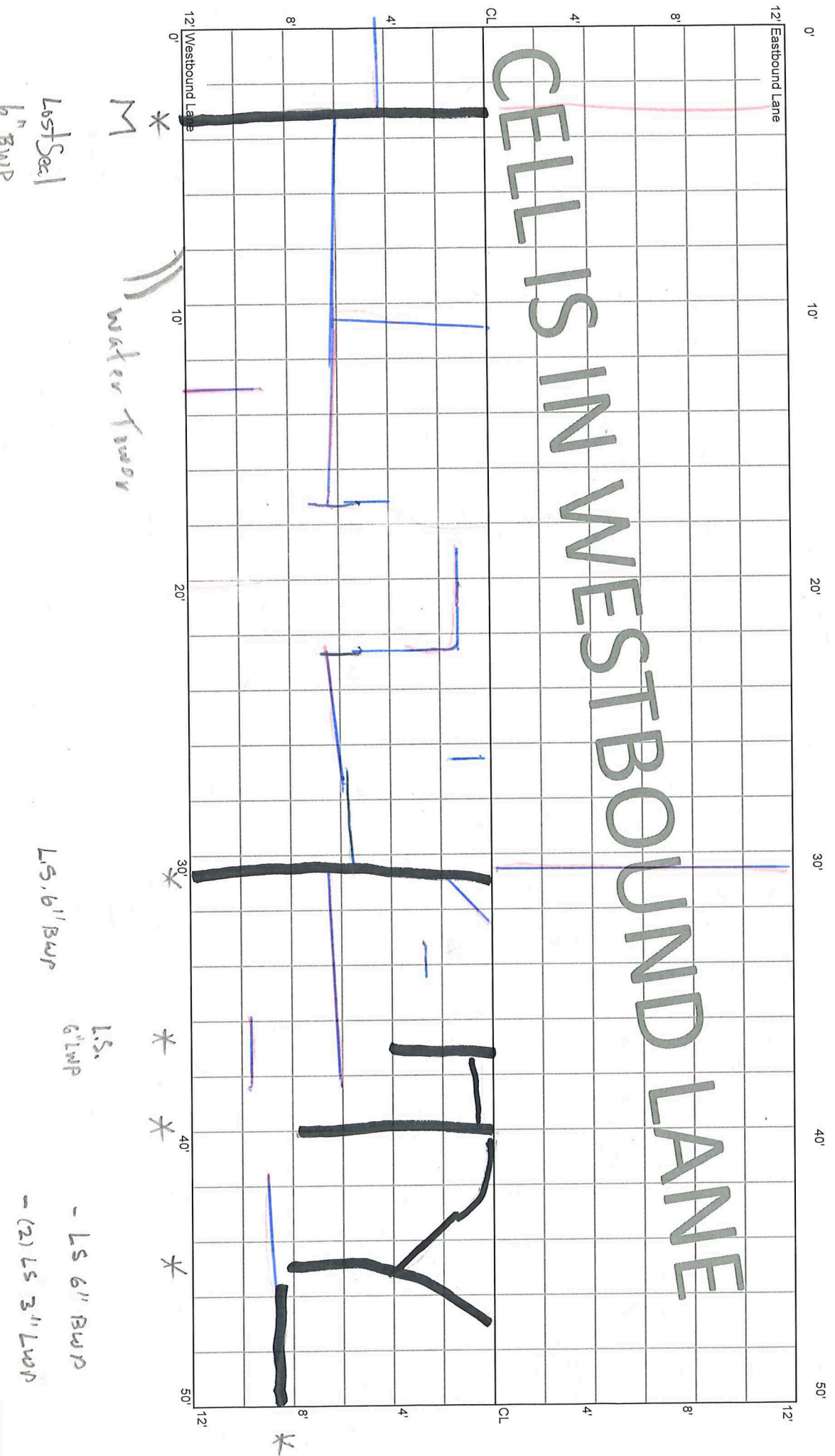


CELL 7003W
400 - 450 ft

12+00

11+50

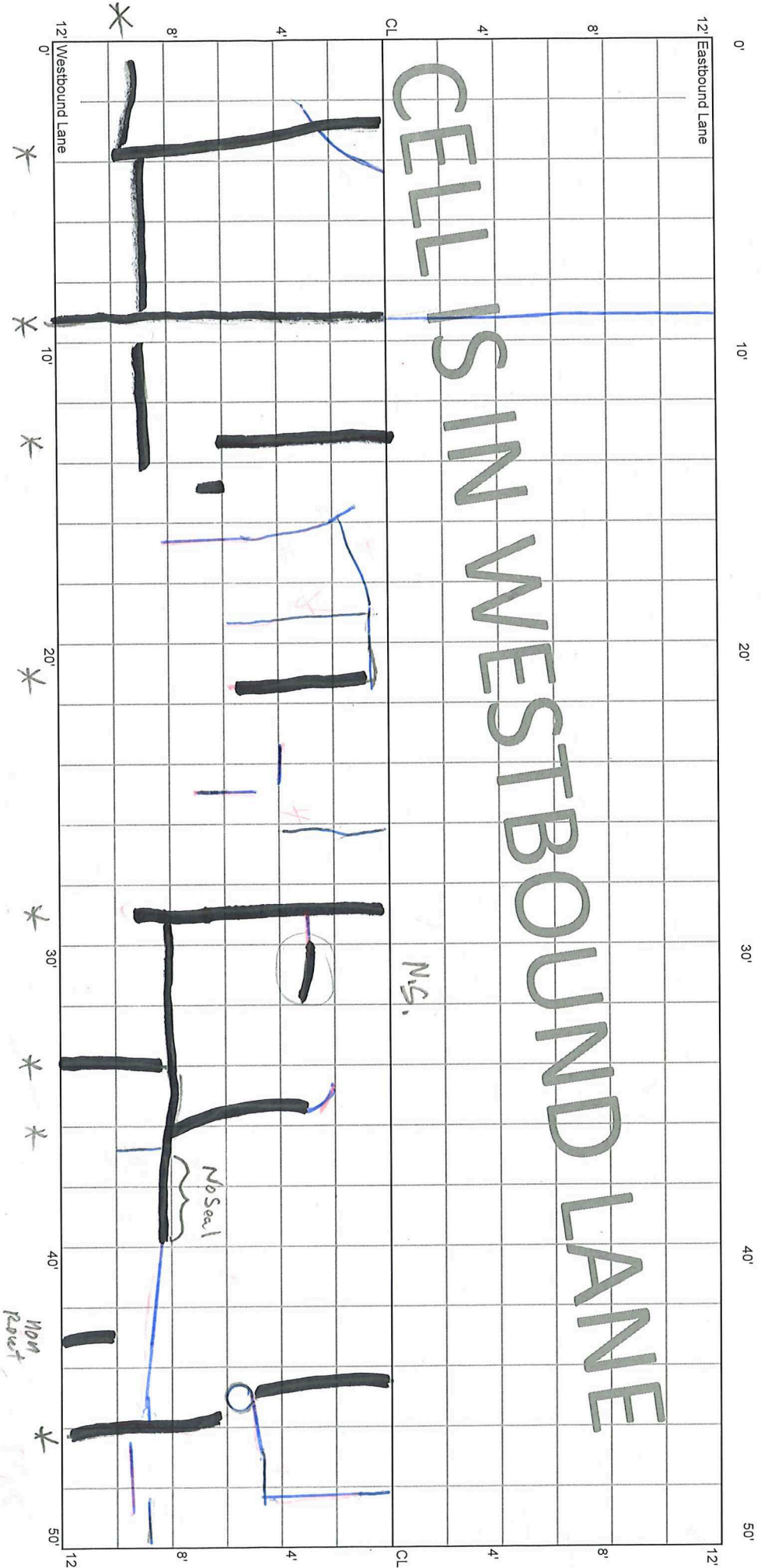
CELLS IN WESTBOUND LANE



CELL 7003W
450 - 500 ft

11+50

11+00



LS
12" RW P

LS
12" RW P

Long.
LS (2) x 36" RW P

LS, 6" RW P
Core hole

CELL 7003W
500 - 550 ft

11+00

10+75

10+50

