

8.25.21 - 36 Trans. crbs outside
Fog line.

5.28.20 E.J.

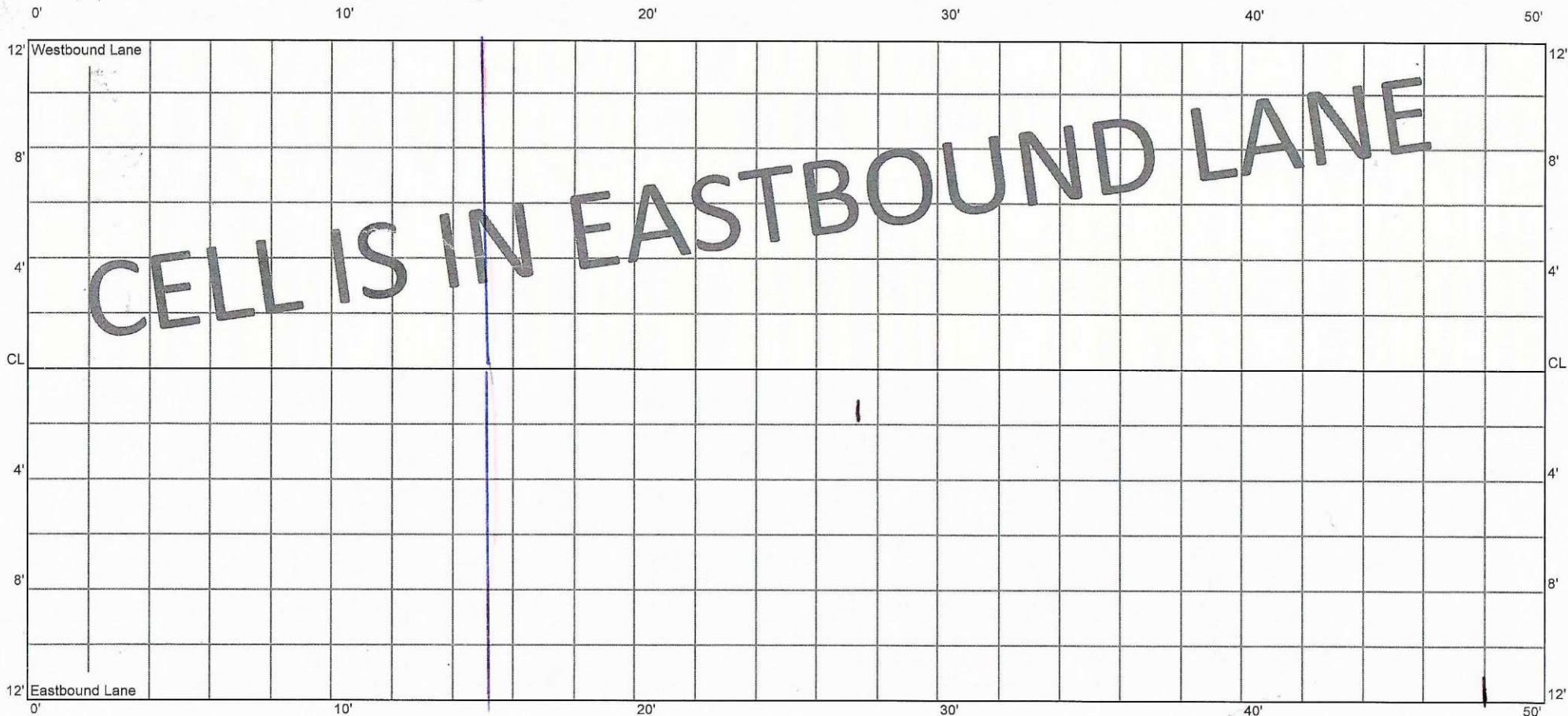
10.14.20 | 1.12.22
1.4.21 | 8.31.22
File 70TH ST | 1.26.23
8.25.21

CELL 7005E
0 - 50 ft

22+00

22+50

Ruton outside of Fogline

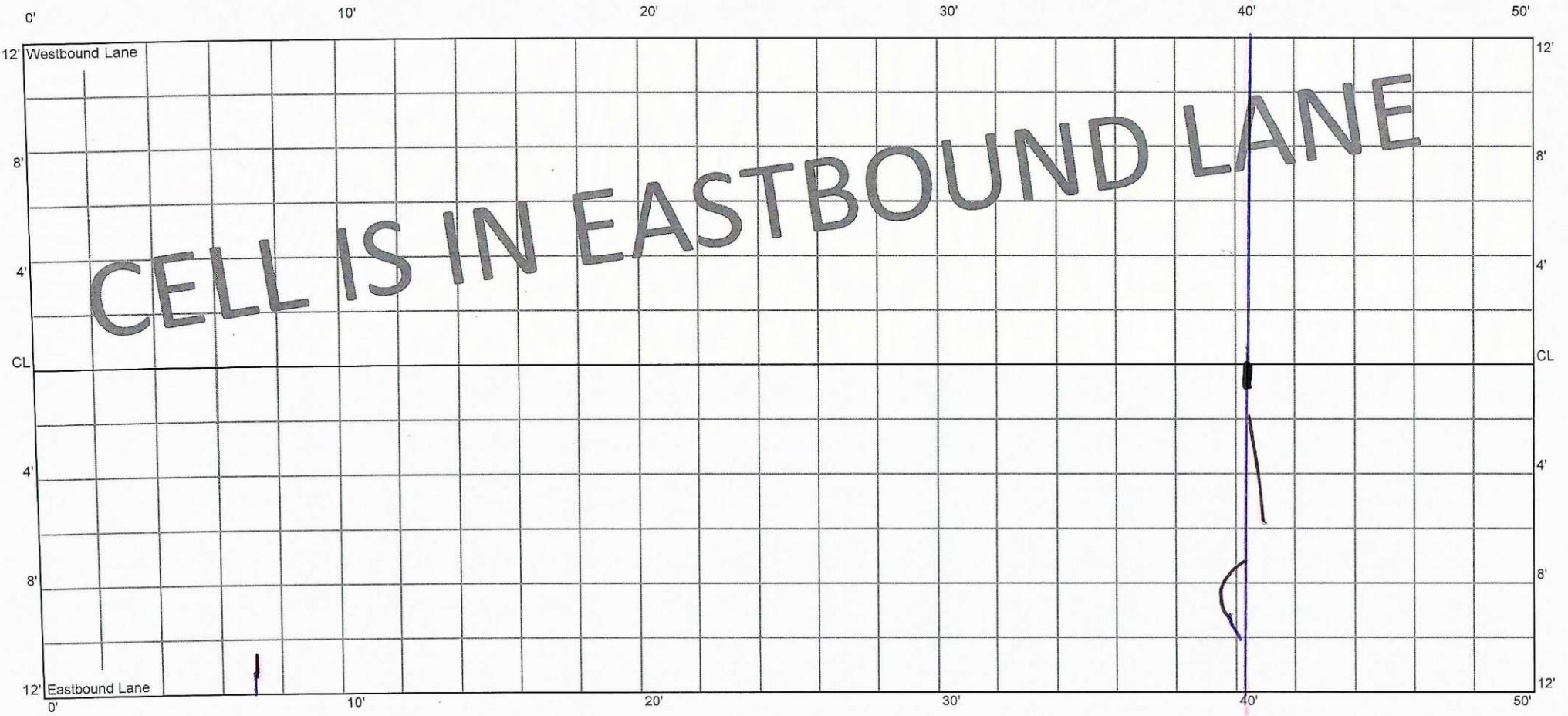


*Rout & Seal

CELL 7005E
50 - 100 ft

22+50

23+00

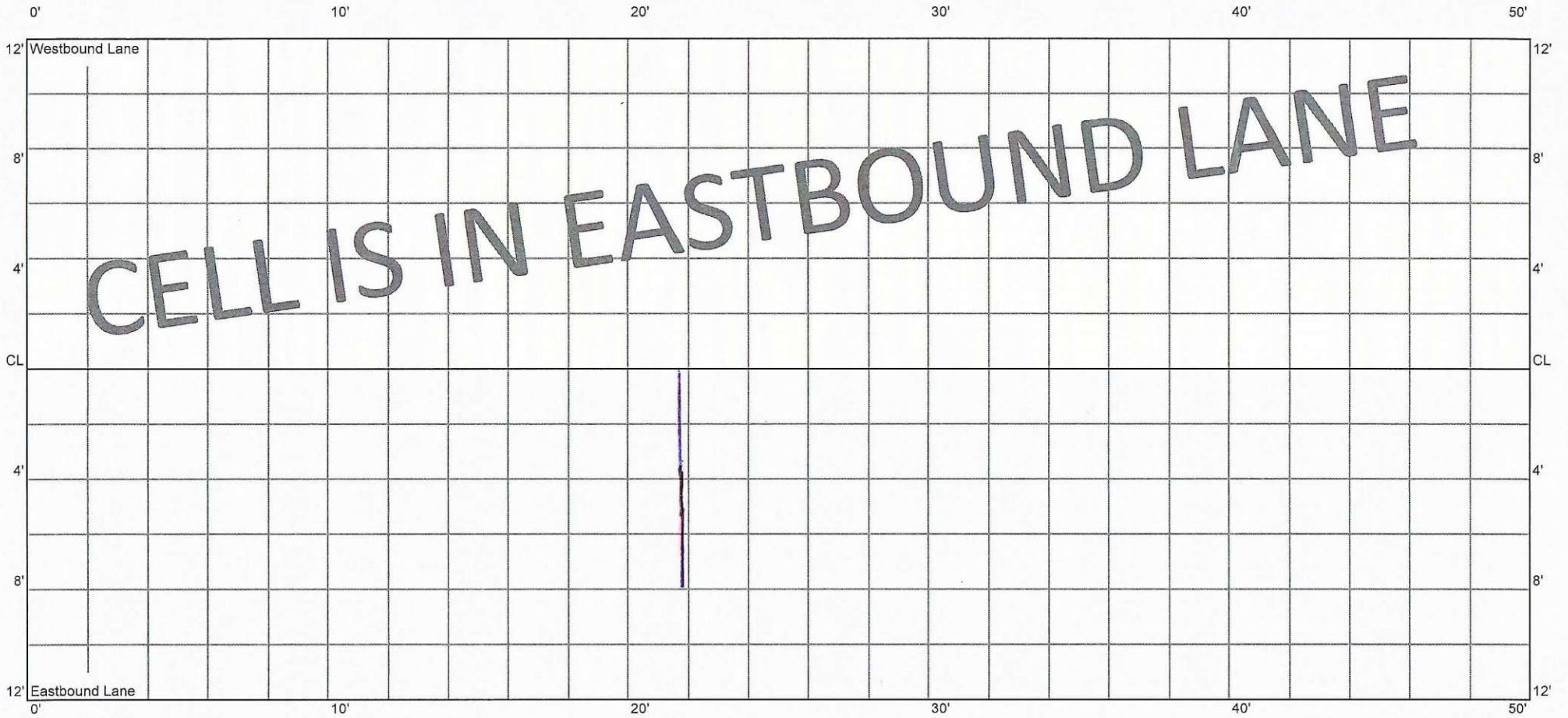


M

CELL 7005E
100 - 150 ft

23+00

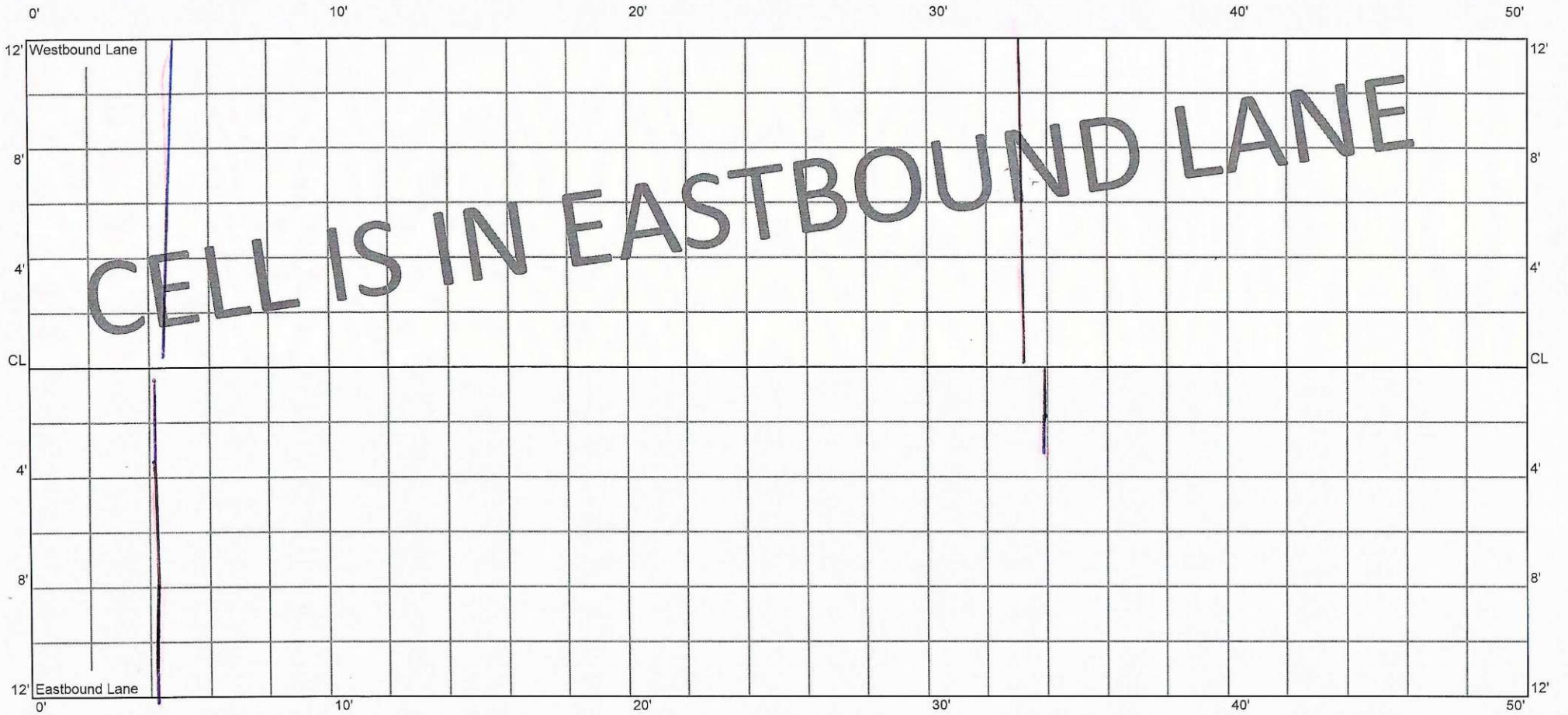
23+50



CELL 7005E
150 - 200 ft

23+50

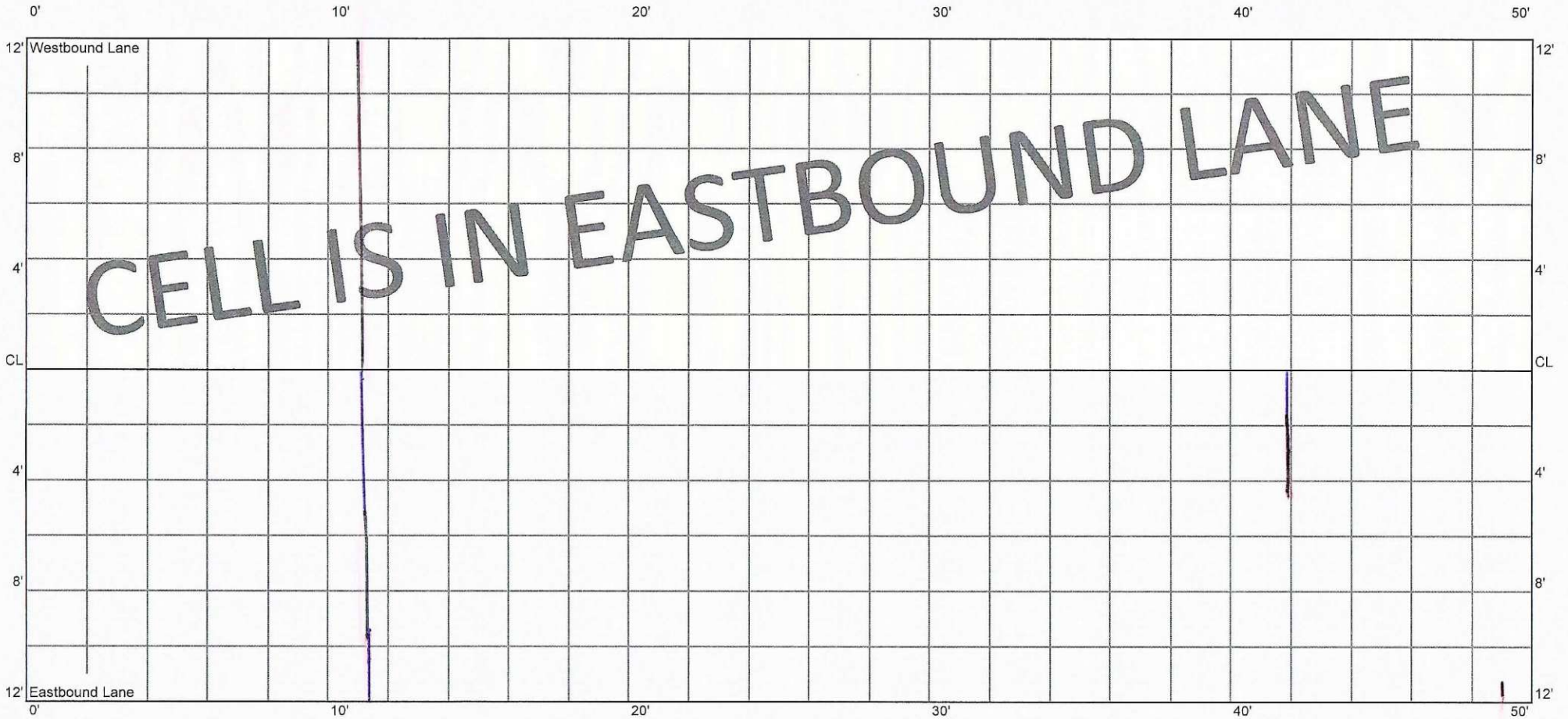
24+00



CELL 7005E
200 - 250 ft

24+00

24+50



M

200-227
Shoulder/Edge work

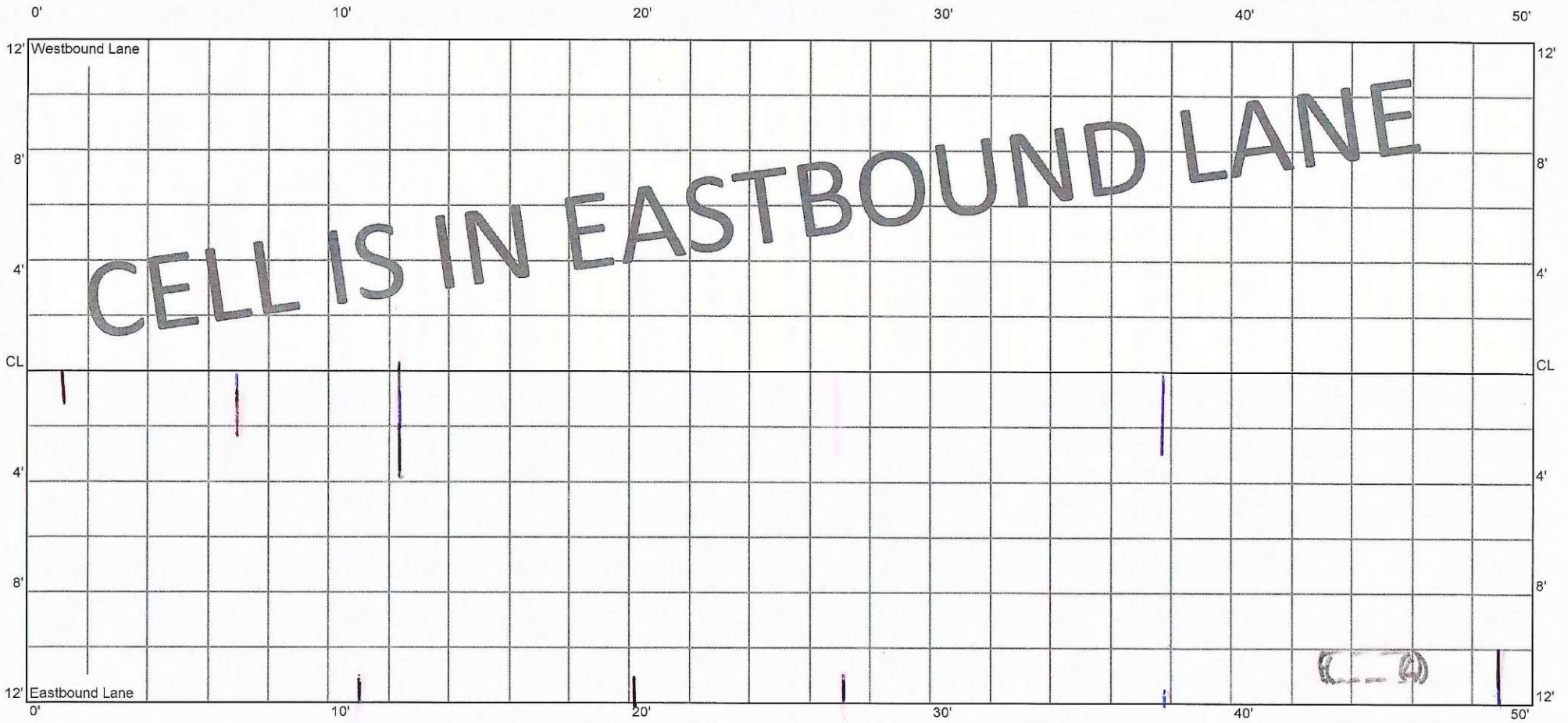
4 1/2

1 1/2

CELL 7005E
250 - 300 ft

24+50

25+00



()

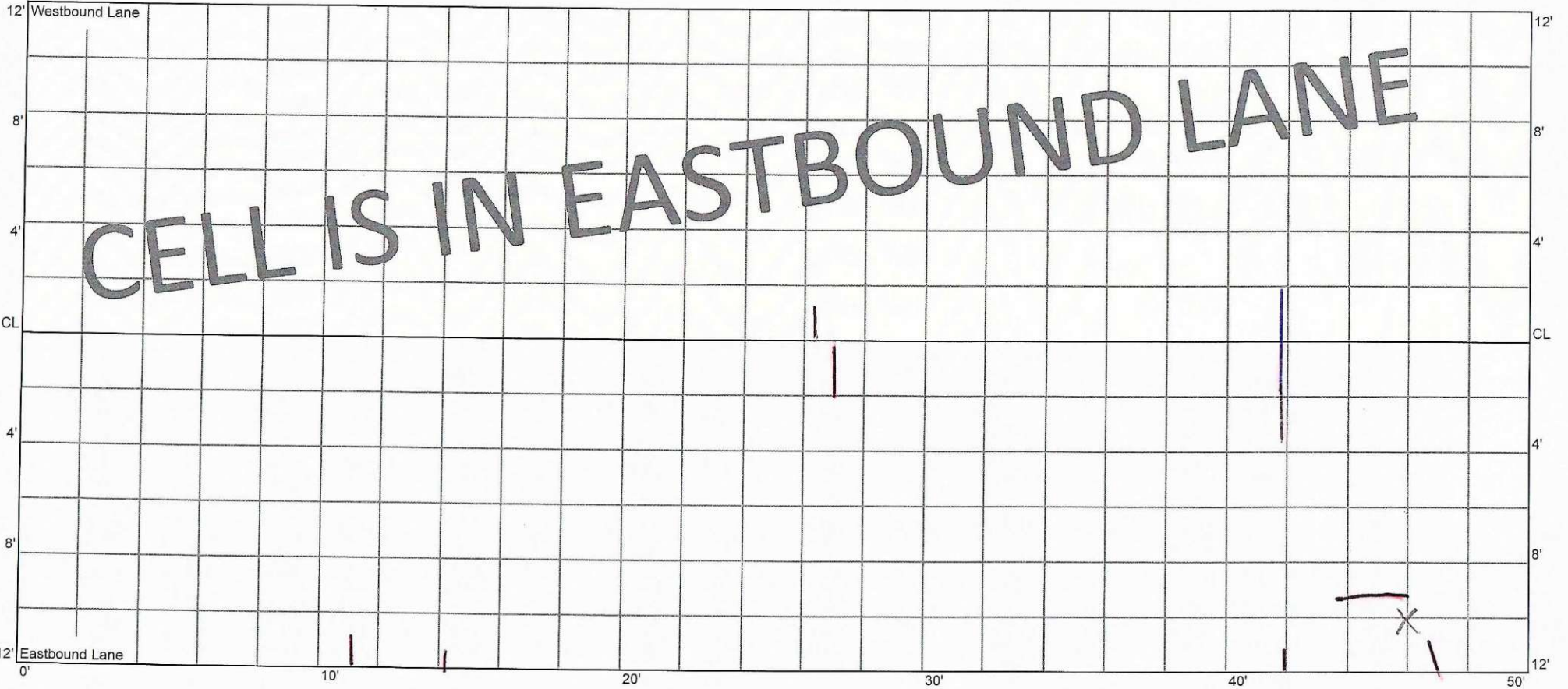
F + P.H
Not Visible

CELL 7005E
300 - 350 ft

25+00

25+50

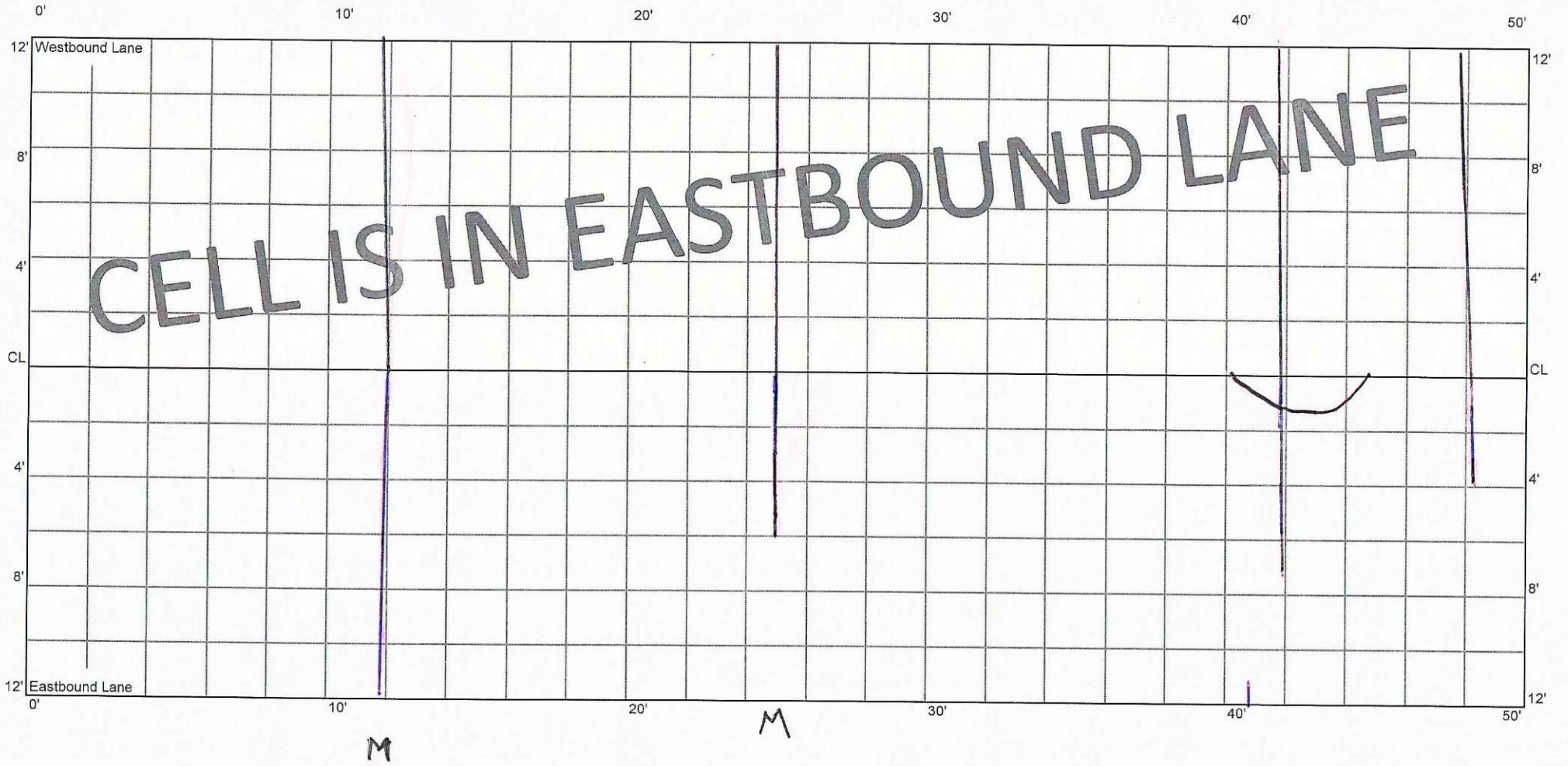
0' 10' 20' 30' 40' 50'



CELL 7005E
350 - 400 ft

25+50

26+00



CELL 7005E
400 - 450 ft

26+00

26+50

0' 10' 20' 30' 40' 50'

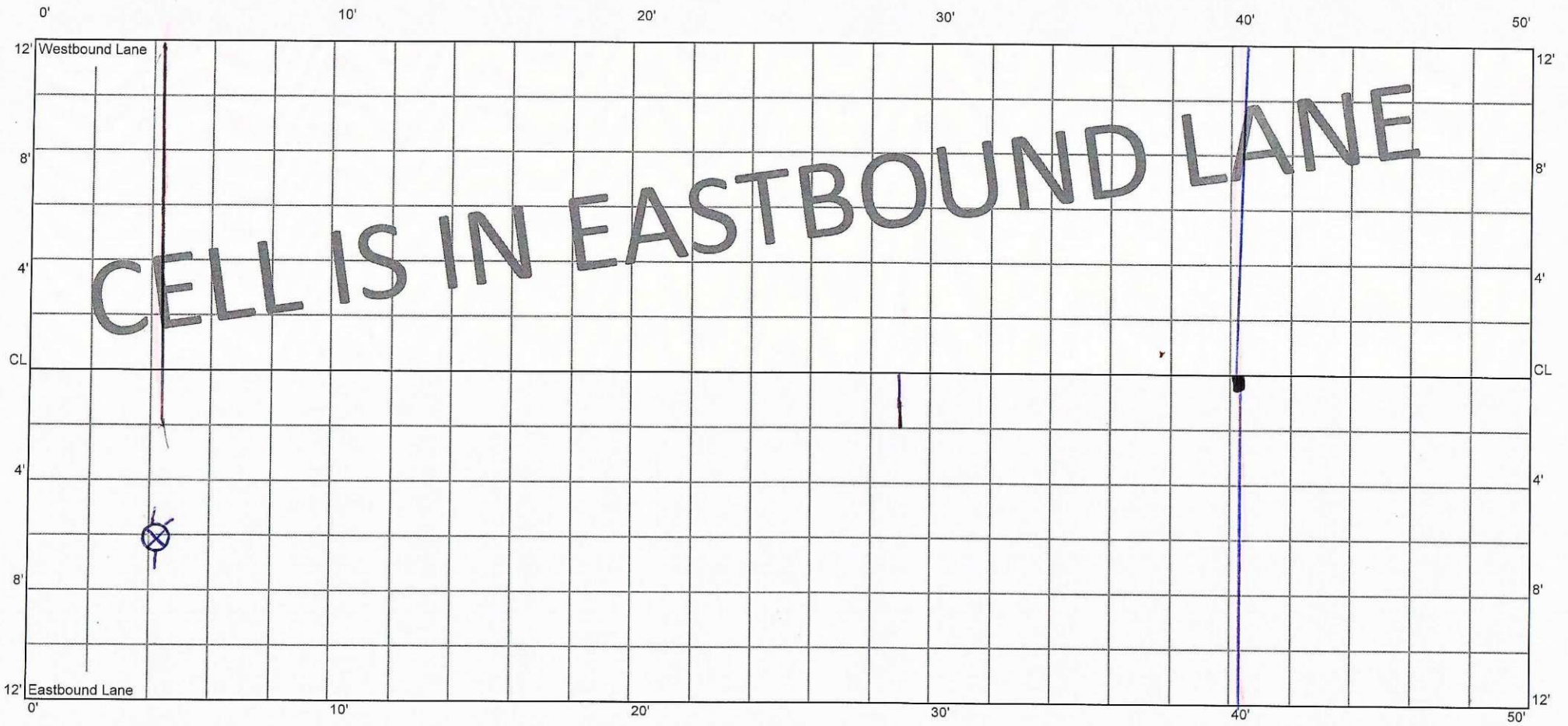


CELL 7005E
450 - 500 ft

26+50

26+58
CL KITTRIDGE

27+00



M

WRIGHT Co
SURVEY MARKER

CELL 7005E
500 - 550 ft

27+00

16+25

27+50

0'

10'

20'

25'

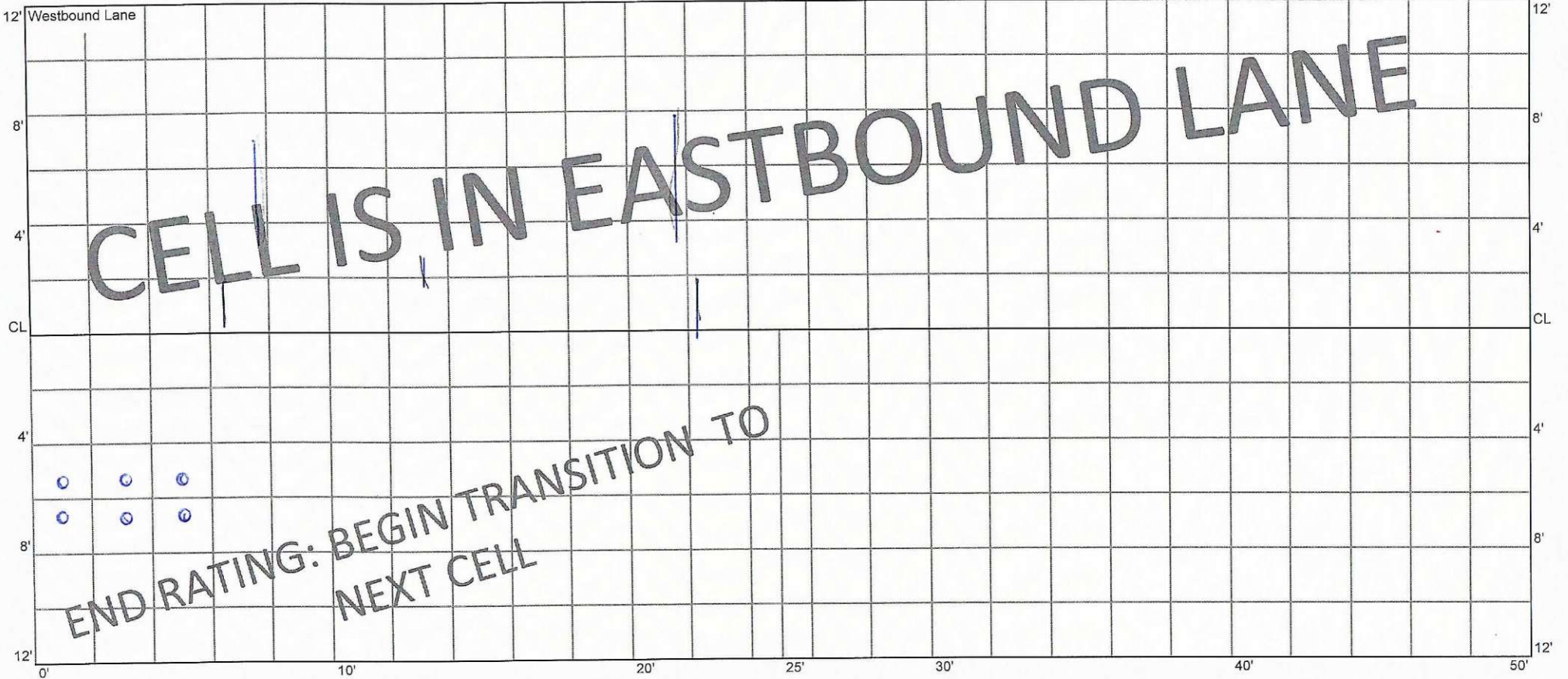
30'

40'

50'

12' Westbound Lane

12'



(0. Oct '20)
cores