

5.28.20 E.T.

10.14.20

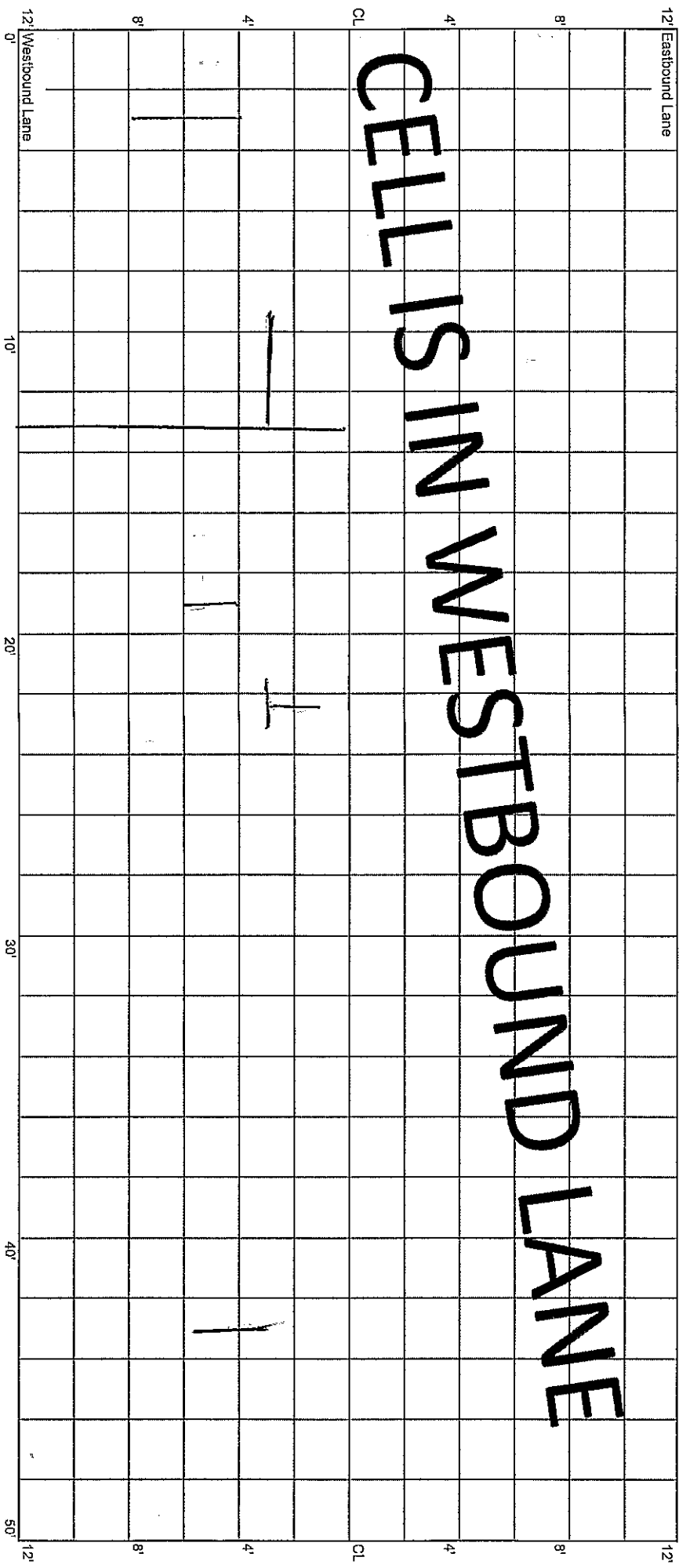
File 70TH ST

CELL 7003W
0 - 50 ft

16+00

15+50

0' 10' 20' 30' 40' 50'

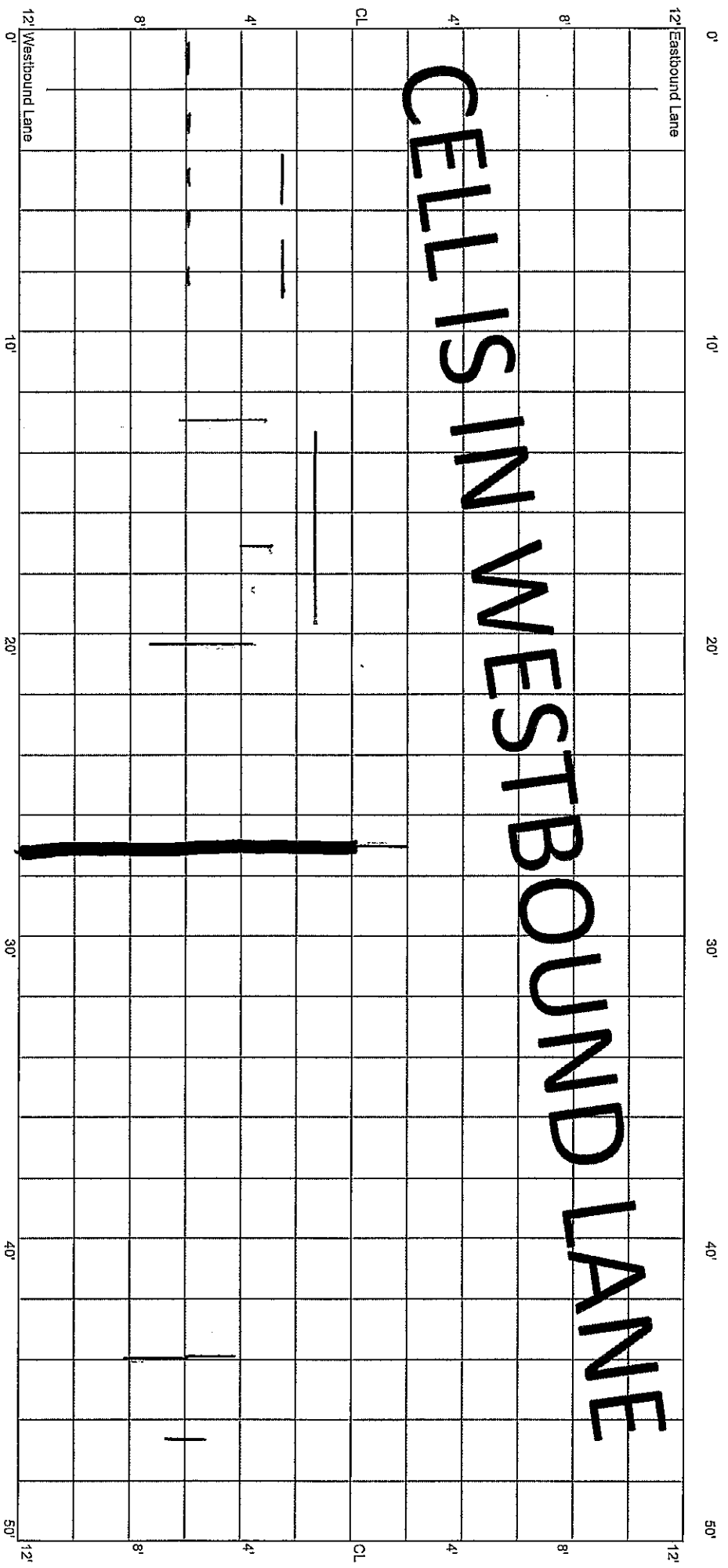


CELLS IN WESTBOUND LANE

* Rout & Seal

CELL 7003W
50 - 100 ft

CELLS IN WESTBOUND LANE



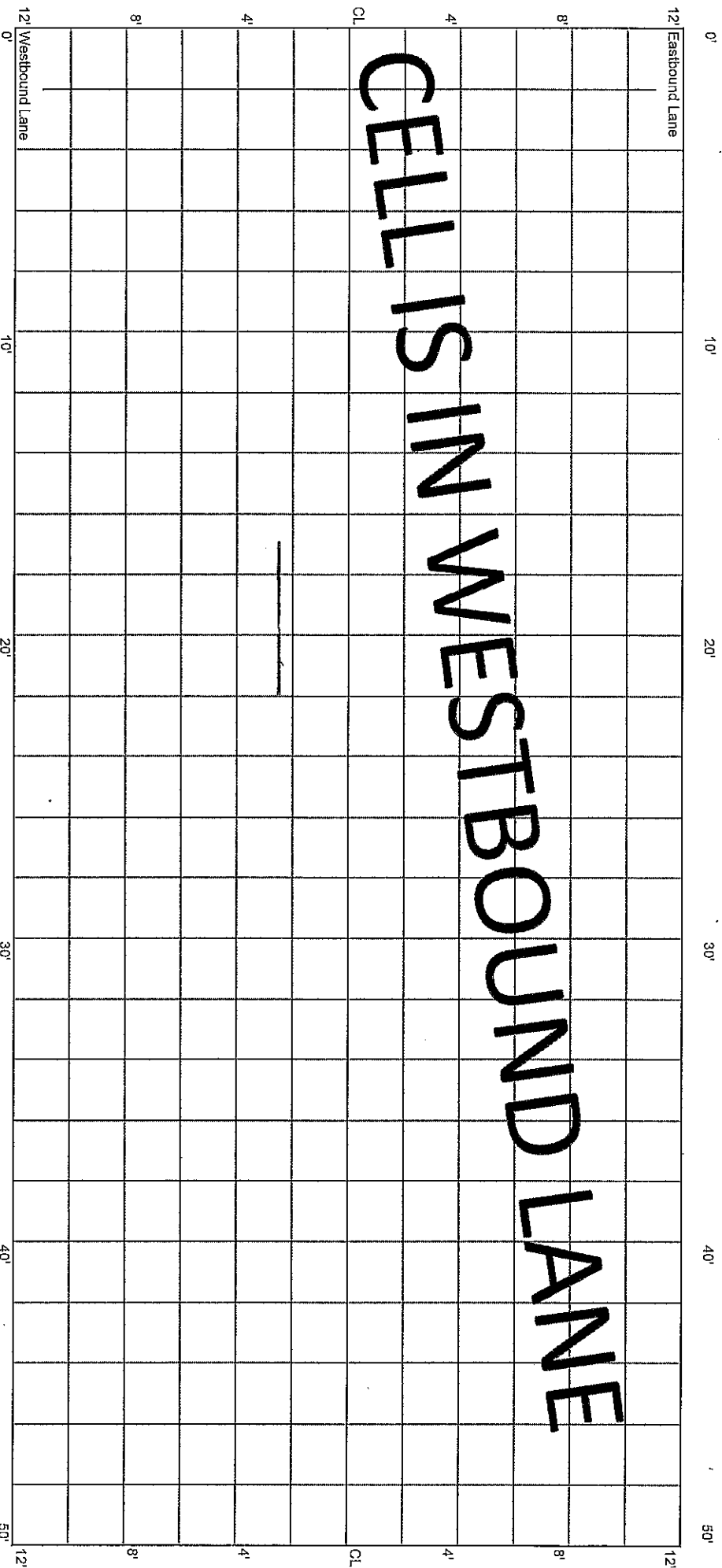
15+50

15+00

CELL 7003W
100 - 150 ft

15+00

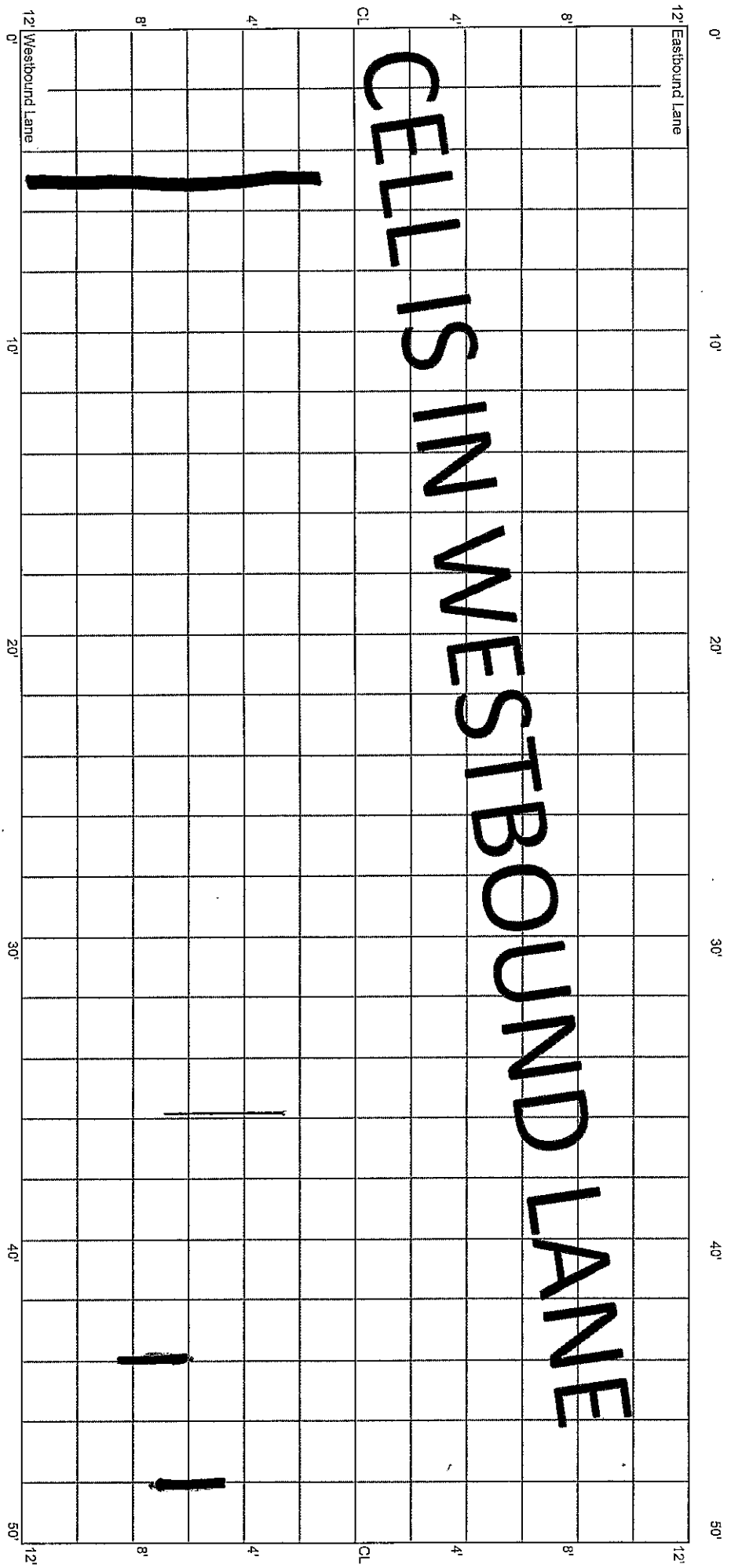
14+50



CELL 7003W
150 - 200 ft

14+50

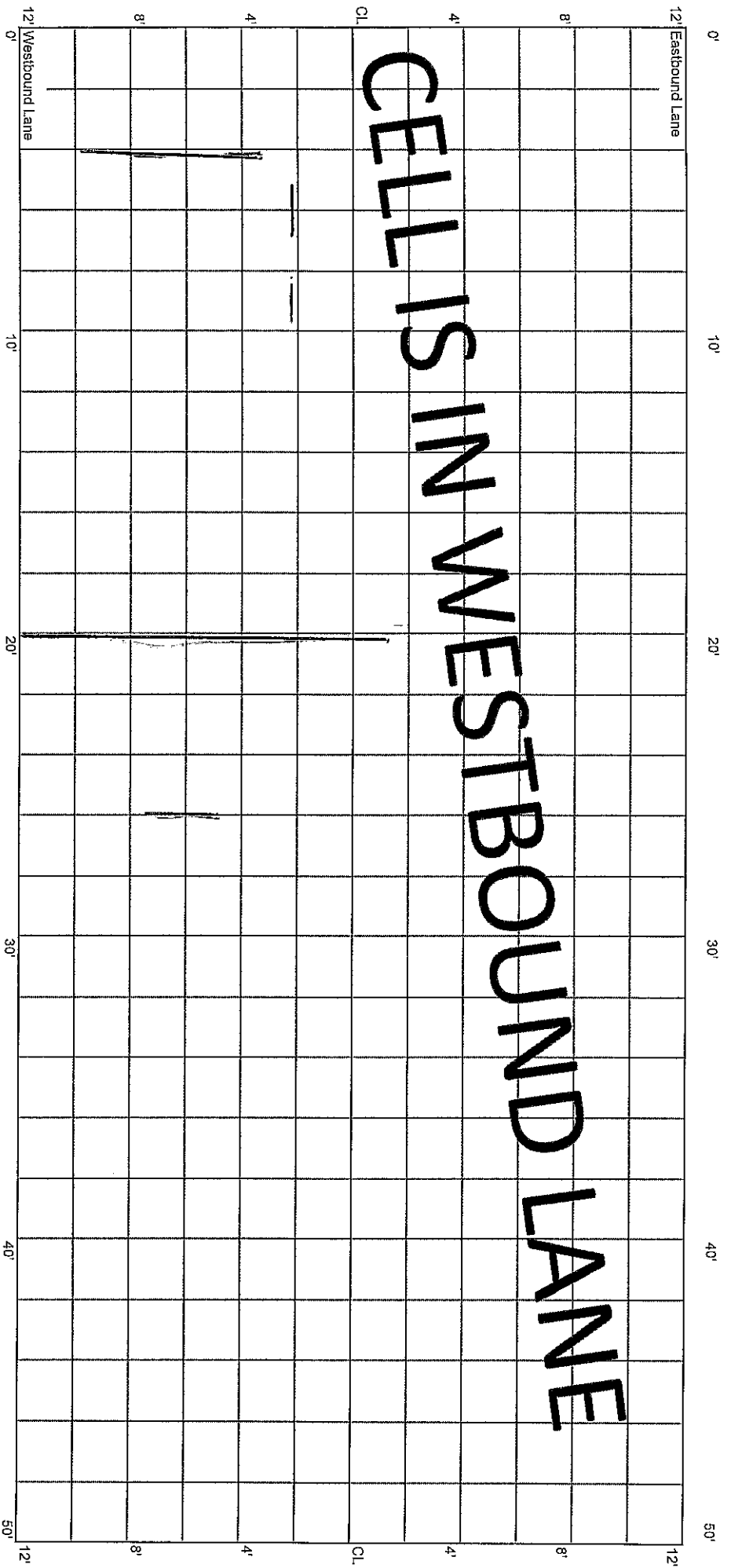
14+00



CELL 7003W
200 - 250 ft

14+00

13+50



CELL 7003W
200 - 250 ft

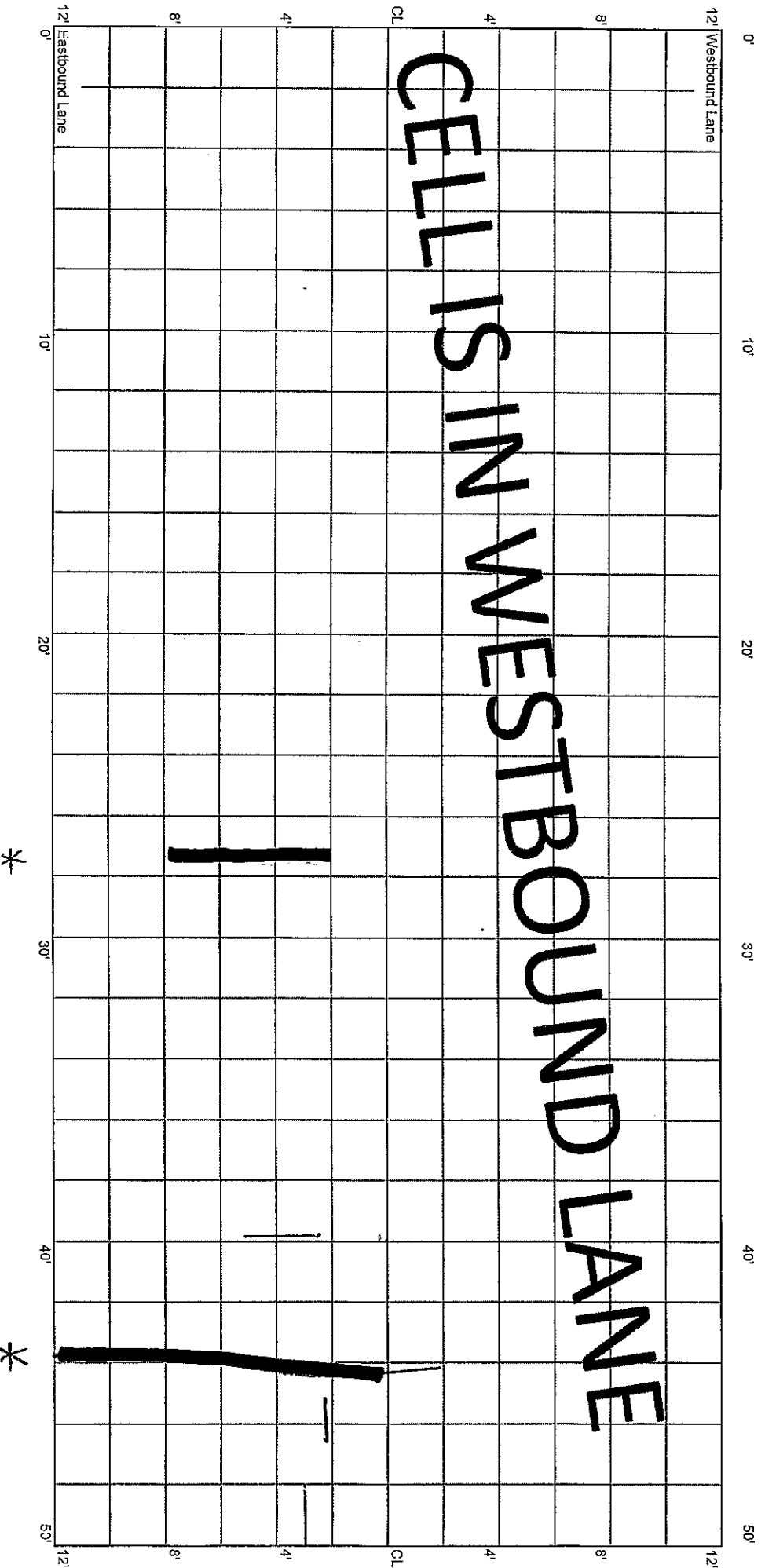
*
Sealed

*
Lost
6" seal BWP

CELL 7003W
250 - 300 ft

13+50

13+00

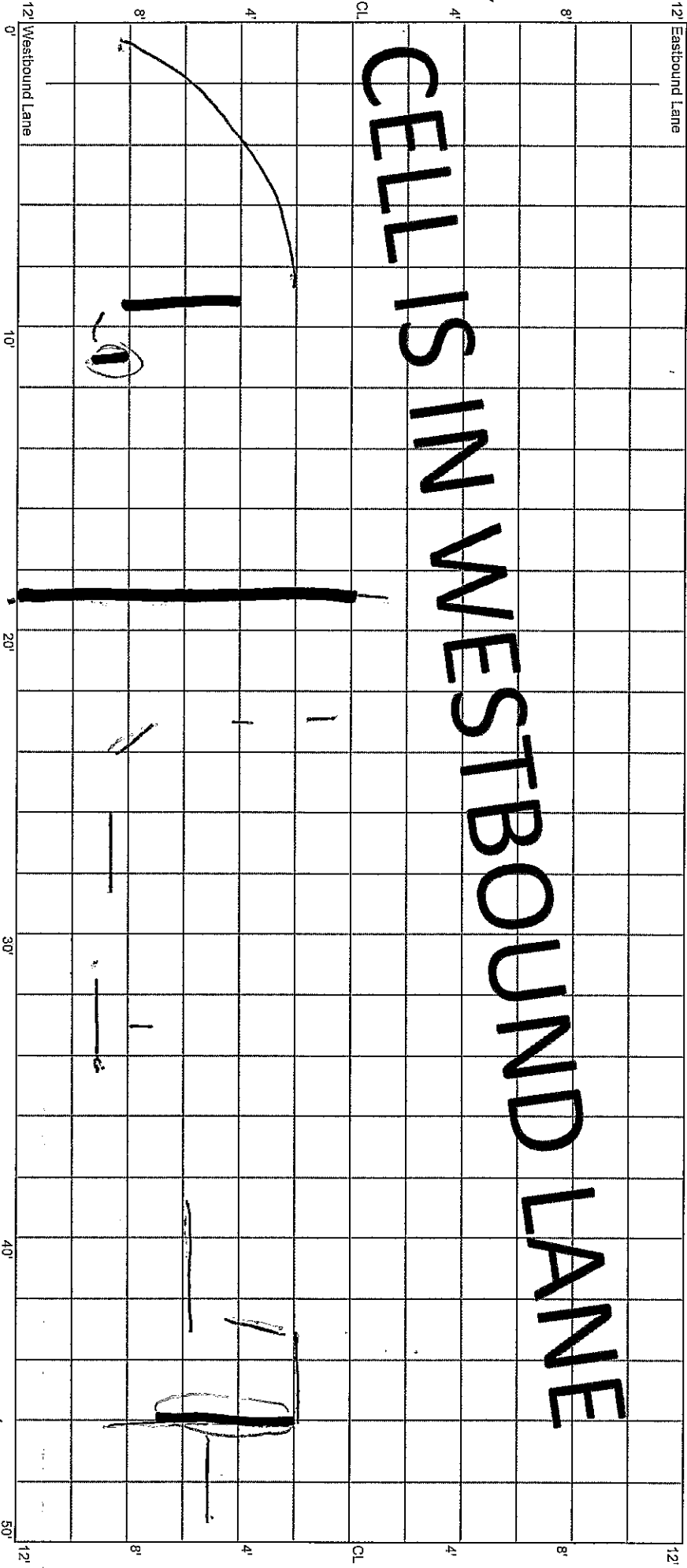


CELL 7003W
300 - 350 ft

13+00

12+50

CELLS IN WESTBOUND LANE



* N.S.

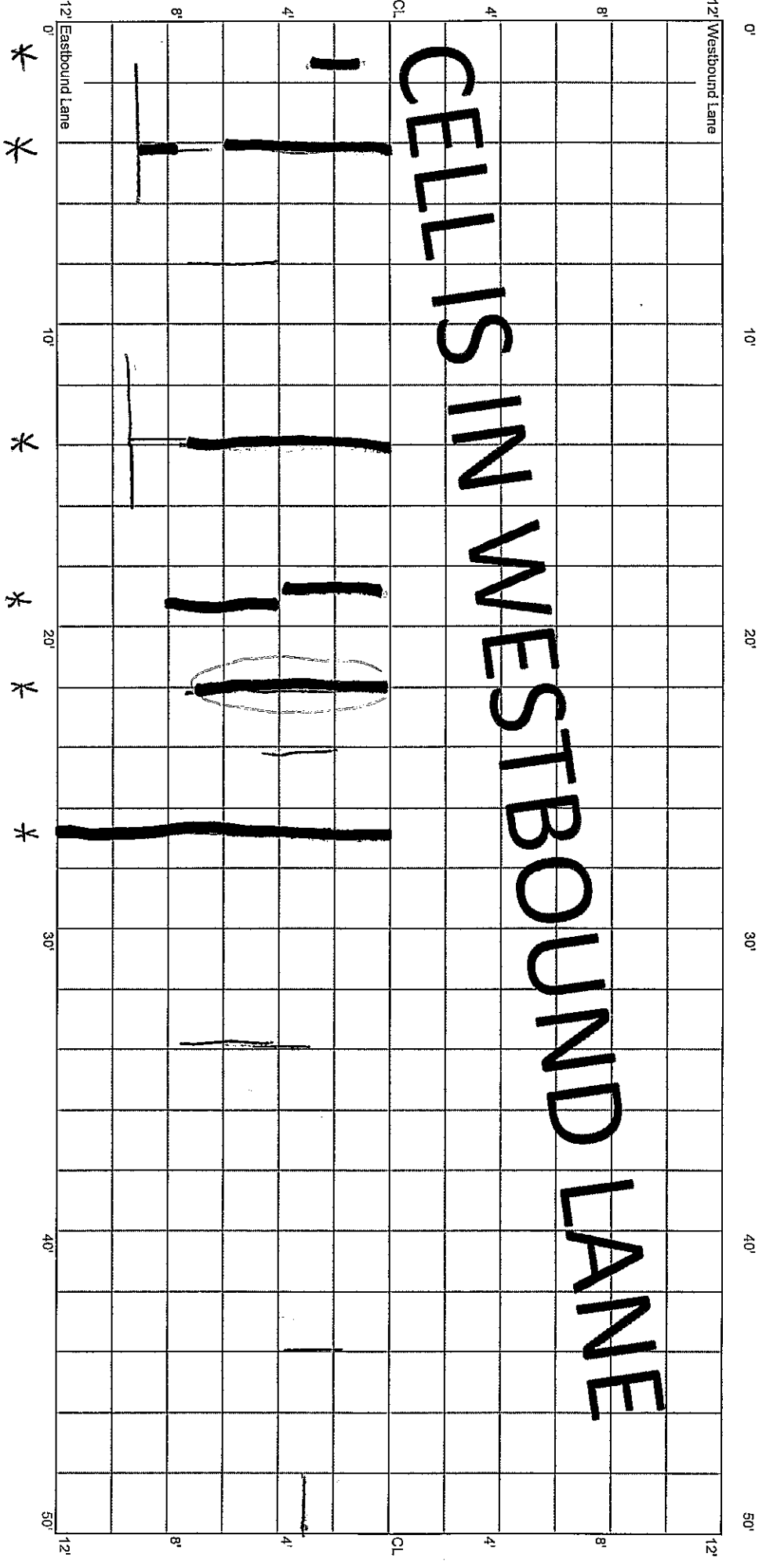
*

* N.S.

CELL 7003W
350 - 400 ft

12+50

12+00



CELLS IN WESTBOUND LANE

M.S.

lost seal
6" BWP

CELL 7003W
400 - 450 ft

12+00

11+50

12' Eastbound Lane

12' Westbound Lane

CELLS IN WESTBOUND LANE

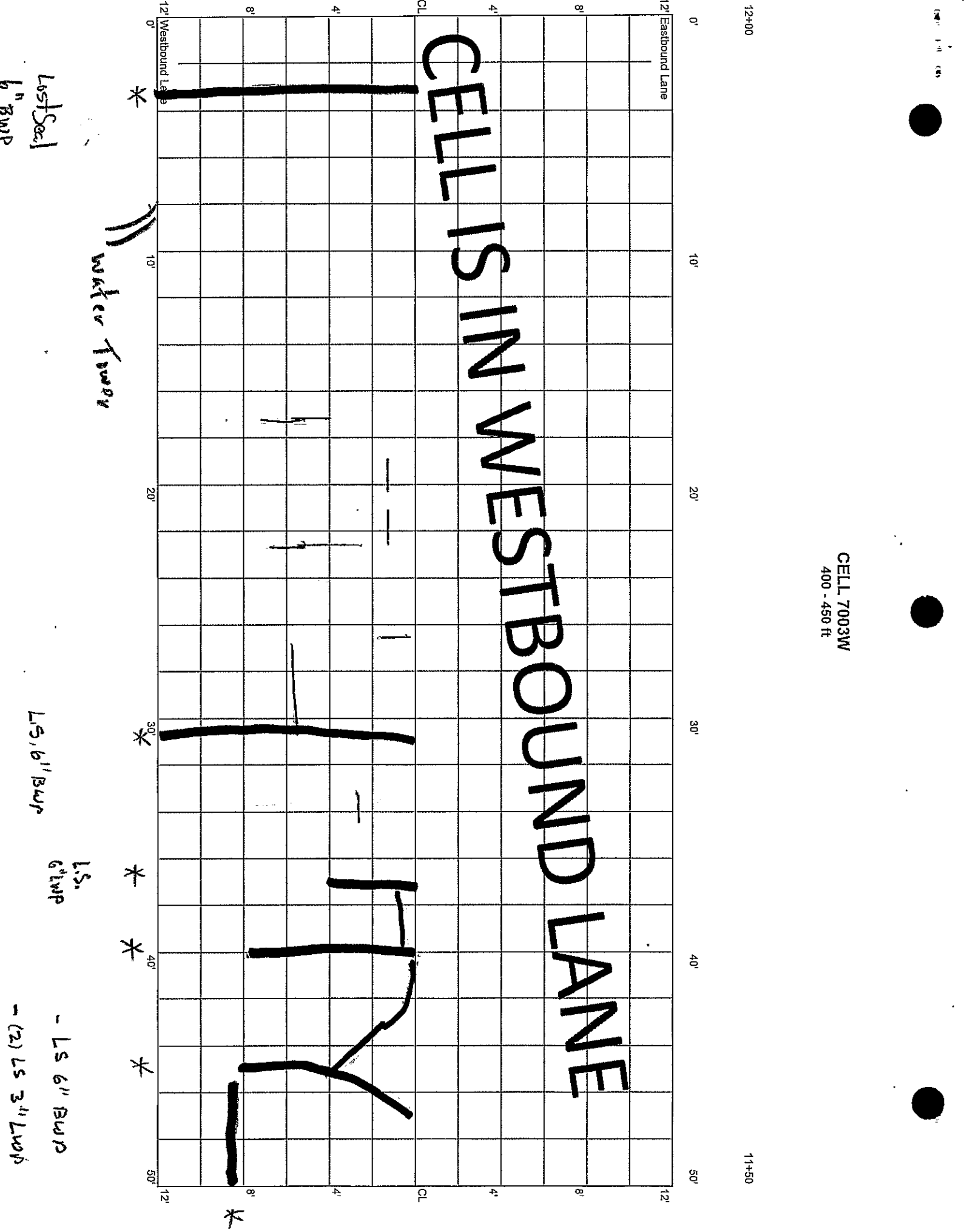
Water Tower

Lost Seal
6" BWP

LS, 6" BWP

LS,
6" BWP

- LS 6" BWP
- (2) LS 3" LWP



CELL 7003W
450 - 500 ft

11+50

11+00

12' Eastbound Lane

12'

0'

10'

20'

30'

40'

50'

CELLS IN WESTBOUND LANE

12' Westbound Lane

12'

0'

10'

20'

30'

40'

50'

HORN
ROW

N.S.

LS
12" RW P

LS
12" RW P

LONG
LS (2) X 36" RW P

LS, 6" RW P
Core hole

CELL 7003W
500 - 650 ft

11+00

10+75

10+50

