



Hwy 61 Canadian Pacific Rail Bridge Project

OVERVIEW

The Hwy 61 bridge, originally constructed in 1955, is located over the Canadian Pacific railroad near Golf Links Dr. at the southern city limits of Red Wing. The bridge is nearing the end of its service life and needs to be replaced. The new bridge will be constructed north of the existing bridge, allowing traffic to be maintained during construction.

The Mississippi River Trail runs along the shoulders of Hwy 61 in this location. The new bridge will include wider shoulders to better accommodate MRT users, as well as provide the appropriate clearance for trains using the CP rail line. MnDOT is also using this opportunity to create new left turn lanes to provide safer access at nearby intersections and commercial driveways.

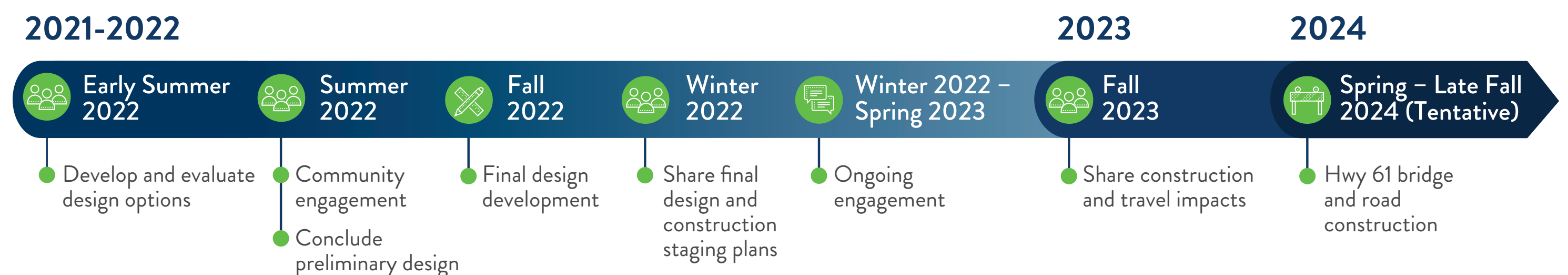
PROJECT BENEFITS

- New bridge over the CP railroad**
- Smoother ride on Hwy 61 near Golf Links Dr.**
- Improved safety and continuity along Hwy 61**
- Wider shoulders across the bridge for bicyclists using the Mississippi River Trail**
- New left turn lanes on Hwy 61 at commercial entrances and Golf Links Dr.**

PROJECT MAP



PROJECT SCHEDULE



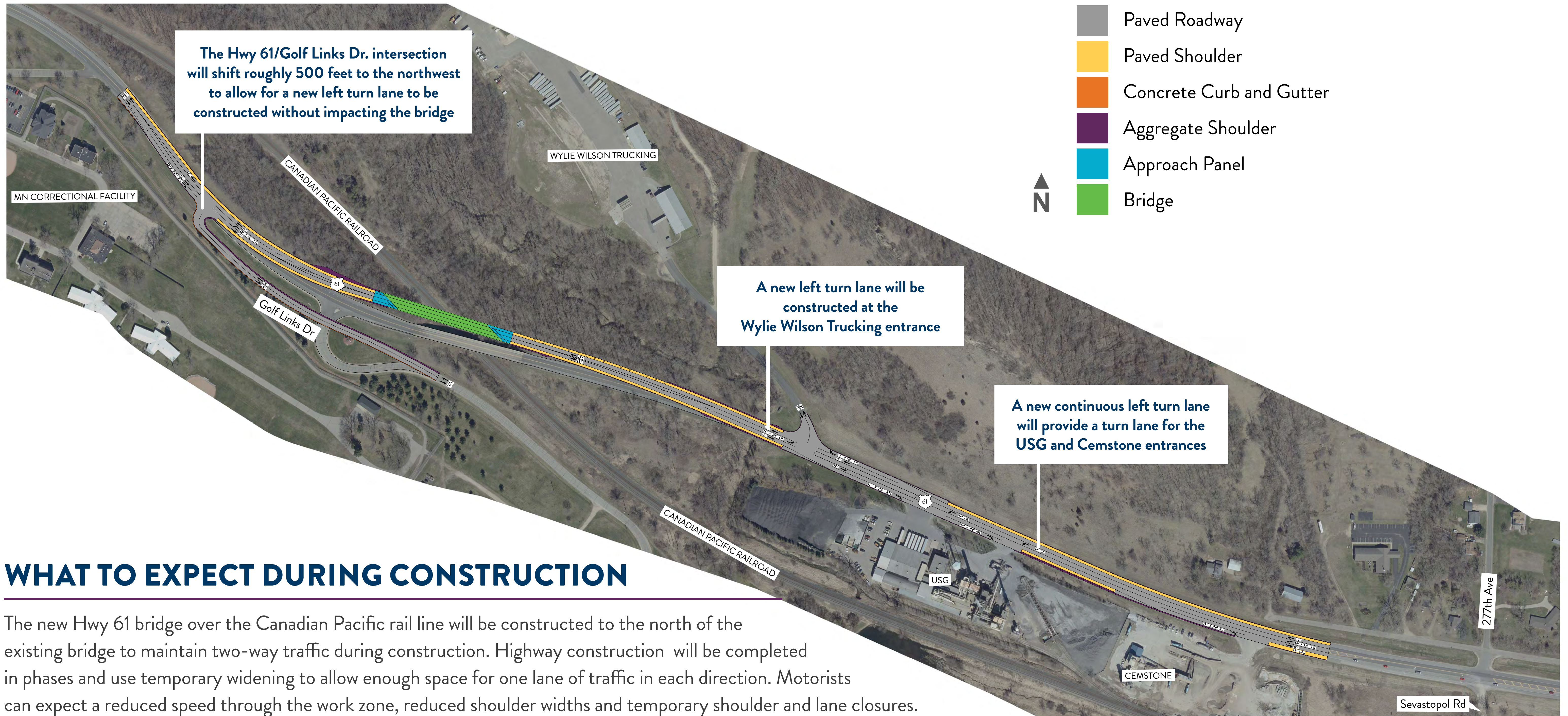
CONTACT

dot.state.mn.us/d6/projects/hwy61-bridge
 Chad Hanson, Project Manager | chad.hanson@state.mn.us | 507-286-7637





Hwy 61 Canadian Pacific Rail Bridge Project



WHAT TO EXPECT DURING CONSTRUCTION

The new Hwy 61 bridge over the Canadian Pacific rail line will be constructed to the north of the existing bridge to maintain two-way traffic during construction. Highway construction will be completed in phases and use temporary widening to allow enough space for one lane of traffic in each direction. Motorists can expect a reduced speed through the work zone, reduced shoulder widths and temporary shoulder and lane closures. The work is expected to be completed in one construction season (tentatively spring through late fall 2024).

CONTACT

- dot.state.mn.us/d6/projects/hwy61-bridge
- Chad Hanson, Project Manager | chad.hanson@state.mn.us | 507-286-7637

