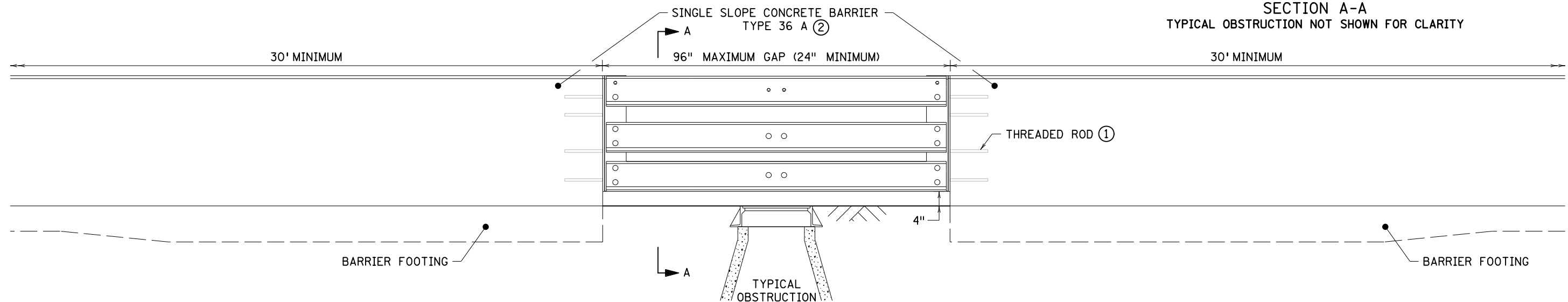


ISOMETRIC VIEW
NEAR-SIDE RAILS AND RAIL FASTENERS NOT SHOWN FOR CLARITY

SECTION A-A
TYPICAL OBSTRUCTION NOT SHOWN FOR CLARITY



PROFILE VIEW

NOTES:

RAILS ARE IDENTICAL. NOT ALL HOLES IN THE TOP RAIL ARE USED. SEE STANDARD PLATE 8320 FOR COMPONENT DETAILS.

GALVANIZE THREADED RODS, BOLTS, WASHERS, AND NUTS IN ACCORDANCE WITH SPEC. 3392.

① PROVIDE AN ADHESIVE WITH A MINIMUM CHARACTERISTIC BOND STRENGTH OF 2.1 KSI IN UNCRACKED CONCRETE AND 1.25 KSI IN CRACKED CONCRETE. ENSURE THAT THE ADHESIVE IS CONSIDERED A CATEGORY 1 CONCRETE ANCHORAGE AS DEFINED IN ACI 318 UNDER WATER-SATURATED CONCRETE CONDITIONS. EMBED THE ANCHORAGE NO LESS THAN 11" REGARDLESS OF CHARACTERISTIC BOND STRENGTH. DRILL THROUGH REINFORCEMENT (IF ENCOUNTERED) TO ACHIEVE MINIMUM EMBEDMENT. ENSURE HEX NUT IS IN CONTACT WITH THE ADJACENT SURFACE AND TORQUE TO 60 FT-LBS UNLESS A HIGHER TORQUE IS RECOMMENDED BY THE MANUFACTURER. SEE SPECIAL PROVISIONS FOR ADDITIONAL REQUIREMENTS.

② BARRIER MUST BE TYPE 36 A. SEE STANDARD PLAN 5-297.681 FOR FOOTING DETAILS.

LEAD EXPERT OFFICE
NANCY YOO
DESIGN SUPPORT DIRECTOR
OFFICE OF PROJECT MANAGEMENT & TECHNICAL SUPPORT



BARRIER GAP RAIL (BGR) SYSTEM
FOR SINGLE SLOPE CONCRETE BARRIER

APPROVED: 10-11-2023
REVISED:

THOMAS STYRBICKI
STATE DESIGN ENGINEER

STANDARD PLAN
5-297.682

1 OF 1

STANDARD PLAN

STATE PROJ. NO.
TRUNK HWY.

SHEET NO.
TOTAL SHEETS