

# FRONT ST AND S BROADWAY AVE - Intersection closures

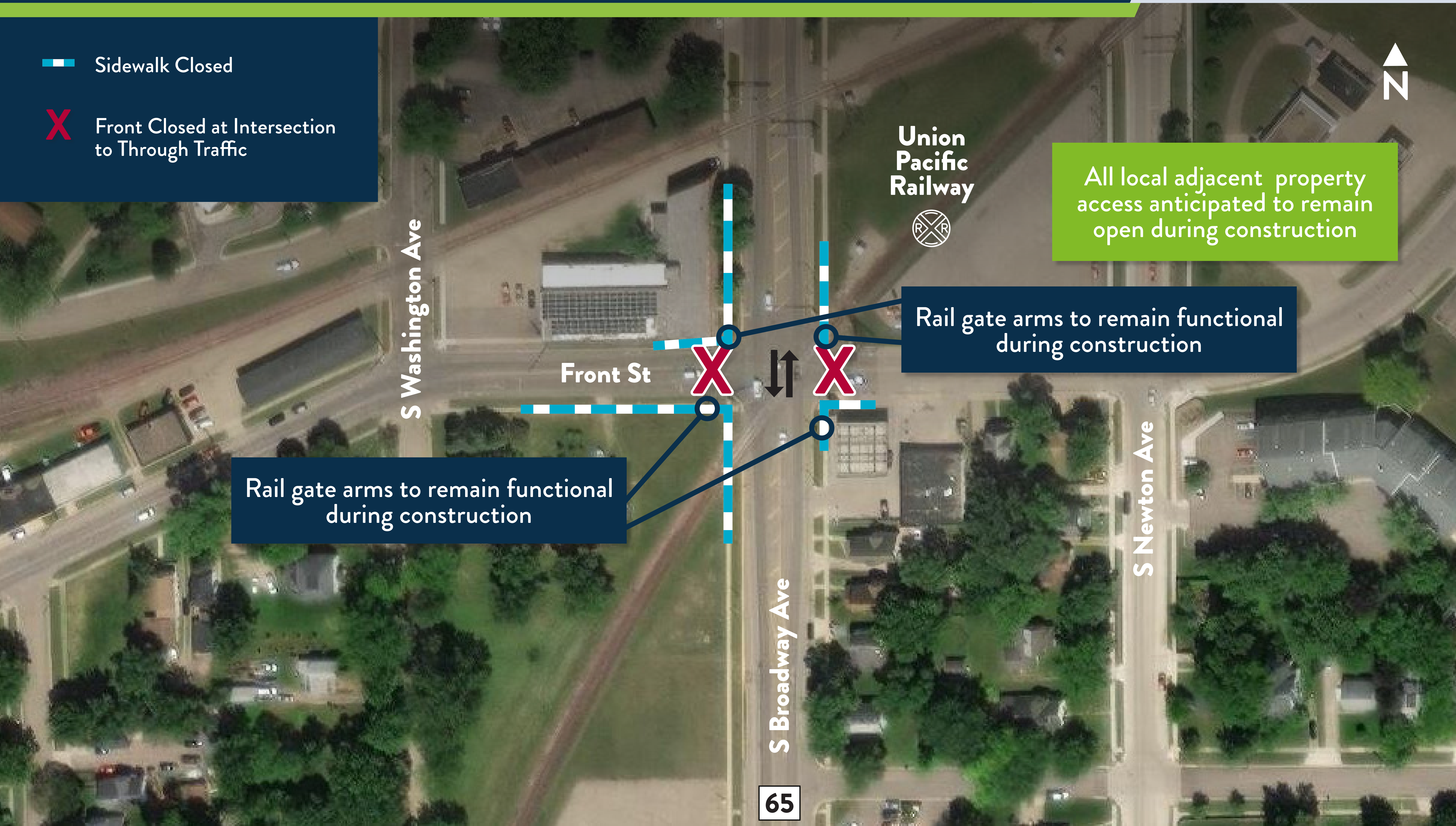
 Sidewalk Closed

 Front Closed at Intersection  
to Through Traffic

All local adjacent property  
access anticipated to remain  
open during construction

Rail gate arms to remain functional  
during construction

Rail gate arms to remain functional  
during construction



S Washington Ave

Front St

S Broadway Ave

65

Union  
Pacific  
Railway

S Newton Ave



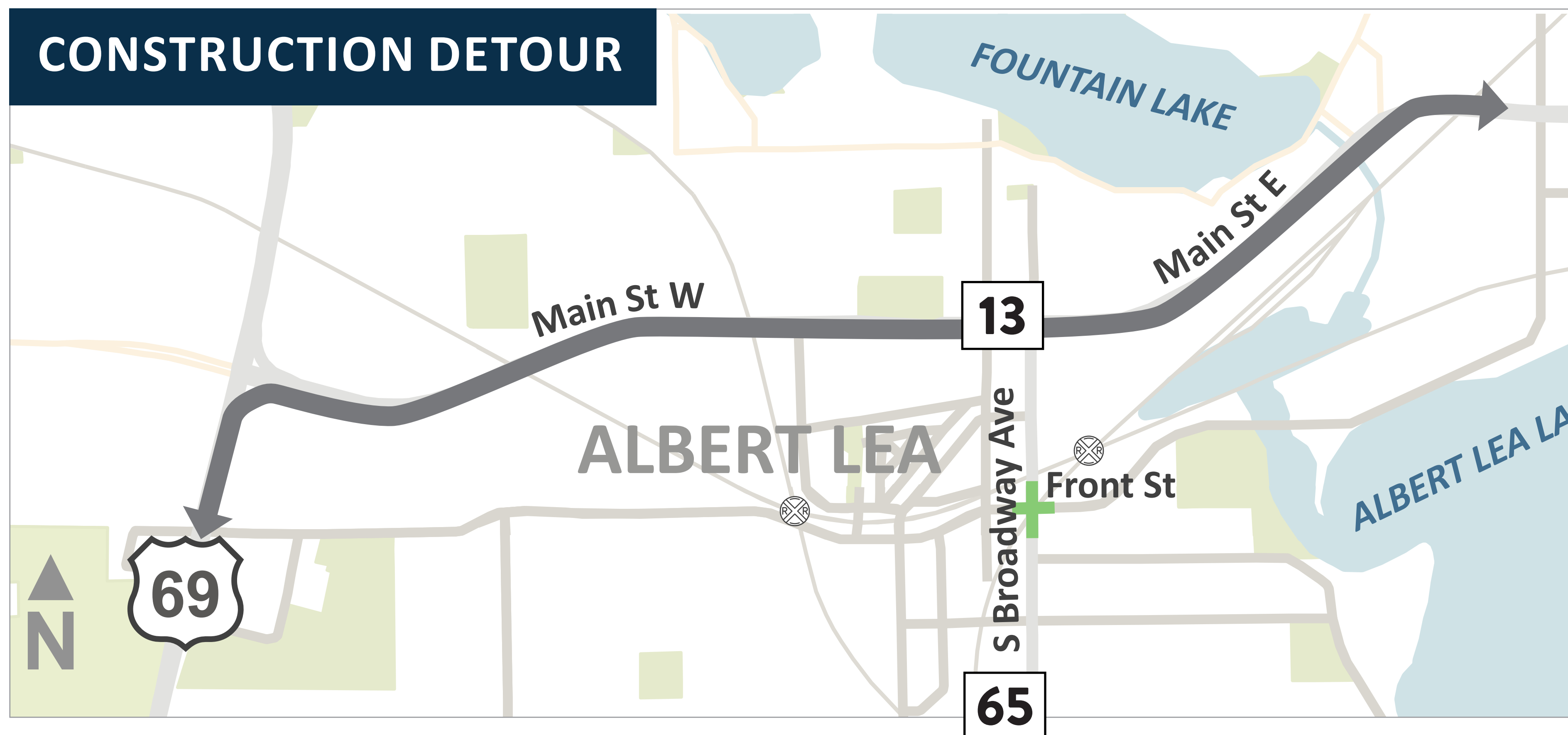
# CONSTRUCTION BEGINS MID-JUNE 2024

Intersection will be closed for approximately 1 month

## PROJECT OVERVIEW:

- Current signals are over 50 years old and need to be replaced
- Americans with Disabilities Act features need to be updated
- The intersection will function the same after construction

## CONSTRUCTION DETOUR



Get updates on your travel

Sign up for email updates on our project website for the latest information on traffic impacts and construction:



**TRAFFIC SIGNAL REPLACEMENT:**

[mndot.gov/d6/projects/traffic-signal-replacement](https://mndot.gov/d6/projects/traffic-signal-replacement)

