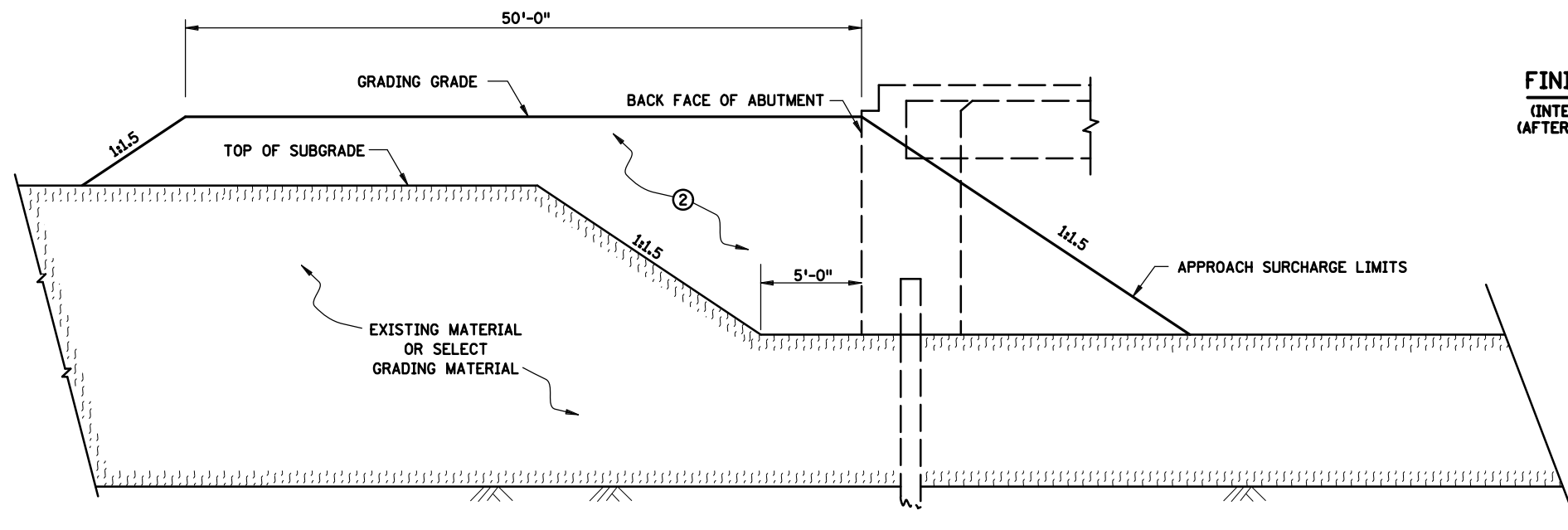


**ELEVATION
FINISHED GRADING SECTION**
(INTEGRAL ABUTMENT ON PILING SHOWN)
(AFTER ABUTMENT HAS BEEN CONSTRUCTED)

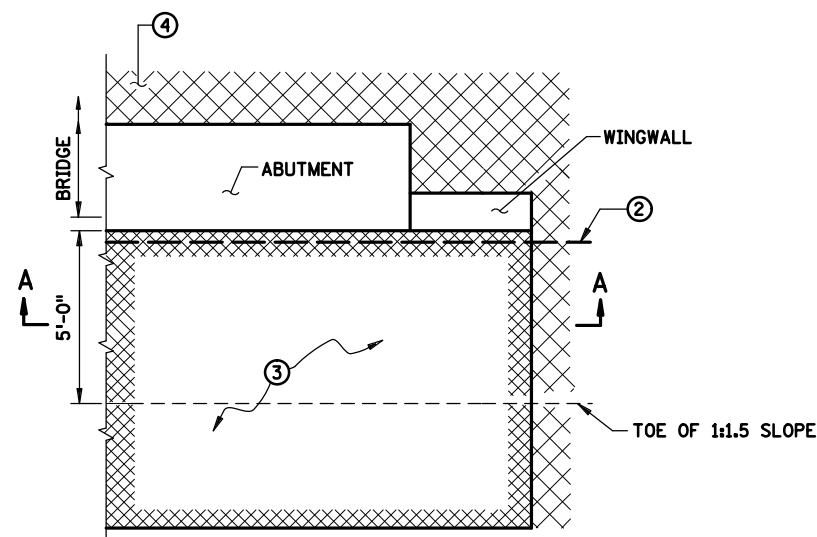


**ELEVATION
ROUGH GRADING SECTION**
(PRIOR TO ABUTMENT CONSTRUCTION)

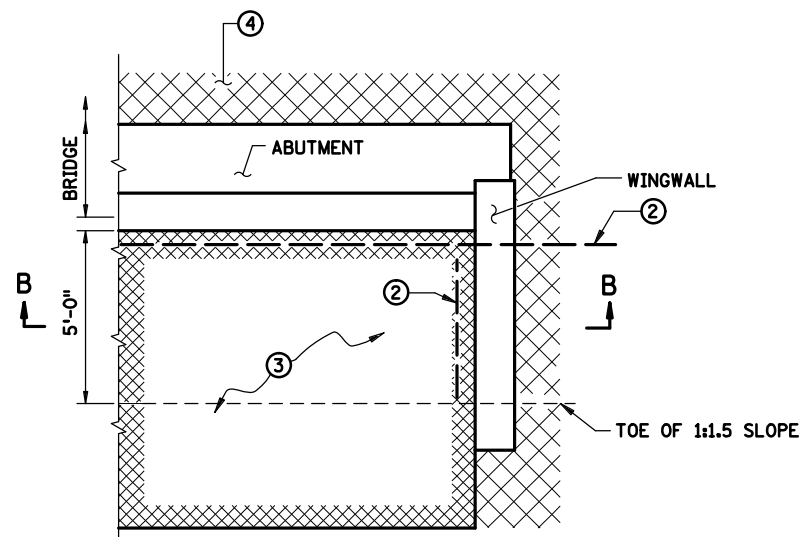
NOTES:

- ① QUANTITY OF STRUCTURAL BACKFILL (SPEC. 3149.2.D.2) IS BASED ON DIMENSIONS SHOWN, AND PAYMENT IS BASED ON THIS QUANTITY. SEE PLAN FOR QUANTITY. IF THE CONTRACTOR CHOOSES TO INCREASE DIMENSIONS IN ORDER TO FACILITATE CONSTRUCTION OPERATIONS, ANY QUANTITY INCREASES ARE CONSIDERED INCIDENTAL.
- ② PLACE ABUTMENT APPROACH SURCHARGE MATERIAL PRIOR TO ABUTMENT CONSTRUCTION. AFTER COMPLETION OF SURCHARGE WAITING PERIOD, REMOVE SURCHARGE AND EXISTING MATERIAL OR SELECT GRADING MATERIAL TO THE LIMITS SHOWN IN "ROUGH GRADING SECTION" ABOVE, PRIOR TO ABUTMENT CONSTRUCTION. SEE BRIDGE PLANS AND SPECIAL PROVISIONS FOR ABUTMENT APPROACH SURCHARGE REQUIREMENT AND PAYMENTS.
- ③ SEE BRIDGE PLAN FOR SLOPE AND SLOPE PROTECTION.
- ④ SEE PLAN FOR TYPE OF MATERIAL.
- ⑤ START 1:20 TAPER AT END OF APPROACH PANEL. 1:20 VARIES WHEN APPROACH PANEL IS SKEWED.
- ⑥ GRADING TO BE SQUARED OFF ON SKEWED BRIDGES.
- ⑦ TOP OF 1:1.5 SLOPE (FORMS A LINE PARALLEL TO END OF BRIDGE).
- ⑧ SUBSURFACE PIPE DRAIN. SEE BRIDGE PLAN FOR STANDARD DETAIL B910 FOR DETAILS.
- ⑨ PLACE 12 MIL POLYETHYLENE SHEETING (OR TWO LAYERS OF 6 MIL) UNDER THE LIMITS OF THE APPROACH PANEL TO ALLOW THE PANEL TO MOVE LONGITUDINALLY ON THE GRADE. SHEETING IS INCIDENTAL.

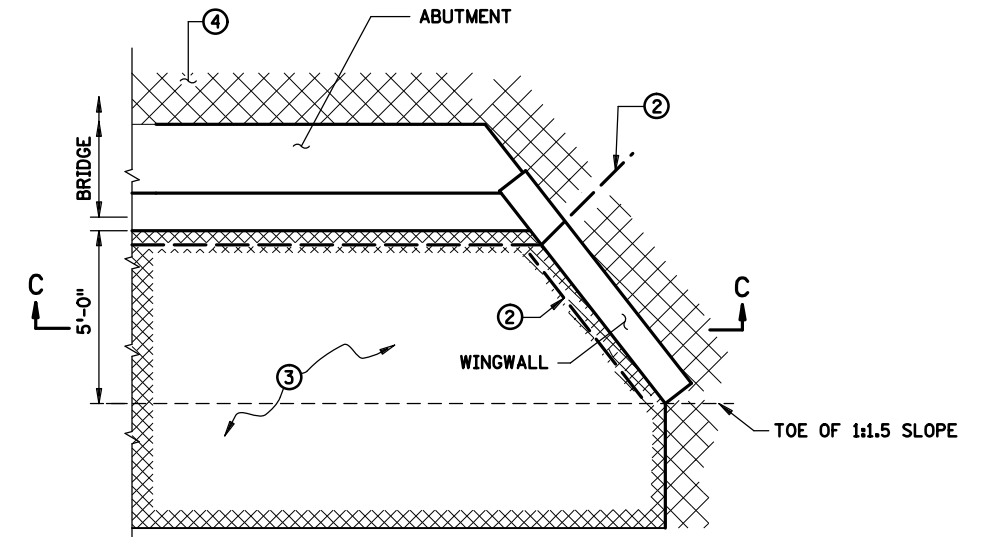
LEAD EXPERT OFFICE	GLENN ENGSTROM DIRECTOR OFFICE OF MATERIALS & ROAD RESEARCH	BRIDGE ABUTMENT APPROACH TREATMENT FOR INTEGRAL ABUTMENTS			APPROVED: 08-22-2019	<i>Peter A. Harff</i> PETER A. HARFF STATE DESIGN ENGINEER	STANDARD PLAN	1 OF 2
					REVISED:		5-297.234	
		STANDARD PLAN			STATE PROJ. NO.	SHEET NO.		
					TRUNK HWY.	TOTAL SHEETS		



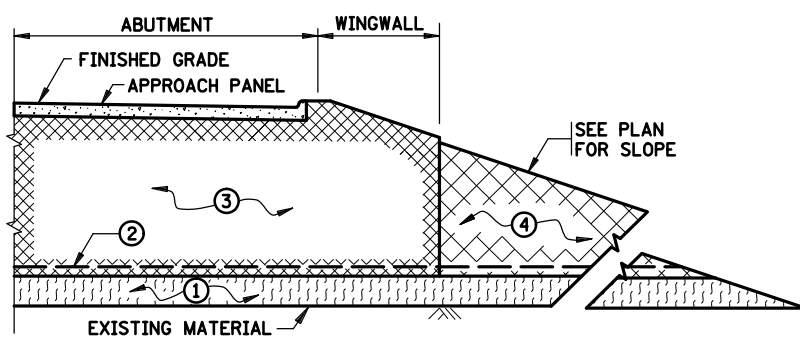
PARTIAL PLAN VIEW AT ABUTMENT
(WINGWALL AT 180°) (FINISHED GRADING)



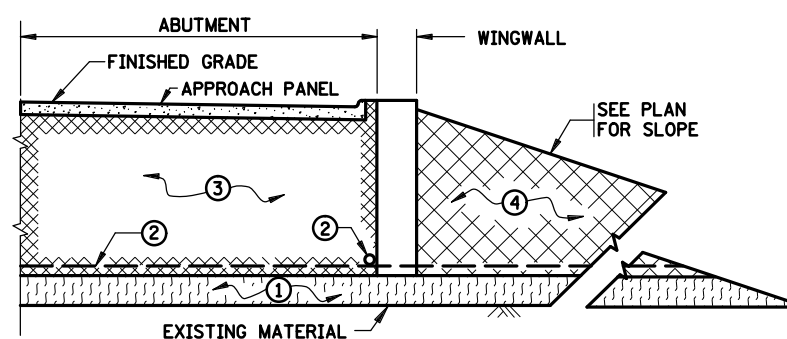
PARTIAL PLAN VIEW AT ABUTMENT
(WINGWALL AT 90°) (FINISHED GRADING)



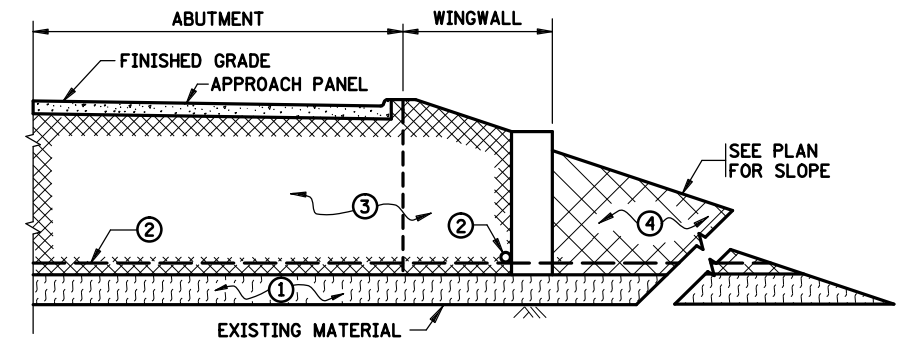
PARTIAL PLAN VIEW AT ABUTMENT
(WINGWALL AT ANY OTHER ANGLE) (FINISHED GRADING)



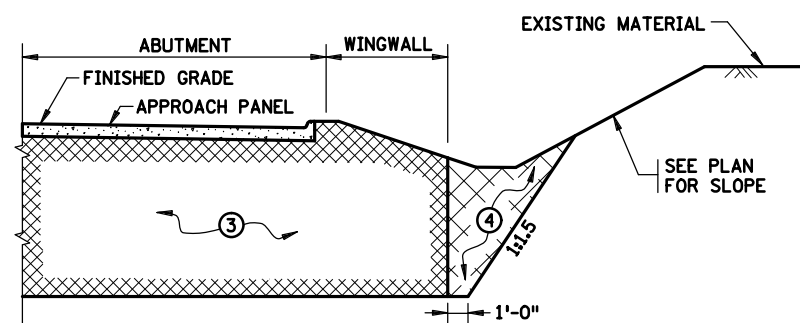
FINISHED GRADING SECTION A-A
(FILL SECTION)



FINISHED GRADING SECTION B-B
(FILL SECTION)



FINISHED GRADING SECTION C-C
(FILL SECTION)



FINISHED GRADING SECTION A-A
(CUT SECTION)
(BRIDGE DETAIL B910 DRAIN NOT SHOWN)

NOTES:

- ① EXISTING MATERIAL OR SELECT GRADING MATERIAL (SPEC. 2106).
- ② SUBSURFACE PIPE DRAIN. SEE BRIDGE PLAN FOR STANDARD DETAIL B910 FOR DETAILS.
- ③ QUANTITY OF STRUCTURAL BACKFILL (SPEC. 3149.2.D.2) IS BASED ON DIMENSIONS SHOWN, AND PAYMENT IS BASED ON THIS QUANTITY. SEE PLAN FOR QUANTITY. IF THE CONTRACTOR CHOOSES TO INCREASE DIMENSIONS IN ORDER TO FACILITATE CONSTRUCTION OPERATIONS, ANY QUANTITY INCREASES ARE CONSIDERED INCIDENTAL.
- ④ SELECT GRADING MATERIAL (SPEC. 2106).

LEAD EXPERT OFFICE	GLENN ENGSTROM DIRECTOR OFFICE OF MATERIALS & ROAD RESEARCH	BRIDGE ABUTMENT APPROACH TREATMENT FOR INTEGRAL ABUTMENTS	APPROVED: 08-22-2019 REVISED:	<i>Peter A. Harff</i> PETER A. HARFF STATE DESIGN ENGINEER	STANDARD PLAN	2 OF 2
					5-297.234	
		STANDARD PLAN		STATE PROJ. NO.	SHEET NO.	
				TRUNK HWY.	TOTAL SHEETS	