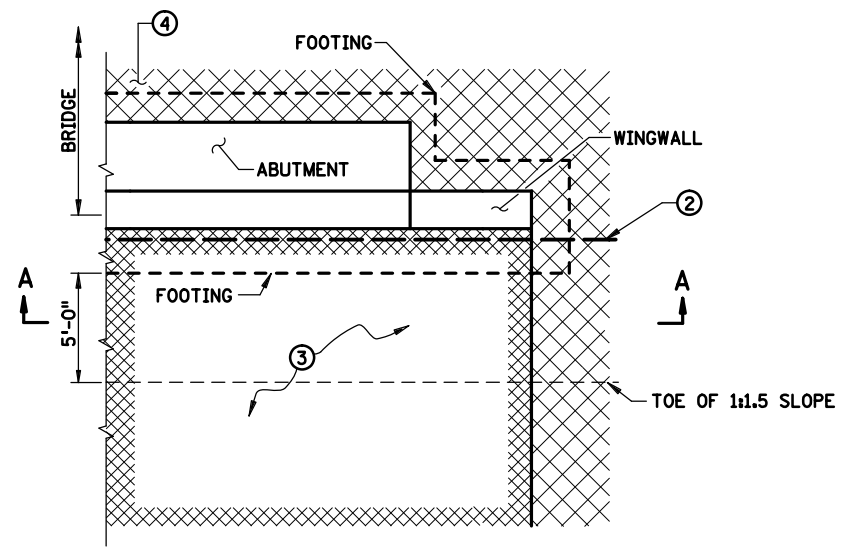


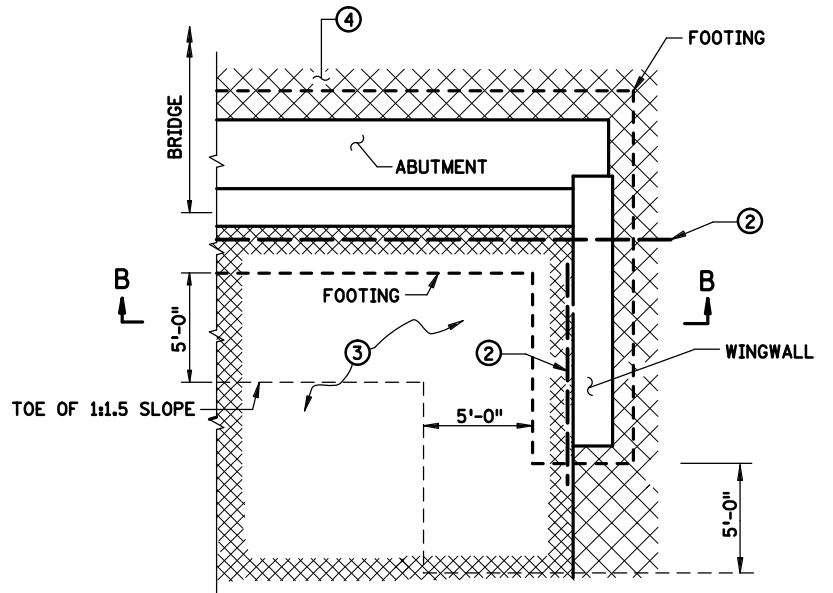
NOTES:

- ① QUANTITY OF STRUCTURAL BACKFILL (SPEC. 3149.2.D.2) IS BASED ON DIMENSIONS SHOWN, AND PAYMENT IS BASED ON THIS QUANTITY. SEE PLAN FOR QUANTITY. IF THE CONTRACTOR CHOOSES TO INCREASE DIMENSIONS IN ORDER TO FACILITATE CONSTRUCTION OPERATIONS, ANY QUANTITY INCREASES ARE CONSIDERED INCIDENTAL.
- ② PLACE ABUTMENT APPROACH SURCHARGE MATERIAL PRIOR TO ABUTMENT CONSTRUCTION. AFTER COMPLETION OF SURCHARGE WAITING PERIOD, REMOVE SURCHARGE AND EXISTING MATERIAL OR SELECT GRADING MATERIAL TO THE LIMITS SHOWN IN "ROUGH GRADING SECTION" ABOVE, PRIOR TO ABUTMENT CONSTRUCTION. SEE BRIDGE PLANS AND SPECIAL PROVISIONS FOR ABUTMENT APPROACH SURCHARGE REQUIREMENT AND PAYMENTS.
- ③ SEE BRIDGE PLAN FOR SLOPE AND SLOPE PROTECTION.
- ④ SEE PLAN FOR TYPE OF MATERIAL.
- ⑤ GRADING TO BE SQUARED OFF ON SKEWED BRIDGES.
- ⑥ TOP OF 1:1.5 SLOPE (FORMS A LINE PARALLEL TO END OF BRIDGE).
- ⑦ SUBSURFACE PIPE DRAIN. FURNISH AND INSTALL AT TOP OF BRIDGE FOOTING IF BRIDGE DETAIL B910 IS INCLUDED ON BRIDGE PLAN.
- ⑧ IF THE APPROACH PANEL IS TIED TO THE ABUTMENT WITH REINFORCEMENT BARS, PLACE 12 MIL POLYETHYLENE SHEETING (OR TWO LAYERS OF 6 MIL) UNDER THE LIMITS OF THE APPROACH PANEL TO ALLOW THE PANEL TO MOVE LONGITUDINALLY ON THE GRADE. SHEETING IS INCIDENTAL.
- ⑨ SELECT GRADING MATERIAL (SPEC. 2106) SHALL BE COMPACTED AND MEET THE MOISTURE REQUIREMENTS OF 2106. STRUCTURAL BACKFILL (SPEC. 3149.2.D.2) MAY BE USED IN LIEU OF SELECT GRADING MATERIAL PER SPEC. 2106.
- ⑩ FOR BRIDGES WITHOUT PILING, REFER TO BRIDGE PLANS FOR MATERIAL REQUIREMENTS BELOW ABUTMENT FOOTING.

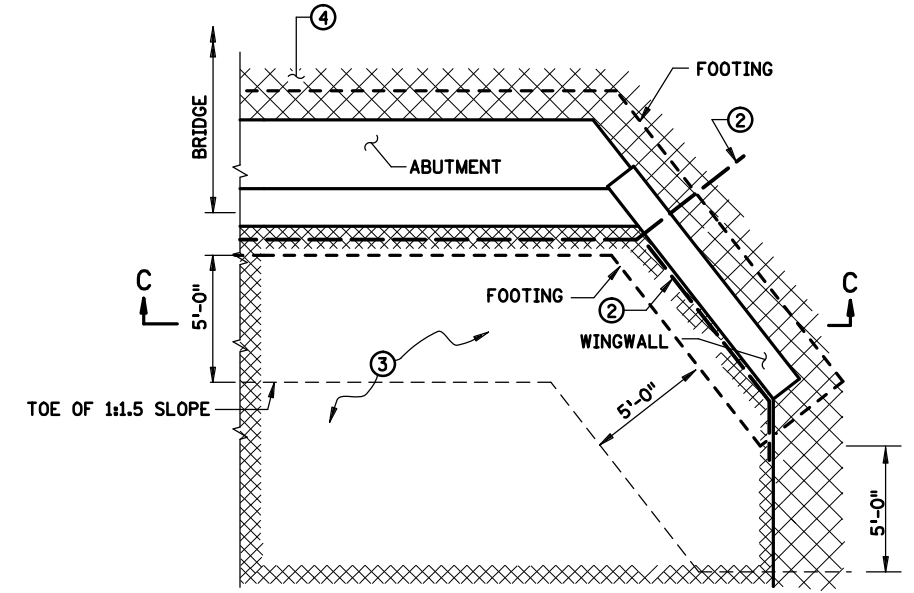
LEAD EXPERT OFFICE	GLENN ENGSTROM DIRECTOR OFFICE OF MATERIALS & ROAD RESEARCH	BRIDGE ABUTMENT APPROACH TREATMENT FOR PARAPET OR SEMI-INTEGRAL ABUTMENT ON FOOTING	APPROVED: 08-22-2019	Peter A Harff PETER A. HARFF STATE DESIGN ENGINEER	STANDARD PLAN	1 OF 2
			REVISED:		5-297.233	
		STANDARD PLAN		STATE PROJ. NO.	SHEET NO.	
				TRUNK HWY.	TOTAL SHEETS	



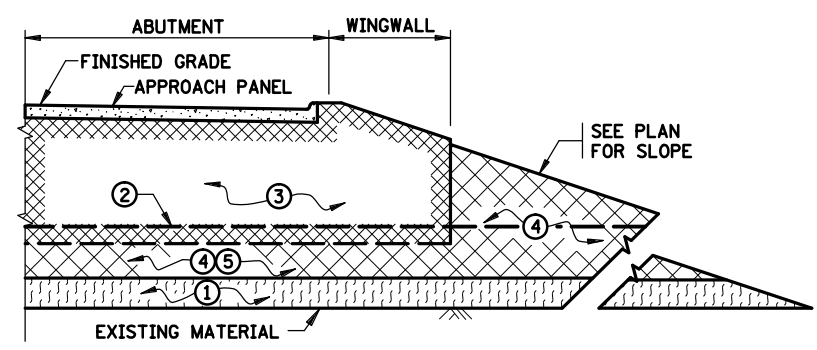
PARTIAL PLAN VIEW AT ABUTMENT
(WINGWALL AT 180°) (FINISHED GRADING)



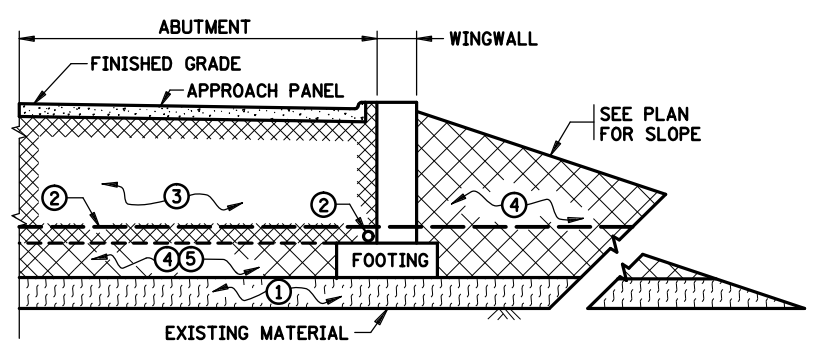
PARTIAL PLAN VIEW AT ABUTMENT
(WINGWALL AT 90°) (FINISHED GRADING)



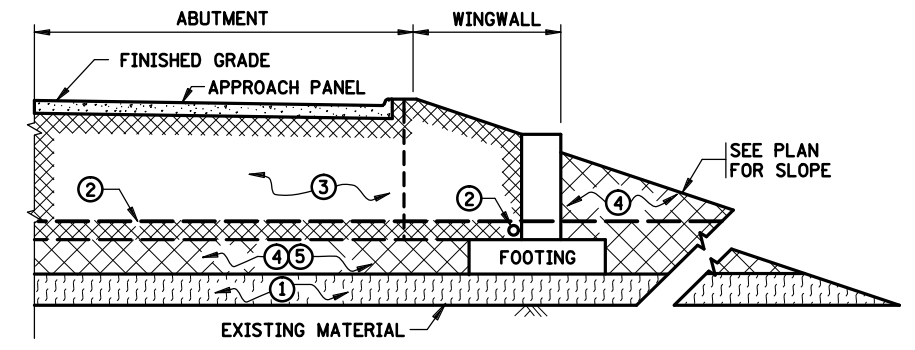
PARTIAL PLAN VIEW AT ABUTMENT
(WINGWALL AT ANY OTHER ANGLE) (FINISHED GRADING)



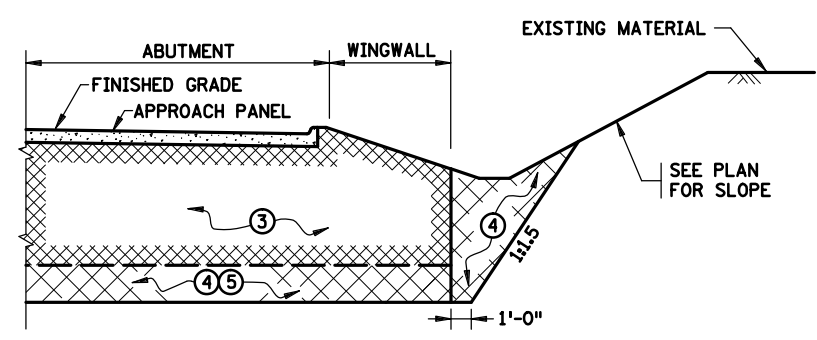
FINISHED GRADING SECTION A-A
(FILL SECTION)



FINISHED GRADING SECTION B-B
(FILL SECTION)





FINISHED GRADING SECTION C-C
(FILL SECTION)



FINISHED GRADING SECTION A-A
(CUT SECTION)
(BRIDGE DETAIL B910 DRAIN NOT SHOWN)

NOTES:

- ① EXISTING MATERIAL OR SELECT GRADING MATERIAL (SPEC. 2106).
- ② SUBSURFACE PIPE DRAIN, FURNISH AND INSTALL AT TOP OF BRIDGE FOOTING IF BRIDGE DETAIL B910 IS INCLUDED ON BRIDGE PLAN.
- ③ QUANTITY OF STRUCTURAL BACKFILL (SPEC. 3149.2.D.2) IS BASED ON DIMENSIONS SHOWN, AND PAYMENT IS BASED ON THIS QUANTITY. SEE PLAN FOR QUANTITY. IF THE CONTRACTOR CHOOSES TO INCREASE DIMENSIONS IN ORDER TO FACILITATE CONSTRUCTION OPERATIONS, ANY QUANTITY INCREASES ARE CONSIDERED INCIDENTAL.
- ④ SELECT GRADING MATERIAL (SPEC. 2106).
- ⑤ MATERIAL SHALL MEET THE COMPACTION AND MOISTURE CONTENT REQUIRMENTS OF SPEC. 2106. STRUCTURAL BACKFILL (SPEC. 3149.2.D.2) MAY BE USED IN LIEU OF SELECT GRADING MATERIAL (SPEC. 2106).

LEAD EXPERT OFFICE	GLENN ENGSTROM DIRECTOR OFFICE OF MATERIALS & ROAD RESEARCH		BRIDGE ABUTMENT APPROACH TREATMENT FOR PARAPET OR SEMI-INTEGRAL ABUTMENT ON FOOTING	APPROVED: 08-22-2019 REVISED:	 PETER A. HARFF STATE DESIGN ENGINEER	STANDARD PLAN	2 OF 2
						5-297.233	
			STANDARD PLAN			STATE PROJ. NO.	SHEET NO.
						TRUNK HWY.	TOTAL SHEETS