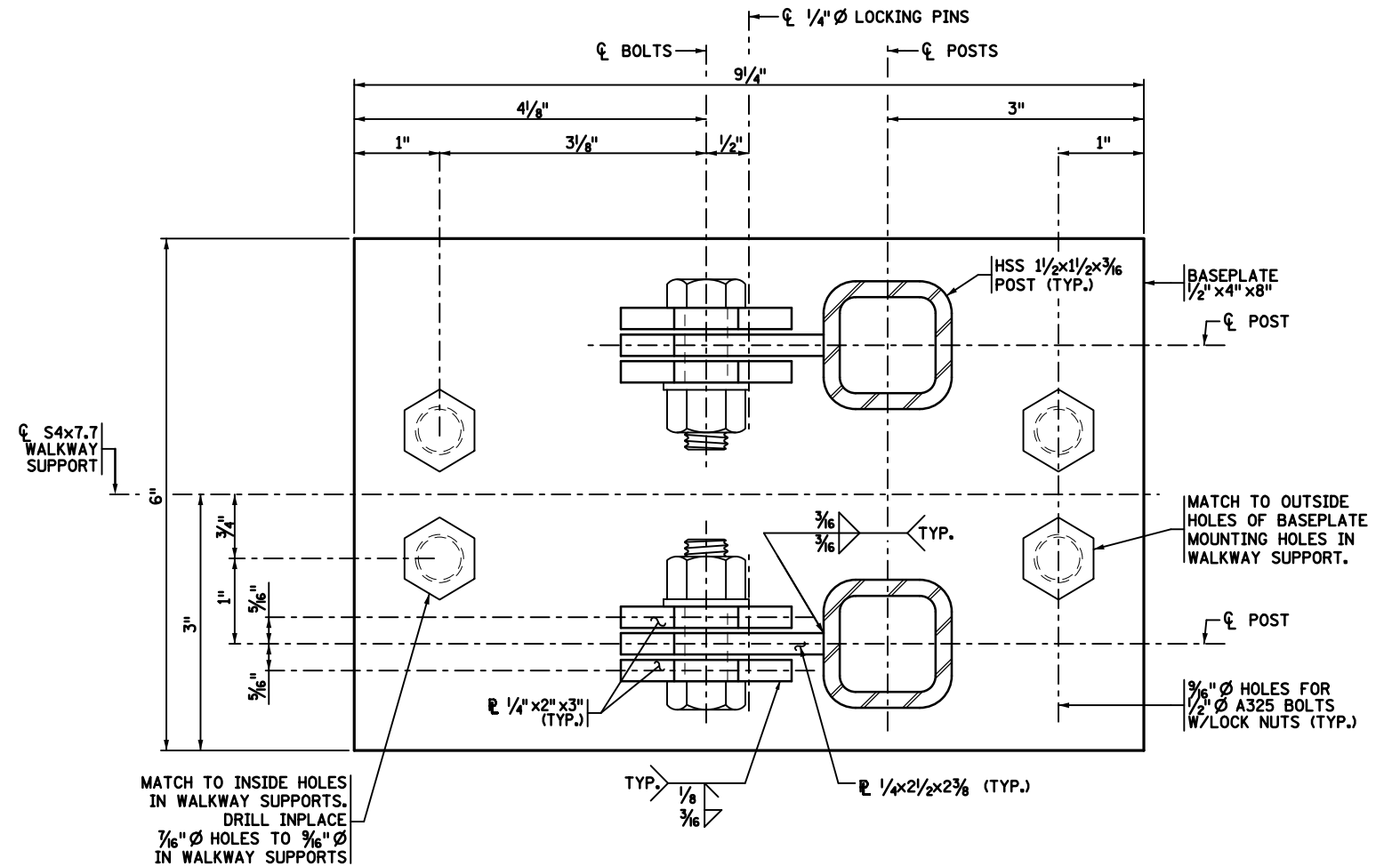
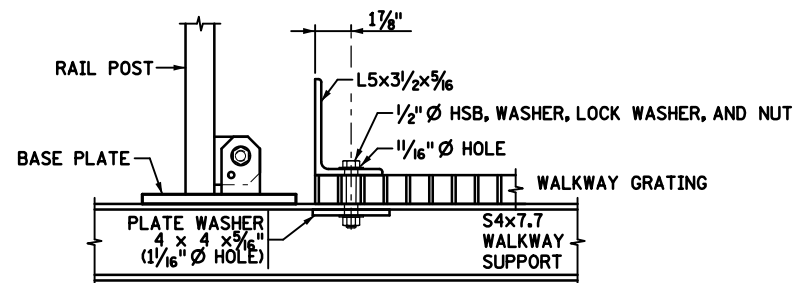
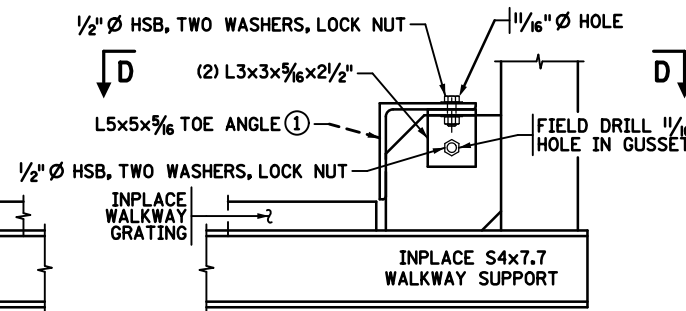
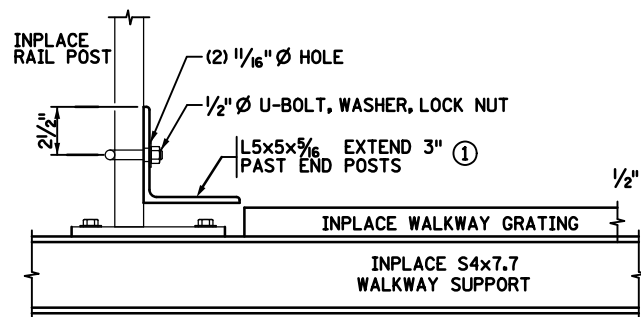
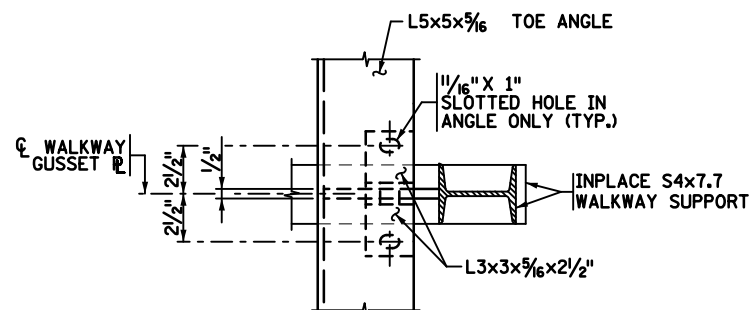


NOTE: UPGRADING OF RAIL SECTIONS TO SQUARE TUBING STYLE AND BREAKING LONG RAIL SECTIONS INTO SHORTER RAIL SECTIONS WILL REQUIRE REPLACEMENT OF RAILING MOUNTING BASE PLATE



**BASEPLATE & HINGE ASSEMBLY FOR FOLDING  
HANDRAIL AT WIDENED WALKWAY LOCATIONS**

**GENERAL NOTES:**

IT IS THE CONTRACTOR'S RESPONSIBILITY TO MEASURE AND VERIFY THE INDIVIDUAL RAIL, TOE ANGLE AND CURB ANGLE LENGTHS REQUIRED AT EACH SITE FOR INPLACE STRUCTURES PRIOR TO MANUFACTURE.

REAM FURNISHED AND INSTALLED RAILING SUPPORT BOLT AND LOCKING PIN HOLES AFTER GALVANIZING TO ENSURE BOLT AND PIN FIT. VERIFY FIT AND REAM AS NECESSARY IN FIELD. ALL RAILING SUPPORT BOLT AND LOCKING PIN HOLES ON INPLACE RAILING TO REMAIN TO ENSURE BOLT AND PIN FIT.

VERIFY, FABRICATE AND PLACE AS NECESSARY 3/4" Ø DROP-FORGED SHOULDER EYE BOLT W/LOCK WASHER & HEX NUT AT SIGN TRUSS LOCATIONS (HARNES TIE OFF POINT).

**NOTES:**

① END OF RAILING SHALL BE AT LEAST 4" FROM THE END OF THE DMS SIDE DOOR, BUT NO MORE THAN 6".

LEAD EXPERT OFFICE  
KEVIN WESTERN  
STATE BRIDGE ENGINEER



STANDARD OVERHEAD SIGN STRUCTURES - DESIGN D  
WALKWAY AND RAILING RETROFIT DETAILS

APPROVED: 05-01-2019  
REVISED:

THOMAS STYRBICKI  
STATE DESIGN ENGINEER

STANDARD PLAN  
5-297.770

1 OF 1

STANDARD PLAN

STATE PROJ. NO.  
TRUNK HWY.

SHEET NO.  
TOTAL SHEETS