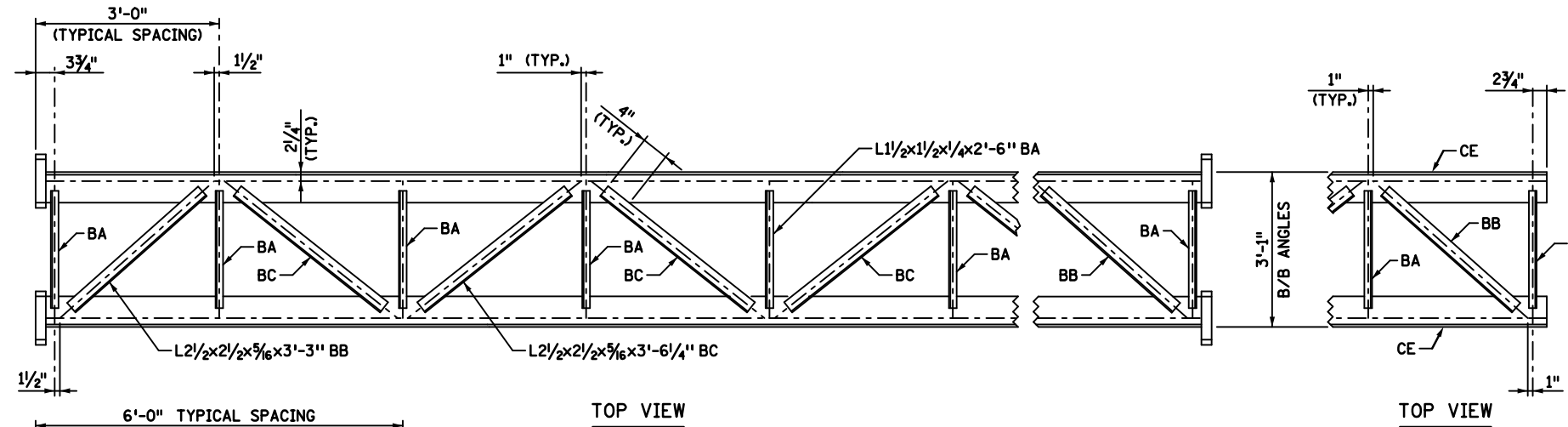
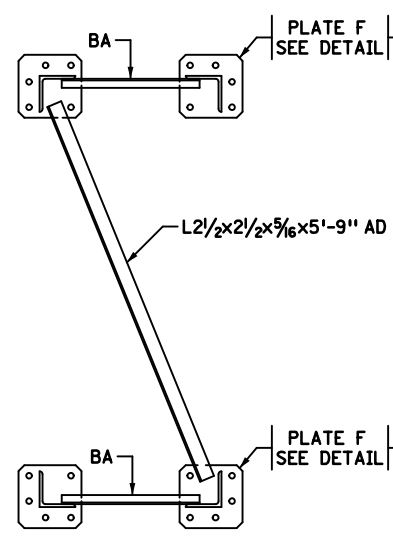


PLATE F

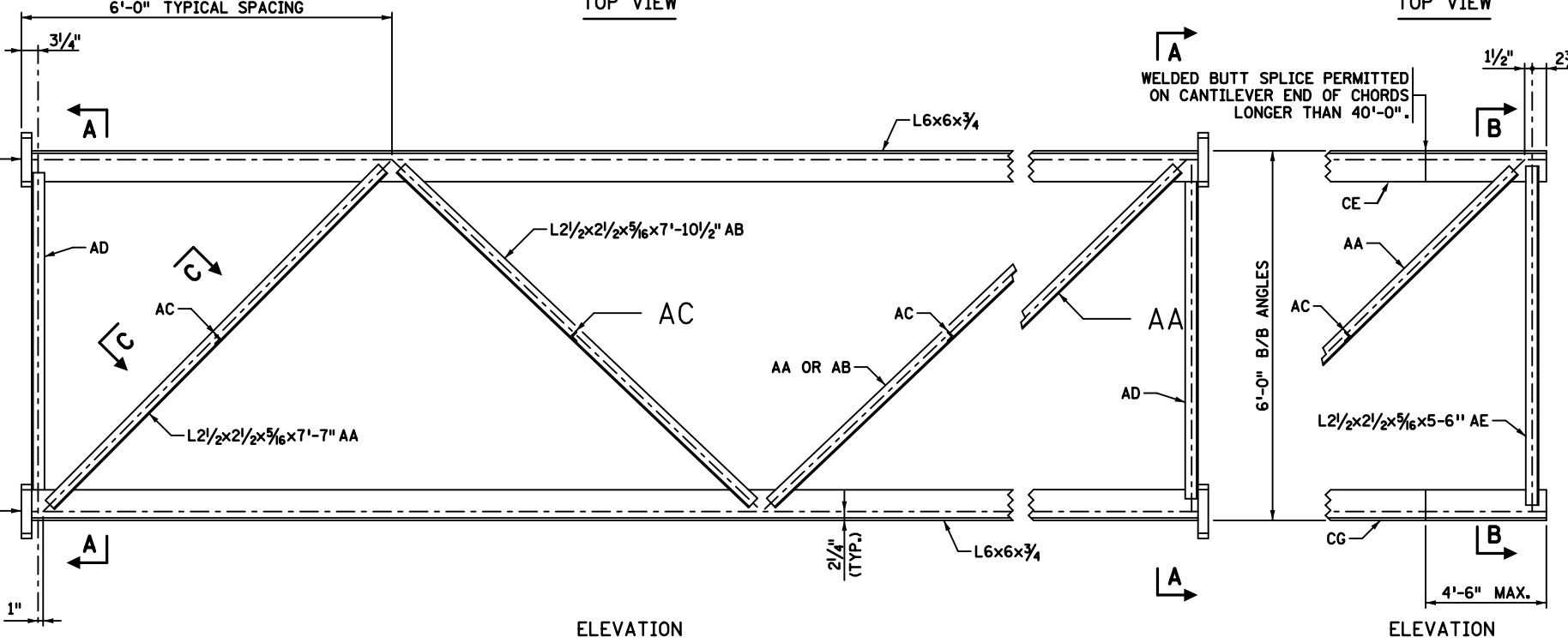


TOP VIEW

TOP VIEW

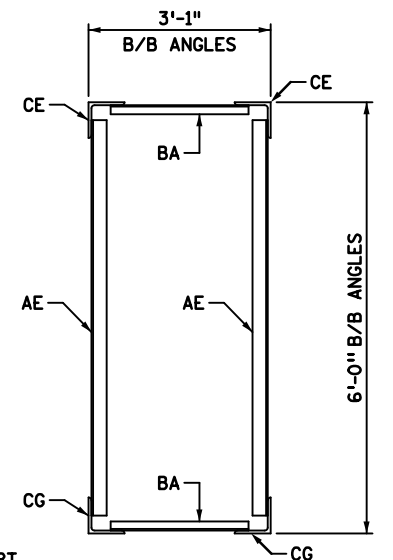


SECTION A-A

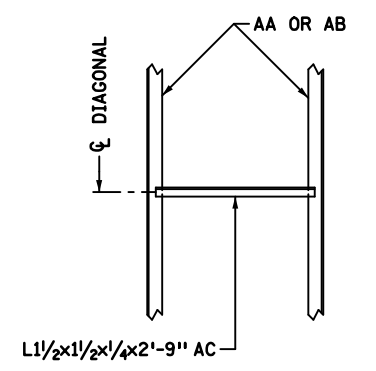


ELEVATION

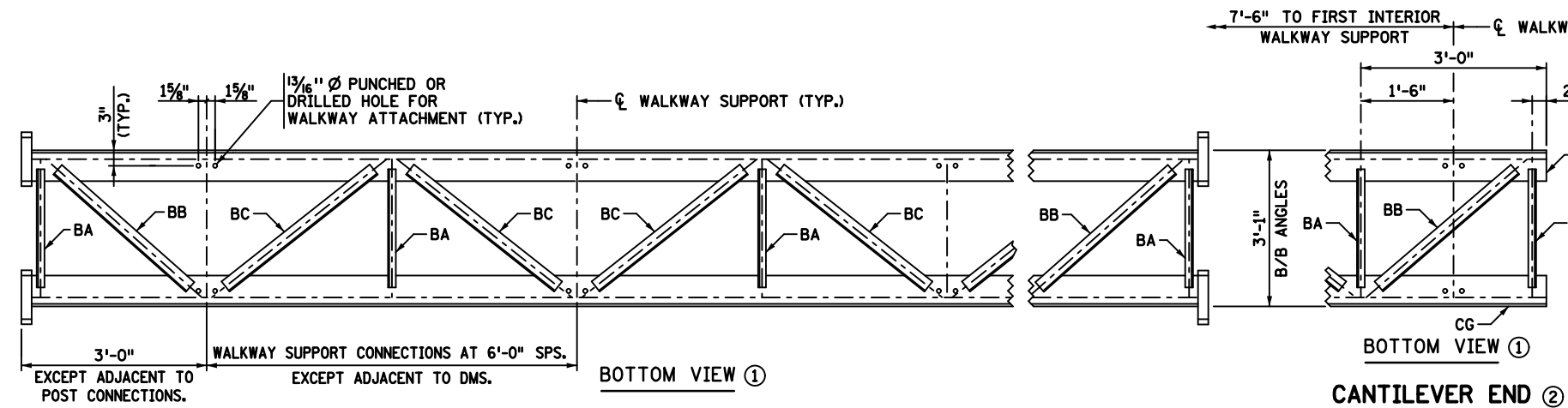
ELEVATION



SECTION B-B



VIEW C-C



BOTTOM VIEW ①

SIMPLE SPAN

BOTTOM VIEW ②

CANTILEVER END ②

GENERAL NOTES:

- MAKE TRUSS SECTIONS IN MULTIPLES OF 6'-0", EXCEPT THAT THE BRACING PANEL NEAREST EACH POST MAY VARY TO MAKE UP THE NEEDED SECTION LENGTH WITH A MAXIMUM ALLOWABLE LENGTH OF 6'-0". WELDED CHORD SPLICES ARE NOT PERMITTED EXCEPT IN CANTILEVER TRUSSES AS NOTED BELOW.
- SUPPLY CANTILEVER TRUSSES AS A SINGLE UNIT. WHEN CANTILEVER TRUSS LENGTH EXCEEDS 40'-0", CHORDS MAY BE SPLICED AS SHOWN IN THE END BRACING PANEL ONLY. USE A COMPLETE PENETRATION CHORD SPLICE WELD WITH 100% UT AND MT TESTING PER SPEC. 2471.3M.
- UNLESS OTHERWISE SHOWN, USE 1/4" FILLET WELDS ALL AROUND.
- PROVIDE (2) 1/16" BRASS, STAINLESS STEEL OR GALVANIZED STEEL SHIMS AT EACH FLANGE TO BRING TRUSS INTO CORRECT CAMBER AND ALIGNMENT.
- SHOP ASSEMBLE AND MATCH MARK TRUSSES.
- ALL VIEWS OF THE TRUSSES ARE DRAWN FROM THE INSIDE OF THE TRUSS LOOKING OUT.
- SEE STANDARD PLAN 5-297.765 FOR POST CONNECTION DETAILS.

NOTES:

- THE BOTTOM VIEW IS DETAILED TO PROVIDE FOR WALKWAY ATTACHMENT. WHERE THE WALKWAY IS OMITTED, PROVIDE STRUT BA AS INDICATED IN THE TOP VIEW.
- DETAILS SHOWN ARE FOR THE FREE ENDS OF THE CANTILEVER SPANS. ALL OTHER DETAILS FOR CANTILEVER TRUSSES SHALL BE AS SHOWN FOR THE SIMPLE SPANS.

<p>LEAD EXPERT OFFICE KEVIN WESTERN STATE BRIDGE ENGINEER</p>	<p>STANDARD OVERHEAD SIGN STRUCTURES - DESIGN D SIGN TRUSS DETAILS TYPE B</p>	<p>APPROVED: 05-01-2019 REVISED: 05-28-2019</p>	<p>THOMAS STYRBICKI STATE DESIGN ENGINEER</p>	<p>STANDARD PLAN 5-297.767</p>	<p>1 OF 1</p>
	<p>STANDARD PLAN</p>	<p>STATE PROJ. NO. TRUNK HWY.</p>	<p>SHEET NO. TOTAL SHEETS</p>		