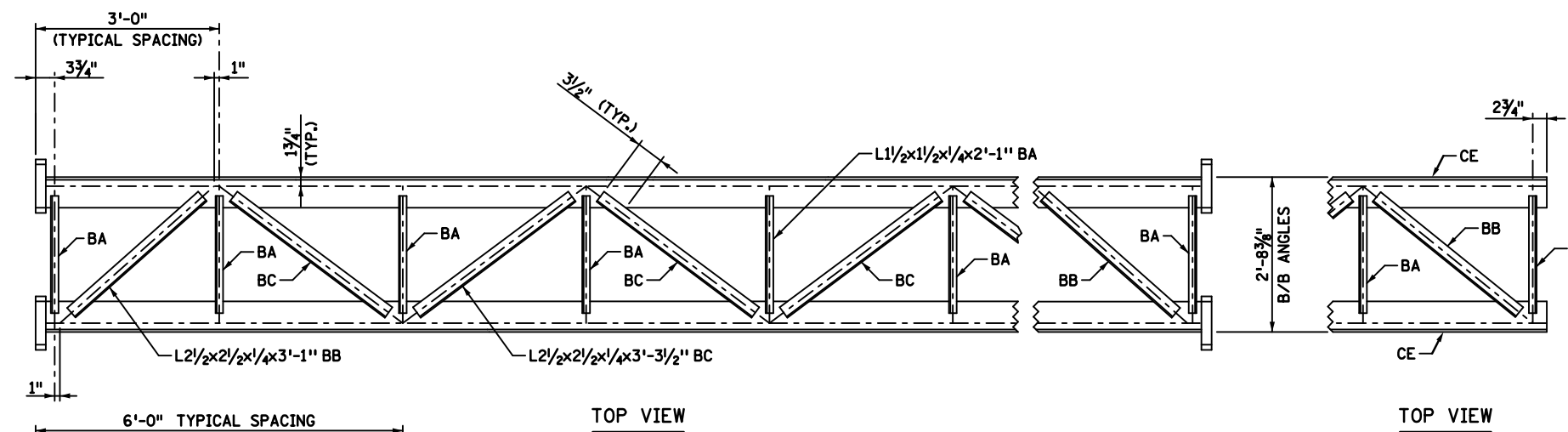
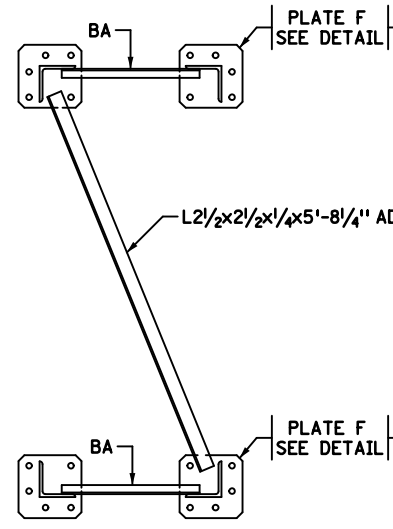


**PLATE F**

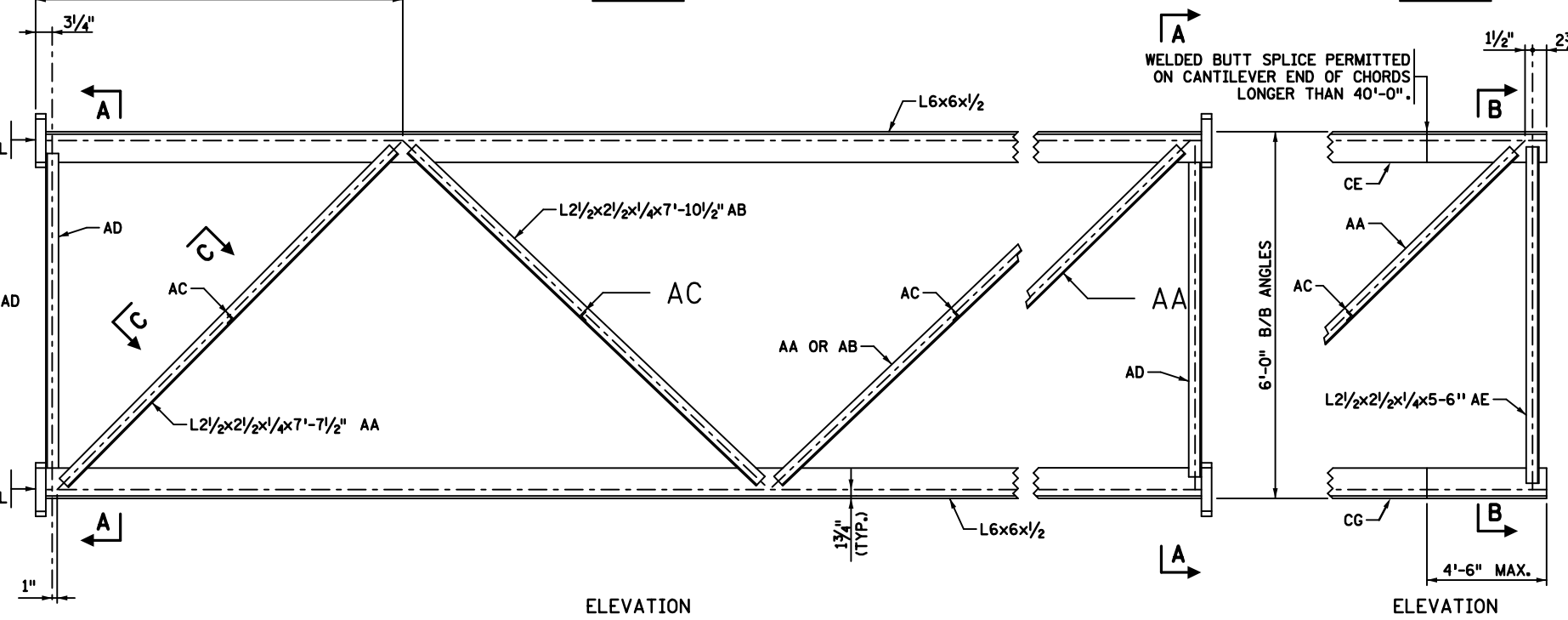


**TOP VIEW**

**TOP VIEW**

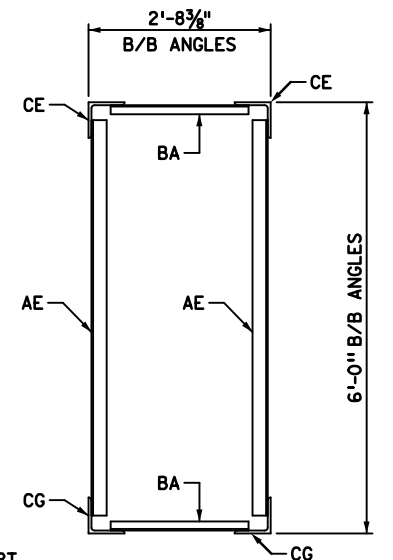


**SECTION A-A**

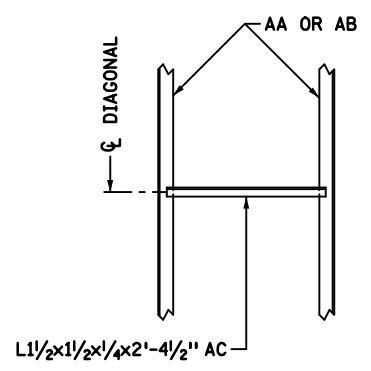


**ELEVATION**

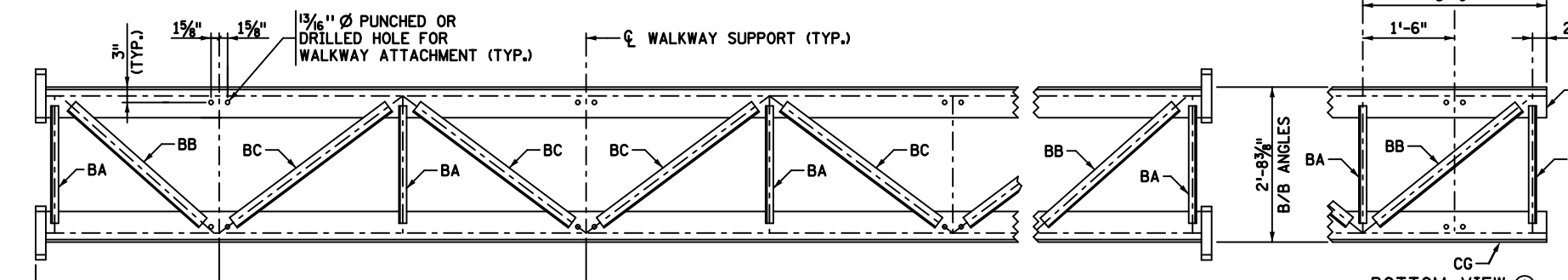
**ELEVATION**



**SECTION B-B**



**VIEW C-C**



**BOTTOM VIEW ①**

**BOTTOM VIEW ②**

**SIMPLE SPAN**

**CANTILEVER END ②**

**GENERAL NOTES:**

MAKE TRUSS SECTIONS IN MULTIPLES OF 6'-0", EXCEPT THAT THE BRACING PANEL NEAREST EACH POST MAY VARY TO MAKE UP THE NEEDED SECTION LENGTH WITH A MAXIMUM ALLOWABLE LENGTH OF 6'-0". WELDED CHORD SPLICES ARE NOT PERMITTED EXCEPT IN CANTILEVER TRUSSES AS NOTED BELOW.

SUPPLY CANTILEVER TRUSSES AS A SINGLE UNIT. WHEN CANTILEVER TRUSS LENGTH EXCEEDS 40'-0", CHORDS MAY BE SPLICED AS SHOWN IN THE END BRACING PANEL ONLY. USE A COMPLETE PENETRATION CHORD SPLICE WELD WITH 100% UT AND MT TESTING PER SPEC. 2471.3M.

UNLESS OTHERWISE SHOWN, USE 1/4" FILLET WELDS ALL AROUND.

PROVIDE (2) 1/16" BRASS, STAINLESS STEEL OR GALVANIZED STEEL SHIMS AT EACH FLANGE TO BRING TRUSS INTO CORRECT CAMBER AND ALIGNMENT.

SHOP ASSEMBLE AND MATCH MARK TRUSSES.

ALL VIEWS OF THE TRUSSES ARE DRAWN FROM THE INSIDE OF THE TRUSS LOOKING OUT.

SEE STANDARD PLAN 5-297.766 FOR POST CONNECTION DETAILS.

**NOTES:**

① THE BOTTOM VIEW IS DETAILED TO PROVIDE FOR WALKWAY ATTACHMENT. WHERE THE WALKWAY IS OMITTED, PROVIDE STRUT BA AS INDICATED IN THE TOP VIEW.

② DETAILS SHOWN ARE FOR THE FREE ENDS OF THE CANTILEVER SPANS. ALL OTHER DETAILS FOR CANTILEVER TRUSSES SHALL BE AS SHOWN FOR THE SIMPLE SPANS.

LEAD EXPERT OFFICE	KEVIN WESTERN STATE BRIDGE ENGINEER	STANDARD OVERHEAD SIGN STRUCTURES - DESIGN D SIGN TRUSS DETAILS TYPE A	APPROVED: 05-01-2019 REVISED: 05-28-2019	THOMAS STYRBICKI STATE DESIGN ENGINEER	STANDARD PLAN 5-297.766	1 OF 1
		STANDARD PLAN	STATE PROJ. NO.	SHEET NO.		
			TRUNK HWY.	TOTAL SHEETS		