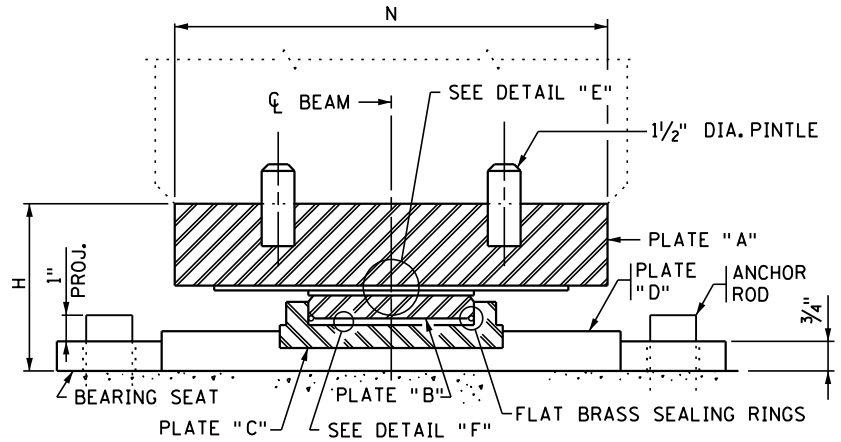
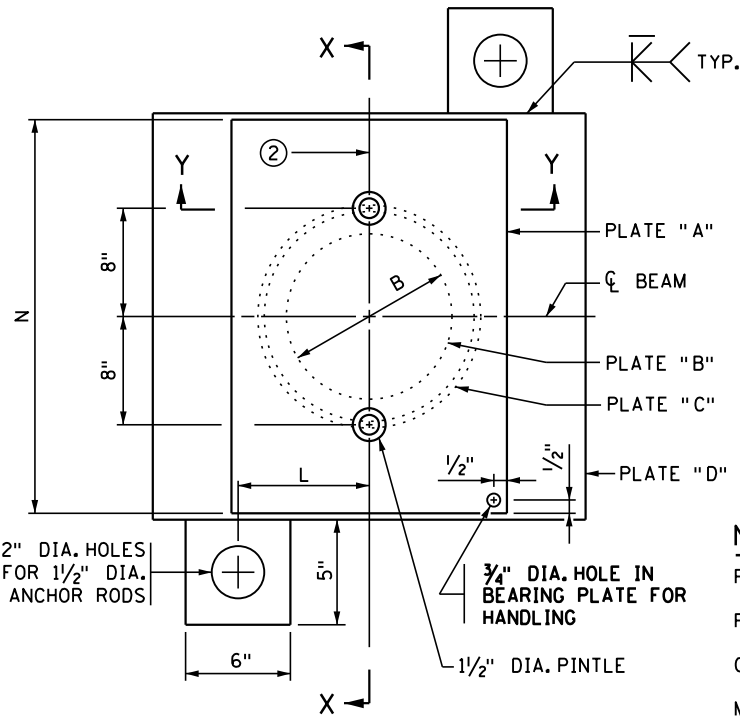


**SECTION Y-Y**

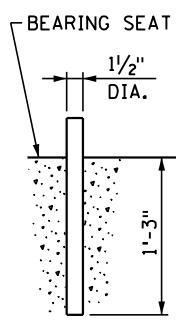
(ALL PLATES & MATERIALS BELOW PLATE "A" NOT SHOWN)



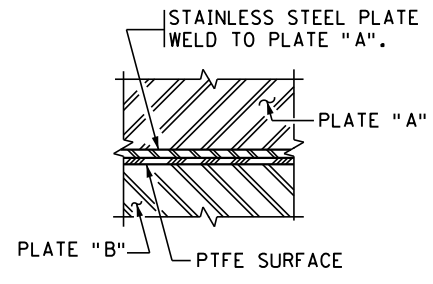
**SECTION X-X**



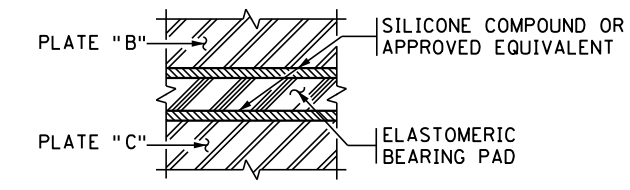
**PLAN**



**ANCHOR ROD DETAIL**



**DETAIL "E"**



**DETAIL "F"**

**NOTES:**

- PROVIDE MATERIALS, DESIGN AND FABRICATION PER SPECIAL PROVISIONS.
- PROVIDE STEEL PLATES AND PINTLES IN ACCORDANCE WITH SPEC. 3309.
- GALVANIZE PLATES "A", "D" AND PINTLES IN ACCORDANCE WITH SPEC. 3394.
- METALIZE PLATES "B" & "C" IN ACCORDANCE WITH SPEC. 2471.3.L.2.
- PROVIDE ANCHOR RODS IN ACCORDANCE WITH SPEC. 3385, TYPE B. GALVANIZE IN ACCORDANCE WITH SPEC. 3392.
- PERFORM SHIMMING UNDER PLATE "D" WITH FABRIC PADS PER AASHTO LRFD BRIDGE CONSTRUCTION SPEC. SECTION 18.10.
- MANUFACTURER TO SUBMIT ANY BEARING ASSEMBLY DIMENSIONS, DETAILS, OR MATERIALS NOT SHOWN TO THE ENGINEER FOR APPROVAL.
- ALL MATERIAL SHOWN IS INCLUDED IN THE PRICE BID FOR EACH BEARING ASSEMBLY, EXCEPT AS NOTED.
- ① MINIMUM ROTATION OF .02 RADIAN
- ② MARK CL OF BRG. PLATES "A" AND "B" TO FACILITATE PLACEMENT.
- ③ HEIGHT IS MINIMUM DIMENSION IF PLATE IS TAPERED.

**BEARING ASSEMBLY DIMENSIONS**

ASSEMBLY TYPE	ROTATION ①	TOTAL LOAD (KIPS)	TOTAL MOVEMENT (INCHES)	PLATE "A" ③	PLATE "B" (DIA.)	PLATE "C" (DIAMETER)	PLATE "D" (MAXIMUM)	DIMENSION "L"	DIMENSION "H"	DIMENSION "N"

DIMENSION "N" = BOTTOM FLANGE WIDTH OF BEAMS MINUS 1/2"

APPROVED: NOVEMBER 22, 2002  
*Daniel J. Woyan*  
 STATE BRIDGE ENGINEER

STATE OF MINNESOTA  
 DEPARTMENT OF TRANSPORTATION  
**POT TYPE BEARING ASSEMBLY**  
 (PRESTRESSED CONCRETE BEAMS)  
 (NON-GUIDED EXPANSION)

REVISION  
 11-03-2015  
 12-02-2020

DETAIL NO.  
**B313**