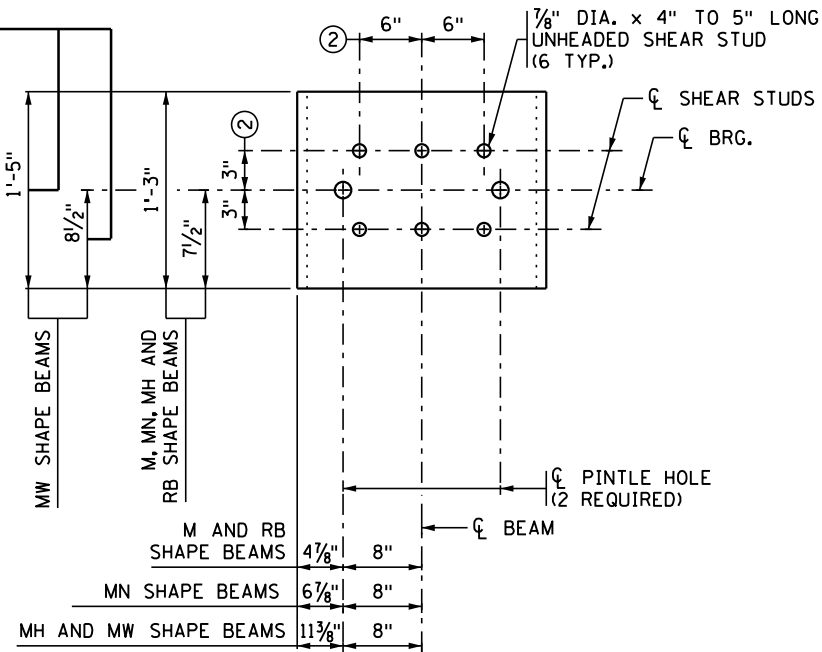


FRONT ELEVATION



SECTION A-A

DESIGNER NOTE (REMOVE PRIOR TO PRINTING FINAL PLAN): ADJUST THIS DIMENSION FOR LARGE MOVEMENT BEARINGS AND CONSIDER THE EFFECTS ON THE BEARINGS AND PORTION OF THE BEAM THAT CANTILEVERS BEYOND THE BEARING.

IF THIS SHEET IS MODIFIED, ADD A NOTE ON THE BEAM SHEET INDICATING THAT THE SOLE PLATE HAS BEEN MODIFIED, REFER TO B303.

NOTES:

PROVIDE STRUCTURAL STEEL IN ACCORDANCE WITH SPEC. 3306.

PROVIDE WELDED STUDS OF WELDABLE CARBON STEEL IN ACCORDANCE WITH SPEC. 3391.2D.

GALVANIZE SOLE PLATE FOR BEARING ASSEMBLY IN ACCORDANCE WITH SPEC. 3394 AFTER FABRICATION.

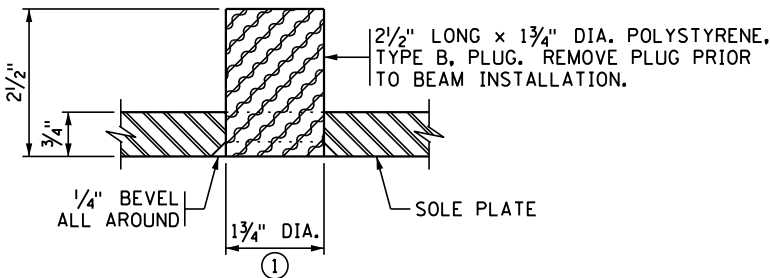
ENSURE PINTLE HOLES ARE FREE OF ZINC BUILD UP FROM GALVANIZING.

SOLE PLATES ARE INCLUDED IN THE COST OF PRESTRESSED CONCRETE BEAMS.

① FOR 1 1/2" DIA. PINTLES.

② THESE DIMENSIONS MAY BE MODIFIED TO CLEAR PRESTRESSED STRANDS. HOWEVER, CHANGES MUST BE APPROVED BY THE ENGINEER.

③ STUD WELDING PER AWS D1.1.



PINTLE HOLE DETAIL

APPROVED: SEPTEMBER 22, 2011
Nancy Dubenberger
 STATE BRIDGE ENGINEER

STATE OF MINNESOTA
 DEPARTMENT OF TRANSPORTATION
 SOLE PLATE
 (PRESTRESSED CONCRETE BEAMS)

REVISION
 01-05-2017
 12-20-2018
 02-08-2022

DETAIL NO.
 B303