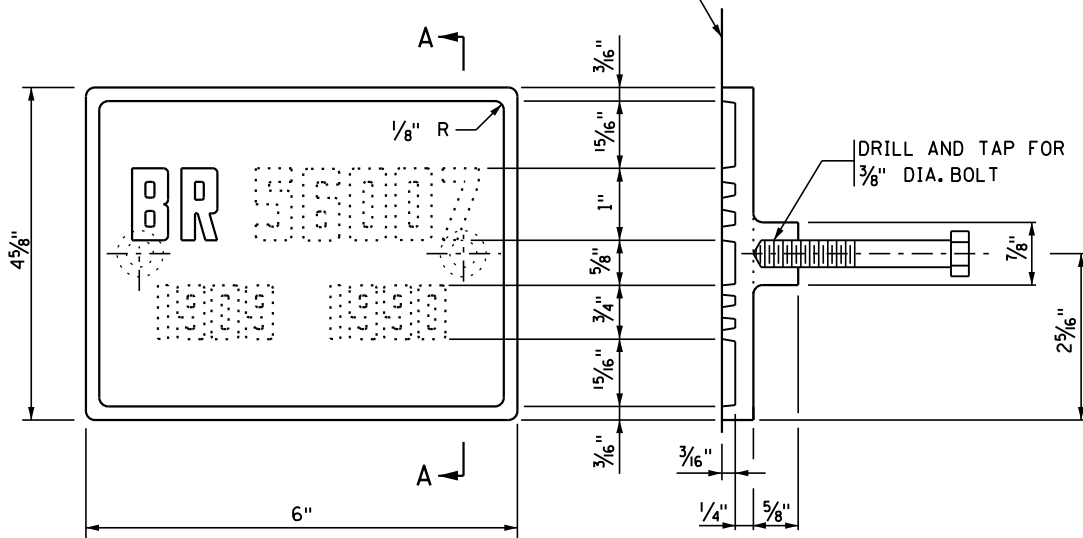


PLAN VIEW



ELEVATION

SECTION A-A

THE DASHED NUMBERS SHOWN ABOVE ARE FOR ILLUSTRATION.  
DATA TO BE SHOWN ON NAMEPLATE IS AS FOLLOWS:

BRIDGE: \_\_\_\_\_  
YEAR: \_\_\_\_\_ YEAR: \_\_\_\_\_

**DESIGNER NOTE**  
(REMOVE DESIGNER NOTE PRIOR TO PLOTTING FINAL PLAN);  
INDICATE THE YEAR WHICH THE BRIDGE WAS  
ORIGINALLY OPENED TO TRAFFIC.



NUMBERS FOR NAMEPLATE

**NOTES:**

- NO SHOP DRAWING REQUIRED.
- MATERIAL SHALL COMPLY WITH SPEC. 3327.
- LETTERS AND NUMBERS SHALL CONFORM TO THOSE SHOWN.
- DRAFT ON LETTERS AND NUMBERS SHALL NOT BE MORE THAN 3" IN 12".
- HORIZONTAL SPACING OF LETTERS AND NUMBERS SHALL PRODUCE A BALANCED LAYOUT IN PROPORTION TO SPACING SHOWN.
- BALANCED LAYOUT IN PROPORTION TO SPACING SHOWN.
- TOP SURFACE OF LETTERS, NUMBERS AND FRAMES SHALL BE BURNISHED.
- FURNISH 2 STEEL BOLTS 3/8" DIA. x 3" LONG WITH EACH PLATE.
- ALL DIMENSIONS FOR 3/4" HIGH LETTERS AND NUMBERS SHALL BE IN DIRECT PROPORTION TO THOSE SHOWN FOR THE 1" HIGH LETTERS AND NUMBERS.

APPROVED: NOVEMBER 22, 2002

*Samuel J. Wagoner*  
STATE BRIDGE ENGINEER

STATE OF MINNESOTA  
DEPARTMENT OF TRANSPORTATION

BRIDGE NAMEPLATE  
(FOR BRIDGE RECONSTRUCTION)

REVISION  
09-11-2014  
11-08-2018

DETAIL NO.

B102