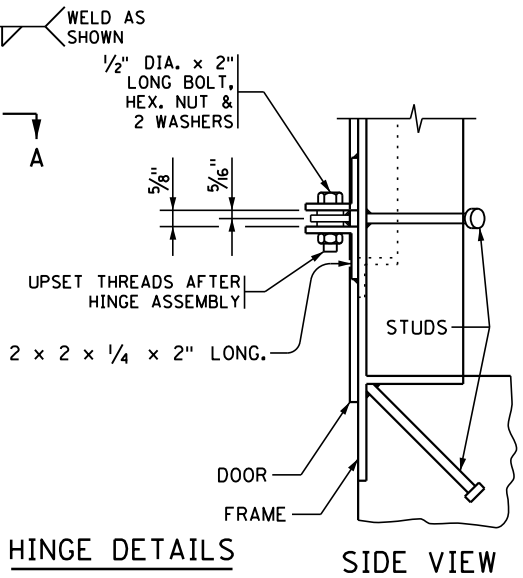
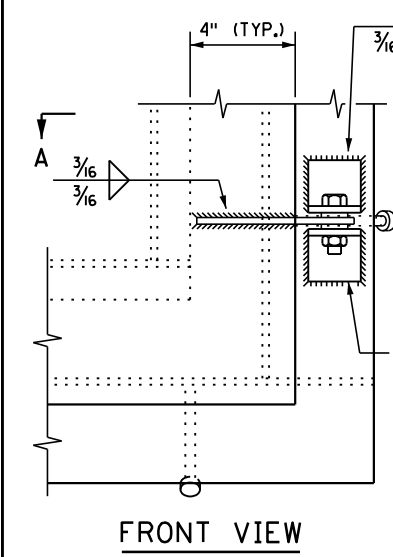


- NOTES:**
- WELD PER SPEC. 2471.
 - DOOR AND FRAME TO BE FLAT AFTER FABRICATION.
 - GALVANIZE STRUCTURAL SHAPES AFTER FABRICATION PER SPEC. 3394.
 - GALVANIZE HARDWARE PER SPEC. 3392.
 - ALL MATERIAL ON THIS DETAIL TO BE INCLUDED IN THE PRICE BID FOR OTHER ITEMS.
 - ALL STEEL TO BE 3306, UNLESS OTHERWISE NOTED.
 - DOOR TO BE LOCATED AWAY FROM TRAFFIC LANES.
 - ① DIMENSION TRANSVERSE TO ϕ BRIDGE WHEN IN HORIZONTAL POSITION TO MINIMIZE EFFECT ON THE BOTTOM SLAB REINFORCEMENT.
 - ② 4" BARREL BOLT (STANLEY NO. 1084 OR EQUAL)
 - ③ HORIZONTAL POSITION ONLY
 - ④ VERTICAL POSITION ONLY
 - ⑤ BARREL BOLT - HORIZONTAL POSITION LATCH PLATE & ANGLE - VERTICAL POSITION



APPROVED: NOVEMBER 22, 2002
Daniel J. Hanson
 STATE BRIDGE ENGINEER

STATE OF MINNESOTA
 DEPARTMENT OF TRANSPORTATION

INSPECTION DOOR
 (IN VERTICAL OR HORIZONTAL POSITION)

REVISION
 01-05-2017

DETAIL NO.
 B942