

**STANDARD BRIDGE BEAM SECTION**  
(OVERLAPPING SPLICE)

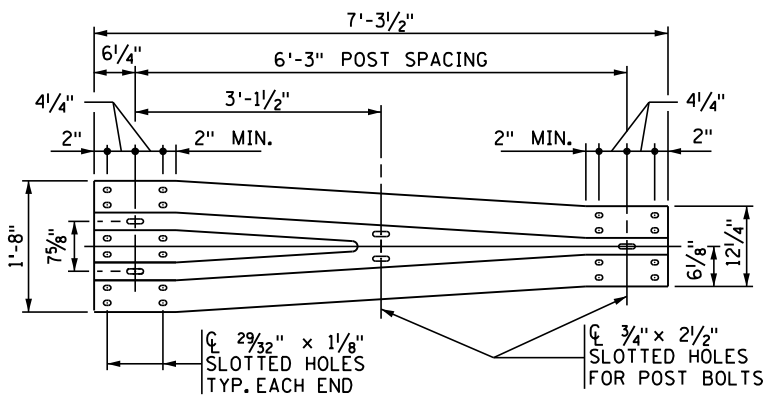
END VIEW

ELEVATION

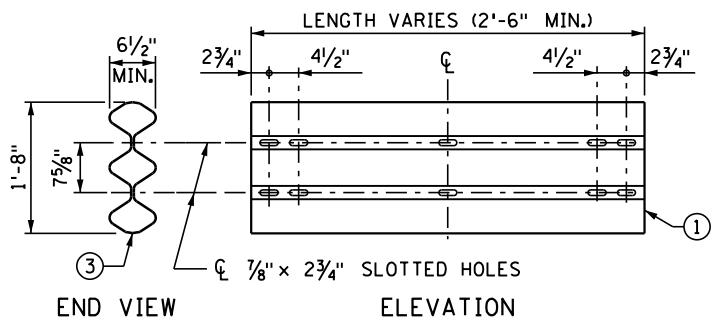
**STANDARD BRIDGE BEAM SECTION**  
(FOR USE WITH TUBULAR SLEEVE SPLICE)

END VIEW

ELEVATION



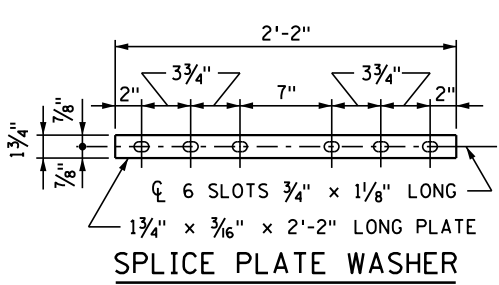
**TRANSITION BEAM SECTION**



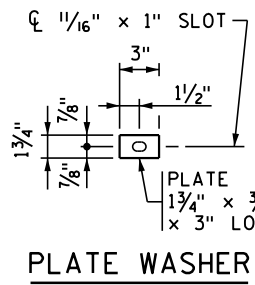
**CUSTOM BRIDGE BEAM SECTION**

**NOTES:**

- FABRICATE TUBULAR TRIPLE BEAM RAIL SECTIONS BY WELDING TWO (2) 10 GAUGE TRIPLE BEAM RAIL ELEMENTS AS SHOWN. CONSTRUCT TRAFFIC BARRIER PER SPEC. 2554, EXCEPT AS NOTED.
- GALV. RAIL COMPONENTS PER SPEC. 3394 AFTER FABRICATION.
- PROVIDE TRIPLE AND PLATE BEAM GUARDRAIL HARDWARE DIMENSIONS AND BOLT SPACING PER AASHTO M180.
- ① FOR ADDITIONAL BOLT HOLE SPACING FOR CONNECTION TO TRANSITION BEAM SECTION, SEE TRANSITION BEAM SECTION.
- ② TYPICAL POST SPACING, EXCEPT AS NOTED.
- ③ 60% MIN. WELD PENETRATION TOP AND BOTTOM.



**SPLICE PLATE WASHER**



**PLATE WASHER**

APPROVED: NOVEMBER 22, 2002  
*Samuel J. Hanson*  
STATE BRIDGE ENGINEER

STATE OF MINNESOTA  
DEPARTMENT OF TRANSPORTATION  
**TRIPLE BEAM GUARDRAIL**

REVISION  
01-05-2017

DETAIL NO.  
**B935**