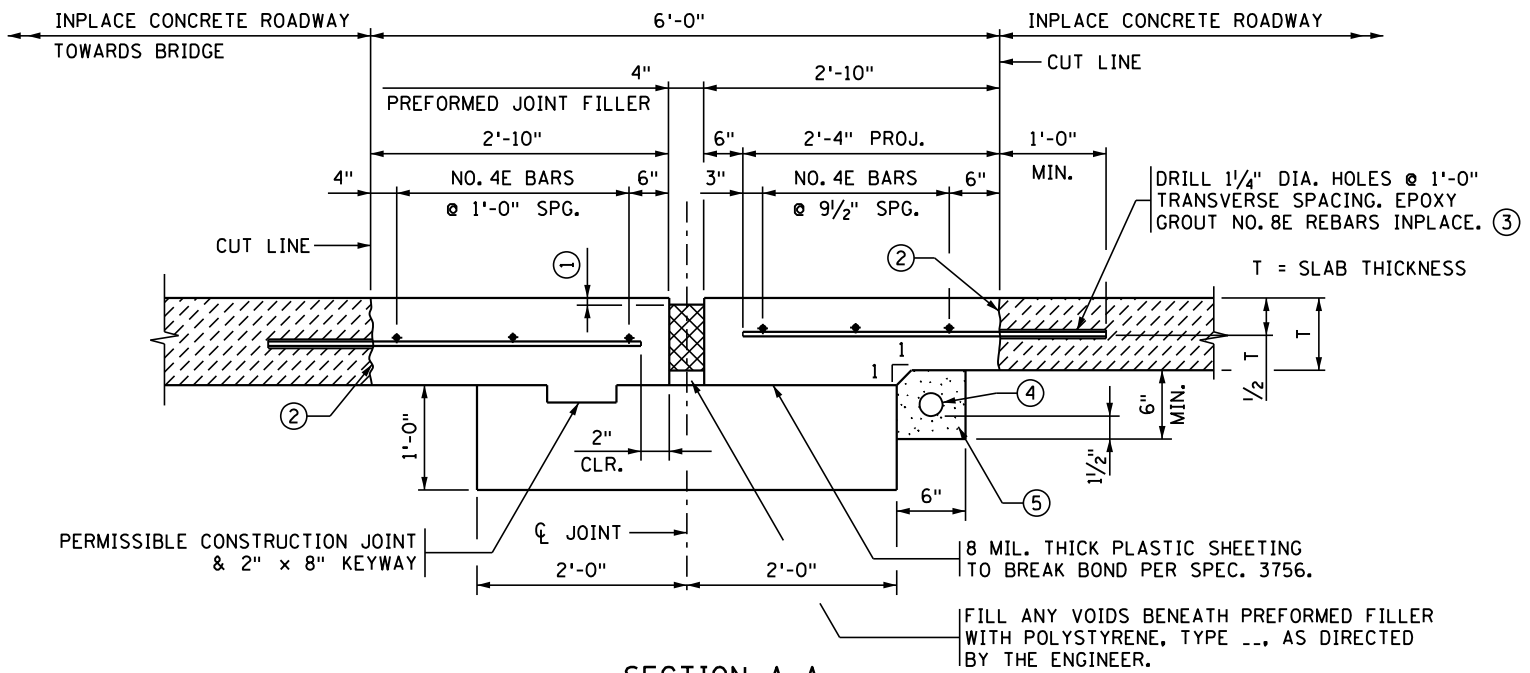


CONCRETE ROADWAY



SECTION A-A

- ① PLACE TOP OF FILLER $\frac{3}{4}$ " TO 1" BELOW TOP OF PAVEMENT. PLACE JOINT SEALER PER SPEC. 3720 ABOVE FILLER $\frac{3}{8}$ " \pm $\frac{1}{8}$ " BELOW TOP OF PAVEMENT.
- ② CLEAN EXPOSED FACE BY SAND BLASTING AND AIR BLASTING. APPLY APPROVED BONDING GROUT IMMEDIATELY PRIOR TO CONCRETE PLACEMENT. CONCRETE TO BE MIX NO. 3X33.
- ③ PLACE REBARS PARALLEL TO CL OF ROADWAY ON SKEWS AND TANGENT TO CL ON CURVED ROADWAYS.
- ④ 2" NOMINAL DIA. THERMOPLASTIC PERFORATED PIPE PER SPEC. 3245. WRAP PIPE WITH GEOTEXTILE PER SPEC. 3733. SLOPE PIPE TO DITCH ON LOW SIDE, $\frac{1}{8}$ " PER FOOT. MINIMUM SLOPE. FURNISHING AND INSTALLING DRAIN SYSTEM IS INCIDENTAL WITH NO DIRECT PAYMENT.
- ⑤ BACKFILL WITH FINE AGGREGATE PER SPEC. 3149, MODIFIED TO 0-3% PASSING A NO. 200 SIEVE.

DESIGNER NOTE (REMOVE PRIOR TO PLOTTING FINAL PLAN):
 DEFINE TYPE A OR B FOR POLYSTYRENE.

APPROVED: NOVEMBER 22, 2002

Daniel J. Wagoner
 STATE BRIDGE ENGINEER

STATE OF MINNESOTA
 DEPARTMENT OF TRANSPORTATION

CONCRETE RELIEF JOINT DETAIL
 (BRIDGE RECONSTRUCTION ON TRUNK HIGHWAY BRIDGES)

REVISION
 05-26-2006
 04-17-2013
 01-05-2017

DETAIL NO.

B850