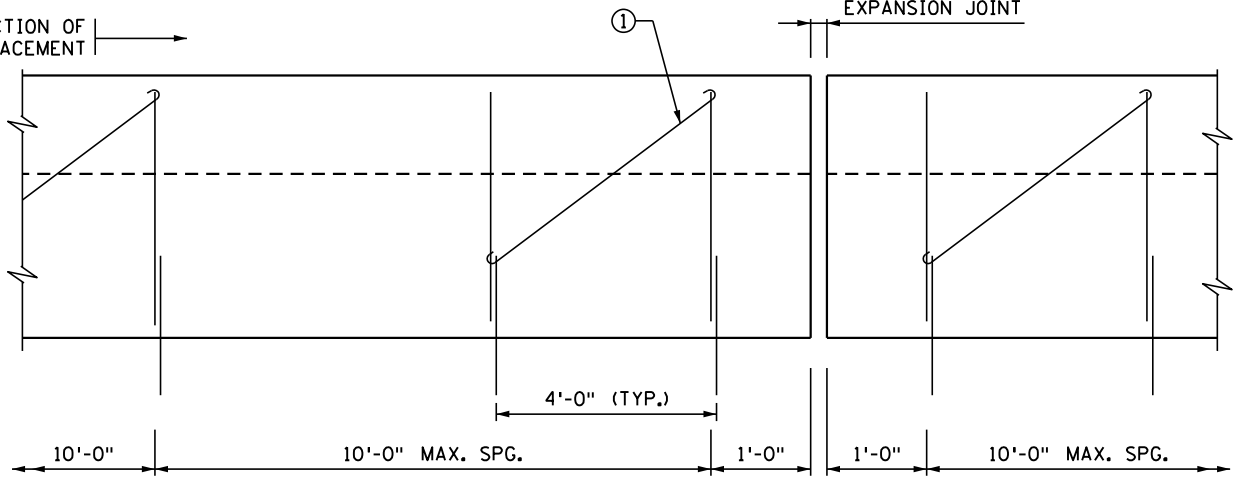
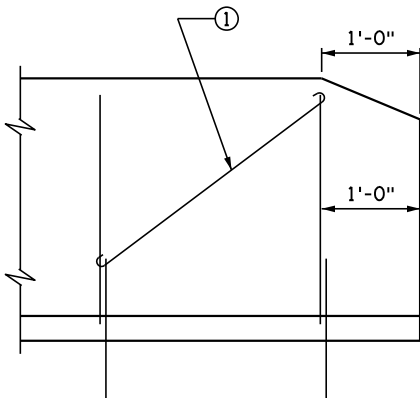


DIRECTION OF CONCRETE PLACEMENT →

EXPANSION JOINT

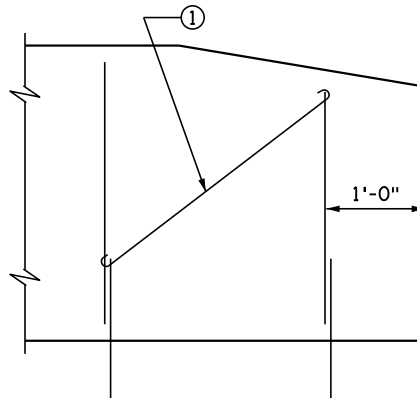


INSIDE ELEVATION OF BARRIER OR PARAPET



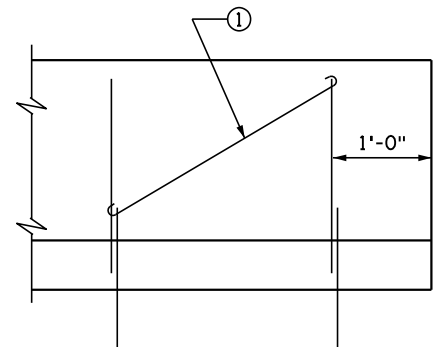
INSIDE ELEVATION OF F BARRIER

AT END OF BARRIER



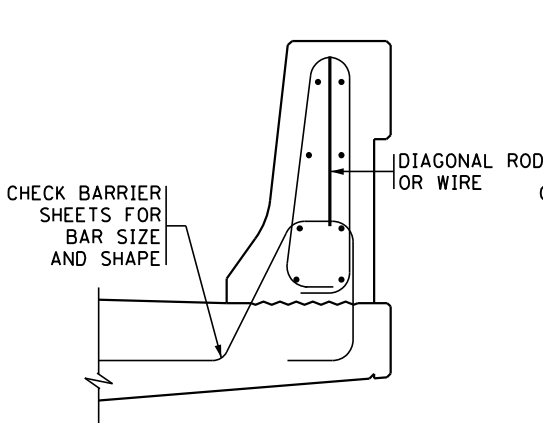
INSIDE ELEVATION OF S BARRIER

AT END OF BARRIER

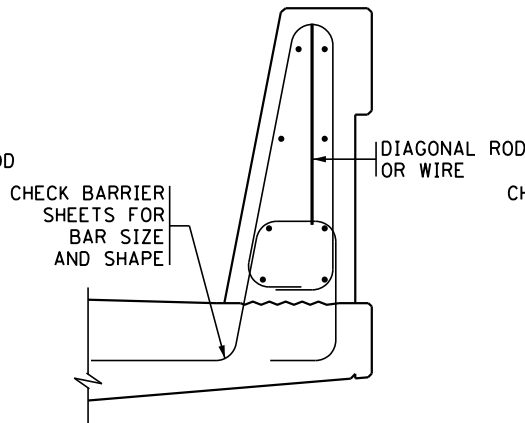


INSIDE ELEVATION OF PARAPET

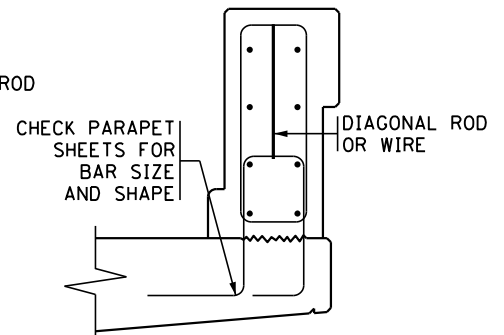
AT END OF PARAPET



F BARRIER SECTION



S BARRIER SECTION



PARAPET SECTION

NOTES:

FOR ADDITIONAL DIMENSIONS, DETAILS, REINFORCEMENT, NOTES, AND CONTROL JOINT SPACING SEE BARRIER OR PARAPET SHEET.

PAY QUANTITIES WILL NOT BE ADJUSTED AS A RESULT OF SELECTING SLIPFORM ALTERNATE.

USE A SIMILAR METHOD FOR TALLER BARRIERS OR MODIFIED VERSIONS OF THIS BARRIER.

TIE 100% OF THE REINFORCEMENT BAR INTERSECTIONS IN THE BARRIER OR PARAPET.

① 3/16" TO 1/4" SOFT STEEL ROD, 10 GAGE WIRE OR APPROVED EQUAL. GALVANIZE IN ACCORDANCE WITH SPEC. 3392 OR ASTM A641 REGULAR COATING.

APPROVED: AUGUST 24, 2016

Kevin Weston
STATE BRIDGE ENGINEER

STATE OF MINNESOTA
DEPARTMENT OF TRANSPORTATION

CONCRETE BARRIER OR PARAPET
(SLIPFORM ALTERNATE)

REVISION
04-09-2020
04-21-2021
02-08-2022

DETAIL NO.

B830