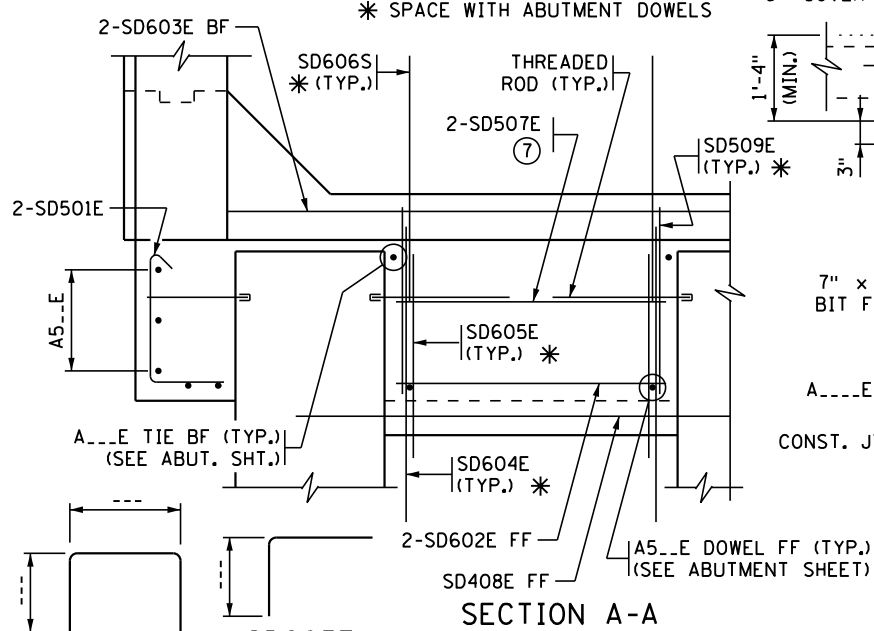


TEXT IN ITALICS ARE DESIGNER NOTES. REMOVE PRIOR TO PLOTTING FINAL PLAN.
USE B-DETAIL WHEN BARS ARE NOT CALLED OUT IN SUPERSTRUCTURE PLAN. CONCRETE VOLUME AND REBAR WEIGHT SHALL BE INCLUDED IN THE SUPERSTRUCTURE QUANTITIES. MAXIMUM BEAM SPACING IS 13 FEET. ADJUST SECTION A-A AND BAR SD501E FOR SKEW.

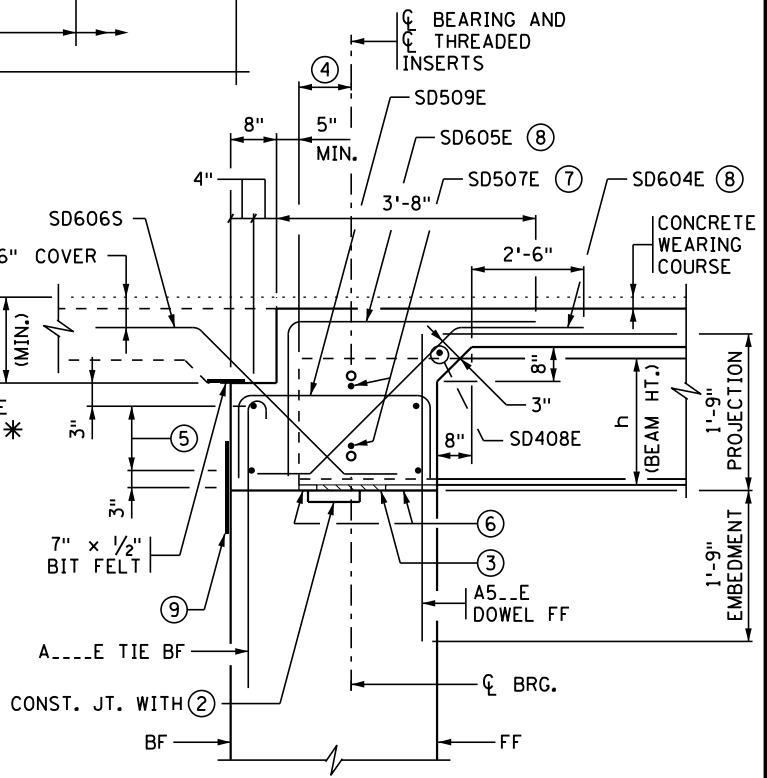
PARTIAL ELEVATION

* SPACE WITH ABUTMENT DOWELS



SECTION A-A

* SPACE WITH ABUTMENT DOWELS



SECTION B-B

NOTES:

DIAPHRAGM CONCRETE AND REINFORCEMENT QUANTITIES ARE INCLUDED IN SUPERSTRUCTURE QUANTITIES.

USE SAME CONCRETE MIX FOR END DIAPHRAGMS AS USED IN DECK.

BF DENOTES BACK FACE. FF DENOTES FRONT FACE.

- ① SD501E END TIE
- ② 2" x 12" KEYWAY (BETWEEN BEAMS ONLY)
- ③ 12" x 24" x 1/2" ELASTOMERIC BEARING PAD
- ④ SEE BEAM DETAIL SHEETS FOR DIMENSION.
- ⑤ SD603E BF & SD602E FF HORIZONTAL
- ⑥ 1/2" MIN. TYPE B POLYSTYRENE UNDER COMPLETE FLANGE
- ⑦ SPACE WITH THREADED RODS.
- ⑧ TIE BAR TO TOP MAT.
- ⑨ MEMBRANE WATERPROOFING SYSTEM PER SPEC. 2481.3.B.

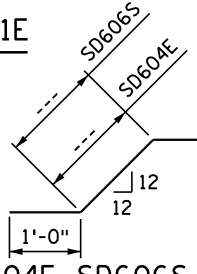
BILL OF REINFORCEMENT FOR END DIAPHRAGM

BAR	NO.	LENGTH	SHAPE	LOCATION
SD501E		'- "	┌──┐	HORIZONTAL END TIE
SD602E		'- "	──	HORIZONTAL FF
SD603E		'- "	──	HORIZONTAL BF
SD604E		'- "	┌──┐	DIAPH./FILLET TIE
SD605E		'- "	┌──┐	DIAPH./DECK TIE
SD606S		'- "	┌──┐	DIAPH./APPROACH TIE
SD507E		'- "	──	HORIZONTAL
SD408E		'- "	┌──┐	FILLET HORIZONTAL
SD509E		'- "	┌──┐	DIAPHRAGM TIE

SD509E

SD605E

SD501E



SD604E, SD606S

SD606S BAR IS STAINLESS STEEL

APPROVED: MAY 24, 2012
Nancy Subenberger
 STATE BRIDGE ENGINEER

STATE OF MINNESOTA
 DEPARTMENT OF TRANSPORTATION
CONCRETE END DIAPHRAGM
 (14", 18" AND 22" RECTANGULAR PRESTRESSED CONCRETE BEAMS)
 (INTEGRAL ABUTMENT)

REVISION
 4-17-2013
 8-24-2016
 01-05-2017
 05-10-2017
 11-08-2018

DETAIL NO.
B816