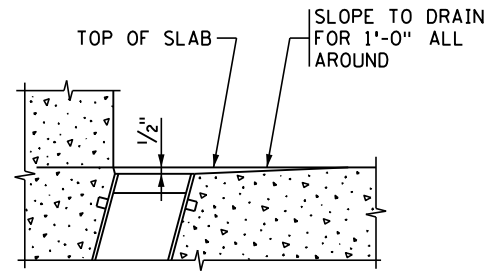
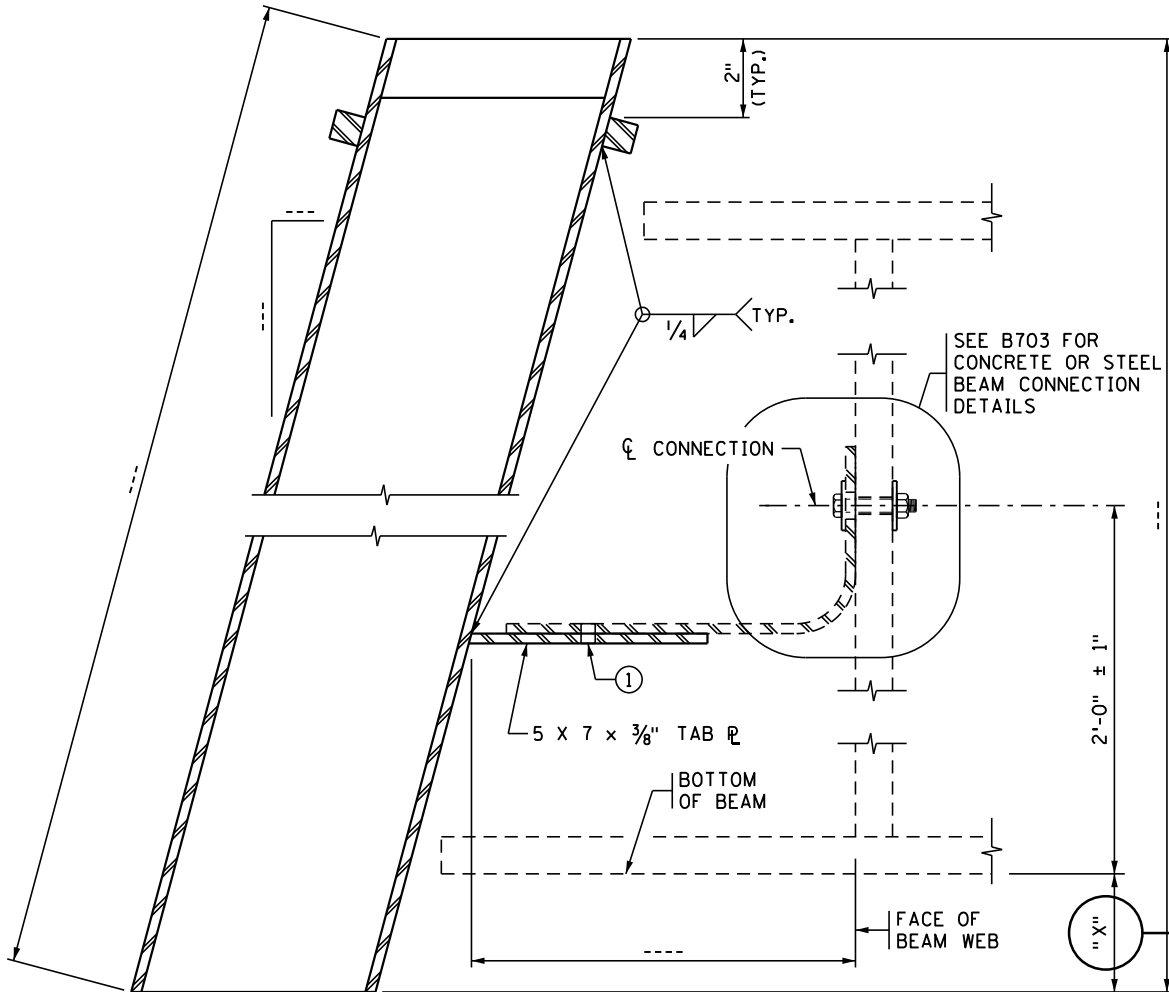


**PLAN VIEW**

(CONNECTION PLATE NOT SHOWN)



**PLACEMENT DIAGRAM**



**SECTION A-A**

(STEEL BEAM SHOWN)

SEE B703 FOR CONCRETE OR STEEL BEAM CONNECTION DETAILS

**DESIGNER NOTE**  
(REMOVE PRIOR TO PRINTING FINAL PLAN)  
REFER TO BDM ARTICLE 9.1.1 FOR EXTENSION LENGTH

**NOTES:**

- PROVIDE STRUCTURAL STEEL IN ACCORDANCE WITH SPEC. 3306.
- GALVANIZE BOLTS AND WASHER IN ACCORDANCE WITH SPEC. 3392.
- GALVANIZE OTHER MATERIALS IN ACCORDANCE WITH SPEC. 3394 AFTER FABRICATION.
- PAYMENT FOR FLOOR DRAIN TYPE ... INCLUDES ALL MATERIAL SHOWN ON THIS DETAIL.

① FIELD DRILL 1<sup>3</sup>/<sub>16</sub>" HOLE IN TAB PLATE TO PROVIDE FOR 3/4" BOLTED CONNECTION WITH WASHERS. ALLOW FOR A MINIMUM EDGE DISTANCE OF 1" TO EDGE OF TAB PLATE.

APPROVED: NOVEMBER 22, 2002

*Daniel J. Wray*  
STATE BRIDGE ENGINEER

STATE OF MINNESOTA  
DEPARTMENT OF TRANSPORTATION

**BRIDGE FLOOR DRAIN**  
(STRUCTURAL TUBE)  
(CONCRETE OR STEEL BEAM)

REVISION  
01-13-2004  
01-05-2017  
02-08-2022

DETAIL NO.

**B702**