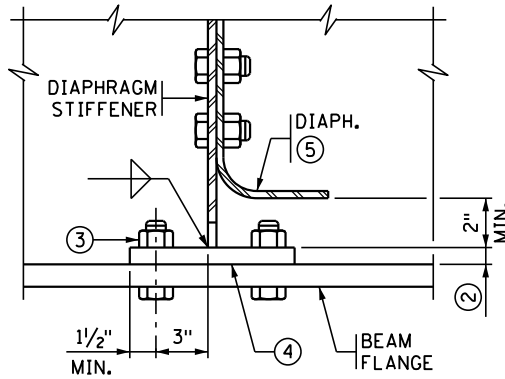


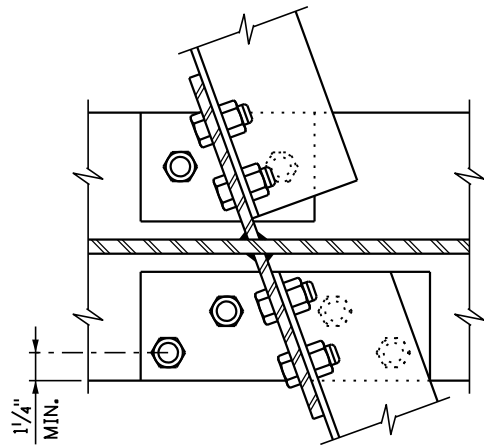
SECTION A-A

CONNECTION WITH 2 BOLTS
AT INTERIOR BEAMS



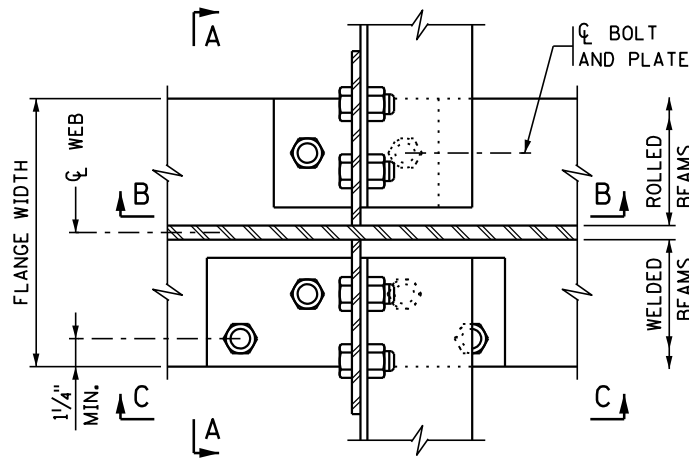
SECTION B-B

CONNECTION WITH 2 BOLTS



PLAN VIEW

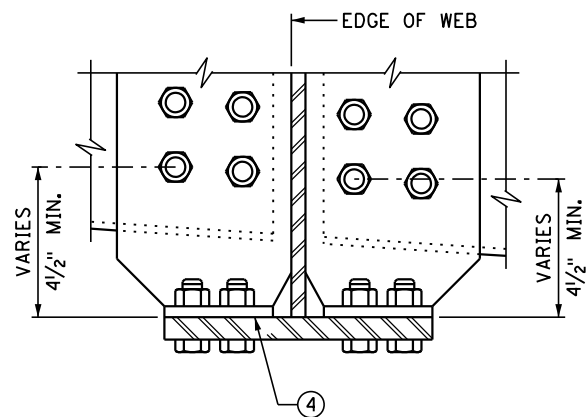
AT INTERIOR BEAMS
(UP TO 20° SKEW)



PLAN VIEW

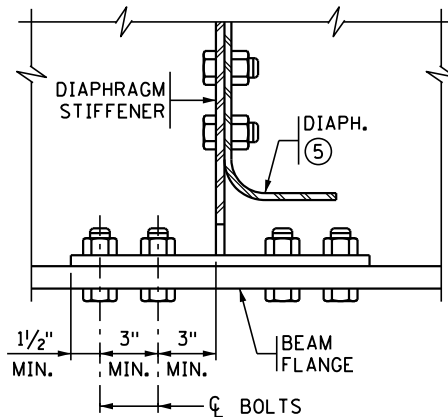
AT INTERIOR BEAMS

DESIGNER NOTE
(REMOVE PRIOR TO PLOTTING FINAL PLAN)
DETAILS SHOWN ARE FOR STRAIGHT BEAMS ONLY. DESIGNER MUST MODIFY THE NUMBER OF BOLTS AS NECESSARY FOR CURVED BEAMS.



SECTION A-A

CONNECTION WITH 4 BOLTS
AT INTERIOR BEAMS



SECTION C-C

CONNECTION WITH 4 BOLTS

NOTES:

PROVIDE STRUCTURAL STEEL PER SPEC. 3309.

- ① SEE DETAIL B411.
- ② MINIMUM PLATE THICKNESS IS 3/4".
- ③ BOLT PLATE TO BEAM FLANGE PRIOR TO WELDING PLATE TO DIAPHRAGM STIFFENER.
- ④ REMOVE LOOSE SCALE AND RUST FROM CONTACT AREA AT DIAPHRAGM CONNECTION. PROVIDE FLAT AND PRIMED SURFACE.
- ⑤ BENT PLATE DIAPHRAGMS SHOWN. FOR CROSS FRAME DIAPHRAGM SEE DETAIL B407 FOR STRAIGHT BEAMS AND DETAIL B408 FOR CURVED BEAMS.

APPROVED: NOVEMBER 22, 2002

Samuel J. Morgan
STATE BRIDGE ENGINEER

STATE OF MINNESOTA
DEPARTMENT OF TRANSPORTATION

BOLTED FLANGE TO STIFFENER DETAIL

REVISED
09-11-2004
10-28-2008
05-24-2012
01-05-2017

DETAIL NO.

B410