

## Fatal and Serious Injury Motor Vehicle Crashes:

# Older Driver Crashes

On Minnesota roadways, there were 1,771 crashes involving an older driver resulting in fatality or serious injury between 2019 and 2023. This is an average of 354 crashes per year and accounted for 19% of all the fatal and serious injury crashes in this period.

Older Drivers are a Strategic Focus Area. The strategic focus areas are emerging priorities. They are rising in importance due to factors such as changes in prevalence, public/stakeholder perception, and demographics. Strategies and tactics are available in the 2020-2024 Strategic Highway Safety Plan. ([www.mndot.gov/trafficeng/safety/shsp/index.html](http://www.mndot.gov/trafficeng/safety/shsp/index.html))

Focus Area definitions are published in the SHSP Technical Report. ([www.mndot.gov/trafficeng/safety/shsp/technical-report.pdf](http://www.mndot.gov/trafficeng/safety/shsp/technical-report.pdf))

### Distribution of Older Driver Crashes by Roadway Jurisdiction

	Rural		Urban		Total	
Trunk Highway	256	27%	109	11%	365	38%
County	221	23%	140	15%	361	38%
City	18	2%	165	17%	183	19%
Township	29	3%	0	0%	29	3%
Other	9	1%	6	1%	16	2%
<b>Total</b>	<b>533</b>	<b>56%</b>	<b>420</b>	<b>44%</b>	<b>954</b>	<b>100%</b>

Crashes involving an older driver occur most frequently on the state system.

Rural is defined as a population less than 5,000, per Crash Facts; crashes that are not geolocated are included in total but not rural/urban columns.

### Distribution of Older Driver Crashes by TZD Region

	Rural		Urban		Total	
Northeast	62	77%	19	23%	81	100%
Northwest	32	91%	3	9%	35	100%
East Central	130	78%	36	22%	167	100%
West Central	54	84%	10	16%	64	100%
Southeast	79	68%	38	32%	117	100%
South Central	60	79%	16	21%	76	100%
Southwest	67	93%	5	7%	72	100%
Metro	49	14%	293	86%	342	100%
<b>Total</b>	<b>533</b>	<b>56%</b>	<b>420</b>	<b>44%</b>	<b>954</b>	<b>100%</b>

Crashes involving an older driver occur most frequently in rural areas.

64% of these crashes occurred in Greater Minnesota.

Rural is defined as a population less than 5,000, per Crash Facts; crashes that are not geolocated are included in total but not rural/urban columns.

### Light Conditions

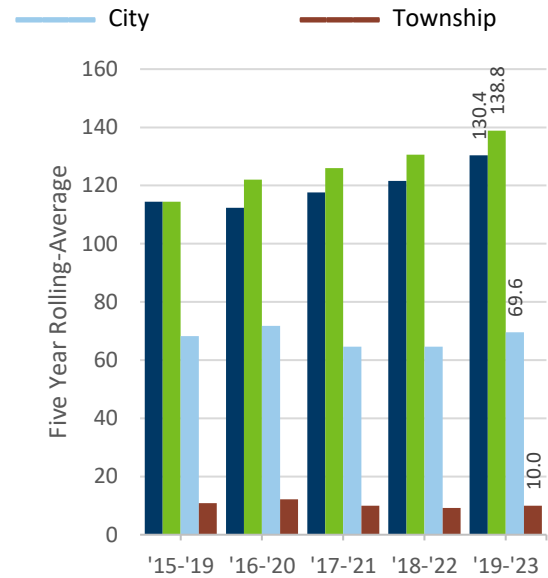
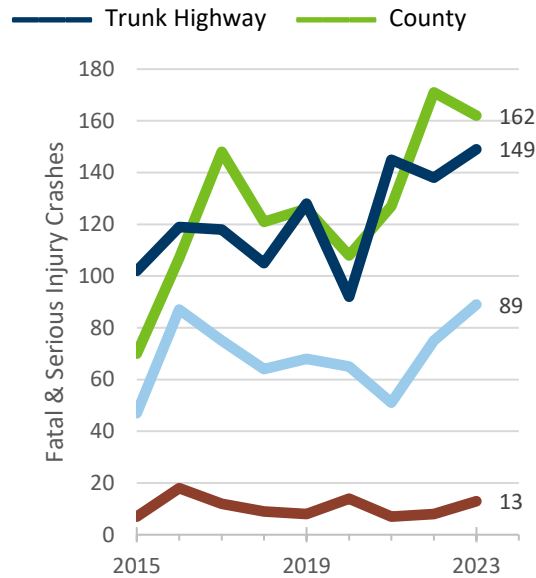
	Focus Area	All KA
Daylight	78.9%	59.7%
Sunrise/Sunset	4.6%	6.2%
Night/Dark	16.4%	33.6%
Street Lights On	8.6%	18.7%
Street Lights Off	0.5%	0.9%
Unknown/No Lighting	7.3%	14.0%
Other/Unknown	0.1%	0.5%

### Roadway Conditions

	Focus Area	All KA
Dry	81.0%	78.3%
Wet	8.5%	8.8%
Snow/Slush/Ice	8.2%	8.8%
Other	2.3%	4.1%

## Trends in Older Driver Crashes

Statewide, the percent of all fatal and serious injury crashes involving an older driver is increasing.



NOTE: In 2016, Minnesota modified the injury severity definitions to align with Federal Standards. This change resulted in an 80% increase in reported serious injury crashes.

## Interaction with other Strategic Highway Safety Plan focus areas

Focus Area	Older Driver Crashes		All K+A Crash Types		Difference	Rank*
Intersection	1,065	60.1%	4,575	48.8%	+ 11.3%	↑ #1
Head-on	300	16.9%	1,057	11.3%	+ 5.7%	↑ #2
Commercial Vehicle	232	13.1%	824	8.8%	+ 4.3%	↑ #3
Work Zone	49	2.8%	197	2.1%	+ 0.7%	—
Inattentive Driver	148	8.4%	735	7.8%	+ 0.5%	—
Train	4	0.2%	18	0.2%	+ 0.0%	—
Bicyclist	59	3.3%	364	3.9%	- 0.6%	—
Motorcycle	256	14.5%	1,572	16.8%	- 2.3%	—
Unbelted Occupant	202	11.4%	1,346	14.4%	- 3.0%	↓
Pedestrian	108	6.1%	1,037	11.1%	- 5.0%	↓
Younger Driver	166	9.4%	1,495	16.0%	- 6.6%	↓
Speed	236	13.3%	2,154	23.0%	- 9.7%	↓
Unlicensed Driver	176	9.9%	1,918	20.5%	- 10.5%	↓
Single Veh. Run-off-road	302	17.1%	2,980	31.8%	- 14.8%	↓
Impaired User	221	12.5%	2,616	27.9%	- 15.5%	↓
Older Driver	1,771	100.0%	1,771	18.9%	N/A	N/A

\* Rankings shows areas with greatest overrepresentation compared to all fatal and serious injury crashes.

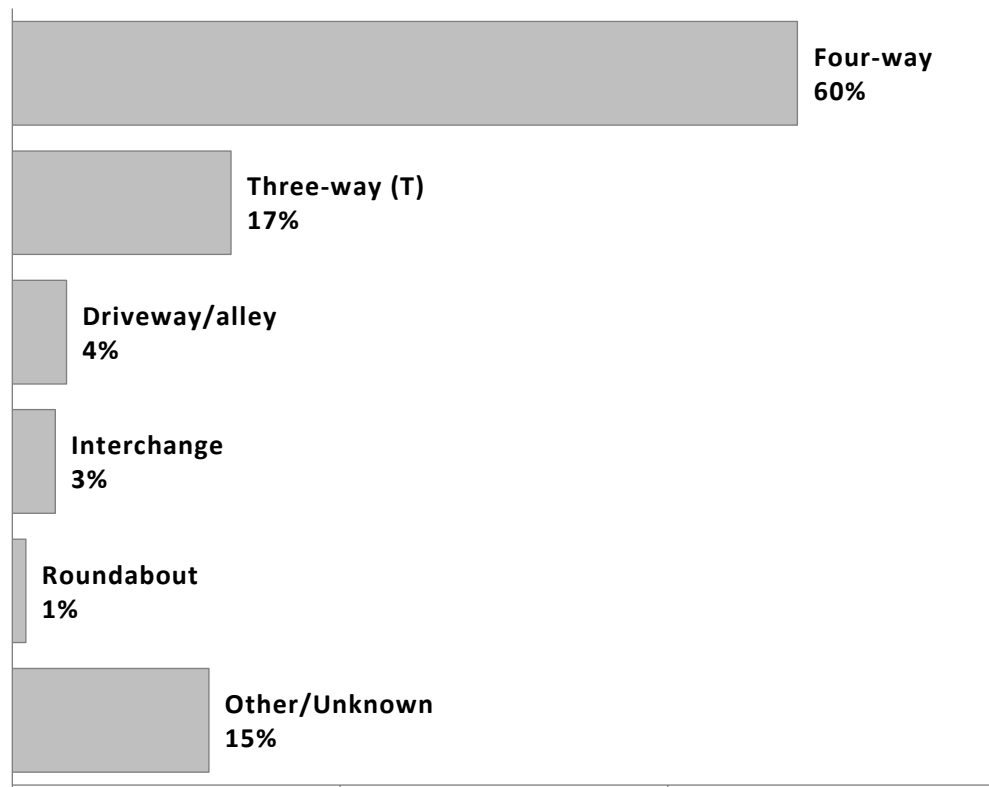
Compared to all fatal and serious injury crashes, the Intersection, Head-on and Commercial Vehicle focus areas are over-represented in crashes involving an older driver. These focus areas may present unique challenges and opportunities for reducing Older Driver Crashes in Minnesota.

### Seasonality of Older Driver Crashes

	3 AM to 6 AM	6 AM to 9 AM	9 AM to 12 PM	12 PM to 3 PM	3 PM to 6 PM	6 PM to 9 PM	9 PM to 12 AM	12 AM to 3 AM	Σ
January	0.3%	0.6%	1.1%	1.0%	1.1%	0.3%	0.1%	0.1%	5%
February	0.1%	0.7%	1.0%	1.4%	1.3%	0.9%	0.3%	0.1%	6%
March	0.3%	0.6%	0.8%	1.2%	0.8%	0.9%	0.3%	0.1%	5%
April	0.1%	0.4%	1.6%	1.5%	1.7%	0.3%	0.3%	0.2%	6%
May	0.2%	0.7%	1.7%	2.1%	2.5%	0.9%	0.8%	0.2%	9%
June	0.2%	0.5%	2.2%	3.4%	3.7%	1.2%	0.6%	0.2%	12%
July	0.1%	0.7%	2.4%	3.5%	3.2%	1.4%	0.6%	0.1%	12%
August	0.3%	0.7%	1.9%	2.9%	2.5%	1.5%	0.5%	0.2%	11%
September	0.2%	1.1%	1.8%	3.3%	2.4%	1.1%	0.5%	0.2%	11%
October	0.2%	0.9%	1.6%	2.0%	2.4%	1.4%	0.7%	0.1%	9%
November	0.1%	0.7%	1.5%	1.5%	2.5%	1.1%	0.2%	0.3%	8%
December	0.2%	0.6%	1.5%	1.8%	2.0%	0.5%	0.3%	0.1%	7%
Σ	2%	8%	19%	26%	26%	12%	5%	2%	100%

A fatal or serious injury crash involving an older driver occurred approximately every 24 hours. These crashes are more prevalent in the summer and autumn & during the afternoon and evening hours; this analysis does not control for existing traffic patterns.

### Top Five Intersection Types (where intersection/interchange related)



About 3 in 5 fatal and serious injury crashes involving an older driver (60%) were intersection or interchange related.