

Fatal and Serious Injury Motor Vehicle Crashes:

Inattentive Driver Crashes

On Minnesota roadways, there were 735 crashes involving an inattentive driver resulting in fatality or serious injury between 2019 and 2023. This is an average of 147 crashes per year and accounted for 8% of all the fatal and serious injury crashes in this period.

Inattentive Drivers are a Core Focus Area. The core focus areas have been given a high degree of emphasis in the traffic safety community and will continue to be strong areas of focus. Strategies and tactics are available in the 2020-2024 Strategic Highway Safety Plan. (www.mndot.gov/trafficeng/safety/shsp/index.html)

Focus Area definitions are published in the SHSP Technical Report. (www.mndot.gov/trafficeng/safety/shsp/technical-report.pdf)

Distribution of Inattentive Driver Crashes by Roadway Jurisdiction

	Rural		Urban		Total	
Trunk Highway	96	21%	61	13%	157	34%
County	115	25%	81	18%	196	43%
City	9	2%	77	17%	86	19%
Township	14	3%	0	0%	14	3%
Other	3	1%	5	1%	8	2%
Total	237	51%	224	49%	461	100%

Crashes involving an inattentive driver occur most frequently on the county system.

Rural is defined as a population less than 5,000, per Crash Facts; crashes that are not geolocated are included in total but not rural/urban columns.

Distribution of Inattentive Driver Crashes by TZD Region

	Rural		Urban		Total	
Northeast	30	70%	13	30%	43	100%
Northwest	31	89%	4	11%	35	100%
East Central	52	74%	18	26%	70	100%
West Central	29	94%	2	6%	31	100%
Southeast	23	70%	10	30%	33	100%
South Central	22	92%	2	8%	24	100%
Southwest	21	84%	4	16%	25	100%
Metro	29	15%	171	86%	200	100%
Total	237	51%	224	49%	461	100%

Crashes involving an inattentive driver occur most frequently in rural areas.

57% of these crashes occurred in Greater Minnesota.

Rural is defined as a population less than 5,000, per Crash Facts; crashes that are not geolocated are included in total but not rural/urban columns.

Light Conditions

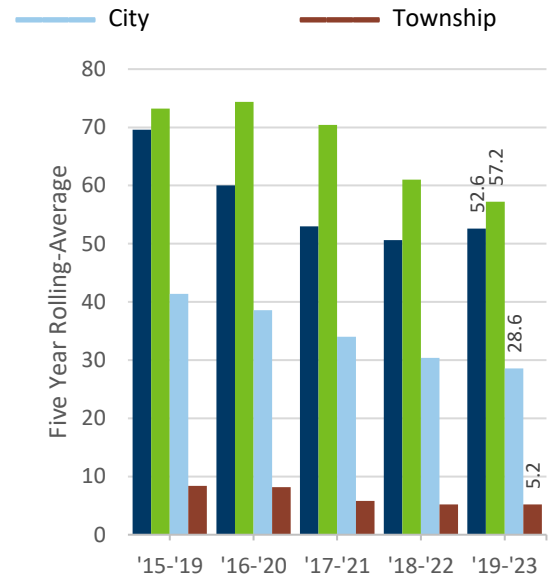
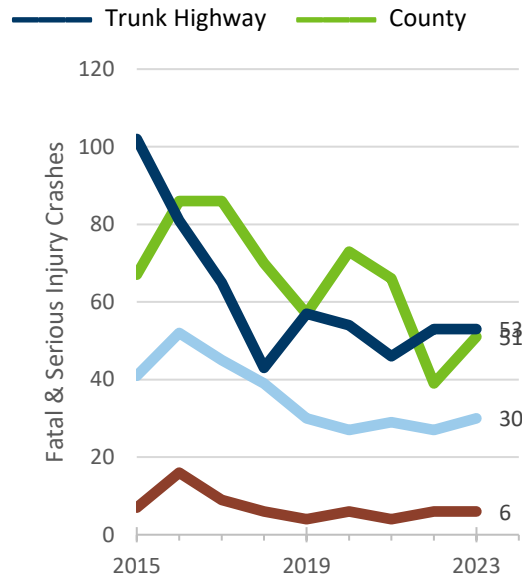
	Focus Area	All KA
Daylight	69.4%	59.7%
Sunrise/Sunset	6.8%	6.2%
Night/Dark	23.5%	33.6%
Street Lights On	13.3%	18.7%
Street Lights Off	0.5%	0.9%
Unknown/No Lighting	9.7%	14.0%
Other/Unknown	0.3%	0.5%

Roadway Conditions

	Focus Area	All KA
Dry	84.2%	78.3%
Wet	9.4%	8.8%
Snow/Slush/Ice	3.8%	8.8%
Other	2.6%	4.1%

Trends in Inattentive Driver Crashes

Statewide, the percent of all fatal and serious injury crashes involving an inattentive driver is decreasing.



NOTE: In 2016, Minnesota modified the injury severity definitions to align with Federal Standards. This change resulted in an 80% increase in reported serious injury crashes.

Interaction with other Strategic Highway Safety Plan focus areas

Focus Area	Inattentive Driver Crashes		All K+A Crash Types		Difference	Rank*
Younger Driver	148	20.1%	1,495	16.0%	+ 4.2%	↑ #1
Unbelted Occupant	132	18.0%	1,346	14.4%	+ 3.6%	↑ #2
Commercial Vehicle	85	11.6%	824	8.8%	+ 2.8%	↑ #3
Intersection	377	51.3%	4,575	48.8%	+ 2.4%	—
Speed	183	24.9%	2,154	23.0%	+ 1.9%	—
Older Driver	148	20.1%	1,771	18.9%	+ 1.2%	—
Work Zone	16	2.2%	197	2.1%	+ 0.1%	—
Head-on	83	11.3%	1,057	11.3%	+ 0.0%	—
Unlicensed Driver	150	20.4%	1,918	20.5%	- 0.1%	—
Train	1	0.1%	18	0.2%	- 0.1%	—
Bicyclist	18	2.4%	364	3.9%	- 1.4%	—
Pedestrian	63	8.6%	1,037	11.1%	- 2.5%	↓
Impaired User	161	21.9%	2,616	27.9%	- 6.0%	↓
Single Veh. Run-off-road	177	24.1%	2,980	31.8%	- 7.7%	↓
Motorcycle	56	7.6%	1,572	16.8%	- 9.2%	↓
Inattentive Driver	735	100.0%	735	7.8%	N/A	N/A

* Rankings shows areas with greatest overrepresentation compared to all fatal and serious injury crashes.

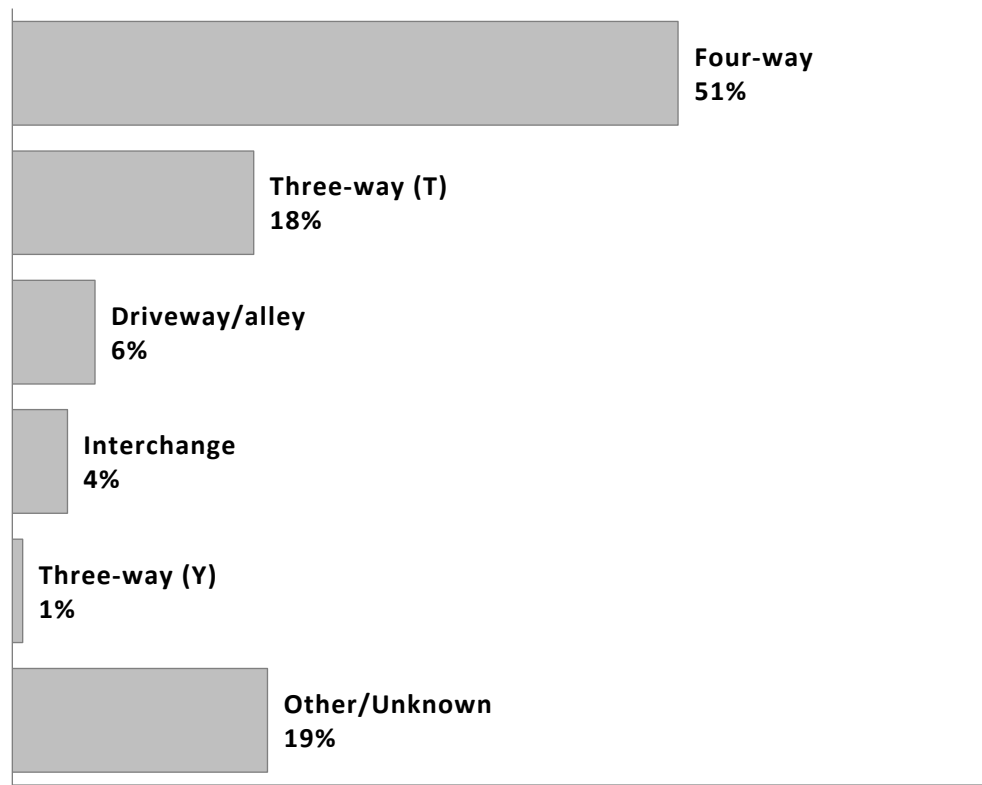
Compared to all fatal and serious injury crashes, the Younger Driver, Unbelted Occupant and Commercial Vehicle focus areas are over-represented in crashes involving an inattentive driver. These focus areas may present unique challenges and opportunities for reducing Inattentive Driver Crashes in Minnesota.

Seasonality of Inattentive Driver Crashes

	3 AM to 6 AM	6 AM to 9 AM	9 AM to 12 PM	12 PM to 3 PM	3 PM to 6 PM	6 PM to 9 PM	9 PM to 12 AM	12 AM to 3 AM	Σ
January	0.1%	0.8%	0.4%	1.0%	1.0%	1.1%	0.5%	0.3%	5%
February	0.3%	0.7%	0.4%	0.8%	1.0%	0.8%	0.4%	0.4%	5%
March	0.1%	0.8%	0.7%	1.4%	1.6%	0.7%	1.0%	0.4%	7%
April	0.5%	0.7%	1.1%	1.2%	1.6%	0.1%	0.5%	0.3%	6%
May	0.5%	0.8%	1.6%	2.2%	2.7%	1.9%	0.7%	0.3%	11%
June	0.1%	0.5%	1.2%	1.9%	3.8%	2.4%	0.4%	0.3%	11%
July	0.3%	0.3%	1.8%	2.9%	2.6%	1.6%	1.4%	0.5%	11%
August	0.4%	1.1%	0.8%	3.8%	1.9%	2.9%	1.4%	0.5%	13%
September	0.3%	1.4%	1.0%	3.3%	2.9%	1.6%	1.1%	0.5%	12%
October	0.3%	0.8%	1.6%	1.4%	2.0%	1.1%	0.7%	0.5%	8%
November	0.0%	0.5%	1.1%	1.2%	1.8%	0.7%	0.3%	0.5%	6%
December	0.3%	0.4%	0.5%	1.4%	0.8%	1.1%	0.1%	0.5%	5%
Σ	3%	9%	12%	23%	24%	16%	9%	5%	100%

A fatal or serious injury crash involving an inattentive driver occurred approximately every 2.5 days. These crashes are more prevalent in the summer and autumn & during the afternoon and evening hours; this analysis does not control for existing traffic patterns.

Top Five Intersection Types (where intersection/interchange related)



About 1 in 2 fatal and serious injury crashes involving an inattentive driver (52%) were intersection or interchange related.