

## TAMS HydInfra Materials

---

### Aluminized Steel –

Has a sheen like aluminum but edges could show rust.



### Bituminous-Coated (Steel) –

May contain asbestos, looks like tar on CMP, marked in plans as “AB-Bonded”, installations stopped in 1970’s and need testing prior to any repair/ removal.



**Brick/Masonry –**



**Concrete –**



**Corg. Aluminum –**

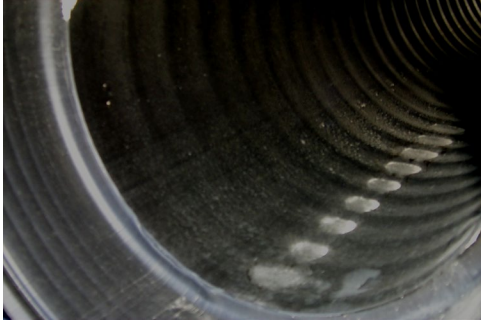
Material is thicker and softer than steel, not magnetic and does not rust.





### **Corg. Plastic (HDPE) –**

High Density Polyethylene pipe is dual walled that is smooth inside and corrugated outside. HDPE is always black.



### **Corg. Steel (CSP) –**



### **Liner Concrete –**

Cementous or fibrous spray applied liner. Is also used when a concrete pipe installed inside of another pipe. Typically, only occurs when a cattle pass is no longer needed, and a concrete pipe is laid inside it for drainage purposes.



### Liner Cured in Place (CIPP)

CIPP Liner is resin-filled fabric, inflated and cured with hot water or steam or UV light till it's rigid. Looks like off-white fiberglass.



### Liner HDPE –

Commonly referred to as slipliner, Snap-Tite or butt-fused solid HDPE liner has grout between original pipe and liner.



### Liner Metal –

Steel flat-seamed pipe is sometimes used as liner



**Liner PVC –**



**Other –**

When material is not in list (Cast Iron, Excavated Rock).



**Perforated Plastic –**

Used in pond underdrains to filter stormwater.





### Polymeric-Coated –

A steel pipe which has a thin plastic sheeting applied.



### Polypropylene –

Polypropylene Pipe is grey and stiffer than HDPE.



### PVC –

White or green plastic, more brittle than HDPE, especially in cold. Used in storm drains and infiltration trenches.



For more information visit: <https://www.dot.state.mn.us/bridge/hydraulics/inspector.html>

Or contact: Kellie Thom 612-322-0564

kellie.thom@state.mn.us

### SRPE –

Steel Reinforced Polyethylene pipe has steel exterior flanges and is coated with HDPE. Blue spiraling line insides shows it is SRPE.



### Steel Casing –



### Structural Plate –

Structural Plate is galvanized steel plates bolted together to build large culverts, usually arch shape.



### Timber –



### Unknown –

When material is unknown – to be described in comments



### Vitrified Clay –

Red fired clay tile exists in some old storm drains and old farm drain tile.

