

Summary Description Continued

are punched steel eye-bars; the hip vertical members consist of forged square steel rods; other verticals consist of two steel channel sections riveted with lacing bars; diagonal members are punched steel eye-bars; the counters are round steel turnbuckles. The deck, which consists of 3 x 4s on edge with a double-track plank wearing surface, is supported by steel I-beam stringers bolted atop the floor beams. The steel I-beam floor beams are suspended from the superstructure with U-bolts. Diagonal portal bracing consists of paired steel angle sections. Sway bracing consists of struts (four angle sections with lacing bars) and paired angle section knee braces.

Sources of Information

- A. "MNDOT Supplemental Structure Inventory," form in MNDOT file for Br. No. 90980.

Date of Survey: November, 1987

Surveyor: Fredric L. Quivik
Architectural Historian
Renewable Technologies, Inc.
Butte, MT

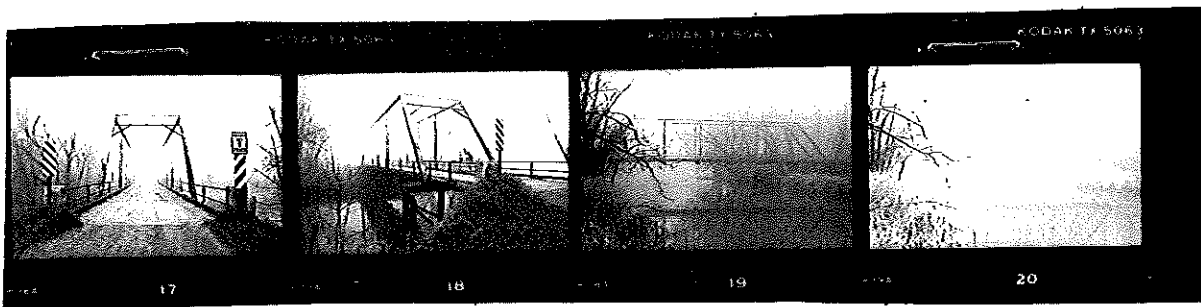
STATEWIDE BRIDGE SURVEY: PHOTO CONTACT SHEET RECORD, Br. No. 90980

Contact Sheet # 09146

November, 1987

Photographer: Fredric L. Quivik

Frame No.	Bridge No.	County	City/ Township	Subject	Camera Facing
17.	90980	Meeker	Kingston T.	portal view	N
18.	"	"	"	3/4 view	NE
19.	"	"	"	west elevation	E
20.	"	"	"	west elevation	E
21.	"	"	"	new steel support under south end, main span	W

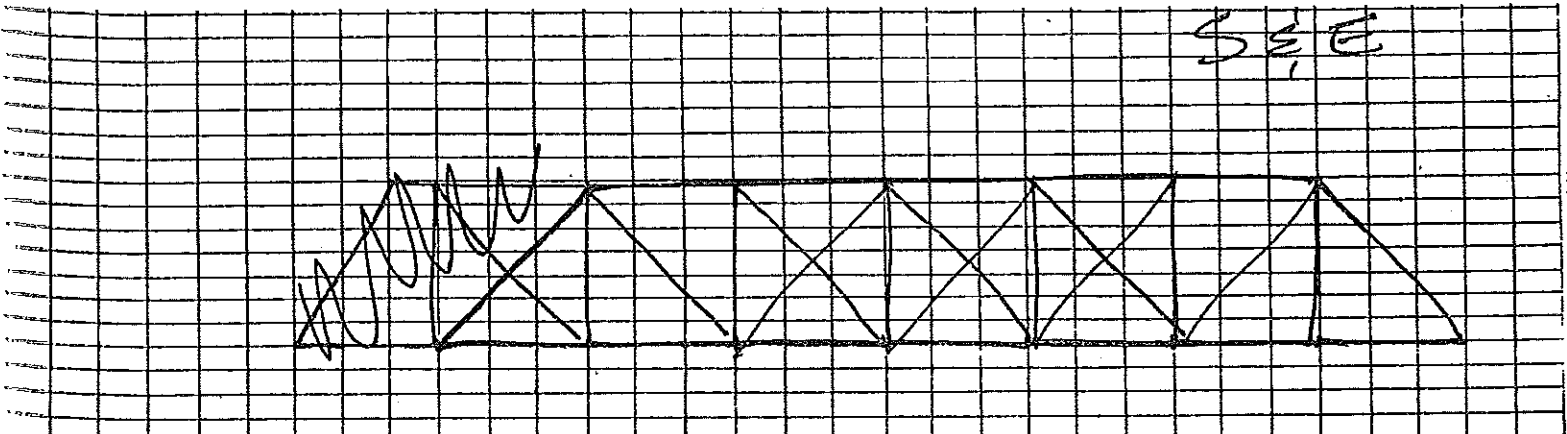


COUNTY: MECKER TOWNSHIP/ CITY: FOREST CITY / KINSTON
 BRIDGE NAME: SALISBURY BR. 90980
 LOCATION: MIDWAY BETWEEN FOREST C. & KINSTON
 (APPROX) YR BLT: _____

PLAQUE

CARRIES LOCAL RD OVER CROW RIVER

 MAIN SPAN(S) _____
 APPROACH SPAN(S) _____
 APPROACH SPAN(S) _____

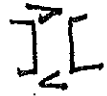


MEMBER DESCRIPTION:

LOWER CHORD: PUNCHED EYE-BARS

SUPERSTRUCTURE:

VERTICALS: AMP: ~~FORGED~~ EYE-B; OTHERS

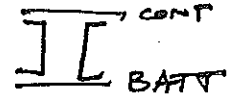


RAILING:

L BOLTED TO VERT

DIAGONALS: PUNCHED EYE-B WITH ROUND ROD TURNBUC

UPPER CHORD: _____



SUBSTRUCTURE:

NEW H-BEAM PILES, S END & N. END
CONCR. ABUT S. END, N. END
 TYPE of MOVABLE END SLIDING PLATE, N. END

ONE STEEL CYL. PIER IS UNDER S. APPR. SPAN (ON ITS SIDE)

CONNECTIONS: FLOOR BM. TO SUPERSTR. U-BOLTS

PANEL INTERSECTIONS PIN

STRINGERS TO FLR. BM. BOLTED ATOP FL. BM.

FLOOR SYSTEM: FLOOR BMS. I-BEAMS

STRINGERS " "

DECK 3x6 ON EDGE, DOUBLE TRK

LATERAL BRACING:

PORTAL SWAY FLOOR

PORTAL L

SWAY STAYS & ROD LATERALS

FLOOR _____

