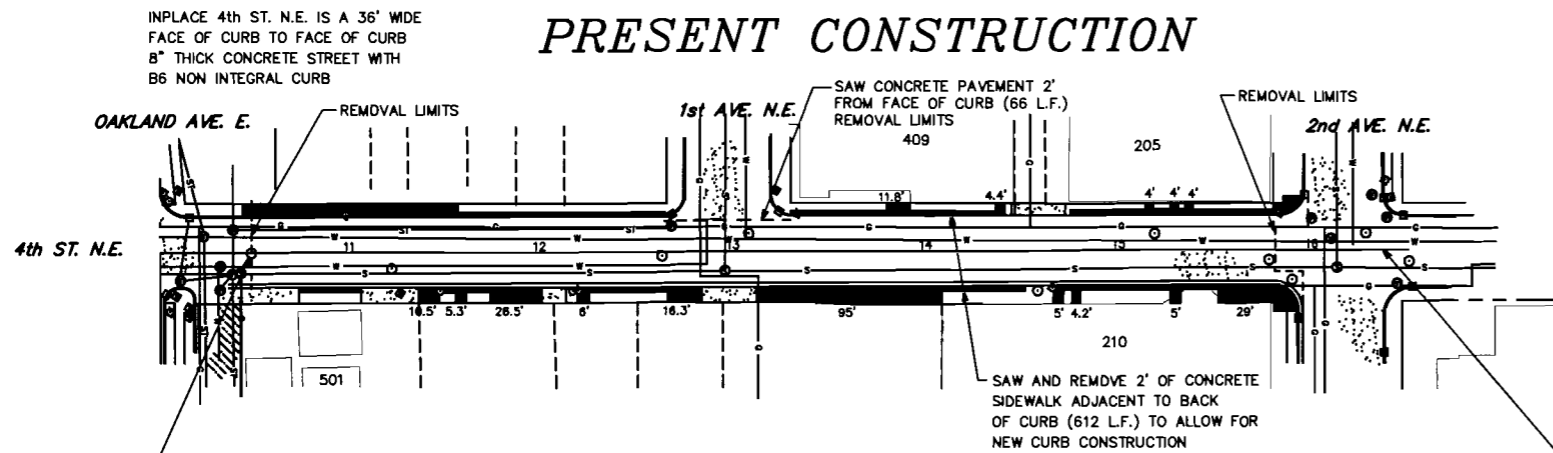
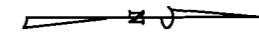




PRESENT CONSTRUCTION



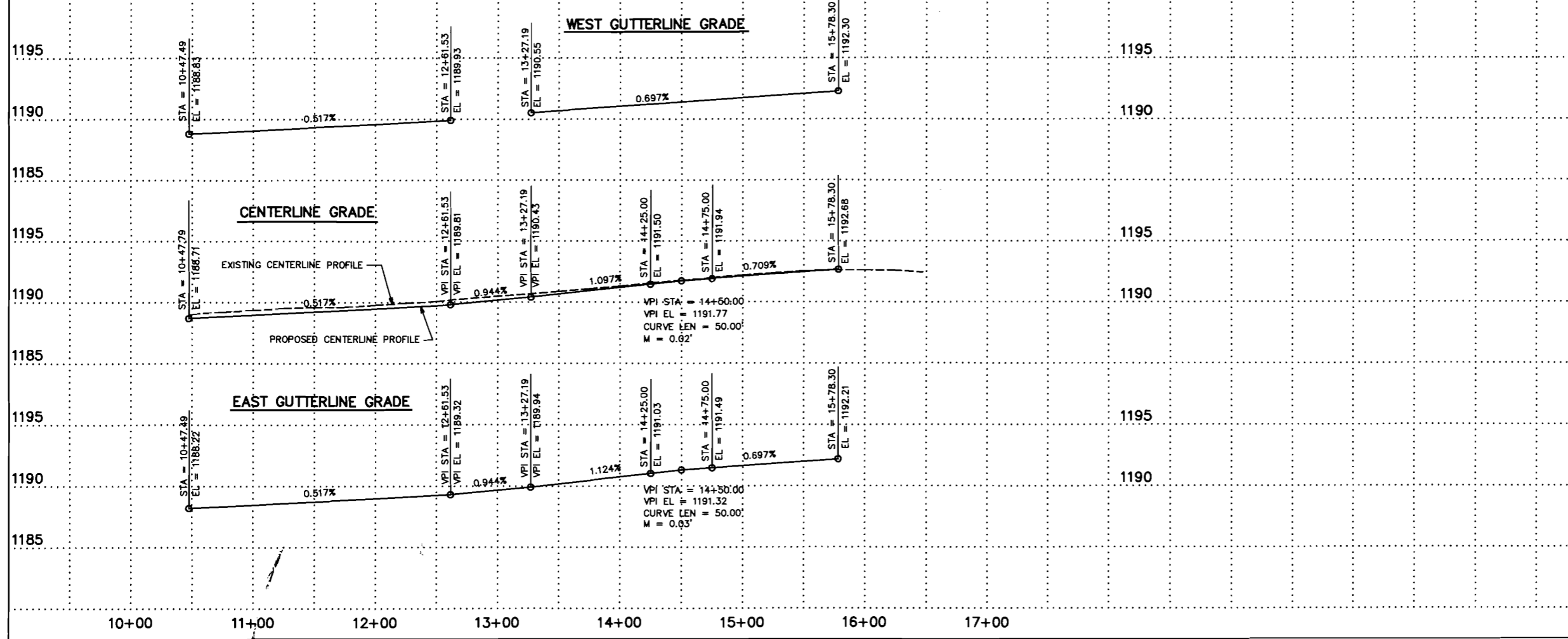
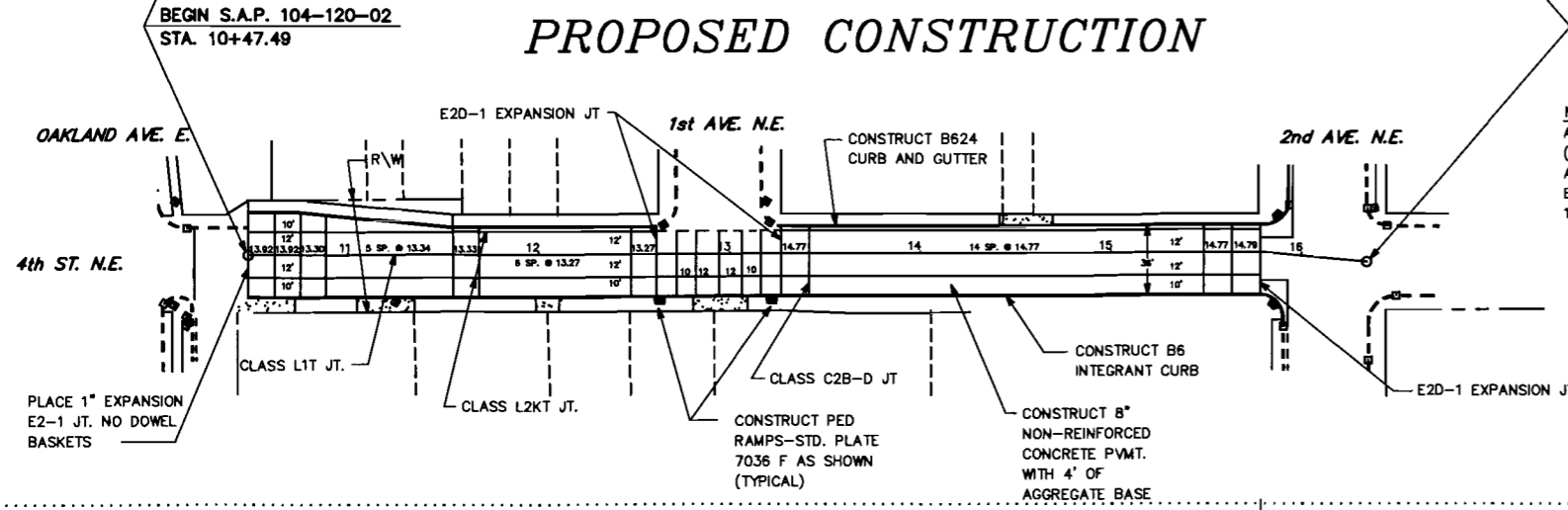
- CONCRETE INDRIVES
- BITUMINOUS INDRIVES
- REMOVE AND REPLACE CONCRETE SIDEWALK



NOTES

1. 1/2" BITUMINOUS FELT EXPANSION WILL BE REQUIRED ON SDWK. AND CURB SIDES OF CONCRETE INDRIVES OR SDWK.
2. FINAL ADJUSTMENT OF CATCH BASINS AND MANHOLES WILL BE BY THE CONTRACTOR. ALL NECESSARY REPAIRS TO THESE STRUCTURES WILL BE PERFORMED BY THE CITY OF AUSTIN UNLESS DAMAGE WAS CAUSED BY THE CONTRACTOR. CONTRACTOR SHALL FURNISH ADJUSTING RINGS. (INCIDENTAL)
3. SWING ALL RADII TO FACE OF CURB AT GUTTERLINE AS STAKED IN THE FIELD BY THE ENGINEER.
4. SOD OR SEED AREAS BETWEEN BACK OF CURB AND SDWK. OR R/W LINE AS DIRECTED BY THE ENGINEER.
5. REMOVE ALL CONC. PVMT, INDRIVES, SIDEWALK AND BITUMINOUS INDRIVES AS DIRECTED BY THE ENGINEER.
6. CONSTRUCT INDRIVES SIDEWALKS AND ENTRANCE WALKS AS SHOWN OR AS DIRECTED BY THE ENGINEER.
7. MODIFIED B624 C & G OR INTEGRAL CURB TO BE USED AT ALL RADII AND AREAS ABUTTING SIDEWALK.
8. EXTREME CARE SHALL BE USED AROUND EXISTING TREES AND POWER POLES DURING CURB AND SOD PLACEMENT.

PROPOSED CONSTRUCTION



BENCH MARKS

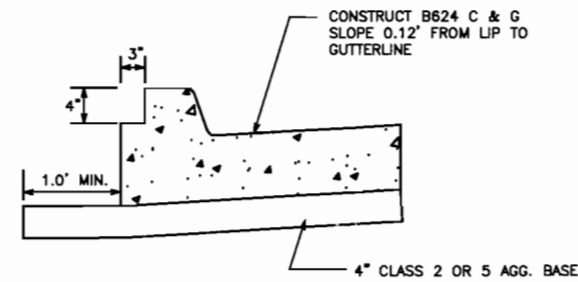
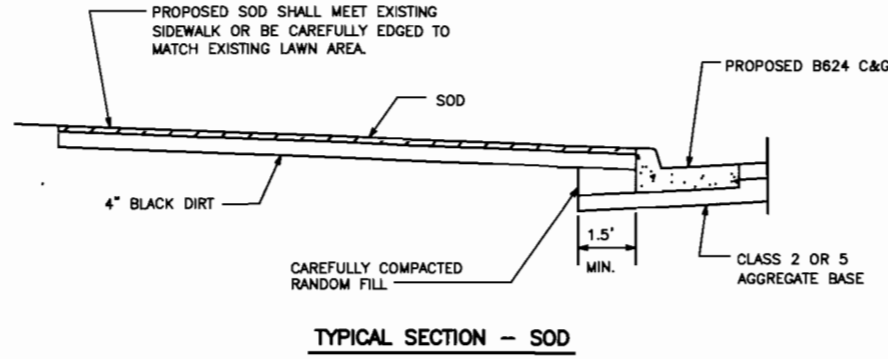
- 1195.835 T.A.F.H. - N.W. CORNER 4th ST. N.E. / 2nd AVE. N.E.
- 1190.11 TOP CONC. STEP (SDWK) NEXT TO N.W. CORNER BUDGET OIL BLDG
- 1190.08 2' x 2' x 4' CONC. SIGN BASE N.W. CORNER DOUBLE K LOT

CITY OF AUSTIN, MINNESOTA		
STREET RECONSTRUCTION - 4th ST. N.E.		
PROJECT NO. 104-120-02	I hereby certify that this plan, specification or report was prepared by me or under my direct supervision and that I am a duly Licensed Professional Engineer under the laws of the State of Minnesota.	SHEET 9 OF 13
C.P. 11-A-05		
Date		Asst. City Engineer Lic. No. 43093

HOT POUR SEAL CHART

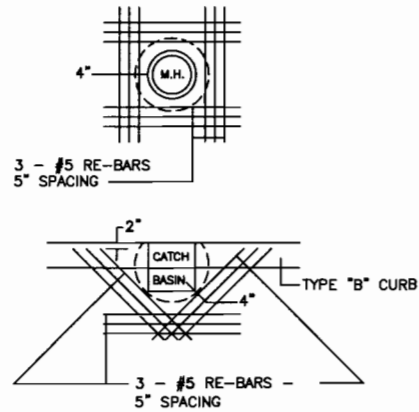
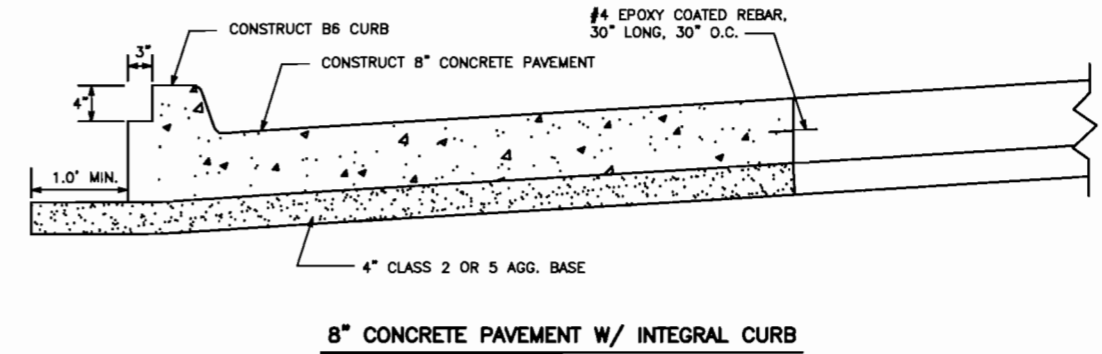
JOINT WIDTH (inches)	SEALANT BEAD THICKNESS (inches)	* BACKER ROD DIAMETER (inches)	MINIMUM JOINT DEPTH (inches)	** ESTIMATED QUANTITY (feet/gallon)	** ESTIMATED QUANTITY (lb./lin. ft.)
a	b	c	d		
1/4	1/4	3/8	1 1/16	268	0.035
3/8	3/8	1/2	1 5/16	119	0.079
1/2	1/2	5/8	1-3/16	67	0.140
5/8	5/8	3/4	1-7/16	43	0.219
3/4	3/4	7/8	1-11/16	30	0.316
7/8	7/8	1	1-15/16	22	0.430
1	1	1-1/8	2-3/16	17	0.562
1-1/8	1-1/8	1-1/4	2-7/16	13	0.711
1-1/4	1-1/4	1-3/8	2-11/16	11	0.877
1-3/8	1-3/8	1-1/2	2-15/16	9	1.062
1-1/2	1-1/2	1-5/8	3-3/16	7	1.264
1-5/8	1-5/8	1-3/4	3-7/16	6	1.483
1-3/4	1-3/4	1-7/8	3-11/16	5	1.720
1-7/8	1-7/8	2	3-15/16	5	1.974

* Minimum backer rod diameter
 ** Volumes will vary depending on joint design and joint irregularities.



MODIFIED B624 C & G

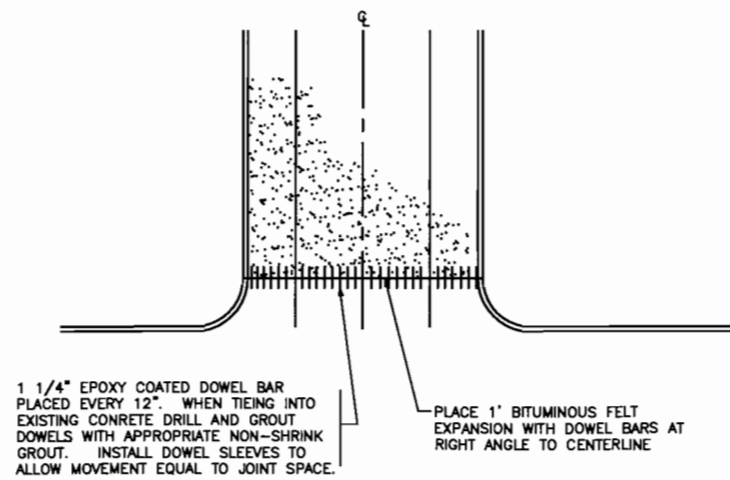
MODIFIED B624 C & G TO BE USED AT ALL RADIUS AND AREAS WHERE SIDEWALK ABUTS CURB AND GUTTER.



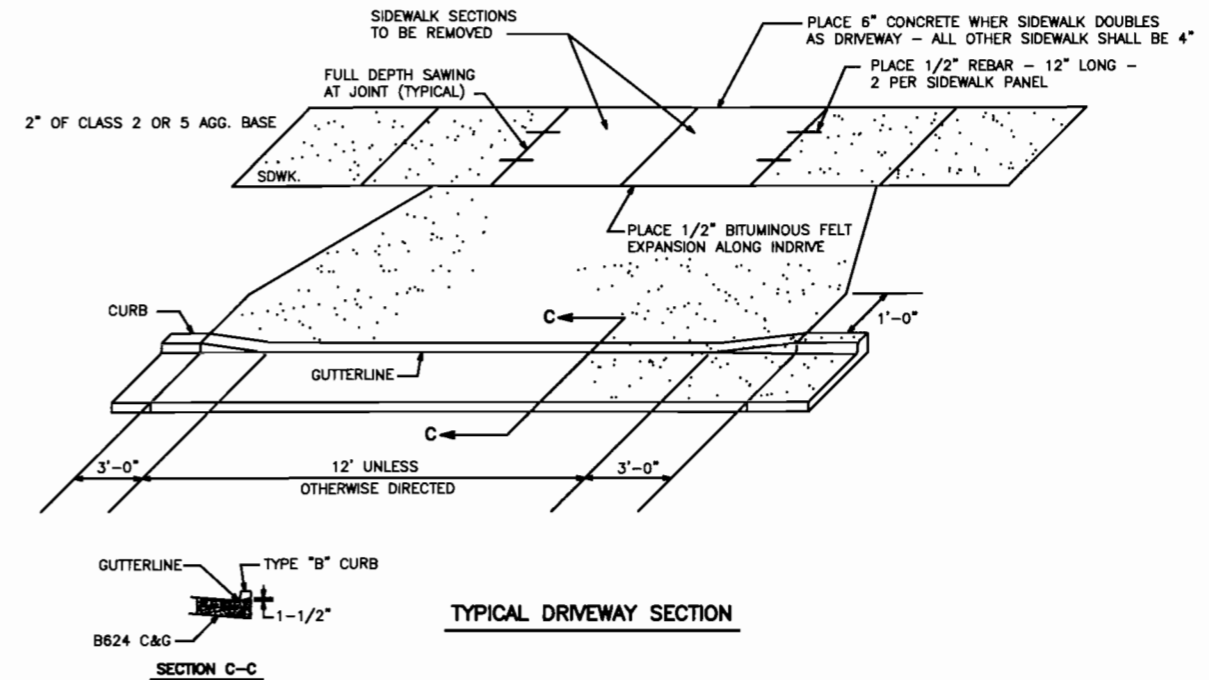
REINFORCEMENT AT CATCH BASINS AND MANHOLES

NOTES

- 1) RE-BARS SHALL BE NO. 5 x 6\" DEFORMED AND SHALL MEET THE REQUIREMENTS OF AASHTO M-31 GRADE 40.
- 2) CATCH BASINS USE 56.3 LBS. MANHOLES USE 75.0 LBS.
- 3) RE-BAR COST & PLACEMENT SHALL BE INCIDENTAL TO PAYMENT FOR PAVEMENT PLACED.
- 4) RE-BARS SHALL BE PLACED 4\" ABOVE BOTTOM OF CONCRETE.
- 5) RE-BARS SHALL BE EPOXY COATED.



TYPICAL EXPANSION JOINT DETAIL



CITY OF AUSTIN, MINNESOTA DETAILS / HOT POUR SEAL CHART		
PROJECT NO. S.A.P. 104-116-03 104-117-06 104-120-02	I hereby certify that this plan, specification or report was prepared by me or under my direct supervision and that I am a duly Licensed Professional Engineer under the laws of the State of Minnesota. Asst. City Engineer Date _____ Lic. No. 43093	SHEET 5 OF 13