



Map of CS# LIMITS:

0 1/2 1 2
Mile

CONSTRUCTION PROJECT LOG

Prepared by
Office of Transportation System Management

Last updated on: 10-12-2022

Control Section 8603

TRUNK HIGHWAY: MN25
COUNTY: Wright
DISTRICT: 3 (Brainerd)
LIMITS:

JCT US-12 to Carver-Wright County Line
Ref. Pt. 042+00.050 - 048+00.377

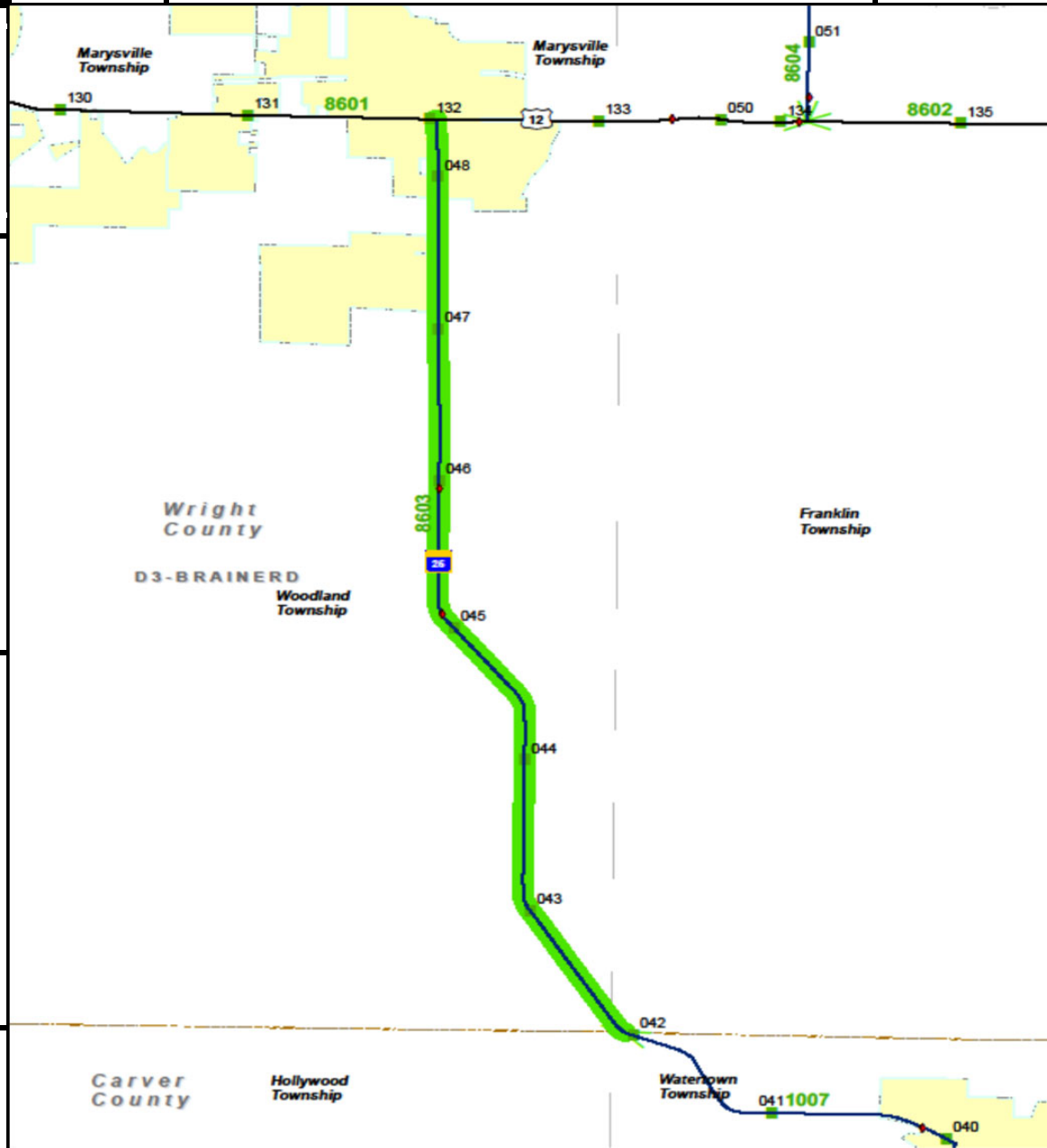
NOTES: CONTROL SECTION NOTES FROM SDW

Symbology:

Stick Map Legend				
Highway	State-Aid	Non State-Aid	City Limit	Bridge
			■ ■ ■ ■ ■ ■ ■ ■	◆

DISCLAIMER: If you encounter broken hyperlinks, please fill out Data Practice Form:

<http://www.dot.state.mn.us/information/datapractices/index.html>

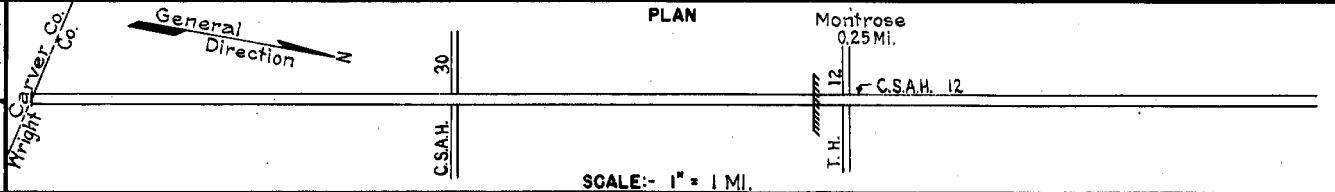


PREPARED BY
HIGHWAY PLANNING SURVEY
IN COOPERATION WITH
U. S. PUBLIC ROADS ADMINISTRATION

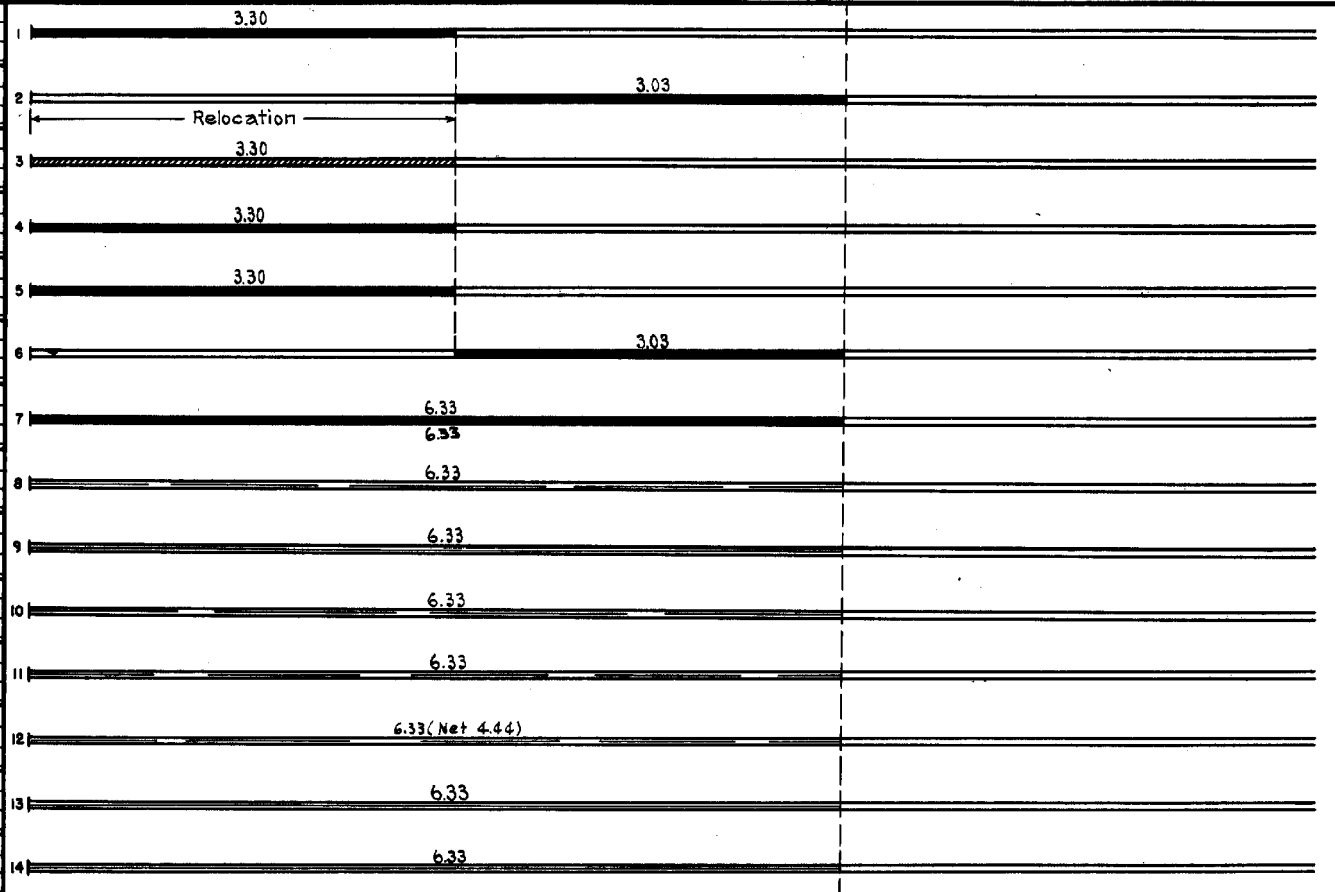
STATE OF MINNESOTA
DEPARTMENT OF HIGHWAYS
ROAD LIFE STUDIES
CONSTRUCTION PROJECT LOG RECORD

CONTROL SECTION 8603
TRUNK HIGHWAY 25
COUNTY Wright
DISTRICT 35A

LIMITS: S. Co. Line - W. Jct. T.H. 12 in Montrose



YEAR BUILT	PROJECT N°	DESCRIPTION			CODE N°
		TYPE	WIDTH	THICKNESS	
		Earth	22'		No Record of Constr.
		Gravel	26' 1/2"		No Record of Constr.
(1)					
1926	25-25-25	Grading	30'		Maint. Dept.
(1)					
1927	25-25-25	Gravel	20' 1/2"		Maint. Dept.
(1)					
1933	25-25-25	Tar Tr. Gravel	26' 1"		Maint. Dept.
		Tar Tr. Gravel	26' 1"		Maint. Dept.
1937 A.F.E. 8		Stab Sand Base	26' 6"		
1938 1938 A.F.E. 38		Bit. Surf. Treat.	26' 3/4"		Maint. Dept.
M		Spot Treat.			Tar. 257 Gal./Mi.
1940 A.F.E. 48		Bit. Surf. Repair			Grav. 8 C.Y./Mi. Maint. Dept.
(Dist. 7)					
M		Spot Treat.			RT-6 & RG 3.47286/Mi.
1941 A.F.E. 55		Bit. Surf. Repair			Agg. 96 C.Y./Mi.
A.F.E. 14		& Bit. Seal Coat	24'		Maint. Dept.
M		Subgr. Treat. (Spots)			RT-6, 1469 Gal./Mi.
1943 A.F.E. 4		Spot Treat.	27'		Grav. 582 C.Y./Mi.
		Bit. Surf. Repair			Maint. Dept.
M		Spot Treat.			RT-6, 1820 Gal./Mi.
1945 A.F.E. 4		Bit. Surf. Repair	24'		Grav. 78 C.Y./Mi. Maint. Div.
M		Spot Sand Lifts	27' 4"-6"		SC3, 42719 Gal.
1946 A.F.E. 4		Spot Treat.			Agg. 1911 C.Y.
		Bit. Surf. Repair	27'		
M					MC-3, 48806 Gal.
1948 A.F.E. 4		Bit. Surf. Repair	27'		Agg. 2236 C.Y.
M					RCS-0, 8716 Gal.
1949 A.F.E. 4		Bit. Fog Seal	24'		Agg. 173 C.Y.



YEARS FROM	TOTAL MILES TO	UNINCORPORATED		INCORPORATED		RURAL		URBAN	
		RDWY. MI.	BR. MI.	RDWY. MI.	BR. MI.	RDWY. MI.	BR. MI.	RDWY. MI.	BR. MI.
1921	6.33	6.08	0.00	0.25	0.00	6.33	0.00	0.00	0.00

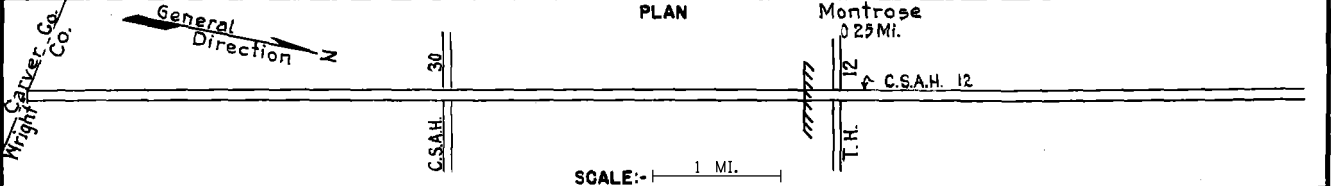
REMARKS: Layout is to scale as of 1926
(1) This work not done under this project number but lies within the limits of this project.

PREPARED BY
HIGHWAY PLANNING SURVEY
IN COOPERATION WITH
U.S. PUBLIC ROADS ADMINISTRATION

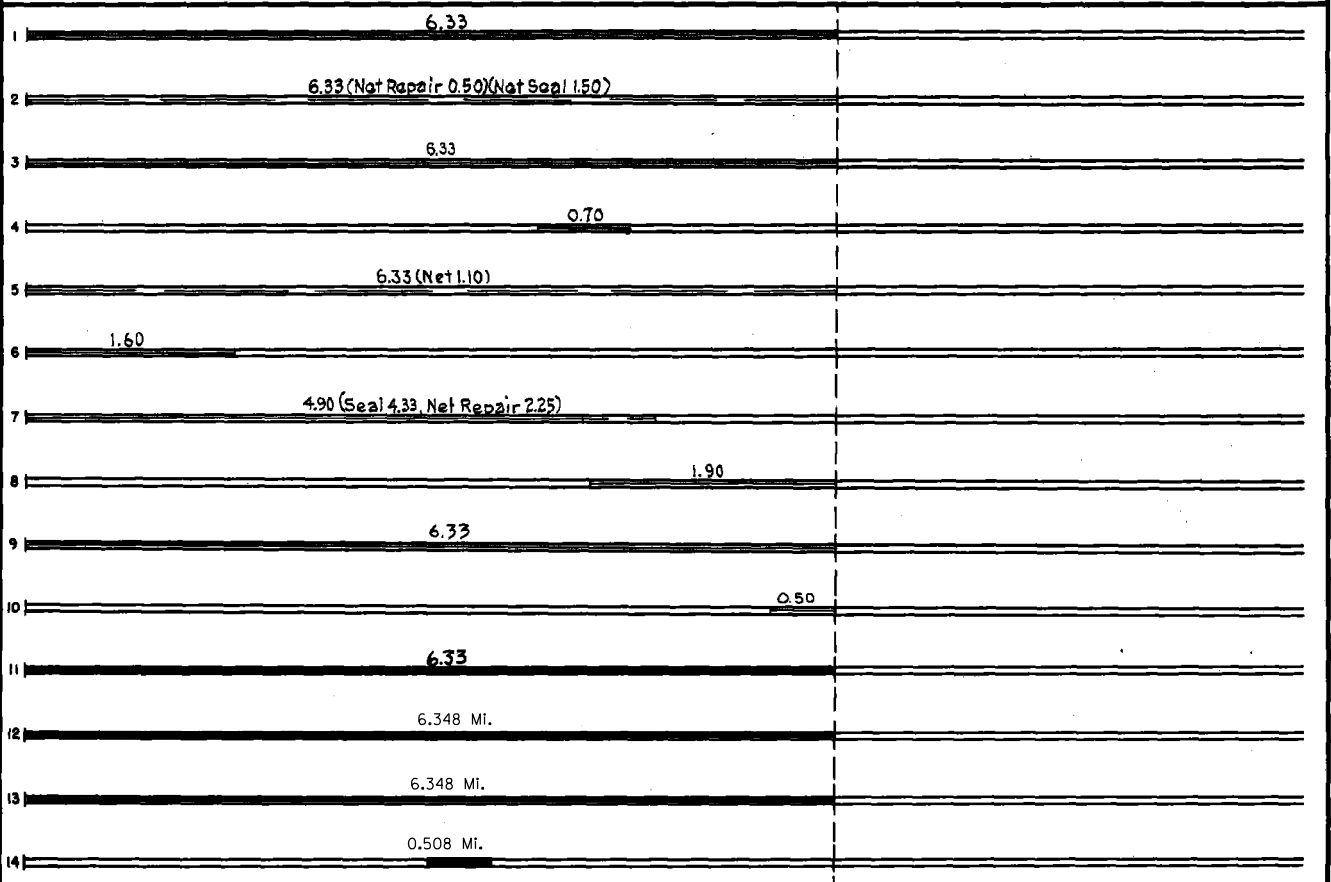
STATE OF MINNESOTA
DEPARTMENT OF HIGHWAYS
ROAD LIFE STUDIES
CONSTRUCTION PROJECT LOG RECORD

CONTROL SECTION 8603
TRUNK HIGHWAY 25
COUNTY Wright
DISTRICT (3)5A

LIMITS: S. Co. Line - W. Jct. T.H. 12 in Montrose
Ref. Pt. 042+00.047 - 048+00.383



YEAR BUILT	PROJECT N ^o	DESCRIPTION			CODE N ^o
		TYPE	WIDTH	THICKNESS	
M 1952	A.F.E. 4	Bit. Surf. Repair	20' 24"		1
M 1953	A.F.E. 604	Spot Treat Bit. Surf. Repair Spot Light Bit. Seal	24'		2
M 1954	A.F.E. 605	Light Bit. Seal	20' 22"		3
M 1955	A.F.E. 604	Bit. Surf. Repair			4
M 1956	A.F.E. 821	Spot Subqr. Corr.	30'		5
M 1956	A.F.E. 604	Spot Treat Bit. Surf. Repair	24'		5
M 1957	A.F.E. 604	Bit. Surf. Repair	24'		6
M 1958	A.F.E. 604 A.F.E. 605	Spot Treat Bit. Surf. Repair Light Seal Coat	24'		7
M 1960		Bit. Surf. Repair	24'		8
M 1965	C	Light Bit. Seal	24'		9
M 1966	C	Light Bit. Seal	24'		10
C 1970	8603-01	Pl. Mix Bit. Surf. Gravel Shldrs.	28' 2 1/2"		11
C 1988	8603-04	Bit. Overlay	20' 1 1/2"		12
C 2001	8603-05	Milling Bit. Overlay	24' 3" 24' 4"		13
C 2005	8603-06	Grading Bit. Surfacing Agg. shldrs	36' 26' 6" 3' 6"		14



YEARS		TOTAL MILES	UNINCORPORATED		INCORPORATED		RURAL		URBAN	
FROM	TO		RDWY. MI.	BR. MI.	RDWY. MI.	BR. MI.	RDWY. MI.	BR. MI.	RDWY. MI.	BR. MI.

REMARKS: See Sheet No. 1

