



CONSTRUCTION PROJECT LOG

Prepared by
Office of Transportation System Management

Last updated on: 10-7-2022

Control Section 7318

TRUNK HIGHWAY: US71

COUNTY: Stearns

DISTRICT: 3 (Brainerd)

LIMITS:
JCT I-94 to JCT MN-55
Ref. Pt. 148+00.097 - 167+00.274

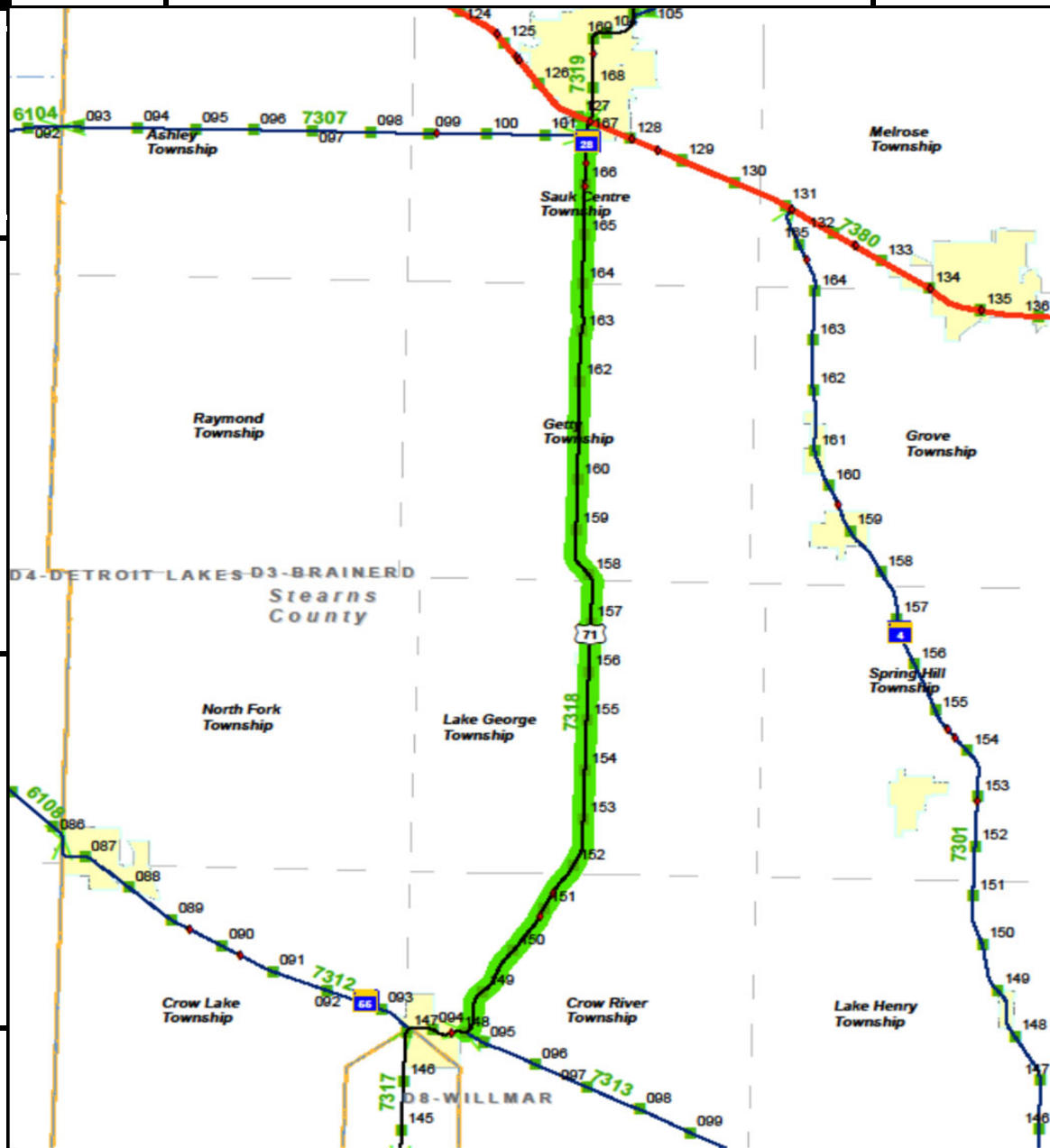
NOTES: CONTROL SECTION NOTES FROM SDW

Symbology:

Stick Map Legend				
Highway	State-Aid	Non State-Aid	City Limit	Bridge
			■ ■ ■ ■ ■ ■ ■ ■	◆

DISCLAIMER: If you encounter broken hyperlinks, please fill out Data Practice Form:

<http://www.dot.state.mn.us/information/datapractices/index.html>

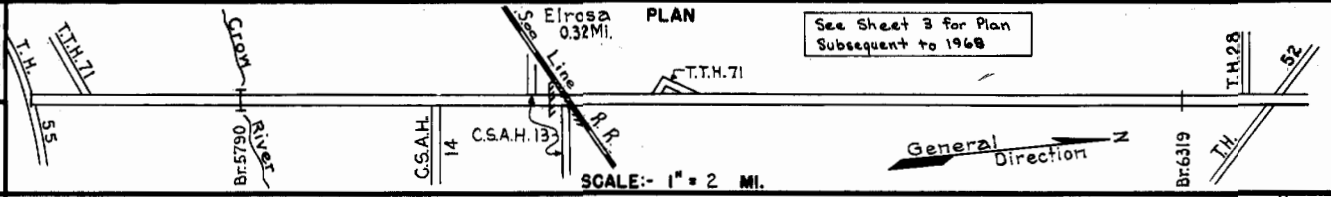


PREPARED BY
HIGHWAY PLANNING SURVEY
IN COOPERATION WITH
U.S. PUBLIC ROADS ADMINISTRATION

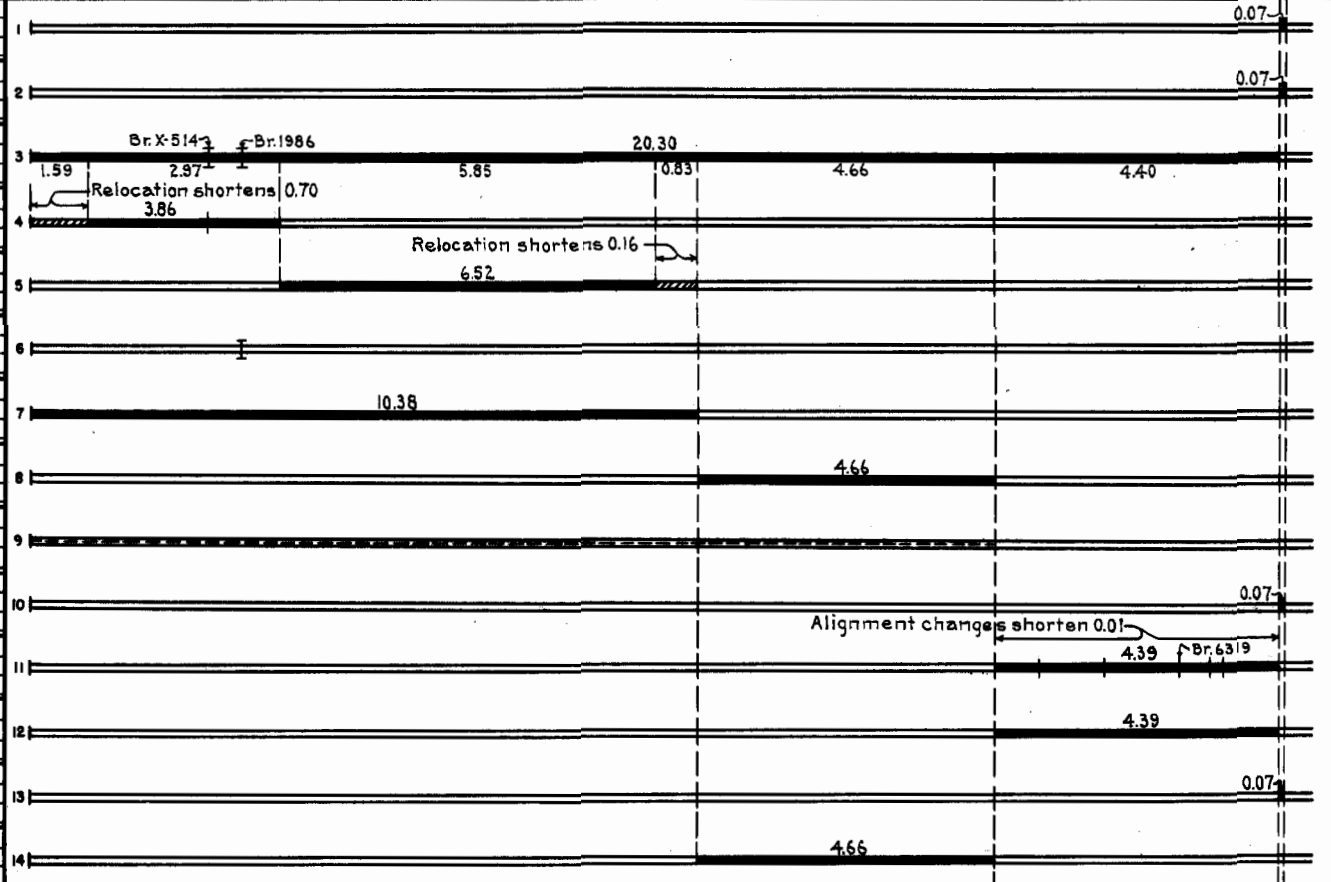
STATE OF MINNESOTA
DEPARTMENT OF HIGHWAYS
ROAD LIFE STUDIES
CONSTRUCTION PROJECT LOG RECORD

CONTROL SECTION 7318
TRUNK HIGHWAY 71
COUNTY Stearns
DISTRICT 3B

LIMITS: E. Jct. T.H. 55 - Jct. T.H. 94



YEAR BUILT	PROJECT N ^o	DESCRIPTION			CODE N ^o
		TYPE	WIDTH	THICKNESS	
1923	71-28-23B	Grading Gravel	30'	4 1/4"	
	(1)				
1931	71-28-23B	Oil Tr. Gravel	28'	1"	
		Gravel	25 1/2'	2 1/4"	
		Br. X-514 & 1986	1618		
1937	71-141-22-1	Grading Stab. Agg. Br. 8545	32'	3"	
1937	71-141-22-1&2	Grading Stab. Agg.	32'	4"	
1938	71-141-22-1	Br. 5790	30'		
1938	7318-01A&B	Mixed Bitum.	24'	1 1/4"	
	71-141-23-1	Grading	32'		
1938	7318-03	Stab. Agg.	24'	6"	
	71-141-22-1				
1938	71-141-22-2 71-141-23-1	Seeding			
1938	A.F.E. 33	Stab. Gravel	30'	4"	
	(2)				
1938	7318-05 7318-04	Grading Br. 6319 & 4 other Mono. Culv.			
1938	A.F.E. 43	Gravel	32'	1"	
1939	A.F.E. 17	Mixed Bitum.	26'	1"	
1939	7318-02	Mixed Bitum.	24'	1 3/4"	



YEARS		TOTAL MILES	UNINCORPORATED		INCORPORATED		RURAL		URBAN	
FROM	TO		RDWY. MI.	BR. MI.	RDWY. MI.	BR. MI.	RDWY. MI.	BR. MI.	RDWY. MI.	BR. MI.
1923	1933	0.07	0.00	0.00	0.07	0.00	0.00	0.00	0.07	0.00
1934	1936	20.37	19.01	0.02	1.34	0.00	20.28	0.02	0.07	0.00
1937	1937	19.51	19.10	0.01	0.40	0.00	19.43	0.01	0.07	0.00
1938	1955	19.50	19.10	0.01	0.39	0.00	19.42	0.01	0.07	0.00
1956	1967	19.37	19.04	0.01	0.32	0.00	19.36	0.01	0.00	0.00
1968		19.22	18.85	0.01	0.36	0.00	18.85	0.01	0.00	0.00

REMARKS: Layout is to scale as of 1938

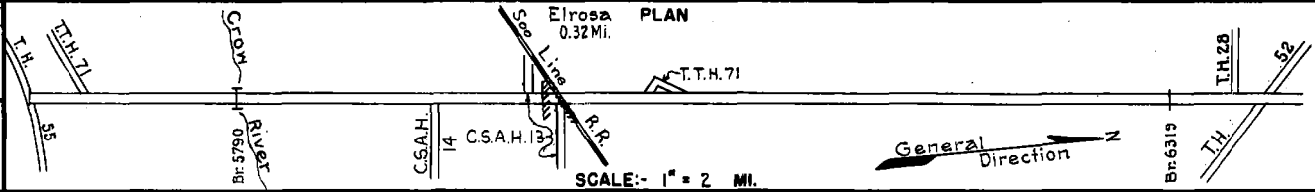
(1) This work not done under this project number but lies within the limits of this project. (2) Not completed until 1939.

PREPARED BY
HIGHWAY PLANNING SURVEY
IN COOPERATION WITH
U. S. PUBLIC ROADS ADMINISTRATION

STATE OF MINNESOTA
DEPARTMENT OF HIGHWAYS
ROAD LIFE STUDIES
CONSTRUCTION PROJECT LOG RECORD

CONTROL SECTION 7318
TRUNK HIGHWAY 71
COUNTY Stearns
DISTRICT 32

LIMITS: E. Jct. T.H. 55 - Jct. T.H. 94



YEAR BUILT	PROJECT N°	DESCRIPTION			CODE N°
		TYPE	WIDTH	THICKNESS	
C	1940 7318-08	Seeding			
					Maint. Dept.
C	1940 7318-07	Bit. Surf. Treat. Stab. Gravel Base	24' 32'	3/4" 5"	
M	1940 A.F.E. 14	Bit. Seal Coat			R.O. 3593 Gal./Mi. Agg. 104 C.Y./Mi. Maint. Dept.
M	1941 A.F.E. 32	Spot Treat. Bit. Surf. Repair Frost Boil Exc.			RT-3, 216 Gal./Mi. Grav. 106 C.Y./Mi. Maint. Dept.
C	1941 7318-11	Mixed Bit.	24'	1 1/2"	
M	1944 7318-13	Base Repair (Spots) Mixed Bit. (Spots)	26'	1"	
M	1945 A.F.E. 4	Spot Treat. Bit. Surf. Repair	26'		Bit. 821 Gal./Mi. Grav. 37 C.Y./Mi. Maint. Div.
M	1946 A.F.E. 4	Spot Treat. Bit. Surf. Repair	26'		RT-4, 1375 Gal. Agg. 66 C.Y.
M	1947 A.F.E. 4	Spot Treat. Bit. Surf. Repair	24'		SC-3, 51724 Gal. Agg. 2510 C.Y.
C&M	1948 A.F.E. 4 A.F.E. 22	Spot Treat Bit. Surf. Repair Install Culvert			SC-3, 30062 Gal. Agg. 2226 Tons 18" x 64" C.M.
M	1949 A.F.E. 4	Spot Treat. Bit. Surf. Repair	24'		RT-4 & SC-3, 25839 Gal. Agg. 1397 C.Y.
M	1950 A.F.E. 4	Spot Treat. Bit. Surface Repair	24'		SC-3, 41556 Gal. Agg. 2615 C.Y.
M	1951 A.F.E. 4	Spot Treat. Bit. Surf. Repair	24'		SC-4, 9996 Gal. Agg. 637 C.Y.
C	1953 7318-17	Spot Sand-Grav. Subbase Gravel Base Mixed Bit.	32' 24'	6" - 15" 1"	

1			
2		4.39	
3		15.04	
4		14.84	
5		4.39	
6		7.90	
7		13.50	
8		14.06 (Net 0.14)	
9		19.50 (Net 4.93)	
10		19.50 (Net 3.18)	
11		19.50 (Net 2.73)	
12		19.50 (Net 5.21)	
13		19.50 (Net 1.23)	
14		19.50	0.13

YEARS FROM	TO	TOTAL MILES	UNINCORPORATED		INCORPORATED		RURAL		URBAN	
			RDWY. MI.	BR. MI.	RDWY. MI.	BR. MI.	RDWY. MI.	BR. MI.	RDWY. MI.	BR. MI.

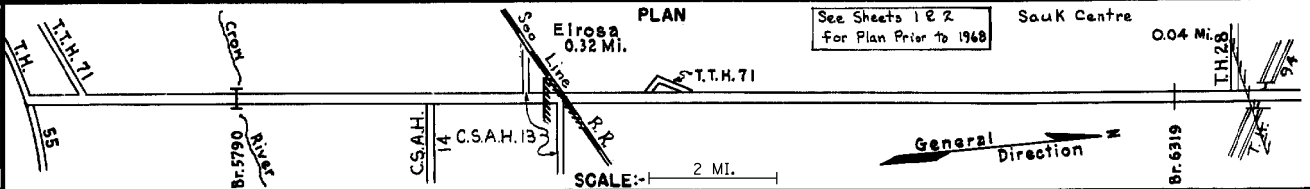
REMARKS: See Sheet No. 1

PREPARED BY
HIGHWAY PLANNING SURVEY
IN COOPERATION WITH
U.S. PUBLIC ROADS ADMINISTRATION

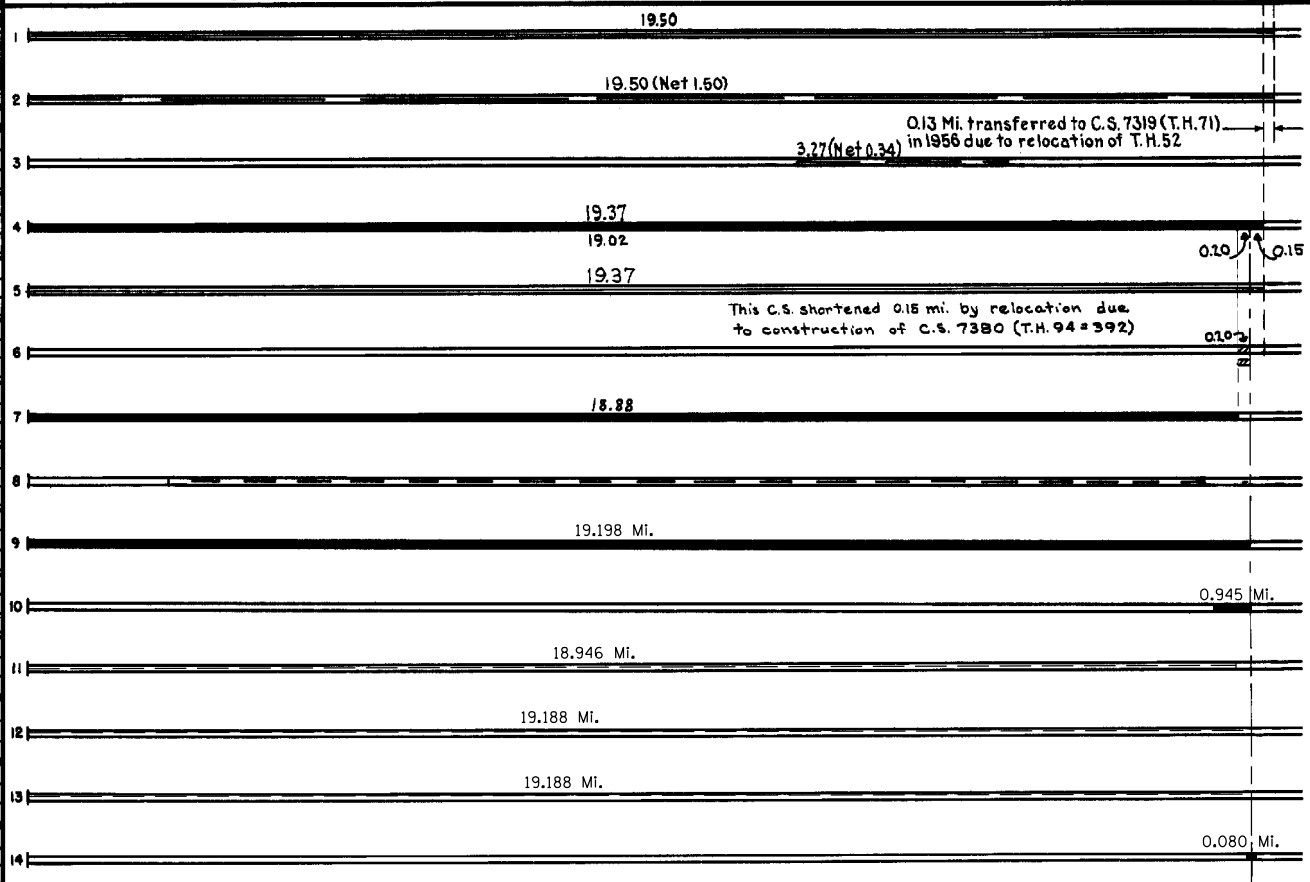
STATE OF MINNESOTA
DEPARTMENT OF HIGHWAYS
ROAD LIFE STUDIES
CONSTRUCTION PROJECT LOG RECORD

CONTROL SECTION 7318
TRUNK HIGHWAY 71
COUNTY Stearns
DISTRICT 3B

LIMITS: E. Jct. T.H. 55 - Jct. T.H. 94
Ref. Pt. 148+00.097 - 167+00.295



YEAR BUILT	PROJECT N°	DESCRIPTION			CODE N°
		TYPE	WIDTH	THICKNESS	
M 1954	A.F.E. 605	Fog Seal (Mi. Pt. 1650-1950) Light Bit. Seal (1950 Mi.)	24'	2 1/2"	RC-2 5 MCI, 30174 Gal. Agg. 988 C.Y.
M 1956	A.F.E. 604	Spot Treat Bit. Surf. Repair	24'		MC-2, 15934 Gal. Agg. 1170 Tons
M 1957	A.F.E. 604	Spot Treat Bit. Surf. Repair	24'		MC-3, 2785 Gal. Agg. 238 Tons
C 1958	7318-22	Plant Mix Bit.	24'		
M 1960		Light Bit. Seal	25'		RC-2, 33122 Gal. Agg. 1260 C.Y.
C 1968	7380-13	Grading - Sub-base Gr. base & Rd. Mix. Bit. Pl. Mix. Bit. Surf.	10" 4 1/2" 2 1/2"	5" 2 1/2" 3"	
C 1979	7318-28	Bit. SURFACING Bit. SHOULDER RIGHT TURN LANES	24' 6' 6'	2 1/2" VAR. VAR.	
C 1983	7300-05	Guardrail Improvements			8 Sections
C 1996	7318-31	Milling Bit. Overlay	24'	3"	Spec. 2341
C 1996	7318-30	Milling Bit. Overlay	24'	1 1/2"-3"	Spec. 2341
M 1999	7318-99050	Major Crack Repair			
M 2000	8823-11	Agg. Seal			Fine Agg. # 2
S 2005	8823-65	Bit. Seal Coat			FA-3
		Bit. Mill & Overlay Replace Guardrail	66'	2"	Spec 2360 Spec B8338



YEARS FROM	YEARS TO	TOTAL MILES	UNINCORPORATED		INCORPORATED		RURAL		URBAN	
			RDWY. MI.	BR. MI.	RDWY. MI.	BR. MI.	RDWY. MI.	BR. MI.	RDWY. MI.	BR. MI.

REMARKS: See Sheet No. 1

