



CONSTRUCTION PROJECT LOG
Prepared by
Office of Transportation System Management
Last updated on: 10-13-2022

Control Section 3311

TRUNK HIGHWAY: MN107
COUNTY: Kanabec
DISTRICT: 3 (Brainerd)
LIMITS:

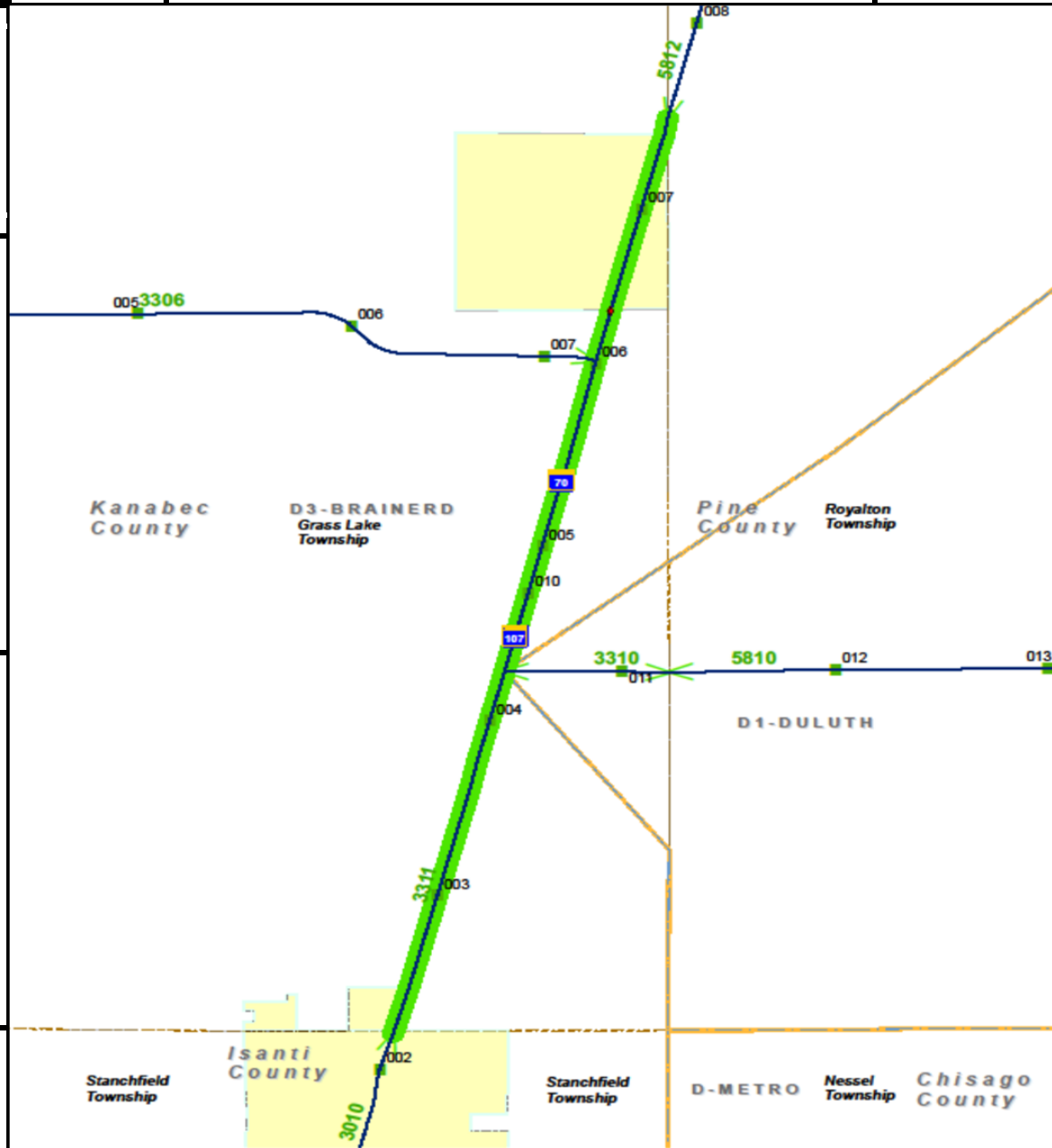
Isanti-Kanabec County Line; CSAH-4 LT to Kanabec-Pine County Line
Ref. Pt. 002+00.212 - 007+00.519

NOTES: CONTROL SECTION NOTES FROM SDW

Symbology:

Stick Map Legend				
Highway	State-Aid	Non State-Aid	City Limit	Bridge
			■ ■ ■ ■ ■ ■ ■ ■	◆

DISCLAIMER: If you encounter broken hyperlinks, please fill out Data Practice Form:
<http://www.dot.state.mn.us/information/datapractices/index.html>

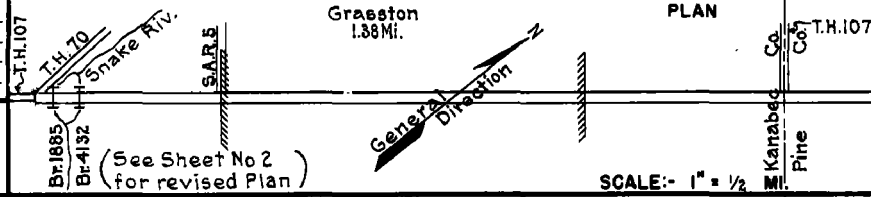


PREPARED BY
HIGHWAY PLANNING SURVEY
IN COOPERATION WITH
U.S. PUBLIC ROADS ADMINISTRATION

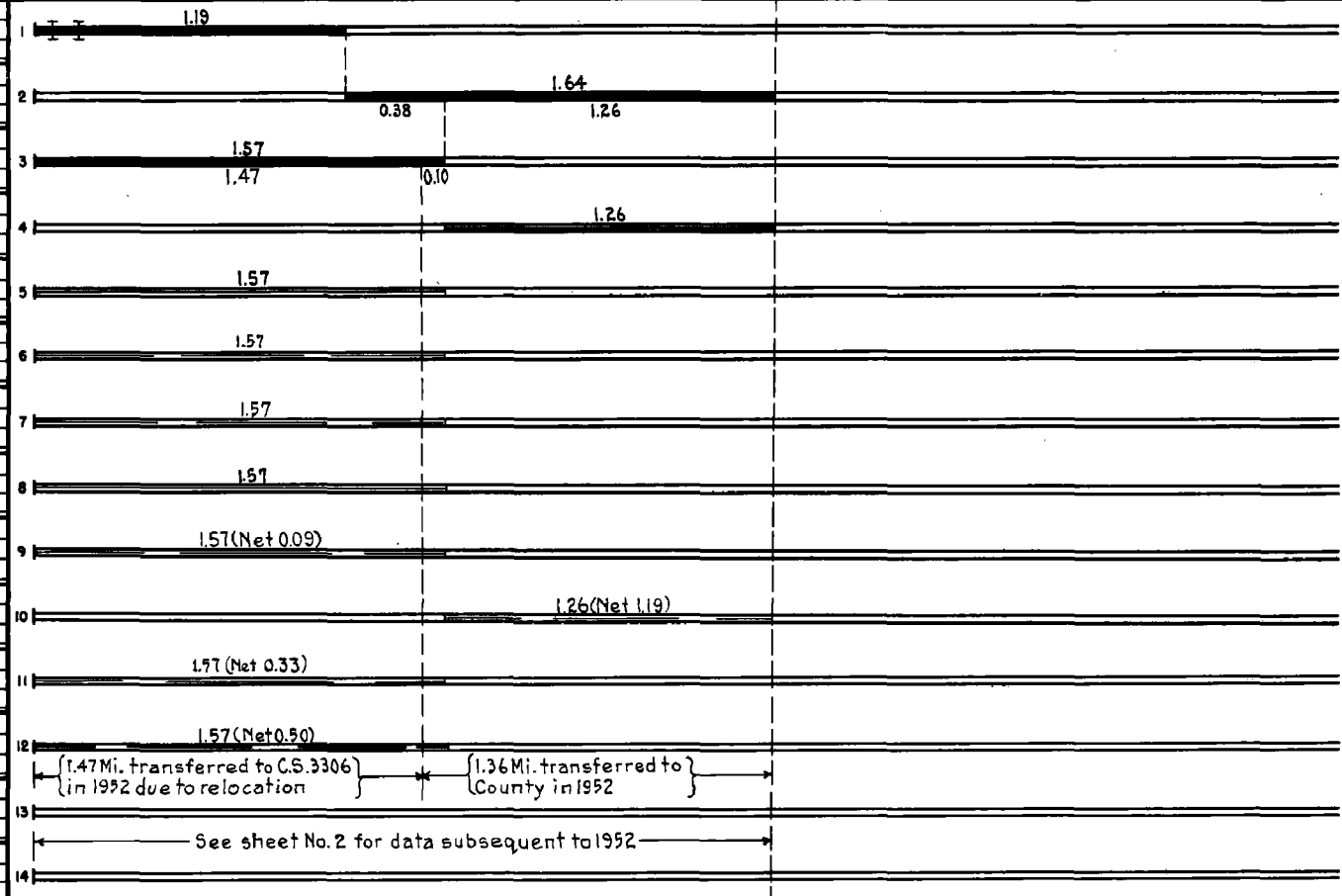
STATE OF MINNESOTA
DEPARTMENT OF HIGHWAYS
ROAD LIFE STUDIES
CONSTRUCTION PROJECT LOG RECORD

CONTROL SECTION 3311
TRUNK HIGHWAY 107
COUNTY Kanabec
DISTRICT 1A

LIMITS: N. Jct. T.H. 70 - E. Co. Line (See Sheet No 2)



YEAR BUILT	PROJECT N ^o	DESCRIPTION			CODE N ^o
		TYPE	WIDTH	THICKNESS	
1923		Grading Gravel	30'	2"	
		Br. 1885 & 4132	72'		
		Grading Gravel	20 7/8'	1 1/2"	
1935		Oil Tr. Gravel	20'	1"	
M					
1940	A.F.E. 57	Regraveling			
M					
1942	A.F.E. 5	Bit. Seal Coat	26'		
M					
1944	A.F.E. 4	Spot Treat. Bit. Surf. Repair	26'		
M					
1945	A.F.E. 4	Spot Treat. Bit. Surf. Repair	26'		
M					
1946	A.F.E. 4	Bit. Surf. Repair	22'		
M					
1948	A.F.E. 4	Spot Treat. Bit. Surf. Repair	24'		
M					
1948	A.F.E. 6	Grav. Resurfacing (Spots)			
M					
1950	A.F.E. 4	Spot Treat. Bit. Surface Repair	24'		
M					
1952	A.F.E. 4	Spot Treat. Bit. Surf. Repair	24'		



YEARS		TOTAL MILES	UNINCORPORATED		INCORPORATED		RURAL		URBAN	
FROM	TO		RDWY. MI.	BR. MI.	RDWY. MI.	BR. MI.	RDWY. MI.	BR. MI.	RDWY. MI.	BR. MI.
1934	1952	2.53	1.41	0.04	1.38	0.00	2.79	0.04	0.00	0.00
See Sheet No. 2										

REMARKS: Layout is to scale as of 1934

PREPARED BY
HIGHWAY PLANNING SURVEY
IN COOPERATION WITH
U.S. PUBLIC ROADS ADMINISTRATION

STATE OF MINNESOTA
DEPARTMENT OF HIGHWAYS
ROAD LIFE STUDIES
CONSTRUCTION PROJECT LOG RECORD

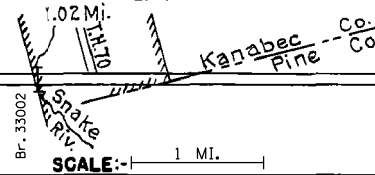
CONTROL SECTION 3311
TRUNK HIGHWAY 107
COUNTY Kanabec
DISTRICT 1A

LIMITS: S. Co. Line - E. Co. Line

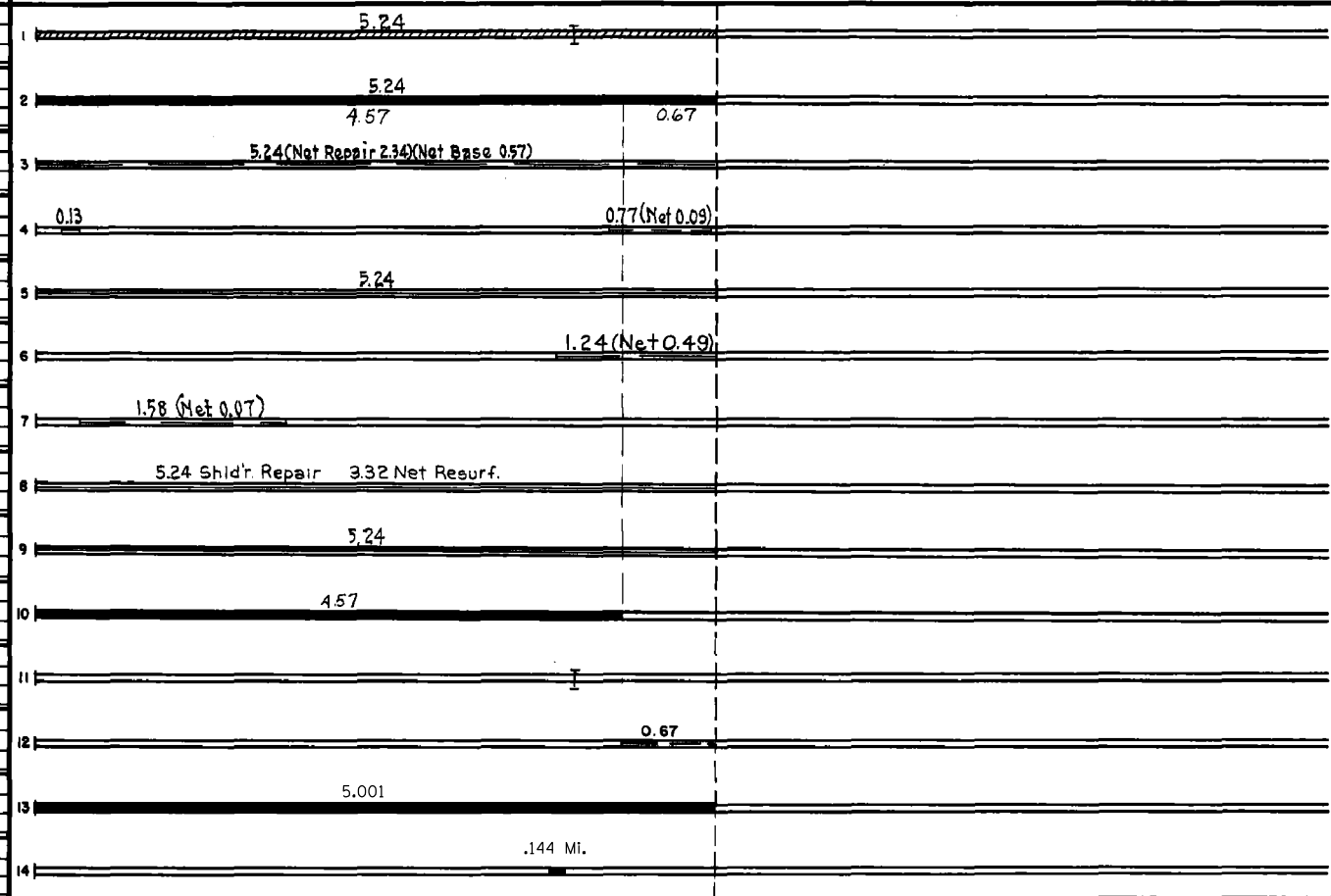
Ref. Pt. 002+00.226 - 007+00.227

Kanabec
County
Co.

Grassston PLAN



YEAR BUILT	PROJECT N ^o	DESCRIPTION				CODE N ^o
		TYPE	WIDTH	THICK-NESS	REMARKS	
C	3311-02	Grading	36'		Upper 1.0' Sand Mat'l.	
1952	3311-04	Gravel	24'		1200 C.Y. / Mi.	
	3311-03	Br. 6419	30'		231' C.D.G.	
C						
1953	3311-05	Bit. Stab. Base (Mixed Bit.)	26'	2"		
M		Spot Stab. Grav. Base	30'		SC4&MG3, 18648 Gal.	
1954	A.F.E. 826	Spot Bit. Surf. Repair	24'		Agg. 1645 Tons	
M		Spot Treat			SG-4, 1818 Gal.	
1956	A.F.E. 604	Bit. Surf. Repair	24'		Agg. 261 Tons	
M		Light Bit. Seal	25'		RG-2, 10382 Gal.	
1957	A.F.E. 605				Agg. 344 C.Y.	
M		Spot Treat			SC-4, 4098 Gal.	
1958	A.F.E. 604	Bit. Surf. Repair	24'		Agg. 343 Tons	
M		Spot Treat			715 Gal. Bit.	
1959	A.F.E. 604	Bit. Surf. Repair	24'		Agg. 28 Ton	
M		Shoulder Repair			Gravel, 6557 Tons	
1960		Spot Bituminous Resurfacing			SC-3&4, 27364 Gal.	
					Agg. 2290 Tons	
M		Bit. Seal Coat	27'		RS-2, 9692 Gal.	
1962					Agg. 340 C.Y.	
C						
1968	3311-06	Pl. Mix. Bit. Surf. Gravel Shldrs.	24'	3"	Bit. Mat'l. 597 Ton 7' Rt. & Lt.	
C						
1982	3311-6419	Deck Repair & Overlay		2"	Br. 6419	
M						
1983	SF	Bit. Surface Repair	24'	1 1/2"	Contract # 4021	
C						
1992	3311-08	Bit. Overlay	24'	1 1/2"	Spec. 2341	
R						
2009	3311-10	Grading Bit. Surfacing	var. 24'		Br. 33002 Spec. 2360	



YEARS FROM	TOTAL MILES TO	UNINCORPORATED		INCORPORATED		RURAL		URBAN	
		ROWY. MI.	BR. MI.	ROWY. MI.	BR. MI.	ROWY. MI.	BR. MI.	ROWY. MI.	BR. MI.
1952	5.24	4.22	0.00	0.98	0.04	5.20	0.04	0.00	0.00

REMARKS: Layout is to scale as of 1952

