



CONSTRUCTION PROJECT LOG
Prepared by
Office of Transportation System Management
Last updated on: 10-7-2022

Control Section 3002

TRUNK HIGHWAY: MN47

COUNTY: Isanti

DISTRICT: 3 (Brainerd)

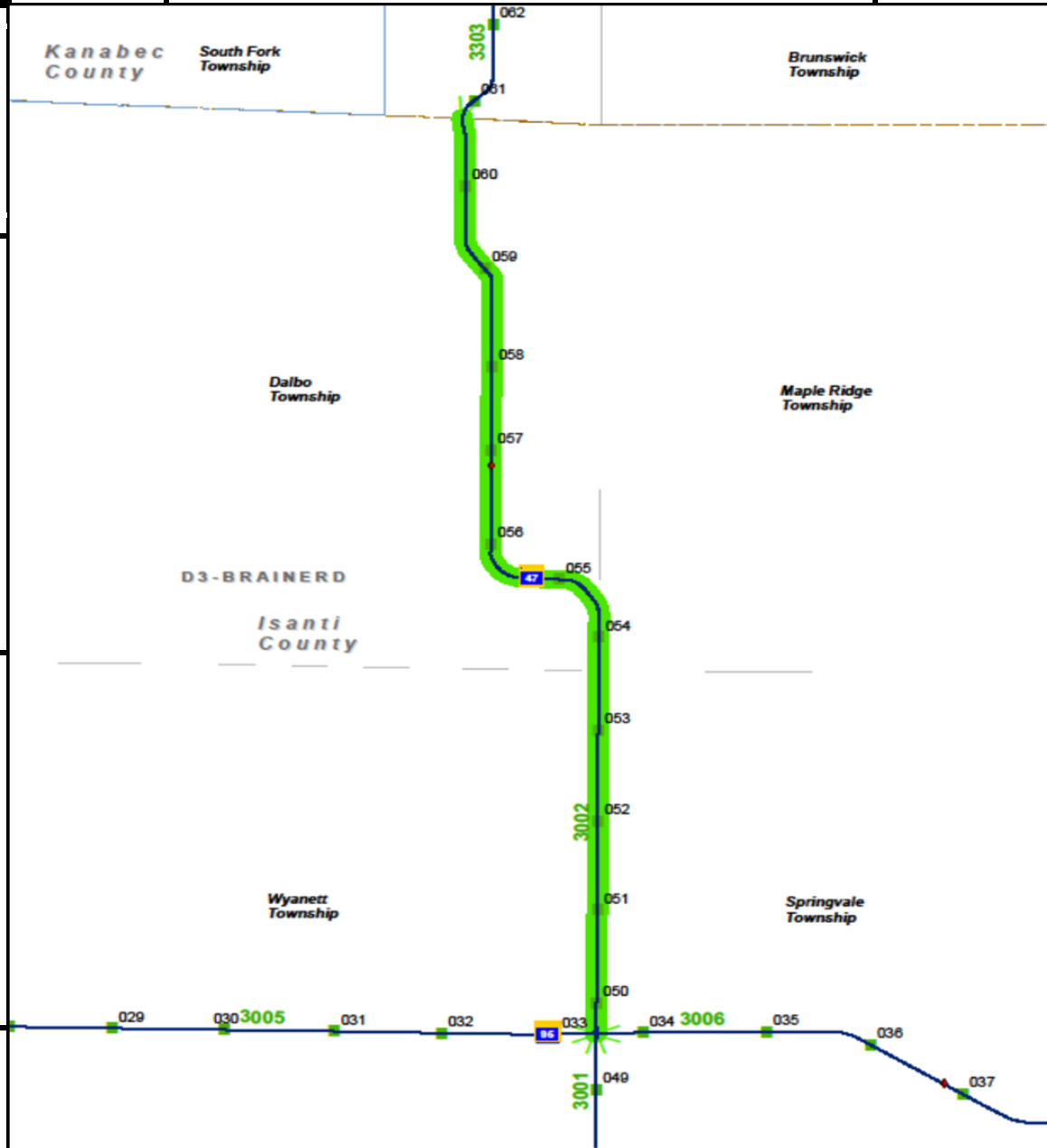
LIMITS:
JCT MN-95 to Isanti-Kanabec County Line
Ref. Pt. 049+00.608 - 060+00.746

NOTES: CONTROL SECTION NOTES FROM SDW

Symbology:

Stick Map Legend				
Highway	State-Aid	Non State-Aid	City Limit	Bridge
			■ ■ ■ ■ ■ ■ ■ ■	◆

DISCLAIMER: If you encounter broken hyperlinks, please fill out Data Practice Form:
<http://www.dot.state.mn.us/information/datapractices/index.html>

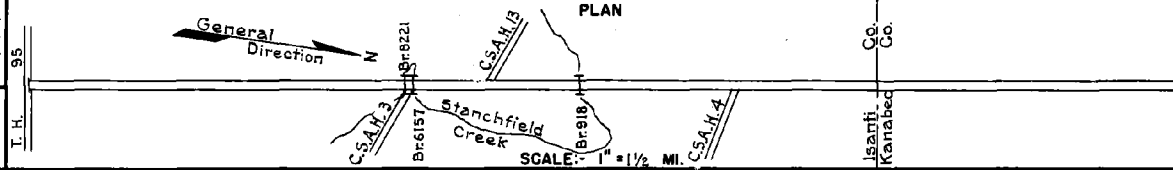


PREPARED BY
HIGHWAY PLANNING SURVEY
IN COOPERATION WITH
U. S. PUBLIC ROADS ADMINISTRATION

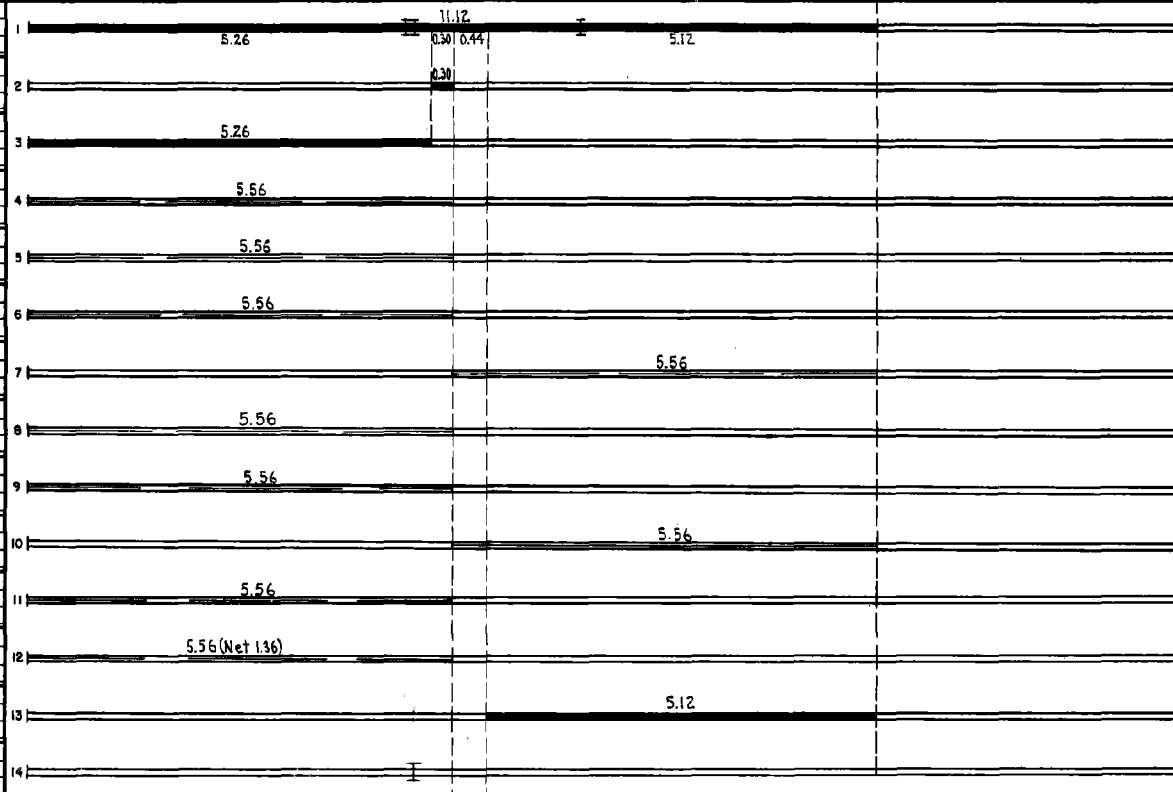
STATE OF MINNESOTA
DEPARTMENT OF HIGHWAYS
ROAD LIFE STUDIES
CONSTRUCTION PROJECT LOG RECORD

CONTROL SECTION 3002
TRUNK HIGHWAY 47
COUNTY Isanti
DISTRICT 3B

LIMITS: Jct. T.H. 95 - N. Co. Line



YEAR BUILT	PROJECT N°	DESCRIPTION			CODE N°
		TYPE	WIDTH	THICKNESS	
		Gravel	20'	1"	No Record of Constr.
		Br. 8221, 6157 & 918	18' 17"		18 B.S., 22' 3 S & 30' B.S. Added in 1934
1937	A.F.E. 22	Mixed Bitum.	28'	1 1/2"	Maint. Dept.
1939	A.F.E. 44	Mixed Bitum.	22'	1"	Maint. Dept.
M		Spot Treat.			Rd 011 & RT 3 3399 Gal./Mi.
1940	A.F.E. 33	Bit. Surf. Repair			Grav. 190 C.Y./Mi. Maint. Dept.
M		Spot Treat.			564, 3462 Gal./Mi.
1941	A.F.E. 19	Bit. Surf. Repair	26'		Grav. 158 C.Y./Mi. Maint. Dept.
M		Spot Treat.			RT 3 & MG 3 1624 Gal./Mi.
1942	A.F.E. 4	Bit. Surf. Repair	26'		Grav. 102 C.Y./Mi. Maint. Dept.
M		Spot Graveling			1022 C.Y./Mi. Maint. Dept.
1942	A.F.E. 6	Spot Graveling			1022 C.Y./Mi. Maint. Dept.
M		Spot Treat.			MC-3, 409 Gal./Mi.
1943	A.F.E. 4	Bit. Surf. Repair	26'		Grav. 56 C.Y./Mi. Maint. Dept.
M		Spot Treat.			MG 2, 2401 Gal./Mi.
1944	A.F.E. 4	Bit. Surf. Repair	26'		Grav. 107 C.Y./Mi. Maint. Div.
M		Grav. Resurfacing			282 C.Y./Mi. Maint. Div.
1944	A.F.E. 6	Grav. Resurfacing			282 C.Y./Mi. Maint. Div.
M		Spot Treat.			RT-6, 1089 Gal./Mi.
1945	A.F.E. 4	Bit. Surf. Repair	26'		Grav. 53 C.Y./Mi. Maint. Div.
M		Spot Treat.			RT-6, 9473 Gal.
1946	A.F.E. 4	Bit. Surf. Repair	22'		Agg. 476 C.Y.
C		Heavy Reshaping	32'		SC-3, 86,482 Gal.
1946	A.F.E. 20 & 32	Sand-Grav. Base	28'	9"	
1947	A.F.E. 29 & 30	Bit. Surf. Treat.	26'		(Mixed Prime)
C		Reconstruct			
1946	Br. Crew #1	Bridge # 6157	24'		17' B.S.



YEARS FROM	TO	TOTAL MILES	UNINCORPORATED		INCORPORATED		RURAL		URBAN	
			RDWY. MI.	BR. MI.	RDWY. MI.	BR. MI.	RDWY. MI.	BR. MI.	RDWY. MI.	BR. MI.
1934		11.12	11.11	0.01	0.09	0.00	11.11	0.01	0.00	0.00

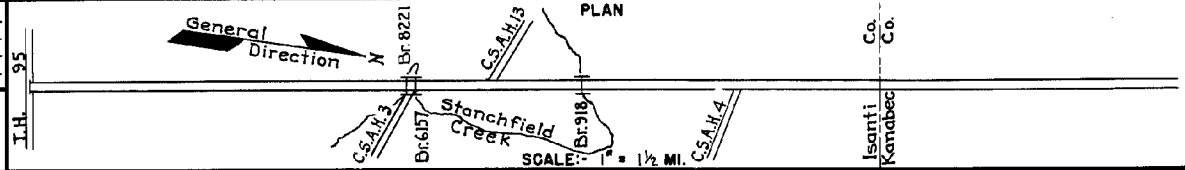
REMARKS: Layout is to scale as of 1934

PREPARED BY
HIGHWAY PLANNING SURVEY
IN COOPERATION WITH
U.S. PUBLIC ROADS ADMINISTRATION

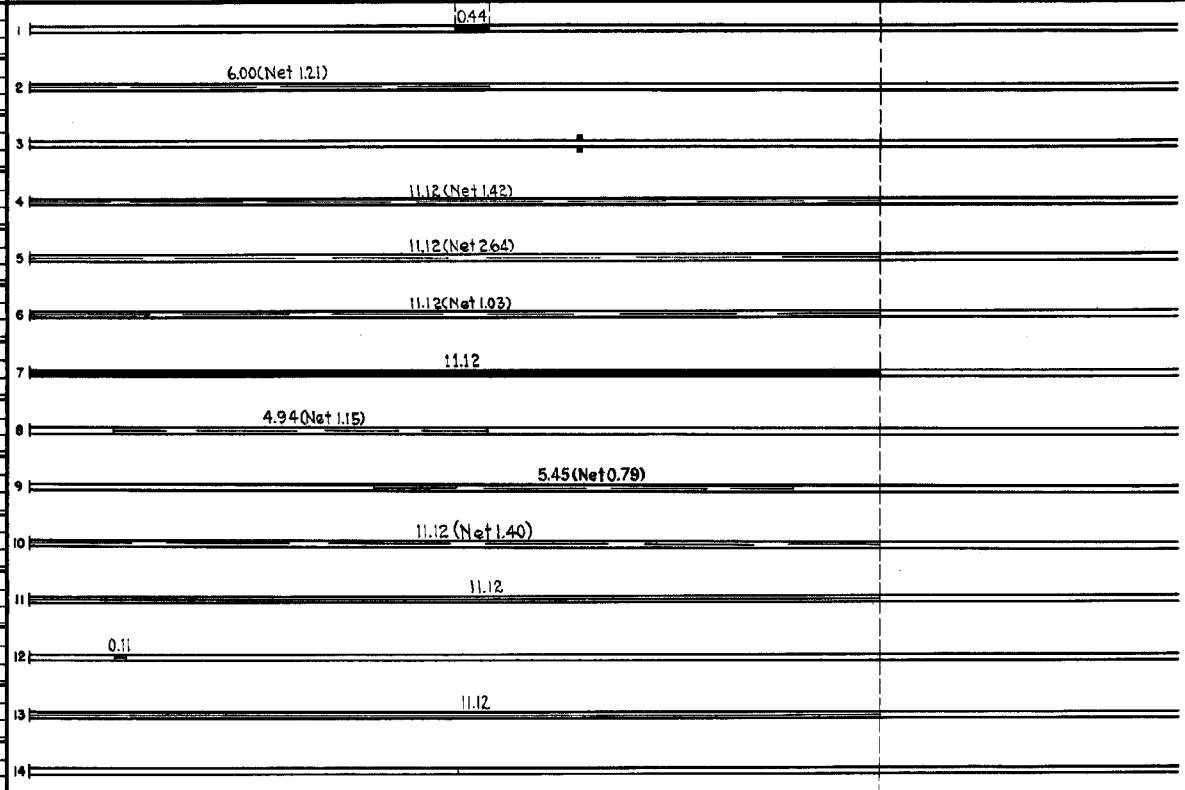
STATE OF MINNESOTA
DEPARTMENT OF HIGHWAYS
ROAD LIFE STUDIES
CONSTRUCTION PROJECT LOG RECORD

CONTROL SECTION 3002
TRUNK HIGHWAY 47
COUNTY Isanti
DISTRICT 3B

LIMITS: Jct. T.H. 95 - N. Co. Line



YEAR BUILT	PROJECT N°	DESCRIPTION			CODE N°
		TYPE	WIDTH	THICKNESS	
	(1)	Mixed Bit.	26'	1"	No record of Const.
M 1947	A.F.E. 4	Spot Treat. Bit. Surf. Repair			SC-3, 8868 Gal. Agg. 516 C.Y.
C 1948	(2)	Widen Br. 918	30'		S.P. 3002-02 30' B.S.
M 1948	A.F.E. 4	Spot Treat. Bit. Surf. Repair	24'		SC-3, 12456 Gal. Agg. 1012 Tons
M 1949	A.F.E. 4	Spot Treat. Bit. Surf. Repair	24'		SC-3, 22367 Gal. Agg. 1308 C.Y.
M 1950	A.F.E. 4	Spot Treat. Bit. Surf. Repair	24'		SC-4, 7796 Gal. Agg. 512 C.Y.
C 1951	A.F.E. 20	Bit. Resurf. Mixed Bit.	26'	1"	SC-3, 84074 Gal. Agg. 7770 Tons
M 1954	A.F.E. 604	Spot Treat. Bit. Surf. Repair	24'		SC-4, 9381 Gal. Agg. 806 Tons
M 1955	A.F.E. 604	Spot Treat. Bit. Surf. Repair	24'		SC-4, 5909 Gal. Agg. 567 Tons
M 1956	A.F.E. 604	Spot Treat. Bit. Surface Repair	24'		SC-4, 11486 Gal. Agg. 1021 Tons
M 1957	A.F.E. 605	Light Bit. Seal	25'		RC-2, 18047 Gal. Agg. 711 C.Y.
M 1959	A.F.E. 604	Bit. Surf. Repair	24'		SC3&MG2, 1000 Gal. Agg. 77 Tons
M 1962		Bit. Seal Coat	25'		RS-2, 18267 Gal. Agg. 695 C.Y.
C 1974	-05	Pl. Mix Bit. Earth Shoulders	#	2'-24'	



YEARS FROM TO		TOTAL MILES	UNINCORPORATED		INCORPORATED		RURAL		URBAN	
FROM	TO		RDWY. MI.	BR. MI.	RDWY. MI.	BR. MI.	RDWY. MI.	BR. MI.	RDWY. MI.	BR. MI.

REMARKS: See Sheet N° 1
 (1) This section apparently treated between 1937 & 1947, date unknown.
 (2) Widening done under Bridge Maintenance contract.

