

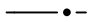
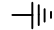
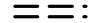



LEGEND

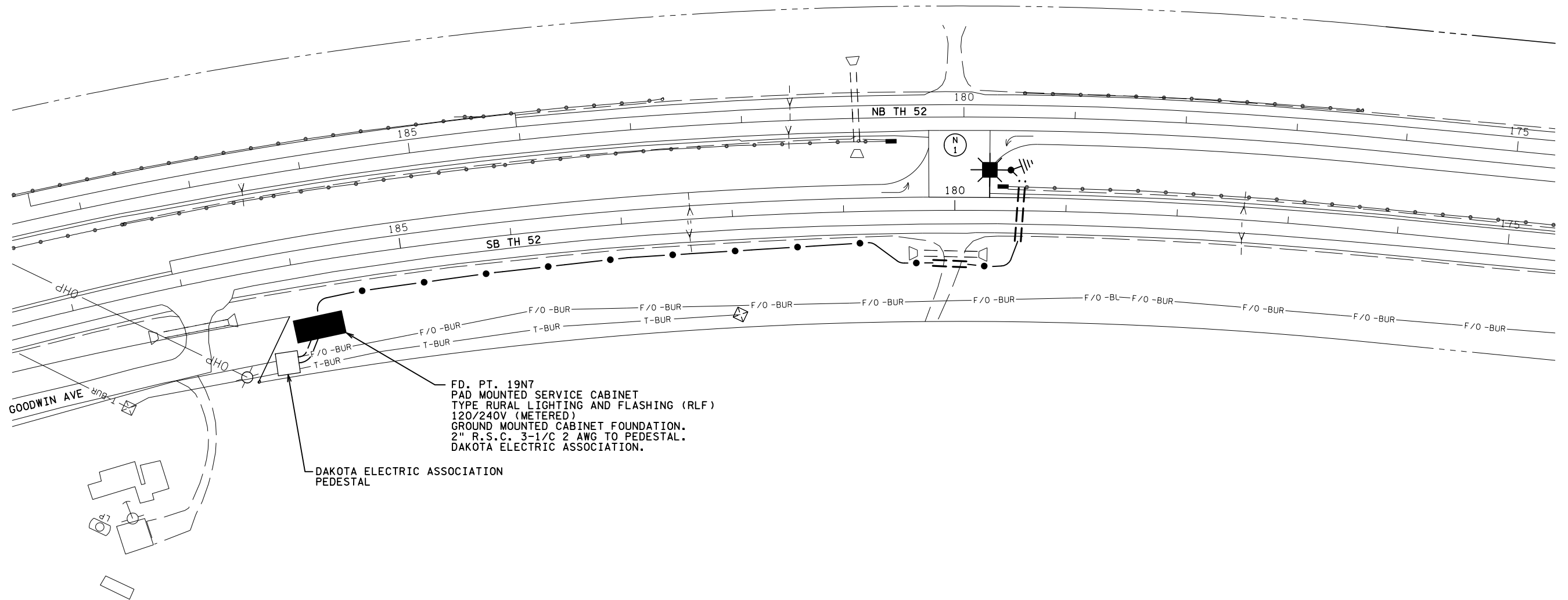
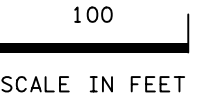
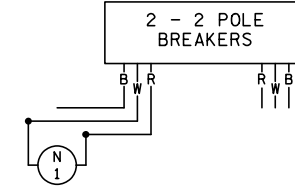
-  LIGHTING UNIT
-  PAD MOUNTED FD. PT. CABINET
-  DIRECT BURIED CABLE 4 CONDUCTOR 4 AWG
-  PERMANENT GROUND ROD (25 OHMS OR LESS)
-  3" PVC (UNLESS NOTED OTHERWISE)
-  LIGHTING UNIT IDENTIFIER

UTILITY OWNERSHIP	
OVERHEAD ELECTRIC — OHP —	DAKOTA ELECTRIC ASSOCIATION
BURIED TELEPHONE — T-BUR —	FRONTIER COMMUNICATIONS
BURIED FIBER — F/O -BUR —	ZAYO GROUP

FEEDPOINT 19N7
LIGHTING UNIT LOCATION AND TYPE

NO.	STATION	LT.	RT.	LOCATION	TYPE	FOUNDATION
1	179+50	X		NB TH52	9-40	E

W DENOTES NEUTRAL CONDUCTOR
B AND R DENOTE CURRENT CARRYING CONDUCTORS
FD. PT. 19N7
120/240 VOLT



FD. PT. 19N7
PAD MOUNTED SERVICE CABINET
TYPE RURAL LIGHTING AND FLASHING (RLF)
120/240V (METERED)
GROUND MOUNTED CABINET FOUNDATION.
2" R.S.C. 3-1/2" 2 AWG TO PEDESTAL.
DAKOTA ELECTRIC ASSOCIATION.

DAKOTA ELECTRIC ASSOCIATION
PEDESTAL

PLOTTED/REVISED: 19-MAR-2019

DISTRICT #: Metro
PLOT NAME: 1906-72
PATH & FILENAME: Projects\DM罗斯052\1906\072\Traffic\Lighting\1906-72

BY	DATE	REVISIONS

FEEDPOINT: 19N7 LOCATION: GOODWIN AVENUE
METER ADDRESS: 26497 ROCHESTER BLVD, CANNON FALLS, MN 55009

LIGHTING PLAN

CERTIFIED BY  LIC. NO. 19863 DATE: 19-MAR-2019

STATE PROJ.NO. 1906-72 (T.H. 52) SHEET NO. SL3 OF SL3 SHEETS

DRAWN BY: JDC CKD BY: PB