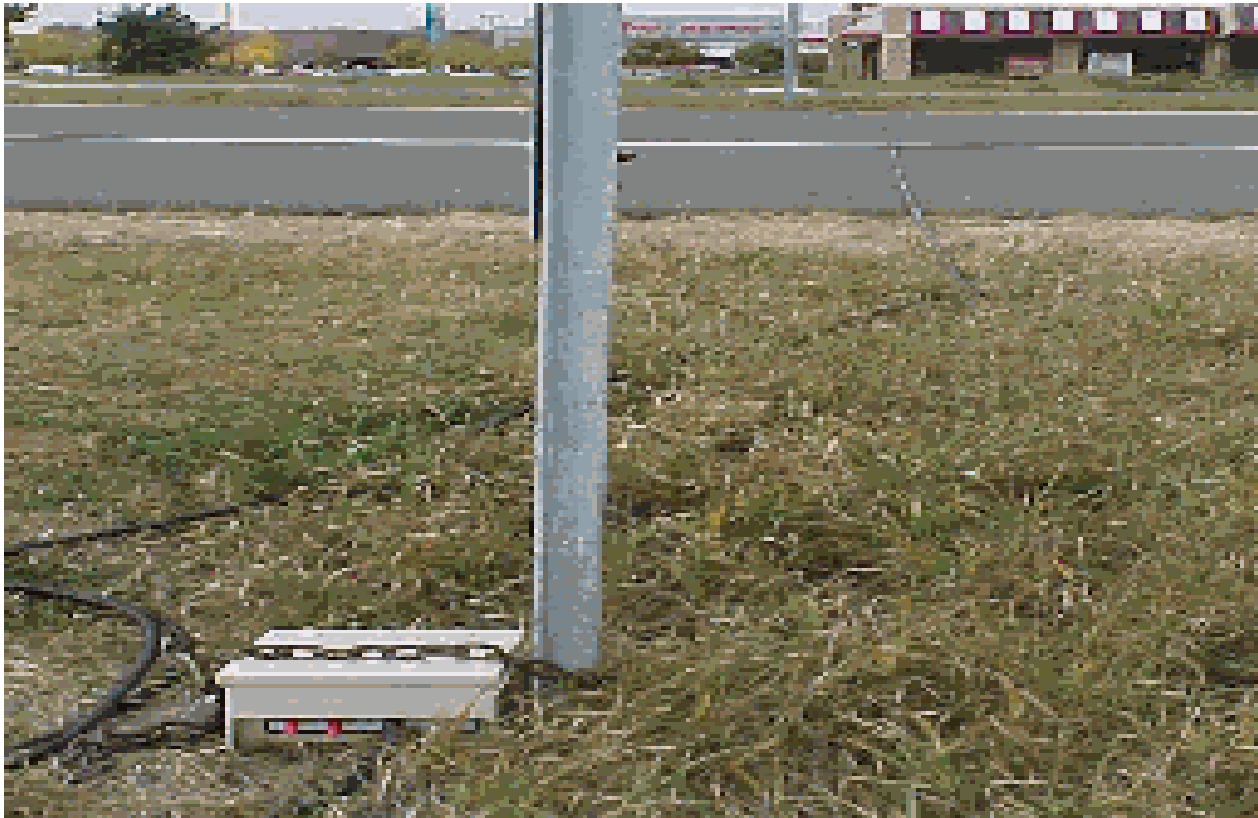


SPECIAL TRAFFIC COUNTS



DEFAULT ADT

- CURRENTLY, CSAH'S COUNTED ON 4 YEAR CYCLE
- VEHICLE CLASS DISTRIBUTIONS APPLIED VIA SA ESAL CALCULATOR:
 - RURAL VS. URBAN
 - 4 ADT RANGES
- GOOD FOR PLANNING LEVEL USE
- CAN BE USED FOR PROJECT LEVEL USE, **BUT KEEP IN MIND...**

MNDOT COUNTS

- TYPICALLY TAKEN BETWEEN APRIL & OCT.
- COUNT TAKEN DURING WORK WEEK
- COUNT FOR 48 HOURS
- CURRENTLY DO NOT PERFORM VEHICLE CLASSIFICATION COUNTS

SPECIAL COUNTS

- DSAE'S HAVE COUNTERS TO LOAN
 - 2 PER DISTRICT
- MNDOT (TDA OR DISTRICT) WILL TRAIN
 - ON-SITE, FREE
- 2 TUBES PLACED ACROSS ROADWAY
- ½ HOUR TO SET TUBES
- SEND CARDS TO TDA, RESULTS IN DAY(S) FOR FREE

SPECIAL COUNTS

- OBTAIN VERY SPECIFIC DATA
 - SEASONAL PEEKS (TOURISM, AGRICULTURAL, TIMBER, ETC.)
- FOR PAVEMENT DESIGN:
 - ALONG WITH FWD INFO, CHOOSE OVERLAY VS. RECONSTRUCT
 - BITUMINOUS OVERLAY THICKNESS COSTS:
 - COST OF 1 INCH/LANE/MILE (12' WIDTH) = **\$21,000**
 - COST OF PREMATURE PAVEMENT FAILURE = **\$???**

NON-INTRUSIVE DETECTION

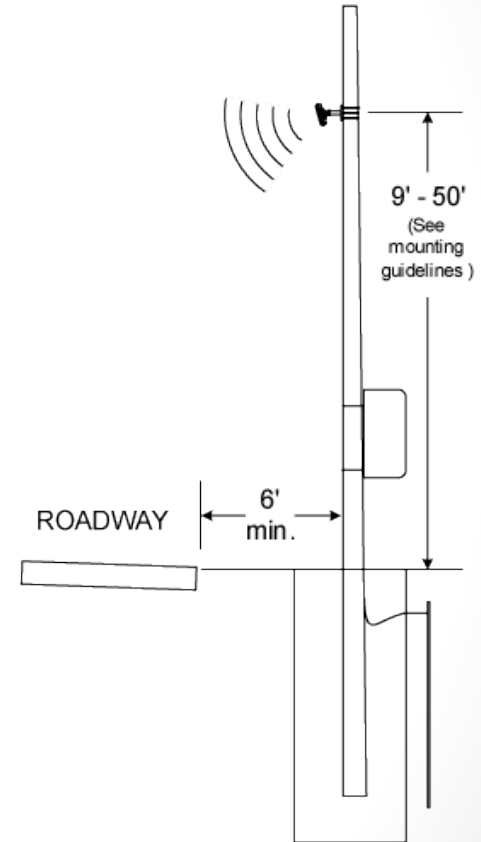
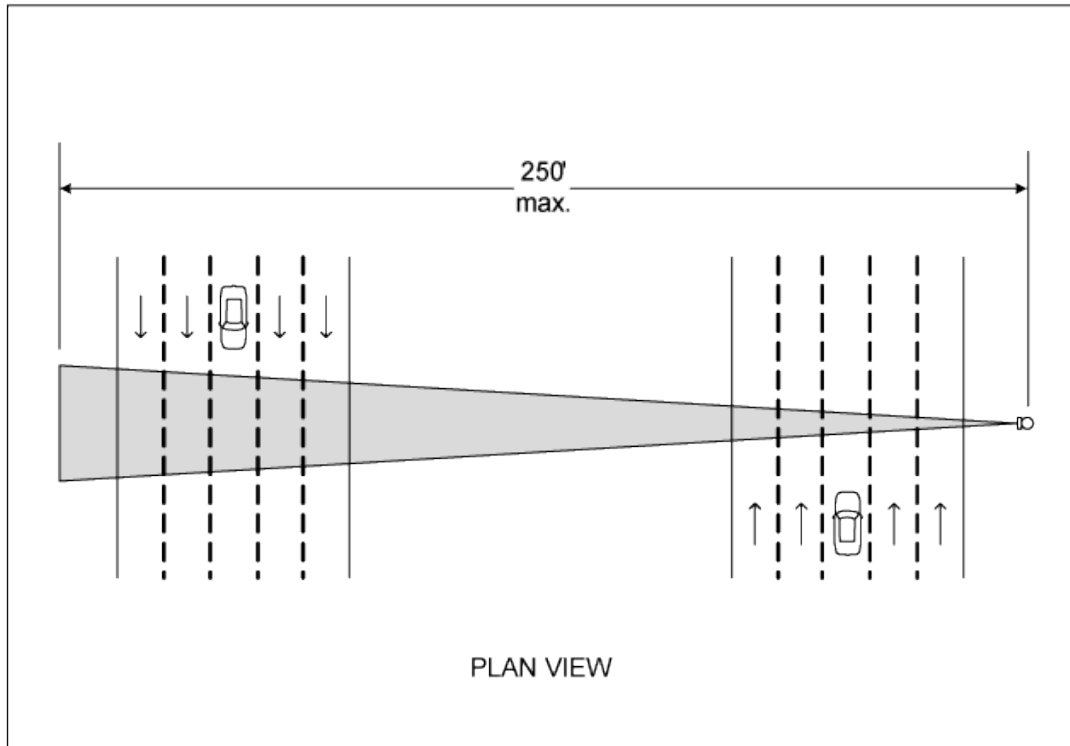
- IF NEEDED IN WINTER, CAN USE MNDOT'S NON-INTRUSIVE TRAFFIC DETECTION UNITS
- FAIRLY NEW PORTABLE RADAR TECHNOLOGIES
- UNIT COSTS \$20,000
- COMES ON TRAILER
- SHOULDER or BACKSLOPE (w/in 250')
- MNDOT MAY PROVIDE FOR +/- *FREE??*
- MNROAD TESTING WAVETRONIX THIS WEEK

NON-INTRUSIVE DETECTION



WAVETONIX HD RADAR TRAFFIC COUNTING DEVICE

WAVETRONIX HD RADAR



MULTI-SEASON COUNTS

- WHILE 48-HOUR COUNT IS BETTER THAN 4-YEAR COUNTS, MULTI-SEASON COUNTS CAN TAKE DESIGN TO HIGHEST LEVEL ACCURACY
- TDA CAN HELP DESIGN COUNT
- USE YOUR KNOWLEDGE OF HOW TRAFFIC USES ROADS

MnDOT TRAFFIC FORECASTING & ANALYSIS

- CAN HELP:
 - EXPERTISE
 - TRAIN STAFF TO PLACE COUNTERS
 - ON-SITE, IN-SITU, FREE
 - PLAN MULTI-SEASON SPECIAL COUNTS
- CONTACT TOM NELSON 651-366-3868
- <http://www.dot.state.mn.us/traffic/data/index.html>

OTHER

- SPECIAL COUNTS FOR ASSESSMENTS
- LANE DISTRIBUTION CONSIDERTIONS:
 - ON 4-LANE TYPICALY 95% OF HEAVY TRUCKS USE RIGHT LANE
 - TRUCKS DELIVERING HEAVY, LEAVING EMPTY
 - DESIGN PAVEMENT STRUCTURE ACCORDINGLY

TDA CONTACTS

- **Vehicle Classification/HCAADT**

Tom Nelson

thomas.nelson@state.mn.us

651-366-3868

Shannon McGrath

shannon.mcgrath@state.mn.us

651-366-3878