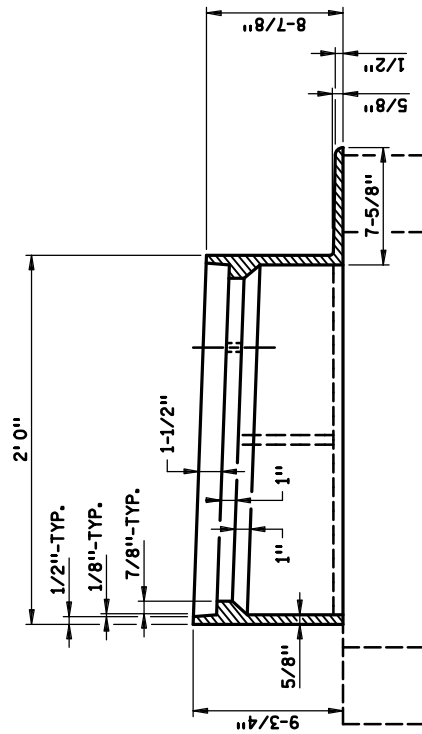
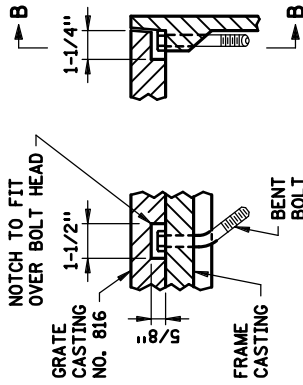


TOP VIEW



SECTION A-A



SECTION THRU FRAME

VIEW B-B

GRATE AND FRAME WITH BOLT INSTALLED ①

CASTINGS USED FOR ASSEMBLY	
GRATE FRAME	NO. 805 ( 4132 )
GRATE	NO. 814A ( 4152 ), 815 ( 4153 ), 816 ( 4154 ), 817 ( 4155 )

**NOTES:**

USE 1/4" FILLETS IN ALL CORNERS.

SEE STANDARD PLATE 7111 FOR INSTALLATION REQUIREMENTS.

① AT LOCATIONS INDICATED IN TOP VIEW, PROVIDE 9/16 INCH DIA. HOLES WHEN GRATE NO. 816 ( 4154 ) IS USED WITH THIS FRAME. FIELD PLACE 1/2 INCH DIA. X 4 INCHES LONG GALV. BOLT IN UP STREAM SIDE AND BEND UNDERSIDE TO PREVENT REMOVAL. THIS WILL PREVENT GRATE NO. 816 ( 4154 ) FROM BEING PLACED IN WRONG DIRECTION AND NOT BEING BICYCLE SAFE.

GRATE FRAME CASTING NO. 805

APPROVED SEPTEMBER 19, 2018

*Rom S. [Signature]*  
STATE DESIGN ENGINEER

STATE OF MINNESOTA  
DEPARTMENT OF TRANSPORTATION

CATCH BASIN FRAME CASTING  
( FOR SQUARE GRATE )

SPECIFICATION  
REFERENCE  
2506

STANDARD  
PLATE  
NO.  
**4132G**