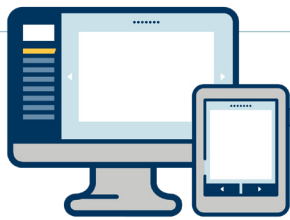




Overview Information

MnDOT recently hosted an virtual open house for area residents, travelers, and business owners to learn more about the study and provide feedback on the initial design concepts that will increase safety for all users of Highway 371. Viewers had the opportunity to give their feedback on sidewalk and parking options in the downtown area. The project team also asked how viewers would feel driving or biking through a roundabout at the Hwy 5/Hwy 371 intersection. The feedback received will help MnDOT better understand how the community feels about the proposed sidewalks, parking, and roundabout design that may be part of the final design for Hwy 371 in Hackensack.



VIRTUAL OPEN HOUSE STATISTICS

Duration: May 8–25, 2020 (17 days)

Total Online Visitors: 1,411 people	Total Form Responses: 430 submissions	Average Time on Site: 3:36 minutes
--	--	---

Top Response Locations:



- Brainerd
- Breezy Point
- Brooklyn Park
- Hackensack
- Maple Grove
- Pequot Lakes
- Pine River
- Richfield
- Roseville
- Walker

Website Access Sources:

Social Media Link 71%	Direct Link 18%	Referral Link 10%	Internet Searches 1%
--	----------------------------------	------------------------------------	---------------------------------------

Open Ended Comments

The following open-ended comments were provided through the general virtual open house comment form:

- “ The highway works well to move people quickly through town, but is not inviting people to stop and enjoy Hackensack.
- “ Entering the highway is sometimes difficult due to traffic and poor sight lines. Crossing on foot (especially with kids) is sometimes worrisome due to traffic. Some places (hardware store) don't have clear entrances to the parking lots so it's a bit of a free for all.
- “ Road access around Swanson's is dangerous, with people zooming in and out at different speeds, and others backing out of parking spots into the road. I wish it was safer to walk along the 371, and to cross it as a pedestrian.
- “ The intersection of Highway 5 and 371 is a bit dangerous in the summer...a lot of traffic heading north and south on 371 and also exiting Swanson's gas station. There are so many intersection streets at that point. Also, there are no designated safe pedestrian crosswalks to stop traffic on 371. Parking is a problem.
- “ I don't see any need for improvement unless you could plant some trees in town to soften the “everything is paved” look. I have not noticed a disrespect for the 30 mph speed either. I would think the roundabout would be nice on busy weekends but...have the potential of creating a serious bottleneck in town or entering town from the north on busy weekend lake home traveling.
- “ 371 and county 5 intersection is dangerous especially during the summer season. Entire stretch through town could use center turn lanes for better traffic flow.
- “ My family and I live and work in town. There is not much to like about the current outdated highway layout unless all you intend to do is drive in a car. We enjoy walking and biking whenever possible. The 371 and County 5 intersection is a free-for-all during the tourist season, you get multiple cars from the crossroads... trying to jump out on the highway at any given moment not knowing who is going to move and when.
- “ The five way intersection by Swanson's is dangerous...a lot of people patronizing the business, coming from town plus the through traffic and people turning from co rd 5. It's like a ballet sometimes to coordinate all the movement without getting killed.
- “ I like that there is parking close to businesses I visit. I do not like... no sidewalks and it is not safe to walk along the highway especially in summer. It is also difficult to cross the highway in summer.

Contact:

Nancy Graham, Project Manager
 nancy.graham@state.mn.us 218-214-3532

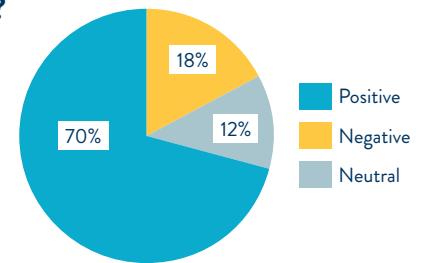
Learn More:

@mndotnorthwest
 facebook.com/groups/mndotnorthwest

Do you like sidewalks on both sides of Highway 371 throughout the downtown area?

THEMES AND INSIGHTS:

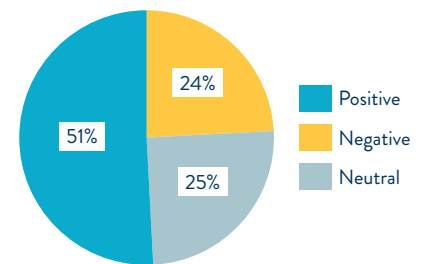
- **Business Access:** Feels safer and more customer friendly
- **Parking:** Not enough parking; makes deliveries harder
- **Safety:** Greatly improve safety, especially for older and disabled; lots of walking and biking in summer
- **Pedestrians:** Not needed on both sides; walkers use Paul Bunyan; unnecessary expense
- **Walkability:** Encourage people to walk to businesses instead of driving



Do you like the parking on both sides of Highway 371?

THEMES AND INSIGHTS:

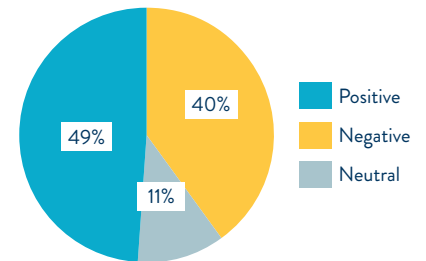
- **Business Access:** Poor large truck/trailer access, parallel design limits parking
- **Parking:** Need spaces on both sides, convenient both directions, promotes development
- **Safety:** Structured parking improves pedestrian safety
- **Pedestrians:** Pedestrians will cross randomly
- **Speed:** Parking on both sides slows traffic



How do you feel about having a roundabout at this location?

THEMES AND INSIGHTS:

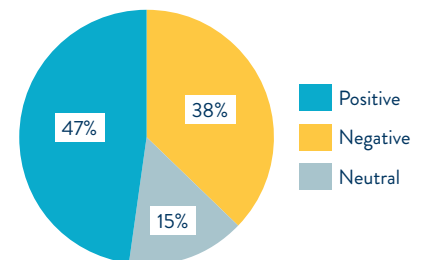
- **Negative Feelings:** Strongly dislike roundabouts; concerns about impact on Swanson's
- **Positive Feelings:** Safer than current design; keeps traffic moving



How would you feel driving through this type of intersection?

THEMES AND INSIGHTS:

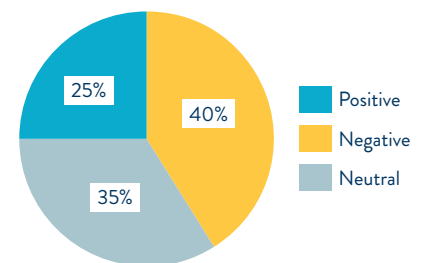
- **Negative Traffic Impacts:** Confusion will cause delays
- **Negative Safety Impacts:** Confusion will cause crashes
- **Negative Business Access and Parking:** Difficult for large trucks
- **Positive Safety Impacts:** Current design unsafe; people get used to them; provide user education
- **Positive Traffic Impacts:** Slows down traffic, but keeps it moving



How would you feel walking or biking through this type of intersection?

THEMES AND INSIGHTS:

- **Negative Traffic Impacts:** Confused drivers and poor visibility; less safe for bikes and pedestrians
- **Negative Safety Impacts:** Constant traffic flow makes crossing hard
- **Positive Safety Impacts:** Reduces crossing distance, traffic from one direction; need clear crosswalks
- **Positive Traffic Impacts:** Slows traffic



What are your initial reactions about this intersection option?

THEMES AND INSIGHTS:

- **Negative Feelings:** Too confusing; difficult for large trucks; not needed; bad for Swanson's
- **Positive Feelings:** Seen them work elsewhere once people adapt; slows traffic but keeps it moving; will need to be big enough

