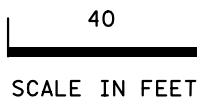
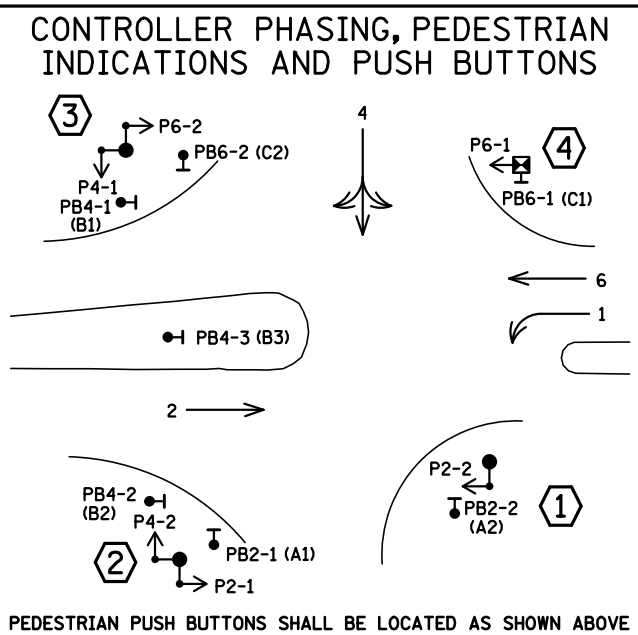
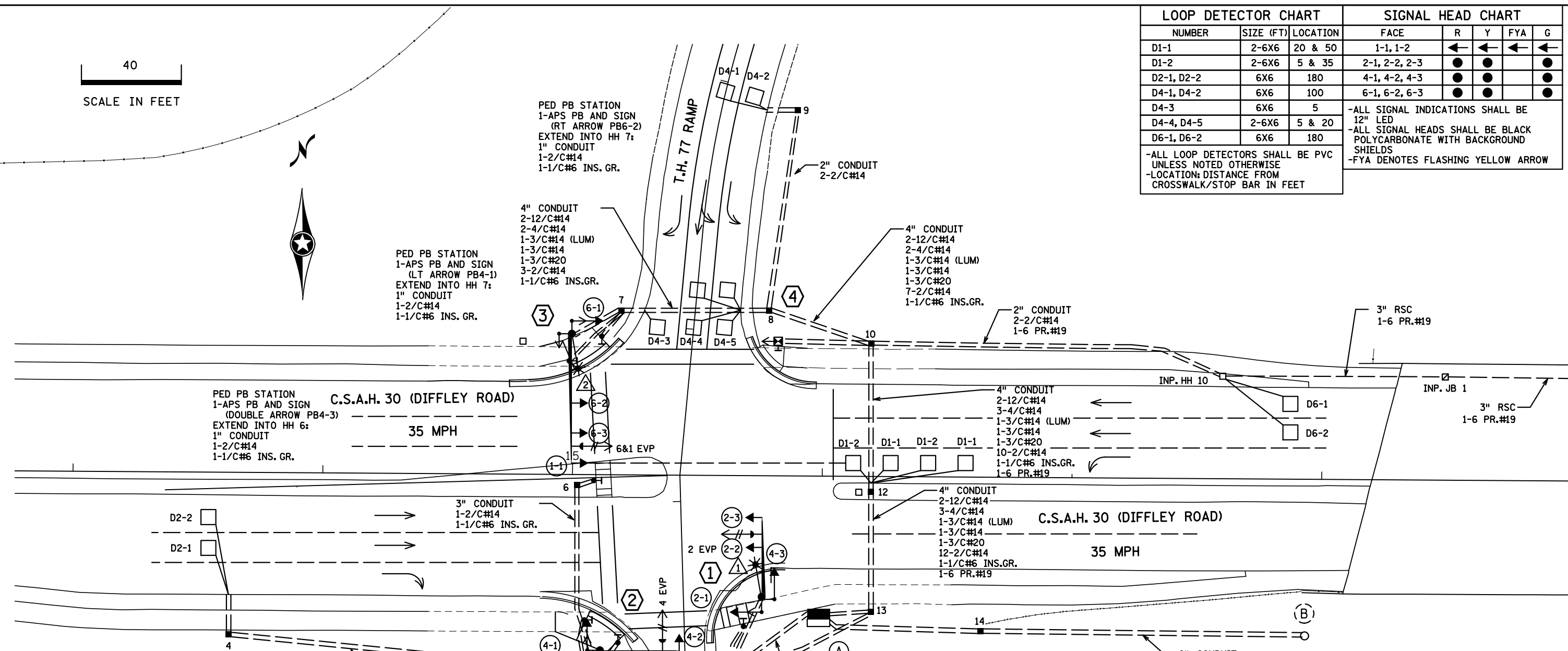


I PLOT NAME: LAYOUT PATH & FILENAME: Projects\DM_0770000\Traffic\Signals\468 T.H.77 @ (30)\DIFFLEY RD W RAMP 186346\T1863461.spl.dwg PLOTTED: REVISED: 14-SEP-2022



LOOP DETECTOR CHART			SIGNAL HEAD CHART				
NUMBER	SIZE (FT)	LOCATION	FACE	R	Y	FYA	G
D1-1	2-6X6	20 & 50	1-1, 1-2	←	←	←	←
D1-2	2-6X6	5 & 35	2-1, 2-2, 2-3	●	●	●	●
D2-1, D2-2	6X6	180	4-1, 4-2, 4-3	●	●	●	●
D4-1, D4-2	6X6	100	6-1, 6-2, 6-3	●	●	●	●
D4-3	6X6	5	-ALL SIGNAL INDICATIONS SHALL BE 12" LED				
D4-4, D4-5	2-6X6	5 & 20	-ALL SIGNAL HEADS SHALL BE BLACK POLYCARBONATE WITH BACKGROUND SHIELDS				
D6-1, D6-2	6X6	180	-FYA DENOTES FLASHING YELLOW ARROW				

-ALL LOOP DETECTORS SHALL BE PVC UNLESS NOTED OTHERWISE
-LOCATION: DISTANCE FROM CROSSWALK/STOP BAR IN FEET



SIGNAL SYSTEM OPERATION

- THE SIGNAL SYSTEM FLASH MODE IS ALL RED.
- NORMAL OPERATION IS 4 PHASE, WITH PHASE 1 BEING FLASHING YELLOW ARROW BY TIME OF DAY.
- PHASES 2 AND 6 SHALL BE ON VEHICLE RECALL.

- NOTES:
- SEE SPECIAL PROVISIONS FOR STATE FURNISHED MATERIALS.
 - THE EXACT LOCATION OF HANDHOLES, POLES, LOOP DETECTORS, EQUIPMENT PAD, AND PEDESTRIAN CURB RAMPS SHALL BE VERIFIED IN THE FIELD BY MNDOT TRAFFIC OFFICE PERSONNEL.
 - THE CONTRACTOR IS RESPONSIBLE FOR COORDINATING THE CONNECTION OF THE POWER FOR THE TRAFFIC SIGNAL SYSTEM.
 - FOR TYPE D SIGNS SEE DETAIL SHEET. ALL SIGNS REQUIRED ARE INCIDENTAL.
 - FOR PAVEMENT MARKINGS SEE PAVEMENT MARKING PLAN.
 - REMOVAL OF EXISTING SIGNAL SYSTEM IS INCIDENTAL.
 - THIS PLAN SPECIFIES CONDUIT SIZES, TYPES, AND GENERAL LOCATIONS. THE EXACT LOCATIONS WILL BE DETERMINED IN THE FIELD. CONDUITS UNDER THE ROADWAYS REQUIRE BORING.
 - ALL NEW CONDUIT SHALL BE PVC - SCHEDULE 80 OR HDPE SCHEDULE 80 AND SHALL CARRY 1/C#6 GREEN INSULATED GROUNDING CONDUCTOR AS SHOWN IN THE PLAN.
 - ITEMS DENOTED WITH AN * ARE INCLUDED IN PAYMENT FOR THE EVP SYSTEM PAY ITEM.
 - ITEMS DENOTED WITH AN ** ARE INCLUDED IN PAYMENT FOR THE INTERCONNECT SYSTEM PAY ITEM.
 - SEE SHEET SS9 FOR POLE NOTES.

BY	DATE	REVISIONS	SYSTEM ID: 21273	T.E. 6579	INTERSECTION LAYOUT TRAFFIC CONTROL SIGNAL SYSTEM "A" T.H. 77 AT CSAH 30 (DIFFLEY ROAD), WEST RAMPS IN EAGAN, DAKOTA COUNTY	S.A.P. NO. 019-630-017	DRAWN BY: MAS	CKD BY: GAK	DATE: 06-02-16
SJK	9/14/22	AS-BUILT PLAN	METER ADDRESS:	T.E.	CERTIFIED BY _____ LICENSED PROFESSIONAL ENGINEER	LIC. NO. 26829	DATE: _____	STATE PROJ. NO. 1925-43 (T.H. 77) SHEET NO. SS8 OF SS18 SHEETS	

MATCHLINE CSAH 30 STA. 19+00 E.B.

I/PLOT NAME: POLE NOTES
 PATH & FILENAME: Projects\DM罗斯\07700000\Traffic\Signal\468 T.H.77 @ (30)\DIFFLEY RD W RAMP 186346\1863461_spl.dwg\NOTTED/REVISED: 14-SEP-2022

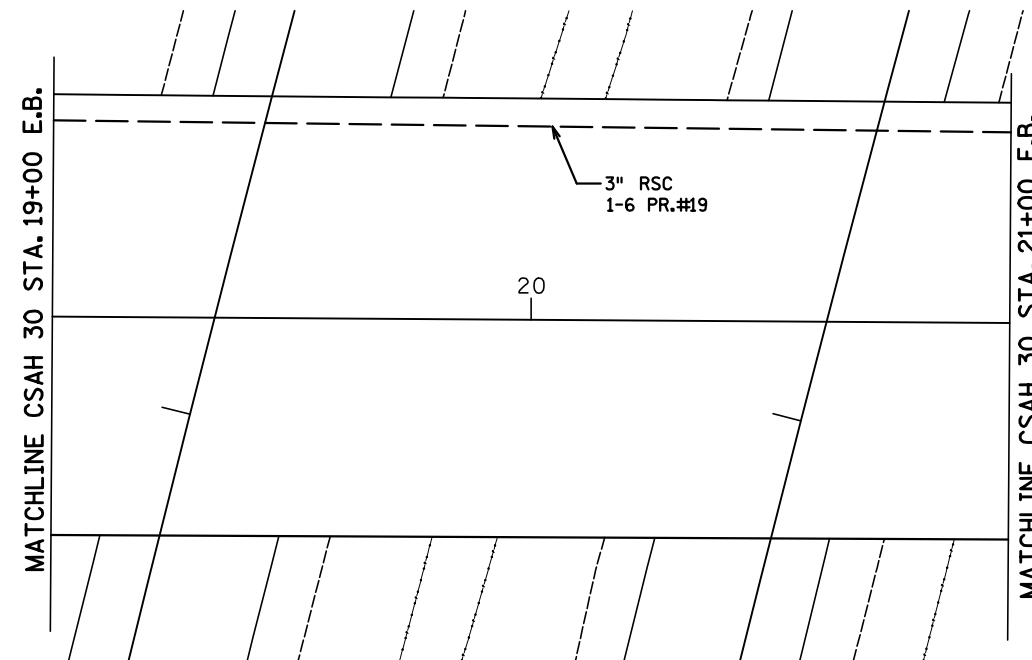
- ① PA90 POLE FOUNDATION
 TYPE PA90-A-30-D40-9 (DAVIT AT 350°)
 1-ANGLE MOUNT SIGNAL OVERHEAD AT 0'
 1-STRAIGHT MOUNT SIGNAL OVERHEAD AT 11'
 2-ANGLE MOUNT SIGNALS AT 90° AND 180°
 1-ANGLE MOUNT C.D. PED HEAD AT 180°
 1-ONE WAY EVP DETECTOR AND
 CONFIRMATORY LIGHT (PHASE 2)
 LUMINAIRE - LED
 2-TYPE D SIGNS
 1-TYPE R9-3 SIGN FACING POLE 4
 EXTEND INTO HH 2:
 3" CONDUIT
 2-12/C#14
 1-3/C#14 (LUM)
 1-3/C#14
 1-3/C#20
 1-1/C#6 INS. GR.

- ② PA90 POLE FOUNDATION
 TYPE PA90-A-30
 1-ANGLE MOUNT SIGNAL OVERHEAD AT 0'
 2-ANGLE MOUNT SIGNALS AT 90° AND 180°
 2-ANGLE MOUNT C.D. PED HEADS AT 90° AND 180°
 1-ONE WAY EVP DETECTOR AND
 CONFIRMATORY LIGHT (PHASE 4)
 2-TYPE D SIGNS
 EXTEND INTO HH 3:
 3" CONDUIT
 2-12/C#14
 1-4/C#14
 1-3/C#14
 1-3/C#20
 1-1/C#6 INS. GR.

- ③ PA100 POLE FOUNDATION
 TYPE PA100-A-50-D40-9 (DAVIT AT 350°)
 1-ANGLE MOUNT SIGNAL OVERHEAD AT 0'
 2-STRAIGHT MOUNT SIGNALS OVERHEAD
 AT 11' AND 23'
 1-ANGLE MOUNT SIGNAL AT 180°
 2-ANGLE MOUNT C.D. PED HEADS AT 90° AND 180°
 1-ONE WAY EVP DETECTOR AND
 CONFIRMATORY LIGHT (PHASES 6&1)
 LUMINAIRE - LED
 1-R10-X12 SIGN ADJACENT TO HEAD 1-1
 1-TYPE D SIGN
 EXTEND INTO HH 7:
 3" CONDUIT
 2-12/C#14
 2-4/C#14
 1-3/C#14 (LUM)
 1-3/C#14
 1-3/C#20
 1-1/C#6 INS. GR.

- ④ PEDESTAL FOUNDATION
 10' PEDESTAL POLE PLUS BASE
 1-STRAIGHT MOUNT C.D. PED HEAD AT 0'
 1-APS PB AND SIGN (LT ARROW) (PB6-1)
 1-APS MOUNTING SPACER
 1-R9-3 SIGN FACING POLE 1
 EXTEND INTO HH 10:
 3" CONDUIT
 1-4/C#14
 1-2/C#14
 1-1/C#6 INS. GR.

- Ⓐ EQUIPMENT PAD
 CONTROLLER AND CABINET
 SERVICE EQUIPMENT (PAD MOUNTED)
 CABINET TO HH 2:
 4" CONDUIT
 4-12/C#14
 1-4/C#14
 2-3/C#14
 2-3/C#20
 6-2/C#14
 1-1/C#6 INS. GR.
- CABINET TO HH 13:
 4" CONDUIT
 2-12/C#12
 3-4/C#14
 1-3/C#14
 1-3/C#20
 12-2/C#14
 1-1/C#6 INS. GR.
 1-6 PR.#19
- 1-3", 2-2" AND 1-1 1/2" CONDUIT STUBBED OUT
 (CAPPED BOTH ENDS)
 CONTROLLER CABINET TO SERVICE CABINET:
 2" CONDUIT
 2-1/C#6
 1-1/C#6 INS. GR.
 CONTROLLER CABINET TO SERVICE CABINET (COMMS):
 2" CONDUIT
 1-6 PR.#19
 SERVICE CABINET TO HH 14:
 2" CONDUIT
 3-1/C#2
 SERVICE CABINET TO HH 2:
 2" CONDUIT
 2-3/C#14 (LUM)
 HH 2 TO HH 13:
 2" CONDUIT
 1-3/C#14 (LUM)



- Ⓑ SOP-WOOD POLE (DAKOTA ELECTRIC)
 2" CONDUIT, RISER AND WEATHERHEAD
 TO HH 14 WITH 3-1/C#2

BY	DATE	REVISIONS	SYSTEM ID: 21723	T.E. 6579	POLE NOTES AND MATCHLINES TRAFFIC CONTROL SIGNAL SYSTEM "A" T.H. 77 AT CSAH 30 (DIFFLEY ROAD) WEST RAMPS IN EAGAN, DAKOTA COUNTY	S.A.P. NO. 019-630-017	DRAWN BY: MAS	CKD BY: GAK	DATE: 06-02-16
SJK	9/14/22	AS-BUILT PLAN	METER ADDRESS:			CERTIFIED BY _____ LICENSED PROFESSIONAL ENGINEER	LIC. NO. 26829	DATE: _____	
			MASTER ID:	T.E.		STATE PROJ. NO. 1925-43 (T.H. 77)	SHEET NO. SS9 OF SS18 SHEETS		

