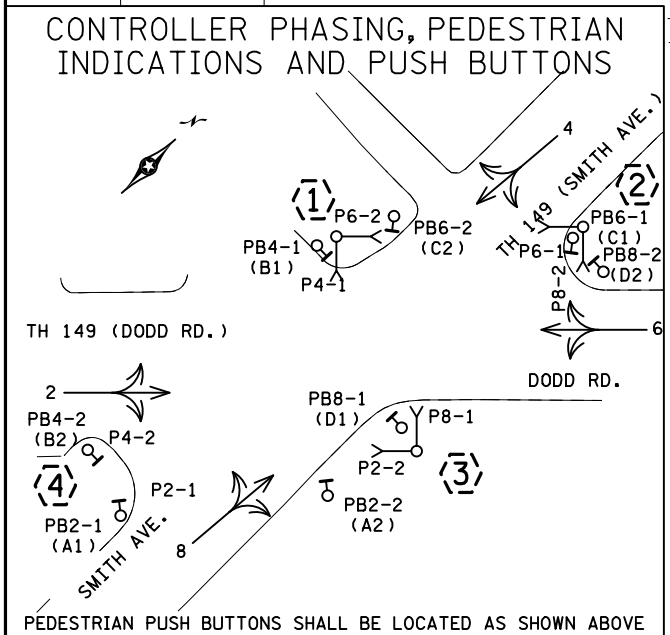
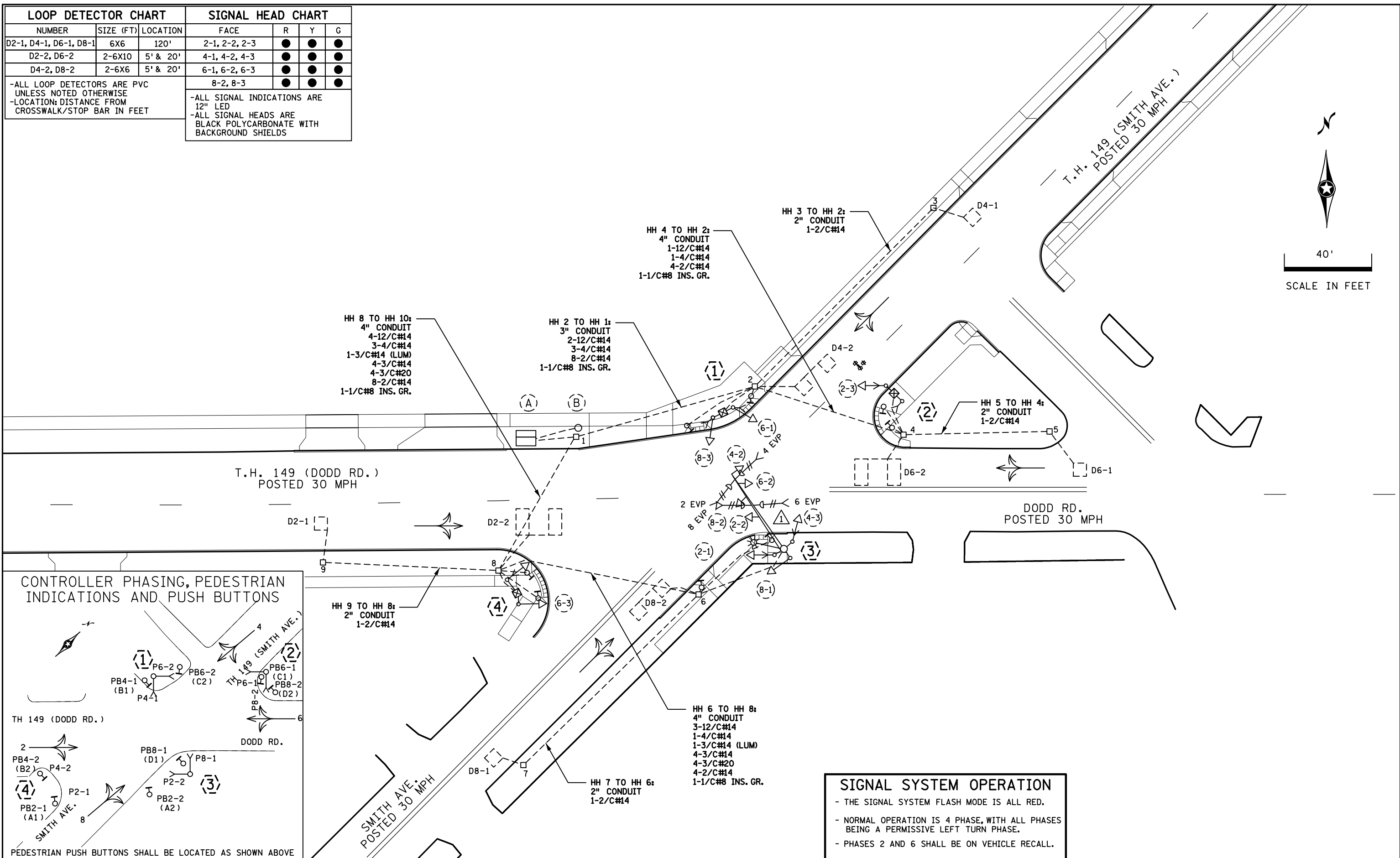
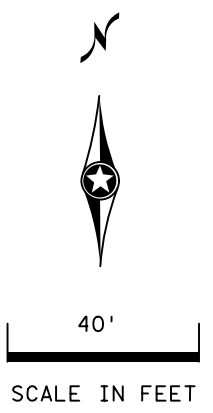


DISTRICT #: Metro
 PLOT NAME: Layout
 PATH & FILENAME: Projects\DM_POS\149\0000\Traffic\Signals\0.00_21459_Smith & Dodd Rd 1735682-2017104\T121459A_sgl.dgn PLOTTED/REVISED: 31-AUG-2022

LOOP DETECTOR CHART			SIGNAL HEAD CHART			
NUMBER	SIZE (FT)	LOCATION	FACE	R	Y	G
D2-1, D4-1, D6-1, D8-1	6X6	120'	2-1, 2-2, 2-3	●	●	●
D2-2, D6-2	2-6X10	5' & 20'	4-1, 4-2, 4-3	●	●	●
D4-2, D8-2	2-6X6	5' & 20'	6-1, 6-2, 6-3	●	●	●
-ALL LOOP DETECTORS ARE PVC UNLESS NOTED OTHERWISE -LOCATION: DISTANCE FROM CROSSWALK/STOP BAR IN FEET			8-2, 8-3	●	●	●
			-ALL SIGNAL INDICATIONS ARE 12" LED -ALL SIGNAL HEADS ARE BLACK POLYCARBONATE WITH BACKGROUND SHIELDS			



SIGNAL SYSTEM OPERATION

- THE SIGNAL SYSTEM FLASH MODE IS ALL RED.
- NORMAL OPERATION IS 4 PHASE, WITH ALL PHASES BEING A PERMISSIVE LEFT TURN PHASE.
- PHASES 2 AND 6 SHALL BE ON VEHICLE RECALL.

BY	DATE	REVISIONS	SYSTEM ID: 2017104	T.E. 2932	S.A.P. NO.	DRAWN BY:	CKD BY:	DATE:
J3T	JUN 28 19	SP1917-45 RED-LINES	METER ADDRESS: 997 DODD ROAD		CERTIFIED BY _____			
			OLD ID: 21459	T.E.	LICENSED PROFESSIONAL ENGINEER	LIC. NO. _____		DATE: _____
INTERSECTION LAYOUT T.H. 149 (DODD RD.) AT SMITH AVE. MENDOTA HEIGHTS, DAKOTA COUNTY					STATE PROJ.NO. 1917-45 (T.H.149) SHEET NO. 1 OF 3 SHEETS			

DISTRICT #: Metro
 PLOT NAME: Notes
 PATH & FILENAME: Projects\DM_POS\49\0000\Traffic\Signals\000_2\459 Smith & Dodd Rd 1735682-2017104\T121459A_sgl.dgn PLOTTED/REVISED: 31-AUG-2022

(4) X:555631.5750, Y:261914.4834
 PEDESTAL FOUNDATION
 13' PEDESTAL POLE PLUS BASE
 2-STRAIGHT MOUNT SIGNALS W/45 DEG VISORS (6 EA)
 2-STRAIGHT MOUNT C. D. PED HEADS
 2" CONDUIT TO HH 8:
 1-12/C #14
 2-4/C #14
 2-1/C #6 INS. GR.

PED PB STATION (PB4-2)
 1-APS PB AND SIGN (RT ARROW)
 EXTEND INTO HH 8:
 1" CONDUIT
 1-2/C#14
 1-1/C#6 INS. GR.

PED PB STATION (PB2-1)
 1-APS PB AND SIGN (LT ARROW)
 EXTEND INTO HH 8:
 1" CONDUIT
 1-2/C#14
 1-1/C#6 INS. GR.

(1) X:555639.8027, Y:262039.6831
 PEDESTAL FOUNDATION
 13' PEDESTAL POLE PLUS BASE
 2-STRAIGHT MOUNT SIGNALS
 2-STRAIGHT MOUNT C. D. PED HEADS
 2" CONDUIT TO HH 2:
 1-12/C #14
 2-4/C #14
 2-1/C #6 INS. GR.

PED PB STATION (PB4-1)
 1-APS PB AND SIGN (LT ARROW)
 EXTEND INTO HH 2:
 1" CONDUIT
 1-2/C#14
 1-1/C#6 INS. GR.

PED PB STATION (PB6-2)
 1-APS PB AND SIGN (RT ARROW)
 EXTEND INTO HH 2:
 1" CONDUIT
 1-2/C#14
 1-1/C#6 INS. GR.

(A) EQUIPMENT PAD
 CONTROLLER, CELLULAR MODEM
 AND CABINET
 SERVICE EQUIPMENT (PAD MOUNTED)

CONTROLLER CABINET TO HH 1:
 4" CONDUIT
 2-12/C#14
 3-4/C#14
 8-2/C#14
 1-1/C#6 INS. GR.

CONTROLLER CABINET TO HH 1:
 4" CONDUIT
 4-12/C#14
 3-4/C#14
 4-3/C#14
 4-3/C#20
 8-2/C#14
 1-1/C#6 INS. GR.

STUB OUTS (THREAD AND CAP BOTH ENDS)
 1-3" CONDUIT
 2-2" CONDUIT
 1-1 1/2" CONDUIT (FUTURE USE)

CONTROLLER CABINET TO SERVICE CABINET
 2" CONDUIT
 2-1/C#6
 1-1/C#6 INS. GR.

CONTROLLER CABINET TO SERVICE CABINET (COMMS):
 2" CONDUIT
 1-6PR#19

SERVICE CABINET TO HH 1:
 2" CONDUIT
 1-3/C#14 (LUM)

(3) X:555703.6583 Y:262015.2503
 PA100 POLE FOUNDATION
 TYPE PA100-A-40-D40-9 (DAVIT AT 350 DEG)
 2-3/4" TREADED HALF COUPLINGS (FOR EVP MOUNTING) AT 2' AND 16'
 1-ANGLE MOUNT SIGNAL OVERHEAD AT 0'
 3-STRAIGHT MOUNT SIGNALS OVERHEAD AT 4' AND 11' AND 22'
 3-ANGLE MOUNT SIGNALS AT 90 DEG, 180 DEG, AND 270 DEG W/45 DEG VISORS (9 EA)
 2-ANGLE MOUNT C. D. PED HEADS AT 90 DEG AND 270 DEG
 4-ONE WAY EVP DETECTOR AND CONFIRMATION LIGHT (PHASES 2,4,6,8)
 LUMINAIRE-LED (FOR 40' MOUNTING HEIGHT)
 4" CONDUIT TO HH 6:
 3-12/C#14
 1-4/C#14
 1-3/C#14 (LUM)
 4-3/C#14
 4-3/C#20
 1-1/C#6 INS. GR.

PED PB STATION (PB2-2)
 1-APS PB AND SIGN (RT ARROW)
 EXTEND INTO HH 6:
 1" CONDUIT
 1-2/C#14
 1-1/C#6 INS. GR.

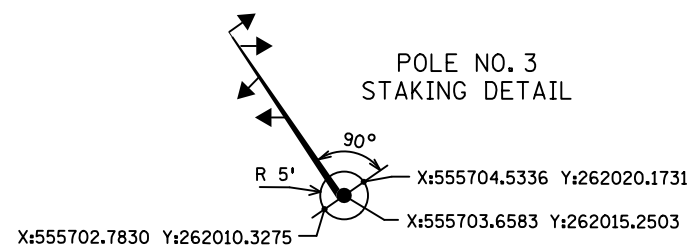
PED PB STATION (PB8-1)
 1-APS PB AND SIGN (LT ARROW)
 EXTEND INTO HH 6:
 1" CONDUIT
 1-2/C#14
 1-1/C#6 INS. GR.

(2) X:555688.9748, Y:262101.2755
 PEDESTAL FOUNDATION
 13' PEDESTAL POLE PLUS BASE
 1-STRAIGHT MOUNT SIGNAL W/45 DEG VISORS (3 EA)
 2-STRAIGHT MOUNT C. D. PED HEADS
 2" CONDUIT TO HH 4:
 1-12/C #14
 1-4/C #14
 1-1/C #6 INS. GR.

PED PB STATION (PB6-1)
 1-APS PB AND SIGN (LT ARROW)
 EXTEND INTO HH 4:
 1" CONDUIT
 1-2/C#14
 1-1/C#6 INS. GR.

PED PB STATION (PB8-2)
 1-APS PB AND SIGN (RT ARROW)
 EXTEND INTO HH 4:
 1" CONDUIT
 1-2/C#14
 1-1/C#6 INS. GR.

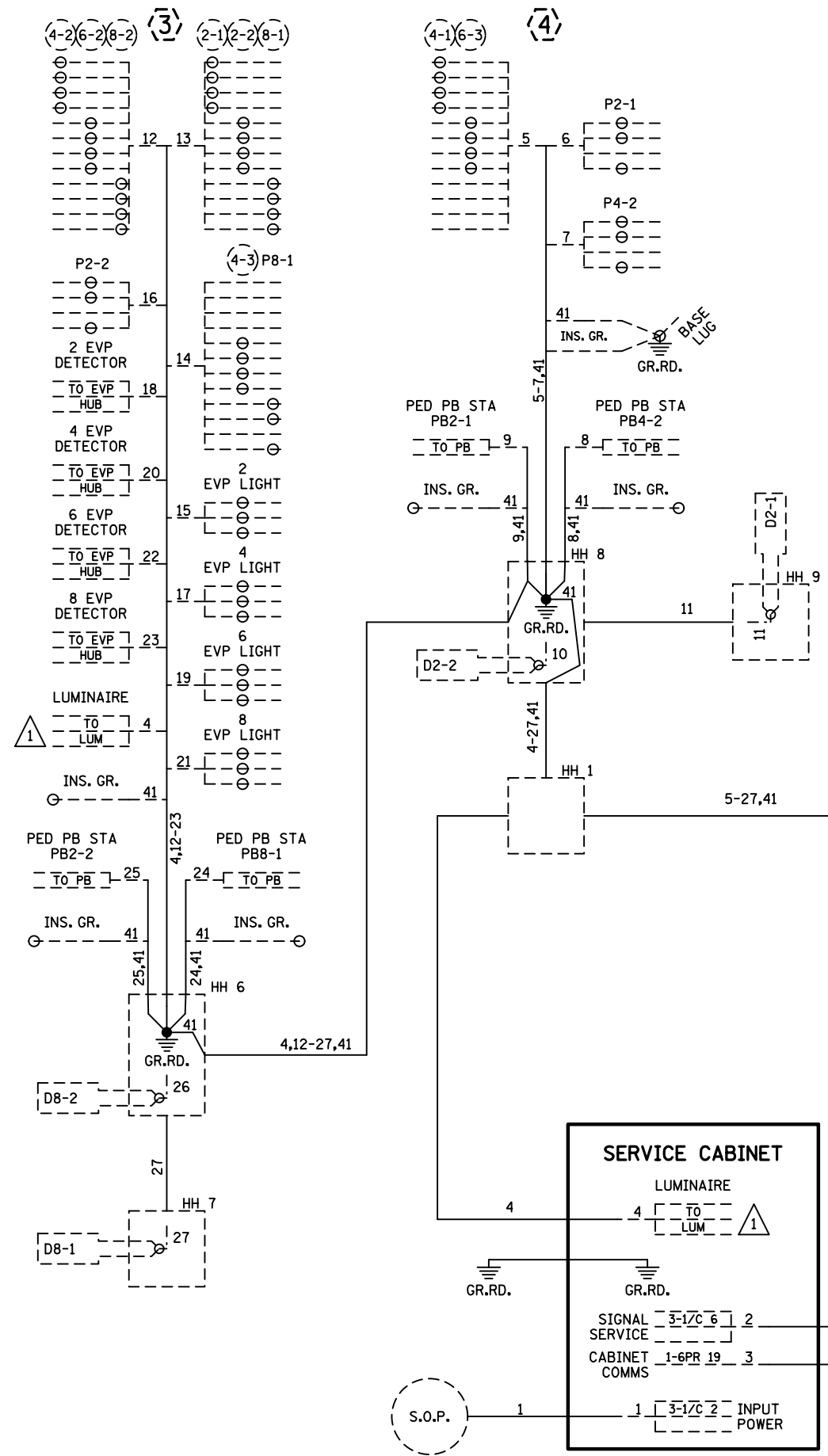
(B) INPLACE: SOP-45 FOOT WOOD POLE
 2" CONDUIT, RISER AND WEATHERHEAD
 3-1/C#2



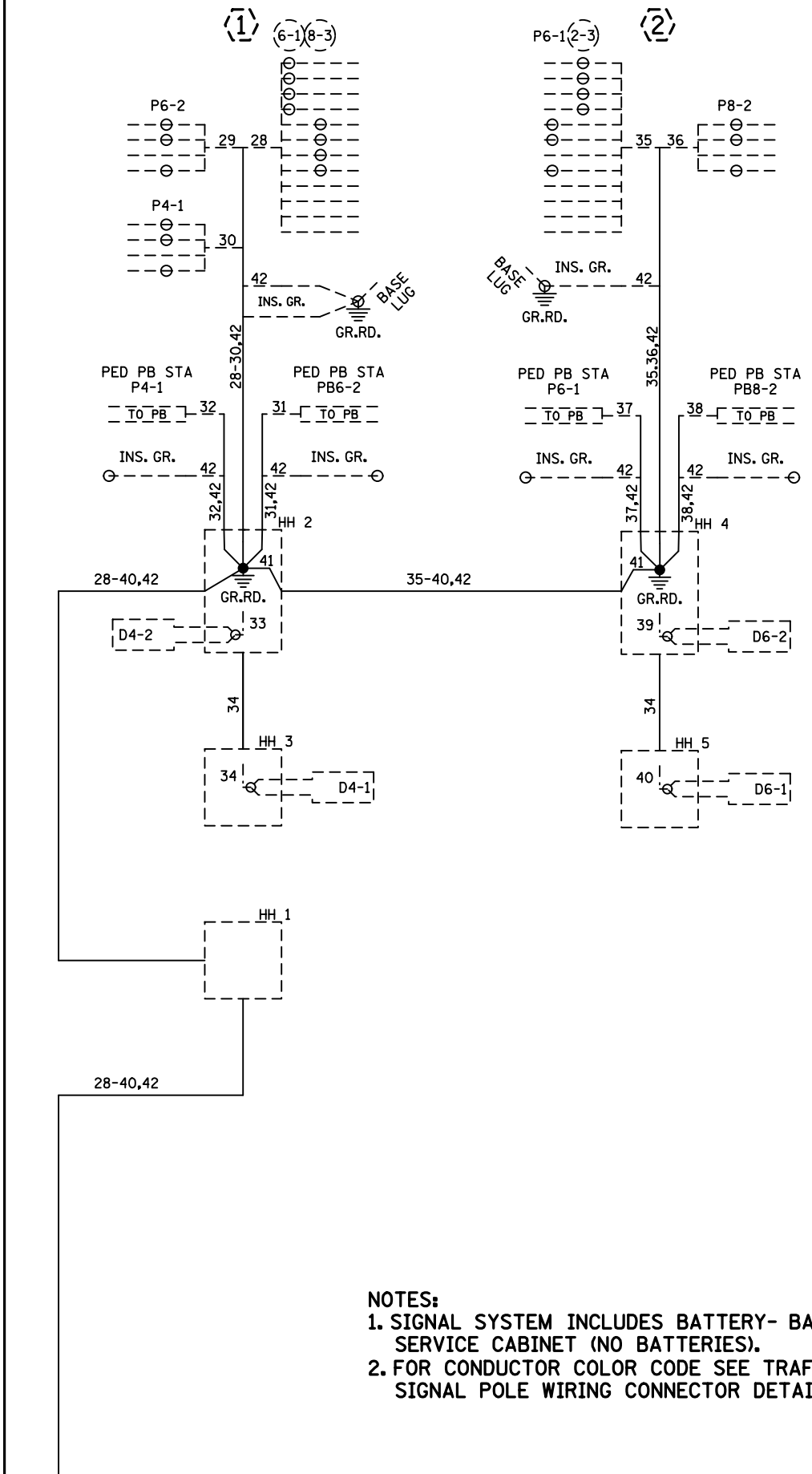
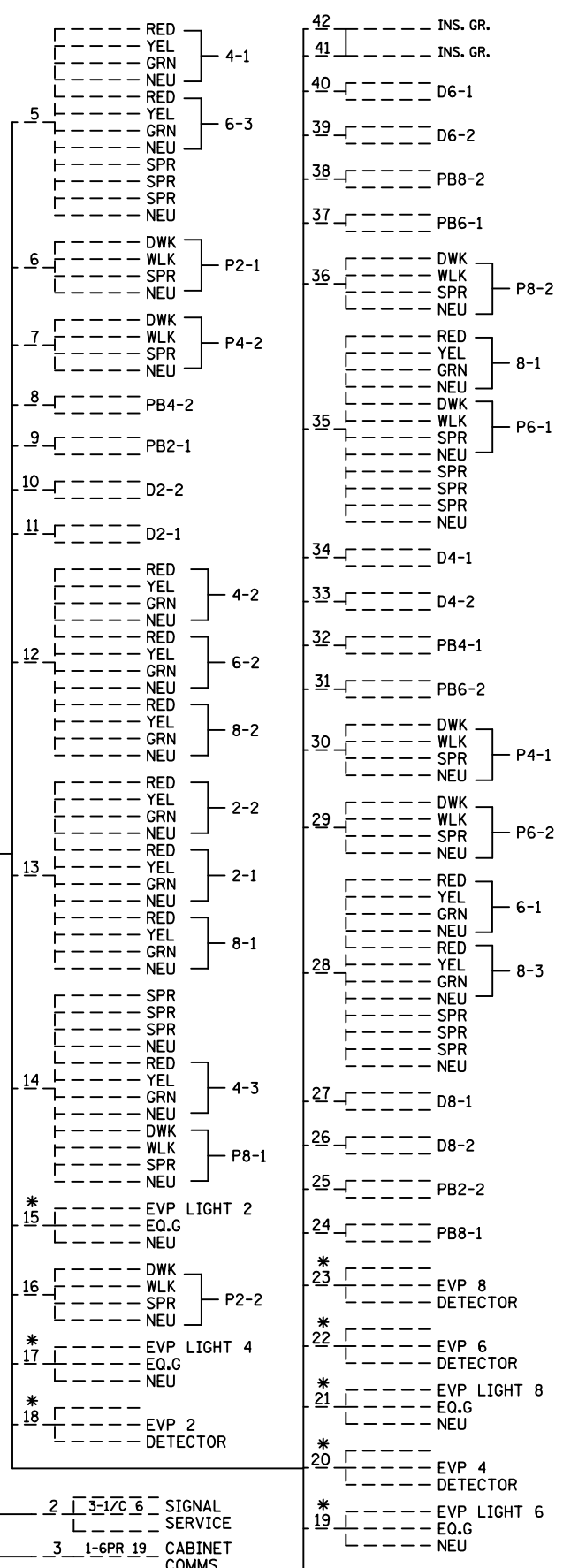
BY	DATE	REVISIONS	SYSTEM ID: 2017104	T.E. 2932	S.A.P. NO.	DRAWN BY:	CKD BY:	DATE:
J3T	JUN 28 19	SP 1917-45 RED-LINES	METER ADDRESS: 997 DODD ROAD		CERTIFIED BY _____			LIC. NO. _____ DATE: _____
			OLD ID: 21459	T.E.	STATE PROJ.NO. 1917-45 (T.H.149) SHEET NO.2 OF 3 SHEETS			

INTERSECTION NOTES
 T.H. 149 (DODD RD.) AT SMITH AVE.
 MENDOTA HEIGHTS, DAKOTA COUNTY

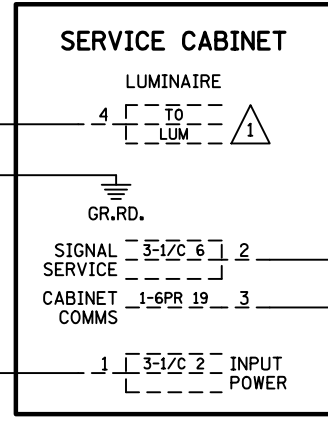
DISTRICT #: Metro
 IPLOT NAME: Wiring
 PATH & FILENAME: Projects\DM_ROS\149\0000\Traffic\Signals\000_21459_Smith & Dodd Rd 1735682-2017104\T121459A_sgl.dgn PLOTTED/REVISED: 31-AUG-2022



CONTROLLER CABINET



NOTES:
 1. SIGNAL SYSTEM INCLUDES BATTERY- BACKUP SERVICE CABINET (NO BATTERIES).
 2. FOR CONDUCTOR COLOR CODE SEE TRAFFIC SIGNAL POLE WIRING CONNECTOR DETAIL.



BY	DATE	REVISIONS	SYSTEM ID: 2017104	T.E. 2932	S.A.P. NO.	DRAWN BY:	CKD BY:	DATE:
J3T	JUN 28 19	SP 1917-45 RED-LINES	METER ADDRESS: 997 DODD ROAD		CERTIFIED BY _____			
			OLD ID: 21459	T.E.	LICENSED PROFESSIONAL ENGINEER	LIC. NO. _____		DATE: _____
FIELD WIRING DIAGRAM T.H. 149 (DODD RD.) AT SMITH AVE. MENDOTA HEIGHTS, DAKOTA COUNTY					STATE PROJ.NO. 1917-45 (T.H.149) SHEET NO. 3 OF 3 SHEETS			