

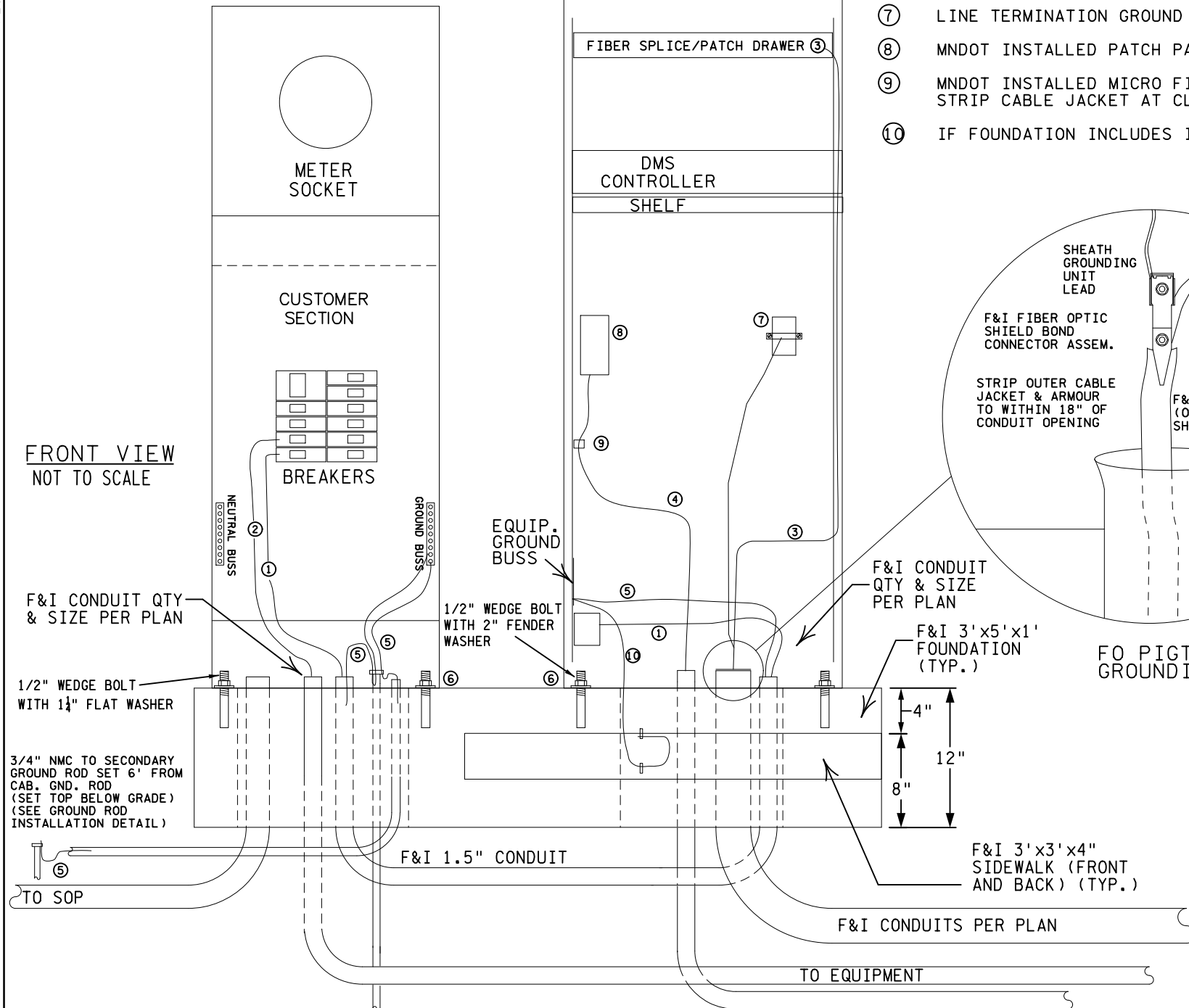
reut1an1 T79CLW161FRW047 TMS
 4/16/2024 8:23:30 AM
 pw: \\p81.ad.dot.state.mn.us: cadp\Documents\Projects\DM_R05\Non_Project\Frw0ps\Detail\Drawings\CAB_LOOP_MISC\cab_loop_misc_dtl.dwg PLOTTED:

F&I SERVICE CABINET AS CALLED IN PLANS

INSTALL 334MP DMS CONTROL CABINET (MNDOT PROVIDED)

- ① F&I POWER CABLE FROM SOURCE OF POWER- TERMINATE AT TERMINAL BLOCK
- ② F&I POWER CABLE TO DMS - TERMINATE AT EACH END
- ③ F&I 1-FO PIGTAIL - PLACE SLACK LOOP OF PIGTAIL CABLE WITHIN CABINET AGAINST SIDEWALL. CONNECT ARMOUR TO SHEATH GROUNDING UNIT - TERMINATE END & LAND IN PATCH PANEL
- ④ F&I MICRO FO PIGTAIL CABLE (6MM) TO DMS - (TERMINATE EACH END AT PATCH PANELS) (PROVIDE 15' SLACK IN CABINET & 25' SLACK IN SIGN)
- ⑤ F&I 1-1/C NO.6 BARE GROUND WIRE - COAT CONNECTION WITH ANTI-OXIDIZING AGENT
- ⑥ INSTALL NEOPRENE GASKET (MNDOT PROVIDED WITH CABINET)
- ⑦ LINE TERMINATION GROUND UNIT (LTU)
- ⑧ MNDOT INSTALLED PATCH PANEL
- ⑨ MNDOT INSTALLED MICRO FIBER GROUND CLIP - F&I MICRO PIGTAIL, STRIP CABLE JACKET AT CLIP & INSTALL THRU GROUND CLIP
- ⑩ IF FOUNDATION INCLUDES INTERNAL GROUND WIRE, ATTACH TO SERVICE CABINET GROUND BUS

FRONT VIEW
NOT TO SCALE



F&I CONDUIT QTY & SIZE PER PLAN

1/2" WEDGE BOLT WITH 1 1/4" FLAT WASHER

3/4" NMC TO SECONDARY GROUND ROD SET 6' FROM CAB. GND. ROD (SET TOP BELOW GRADE) (SEE GROUND ROD INSTALLATION DETAIL)

TO SOP

F&I 1.5" CONDUIT

F&I 3'x3'x4" SIDEWALK (FRONT AND BACK) (TYP.)

F&I CONDUITS PER PLAN

TO EQUIPMENT

F&I GROUND ROD ON BREAKER SIDE OF SERV. CAB.
NOTE: PLACE GROUND ROD WITHIN 334 CAB IF SERVICE IS NOT PRESENT ON PAD.
(SEE GROUND ROD INSTALLATION DETAIL)

TYPICAL 334 SERIES DMS CABINET INSTALLATION

REVISED 04/15/24

REV. NO.	DATE:	/ /
REV. NO.	DATE:	/ /

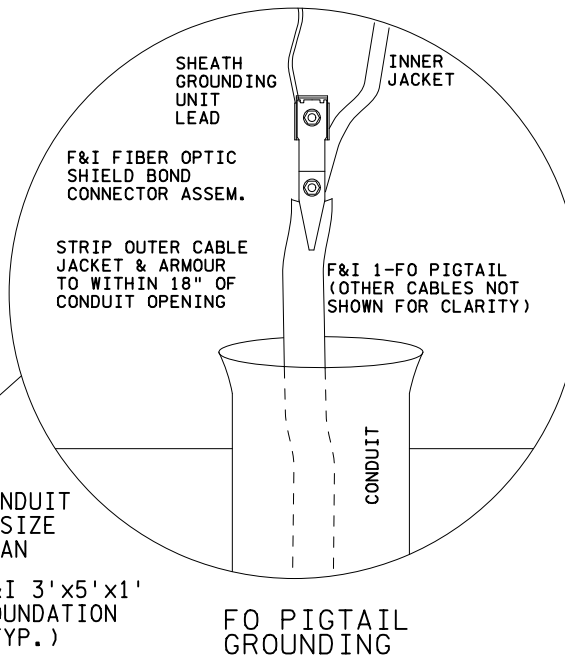
CERTIFIED BY _____

LICENSED PROFESSIONAL ENGINEER

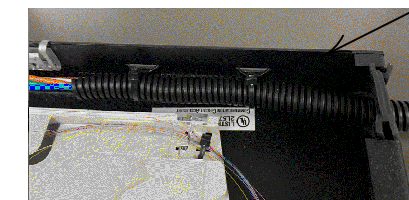
LIC. NO. 12345

DATE 2021

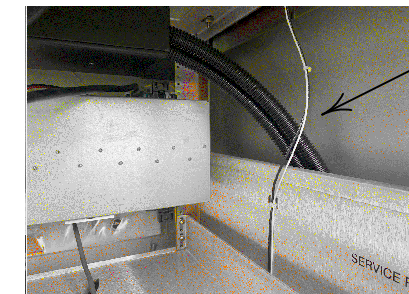
STATE PROJ. NO. XXXX-XXX (TH XXX) SHEET NO. XXXX? OF XXXXX SHEETS



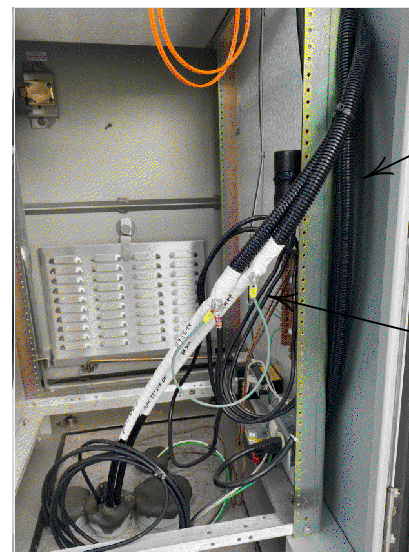
FO PIGTAIL GROUNDING



ROUTE THE INNER JACKET OR 3/8" LOOM TUBING INTO THE PATCH PANEL AND FASTEN.



ROUTE THE INNER JACKET OR 3/8" LOOM TUBING IN THE OPENING PROVIDED IN THE RACK ASSEMBLY.



F&I FIBER OPTIC SHIELD BOND CONNECTOR ASSEM. FOR BOTH SINGLE AND DOUBLE JACKETED CABLES TO WHERE THE OUTER JACKET AND ARMOR ARE REMOVED.

F&I 3/8" SPLIT LOOM TUBING OVER BUFFER TUBES AND CENTRAL STRENGTH MEMBER WHEN USING SINGLE JACKET SINGLE ARMOR CABLE. LOOM TUBING TO BE INSTALLED FROM BREAKOUT INTO FIBER PATCH PANEL. STORE SLACK BETWEEN RACK AND CABINET SHELL

TYPICAL DMS 334 CABINET INSTALLATION