

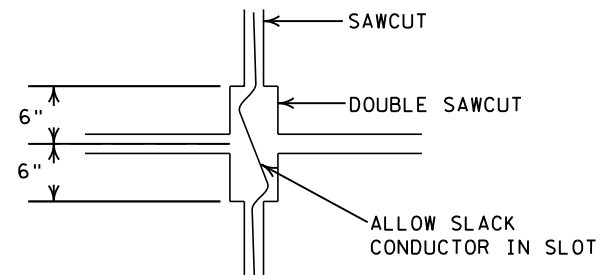
Reut1An1 T79CLW161FRW047 TMS
 6/6/2022 10:41:11 AM
 pw:\p81.ad.dot.state.mn.us:codp\Documents\Projects\DM_R05\Non_Proj\Drawings\CAB_LOOP_MISC\cab_loop_misc.dtl.dwg
 LOTTED:

- SAWCUT DETECTORS IN RAMPS & LOOPS ARE VARIABLE SIZED, AND INSTALLED IN THE CENTER OF THE LANE.
- THE LOOP DETECTOR CONDUCTOR IS 1/C NO.14 COPPER, XLPE OR XHHW INSULATED WIRE. THE WIRE IS CONTAINED IN A FLEXIBLE POLYETHYLENE TUBING.
- USE A SEALANT MADE SPECIFICALLY TO SEAL LOOP DETECTOR SAWCUTS IN CONCRETE ROADWAYS. USE AN APPROVED SEALANT IN BITUMINOUS ROADWAYS AND CONCRETE ROADWAYS THAT ARE TO BE OVERLAYED WITH BITUMINOUS.

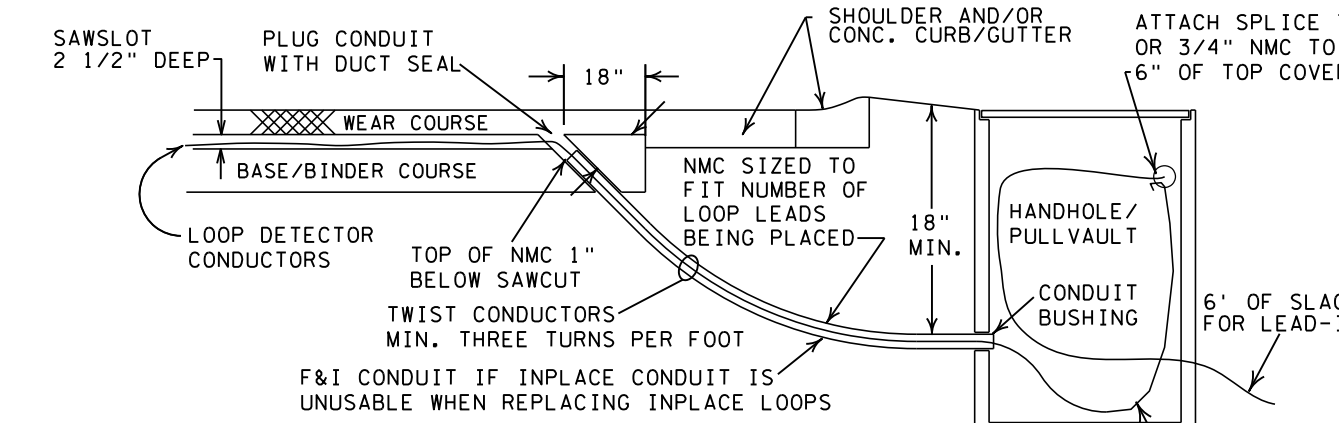
METHOD

- CLEAN ALL DEBRIS FROM THE ENTIRE LOOP DETECTOR AREA.
- MARK THE LOOP SAWCUTS ON THE ROADWAY.
- NOTE: LOCATE LOOPS IN PAVEMENT TO MINIMIZE THE CROSSING OF JOINTS AND CRACKS WITHIN THE PAVEMENT.
- SAW THE CUT TO 2 1/2" +/- 1/4" DEEP BY 1/8" WIDER THAN THE "OD" OF THE CONDUCTOR. SMOOTH THE BOTTOM AND ANGLES TO PREVENT DAMAGE TO INSULATION.
- REAM THE CONDUIT ENDS. PLUG THE CONDUIT IN THE ROADWAY TO PREVENT THE LOOP SEALANT FROM ENTERING THE CONDUIT.
- DRILL THE CORNERS 1/4" DEEPER THAN THE SAW SLOT AND SMOOTH THE HOLE CORNERS.
- CLEAN AND DRY THE ENTIRE LOOP DETECTOR AREA.
- F&I BEAD OF LOOP DETECTOR SEALANT TO WITHIN 6" OF LOOP CONDUCTORS CONDUIT. PLACE CLEAN, DRY LOOP CONDUCTOR STAYING TO THE OUTSIDE OF THE CORNERS. DO NOT PLACE THE CONDUCTOR TIGHT. PUSH THE CONDUCTORS TO THE BOTTOM OF THE SAWSLIT WITH A BLUNT TOOL.
- PLACE 3/4" DIAMETER BY 2" FOAM BACKER ROD AT 2.0' INTERVALS TO HOLD THE CONDUCTOR AT THE BOTTOM OF THE SAWCUT. PLACE LOOP SEALANT.
- F&I CONDUCTOR PER JOINT/CRACK DETAIL EACH TIME A JOINT OR PAVEMENT CRACK IS CROSSED.
- TWIST THE CONDUCTORS 3 TURNS PER FOOT IN THE CONDUIT FROM THE ROADWAY TO THE SPLICE WITHIN THE HANDHOLE.
- FOR LOOP CONDUCTOR SPLICING, SEE LOOP DETECTOR TYPICAL PART TWO DETAIL SHEET
- SAWCUTS SHALL REMAIN 2.0' FROM OTHER SAWCUTS.
- FILL SAW SLOT UNIFORMLY ACCORDING TO THE LOOP SEALANT MANUFACTURERS RECOMMENDED DEPTH. WIPE ALL EXCESS SEALANT MATERIAL FROM THE ROADWAY SURFACE.

NOTE: ALL SAWCUT LOOP DETECTORS SHALL HAVE 4 TURNS

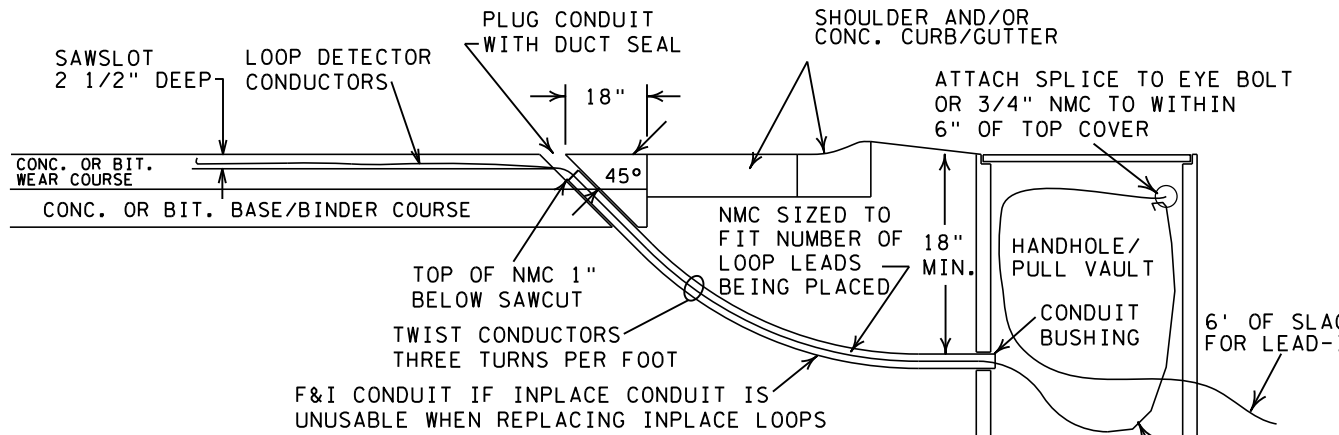


JOINT/CRACK INSTALLATION



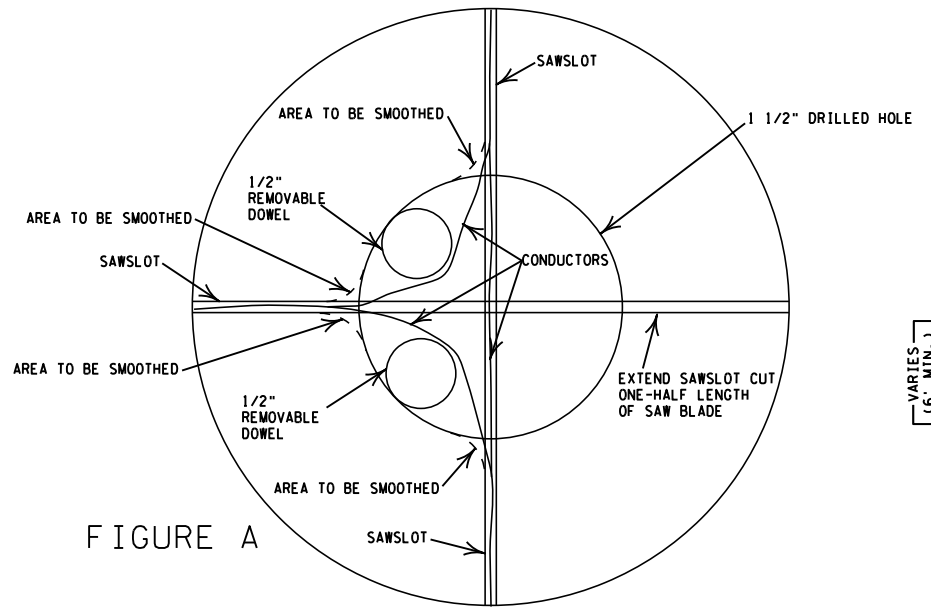
LOOP/HANDHOLE INSTALLATION (MILL & OVERLAY CONSTRUCTION)

* NOTE: SAWCUT LOOP DETECTOR BETWEEN BINDER AND WEAR COURSES



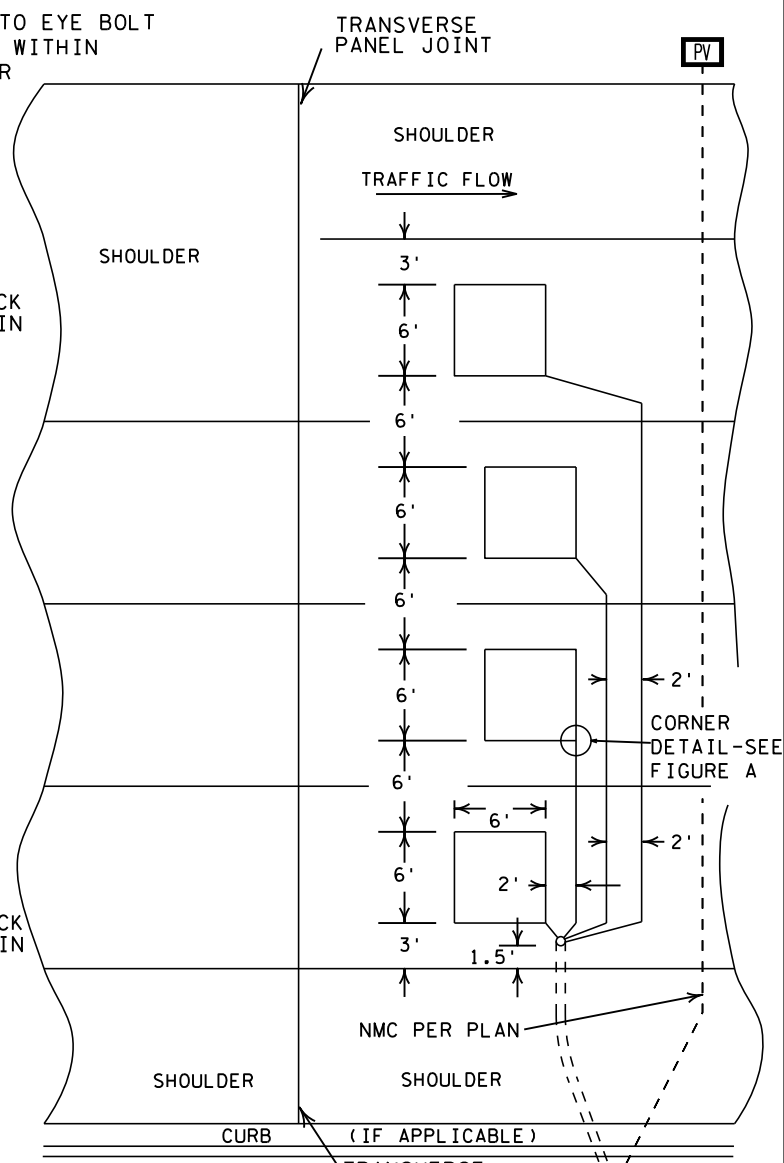
LOOP/HANDHOLE INSTALLATION (INPLACE ROADWAYS)

* NOTE: SAWCUT LOOP DETECTOR INTO WEAR COURSE OR CONC. SURFACE

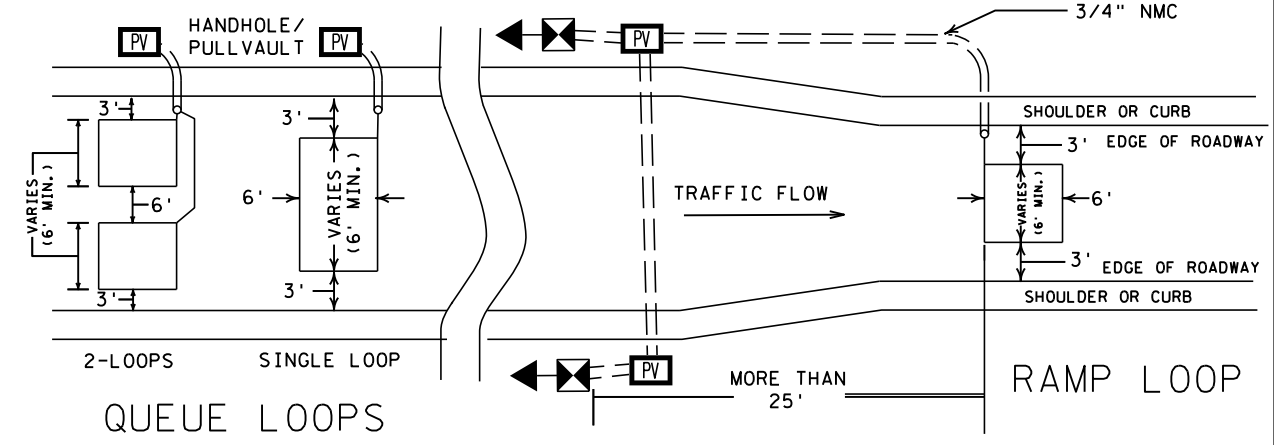


DRILL SAWCUT CORNERS

NOTE: LOOP LEADS SHALL NOT CROSS TRANSVERSE JOINTS IN CONCRETE PAVEMENT. MOVE A LOOP TO THE NEXT PANEL AND F&I A SEPARATE CONDUIT TO THE HH IF ALL LOOPS WILL NOT FIT ONE PANEL AND MAINTAIN SEPARATIONS SHOWN



MAINLINE DETECTORS



QUEUE LOOPS (NOT TO SCALE)

TMS SAWCUT LOOP DETECTOR TYPICAL - PART ONE