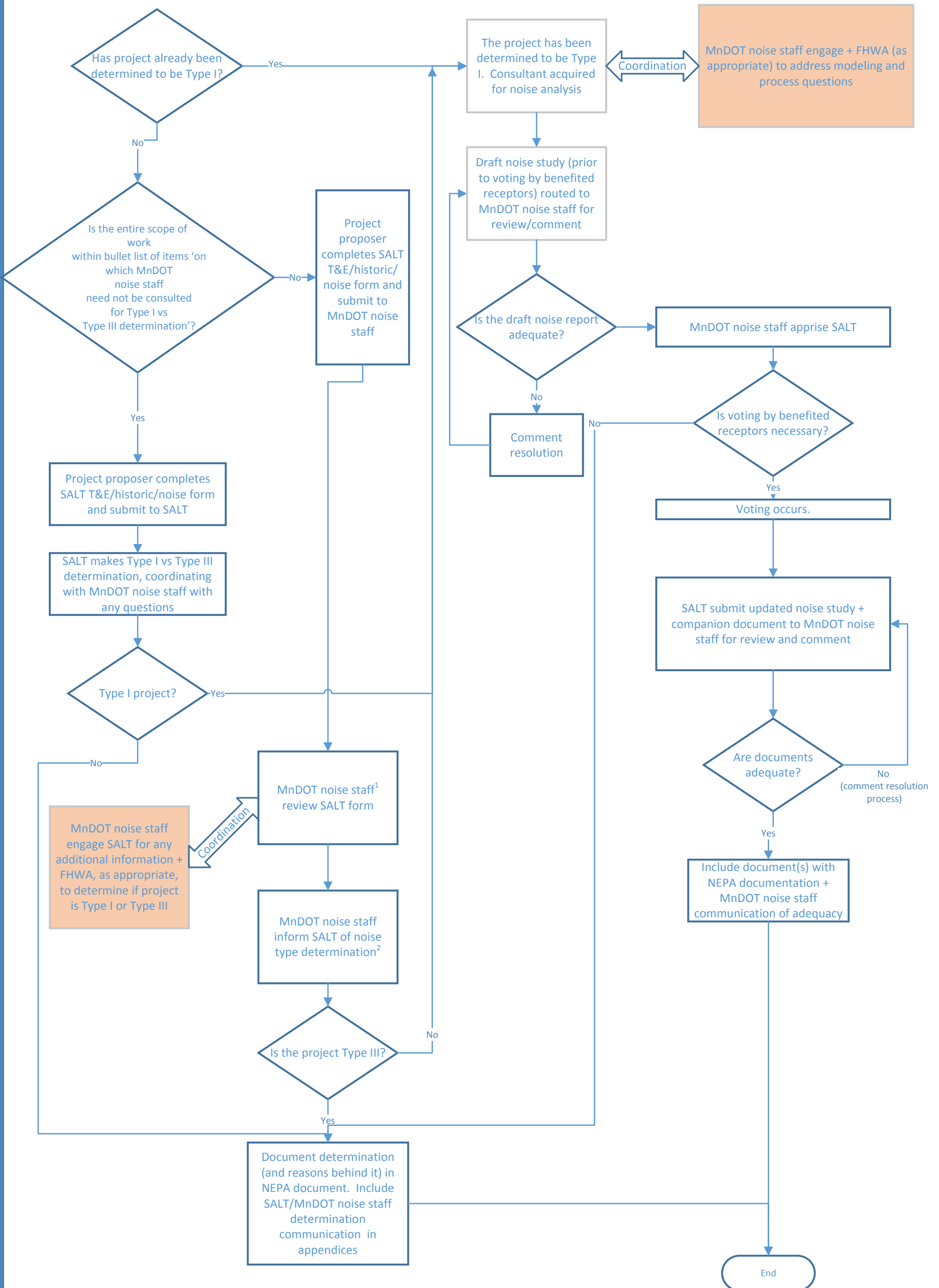


Work Flow Overview



Notes:

- (1) "Noise staff" means either MnDOT Environmental Modeling and Test Unit (EMTU) or the MnDOT Metro Noise/Air Quality Program Supervisor, as appropriate for a specific undertaking.
- (2) This is a determination made with the best available information at the time. It's the SALT's responsibility to apprise MnDOT noise staff of changes to the project during NEPA and final design so the noise staff can determine if those changes make it prudent to change the initial noise type determination.