

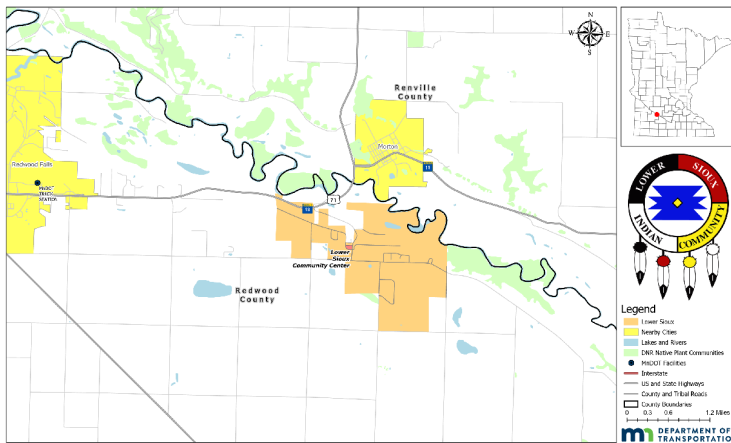


Lower Sioux Indian Community

Cansa'yapi – “Where they mark the trees red” in Dakota

The Lower Sioux Indian Community is located on the south side of the Minnesota River, two miles south of Morton and six miles east of Redwood Falls.

Lower Sioux Indian Community (Cansa'yapi)



Tribal Government Center
PO Box 308
39527 Reservation Hwy 1
Morton, MN 56270
507-697-6185

www.lowersioux.com

Government Structure

- Lower Sioux Constitution
- 5 Elected Community Council officials; President, Vice President, Secretary, Treasurer, Assistant Secretary/Treasurer
- Staggered Elections held odd years in August, two and four year terms

Tribal Council

- **President** – Robert L. Larsen
- **Vice President** – Earl Pendleton
- **Secretary** – Joseph O’Brien
- **Treasurer** – Kevin O’Keefe
- **Assistant Secretary/Treasurer** – Robert Prescott

Key Contacts

- **Roads Director** – Mike Watterson,
507-697-6185 ext. 8644
mike.watterson@lowersioux.com

Lower Sioux Roads Department

- Land use permitting on tribal land
- Lower Sioux Indian Community has tribal trust lands that are non-contiguous

Geographical – Demographic Information

- **Size:** 1,743 acres
- **Citizenship:** 1100 enrolled members
- **Counties:** Redwood
- **Government Headquarters:** Morton

Infrastructure Structure

- US Hwy 71/MN Hwy 19 – >1 mile on reservation
- CH 2 – 1.5 miles on reservation
- CH 13 – 1 miles on reservation
- CH 24 – <1 mile on reservation

Truck Stations on or near Lower Sioux

- Olivia
- Redwood Falls

Community of Lower Sioux

Community	MnDOT District	Infrastructure	Businesses and Areas of Interest
Morton, municipal	8	US Hwy 71/MN- Hwy 19 CH2 CH 13 CH 24 MN Prairie Line Railroad	Tribal Government Center, Jackpot Junction, Lower Sioux Agency historical site

Disclaimer: The State of Minnesota makes no representations or warranties express or implied, there is no guarantee or representation to the user as to the accuracy, currency, suitability, or reliability of this data for any purpose. The user accepts the data "as is." The State of Minnesota assumes no responsibility for loss or damage incurred as a result of any user's reliance on this data. All maps and other material provided herein are protected by copyright. Permission is granted to copy and use the materials herein.