

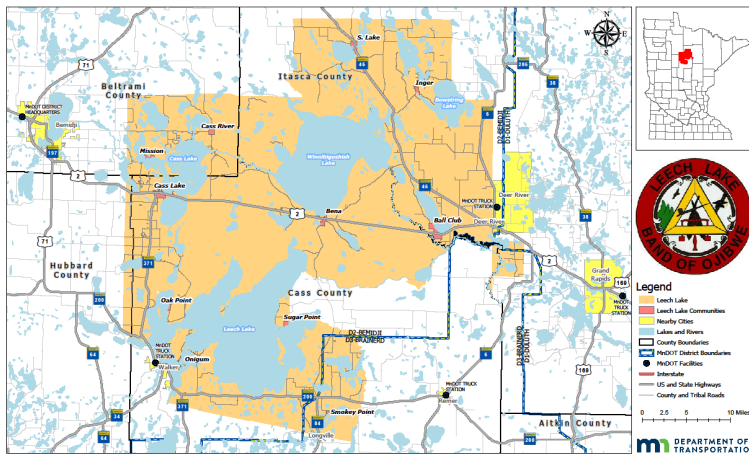


## Leech Lake Band of Ojibwe

### Gaa-zagaskwaajimekaag – “Leech Lake” in Ojibwe

Leech Lake tribal land is roughly the size of Rhode Island and has 408 lakes within the boundaries. The reservation is located in the north-central Minnesota counties of Cass, Itasca, Beltrami, and Hubbard.

Leech Lake Band of Ojibwe (Gaa-zagaskwaajimekaag)



#### Tribal Government Center

190 Sailstar Dr NE NW  
Cass Lake, MN 56633

218-335-8200

[www.llojibwe.org](http://www.llojibwe.org)

### Government Structure

- Minnesota Chippewa Tribe Constitution
- 5 Elected council members; Chairperson, Secretary/Treasurer, 3 District Representatives
- Staggered Elections held even years, 2<sup>nd</sup> Tuesday in June, four year terms

#### Tribal Council

- **Chairman** – Faron Jackson Sr.
- **Secretary/Treasurer** – Leonard Fineday
- **District I Rep** – Kyle Fairbanks
- **District II Rep** – Steve White
- **District III Rep** – LeRoy Staples Fairbanks III

#### Key Contacts

- **Roads Director** – Matt Connor,  
[matt.connor@llojibwe.net](mailto:matt.connor@llojibwe.net)  
218-757-0193
- **Fleet Director** – Ernie Robinson,  
[ernie.robinson@llojiwe.net](mailto:ernie.robinson@llojiwe.net)  
218-368-7837

#### Leech Lake Land Department

- Self-governance realty program
- The Leech Lake land department is responsible for the administration and management of all tribal, band and allotted lands as it relates to surface and subsurface leasing, permitting and rights-of-way, land acquisition and disposal, trust estates planning and implementation of land use ordinances.

<http://www.llojibwe.org/drm/land/land.html>

## Geographical – Demographic Information

- **Size:** 866,645 acres
- **Citizenship\*:** 9,500 enrolled members
- **Counties:** Cass, Beltrami, Hubbard, Itasca
- **Government Headquarters:** Cass Lake

## Infrastructure Structure

- US Hwy 2 – 46 miles on reservation
- MN Hwy 46 – 19 miles on reservation
- MN Hwy 200 – 16 miles on reservation
- MN Hwy 371 – 22 miles on reservation

## Truck Stations on or near Leech Lake

- Bagley
- Bemidji
- Deer River
- Northhome
- Park Rapids
- Walker

## Communities of Leech Lake

Community	MnDOT District	Infrastructure	Businesses and Areas of Interest
Ball Club, non-municipal	2	US Hwy 2 Soo Line Railroad	Ball Club Store
Bena, municipal	2	US Hwy 2 Soo Line Railroad	Winnie Store (a historical building on the National Register)
Cass Lake, municipal	2	US Hwy 2 MN 371	Cedar Lakes Casino, Leech Lake Tribal Government Center
Cass River/Pennington	2		
Deer River	2	US Hwy 2 MN Hwy 46 Soo Line Railroad	White Oak Casino, Schoolcraft State Park, Blueberry Hills Golf Course
Inger	2		
Mission	2		
Oak Point	2		
Onigum	2		
S-Lake, municipal	2	MN Hwy 46	Pow Wow Grounds
Smoky Point	3		
Sugar Point	2		
Walker, non-municipal	2	MN Hwy 200 MN Hwy 371	Northern Lights Casino, Walker Bay Theater, Heartland Trail, Walker Bay Live, Moondance Events

*Disclaimer: The State of Minnesota makes no representations or warranties express or implied, there is no guarantee or representation to the user as to the accuracy, currency, suitability, or reliability of this data for any purpose. The user accepts the data "as is." The State of Minnesota assumes no responsibility for loss or damage incurred because of any user's reliance on this data. All maps and other material provided herein are protected by copyright. Permission is granted to copy and use the materials herein. \*Citizenship estimate is based on information available at the time of publishing. Please contact the tribe for citizenship / enrollment information.*

For more information visit: [mndot.gov/mntribes](http://mndot.gov/mntribes)  
 Or contact: Adrien Carretero, Tribal Affairs Coordinator, 651-236-7674  
[Adrien.Carretero@state.mn.us](mailto:Adrien.Carretero@state.mn.us)  
 Updated: January 2023