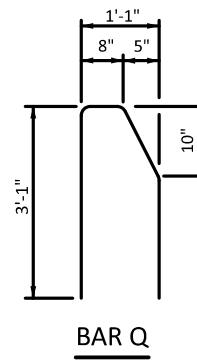
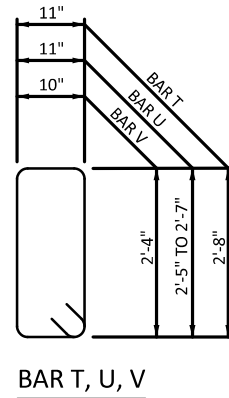
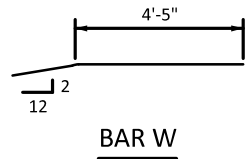
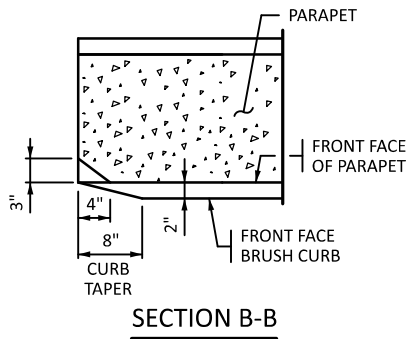
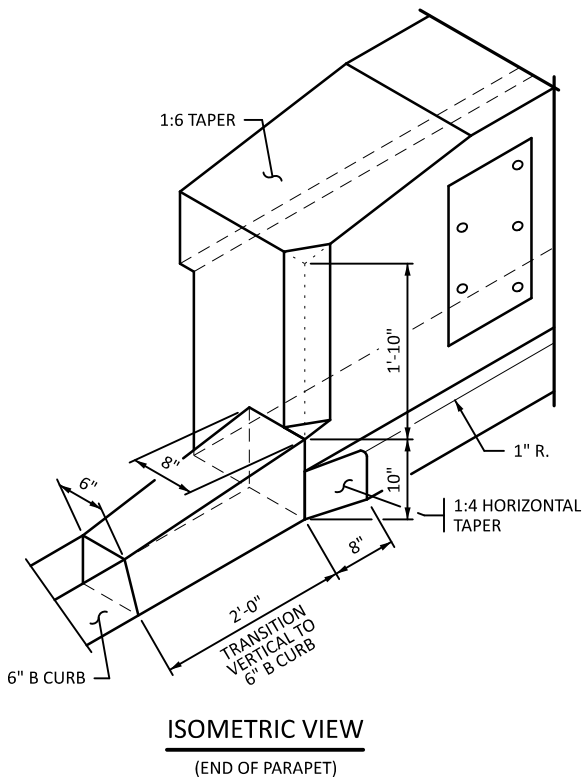


PARAPET MEETS MASH TL-4 REQUIREMENTS



NOTES:

- MATCH PARAPET SAW CUT JOINTS WITH RETAINING WALL STEM CORK AND DOWEL JOINTS.
- MATCH PARAPET CONTROL JOINTS WITH RETAINING WALL STEM CONSTRUCTION JOINTS. PLACE INTERMEDIATE PARAPET CONTROL JOINTS AT 10'-0" MAXIMUM SPACING.
- FOR BARRIERS OR PARAPETS WITH CONDUIT, PLACE CONDUIT EXPANSION FITTINGS AT 200' MAX. SPACING, AT SAW CUT JOINT LOCATION.
- EPOXY COAT BARS MARKED WITH THE SUFFIX "E" IN ACCORDANCE WITH SPEC. 3301.
- FOR SLIPFORM CONSTRUCTION, TIE 100% OF THE REINFORCEMENT BAR INTERSECTIONS IN THE PARAPET.
- FOR TYPICAL RETAINING WALL REINFORCEMENT AND DETAILS, SEE STANDARD RETAINING WALL PLANS.
- PAY FOR CONCRETE PARAPET ON A LINEAL FOOT BASIS.
- IF RETAINING WALL TIES TO BRIDGE WINGWALL, COORDINATE X, Y AND ELEVATION AT TIE IN POINT WITH BRIDGE DESIGNER.
- ① REFER TO STANDARD PLAN 5-297.637 FOR DETAILS.
- ② BAR Q SPACING AND CLEARANCES ARE SHOWN ON THIS SHEET. BAR Q QUANTITIES ARE INCLUDED IN THE WALL PANEL TABULATIONS, EXCEPT FOR TWO ADDITIONAL Q BARS ADDED AT THE GUARDRAIL CONNECTION SHOWN ON STANDARD PLAN 5-297.637.

LEAD EXPERT OFFICE EDWARD LUTGEN OFFICE DIRECTOR BRIDGE OFFICE	RETAINING WALL CONCRETE PARAPET (TYPE P-4)	APPROVED: 07-15-2024 THOMAS STYRBICKI STATE DESIGN ENGINEER	STANDARD PLAN 5-297.634	1 OF 1
			STATE PROJ. NO.	SHEET NO.
	STANDARD PLAN	TRUNK HWY.	TOTAL SHEETS	