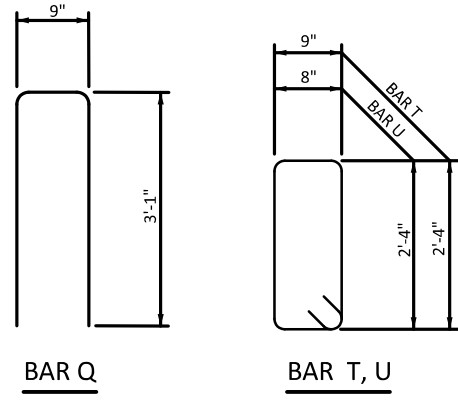
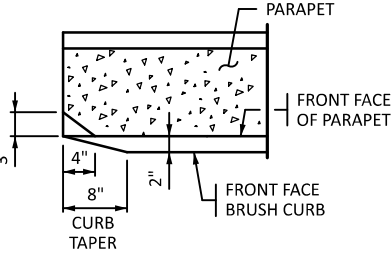
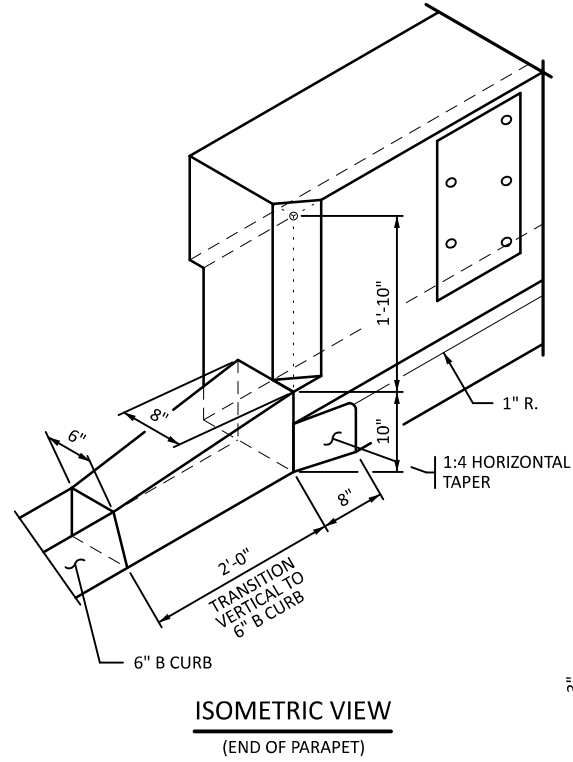


**PARAPET MEETS MASH TL-2 REQUIREMENTS**  
 WHEN THE PARAPET IS ADJACENT TO A WALKWAY, USE A TEST LEVEL 4 BARRIER/PARAPET TO SEPARATE TRAFFIC FROM THIS PARAPET IN A 45 MPH (OR OVER) SPEED ZONE.



- NOTES:**
- MATCH PARAPET SAW CUT JOINTS WITH RETAINING WALL STEM CORK AND DOWEL JOINTS.
  - MATCH PARAPET CONTROL JOINTS WITH RETAINING WALL STEM CONSTRUCTION JOINTS. PLACE INTERMEDIATE PARAPET CONTROL JOINTS AT 10'-0" MAXIMUM SPACING.
  - FOR BARRIERS OR PARAPETS WITH CONDUIT, PLACE CONDUIT EXPANSION FITTINGS AT 200' MAX. SPACING, AT SAW CUT JOINT LOCATION.
  - EPOXY COAT BARS MARKED WITH THE SUFFIX "E" IN ACCORDANCE WITH SPEC. 3301.
  - FOR SLIPFORM CONSTRUCTION, TIE 100% OF THE REINFORCEMENT BAR INTERSECTIONS IN THE PARAPET.
  - FOR TYPICAL RETAINING WALL REINFORCEMENT AND DETAILS, SEE STANDARD RETAINING WALL PLANS.
  - PAY FOR CONCRETE PARAPET ON A LINEAR FOOT BASIS.
  - IF RETAINING WALL TIES TO BRIDGE WINGWALL, COORDINATE X,Y AND ELEVATION AT TIE IN POINT WITH BRIDGE DESIGNER.
  - ① REFER TO STANDARD PLAN 5-297.637 FOR DETAILS.
  - ② BAR Q SPACING AND CLEARANCES ARE SHOWN ON THIS SHEET. BAR Q QUANTITIES ARE INCLUDED IN THE WALL PANEL TABULATIONS, EXCEPT FOR TWO ADDITIONAL Q BARS ADDED AT THE GUARDRAIL CONNECTION SHOWN ON STANDARD PLAN 5-297.637.

<b>LEAD EXPERT OFFICE</b> EDWARD LUTGEN OFFICE DIRECTOR BRIDGE OFFICE	<b>RETAINING WALL CONCRETE PARAPET (TYPE P-1)</b>	APPROVED: 07-15-2024	 THOMAS STYRBICKI STATE DESIGN ENGINEER	<b>STANDARD PLAN 5-297.633</b>	<b>1 OF 1</b>
	<b>STANDARD PLAN</b>	STATE PROJ. NO. TRUNK HWY.	SHEET NO. TOTAL SHEETS		